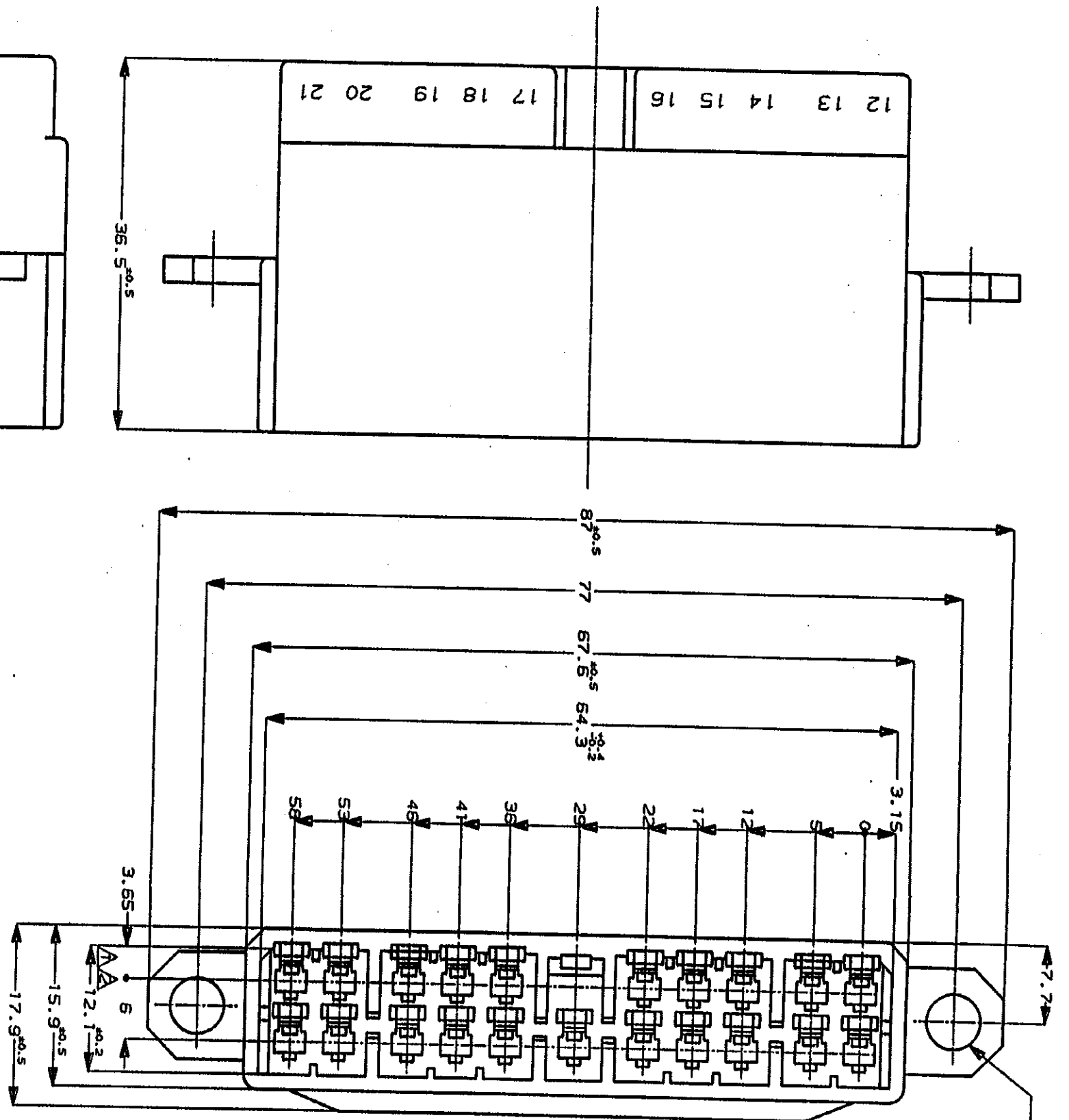


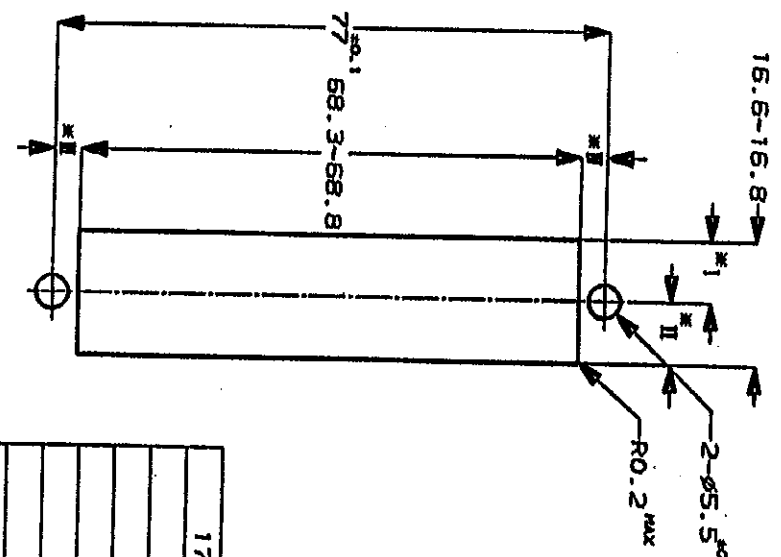
単位: ㎜ DIMENSIONS IN MM. DO NOT SCALE PRINT



NOTES;

- △ TO BE MEASURED WITH IN 2mm FROM □-A
 - △ IN COUPLING WITH THE PLUG HOUSING MATING SATISFIES FUNCTION
 - 3 APPLIED CONTACT P/N 172777, 172779
 - 4 PRODUCT SPEC NO. 108-5166
 - 5 IN COUPLING WITH THE PLUG HOUSING MATING FORCE 29.4N(3KGf)MAX. WITHOUT REC CONTACT
- 注;
- △ □-A 面より 2mm の範囲で測定
 - △ 相手ハウジングと所定の機能を満たして嵌合できること
 - 3 内装するプラグコネクタ型番 172777, 172779 他
 - 4 製品規格 NO. 108-5166
 - 5 相手ハウジングとの嵌合力は 29.4N(3KGf) 以下 但しプラグコネクタは含まない

取付寸法 (1/1)
 * : I と II 及び I と II は 0.1 以内の同寸法のこと。



172517-7	黄 (YELLOW)
-6	灰 (GRAY)
-5	青 (BLUE)
-4	緑 (GREEN)
-3	茶 (BROWN)
-2	黒 (BLACK)
172517-1	自然色 (NATURAL)
番号 (P/N)	色 (COLOR)



東京エレクトロニクス株式会社
 Tokyo, Japan

Copyright © 1982 AMP Corporation, Ltd. ALL RIGHTS RESERVED.	Copyright © 1982 AMP Corporation, Ltd. ALL RIGHTS RESERVED.
Copyright © 1982 AMP Corporation, Ltd. ALL RIGHTS RESERVED.	Copyright © 1982 AMP Corporation, Ltd. ALL RIGHTS RESERVED.

Copyright © 1982 AMP Corporation, Ltd. ALL RIGHTS RESERVED.	Copyright © 1982 AMP Corporation, Ltd. ALL RIGHTS RESERVED.
Copyright © 1982 AMP Corporation, Ltd. ALL RIGHTS RESERVED.	Copyright © 1982 AMP Corporation, Ltd. ALL RIGHTS RESERVED.

Copyright © 1982 AMP Corporation, Ltd. ALL RIGHTS RESERVED.	Copyright © 1982 AMP Corporation, Ltd. ALL RIGHTS RESERVED.
Copyright © 1982 AMP Corporation, Ltd. ALL RIGHTS RESERVED.	Copyright © 1982 AMP Corporation, Ltd. ALL RIGHTS RESERVED.

PRINT DIST
 AMP-1010-2C
 REV. 3/79

X-ON Electronics

Largest Supplier of Electrical and Electronic Components

Click to view similar products for [Automotive Connectors](#) category:

Click to view products by [TE Connectivity](#) manufacturer:

Other Similar products are found below :

[003-018-000](#) [60403001](#) [60993906-B](#) [M902-2131](#) [M902-2161](#) [M902-2344](#) [72.330.1035.1](#) [73.353.4028.0](#) [F119300-B](#) [F166900](#) [F258300-B](#)
[F358300-B](#) [F407400](#) [F444110](#) [F487000](#) [F509500B-B](#) [827153-1](#) [8N1515-32-24P](#) [9-1326729-8](#) [925474-1](#) [928905-1](#) [964562-4](#) [968782-1](#)
[GT17SA-8DS-HU](#) [98891-1012](#) [98947-1016](#) [12004147](#) [12004475-L](#) [12010290](#) [12010309-B](#) [12015454](#) [12020219-B](#) [12041318-B](#) [12052225-](#)
[L](#) [12052466](#) [12064869](#) [12004327-B](#) [12015308](#) [12015384](#) [12015909](#) [1-21030-1](#) [12041254](#) [12041318](#) [12047946-B](#) [12047957](#) [12047957-L](#)
[12059473](#) [12066261](#) [12110546](#) [12110546-B](#)