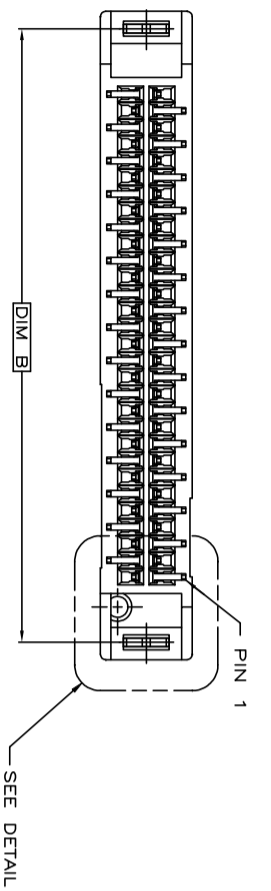
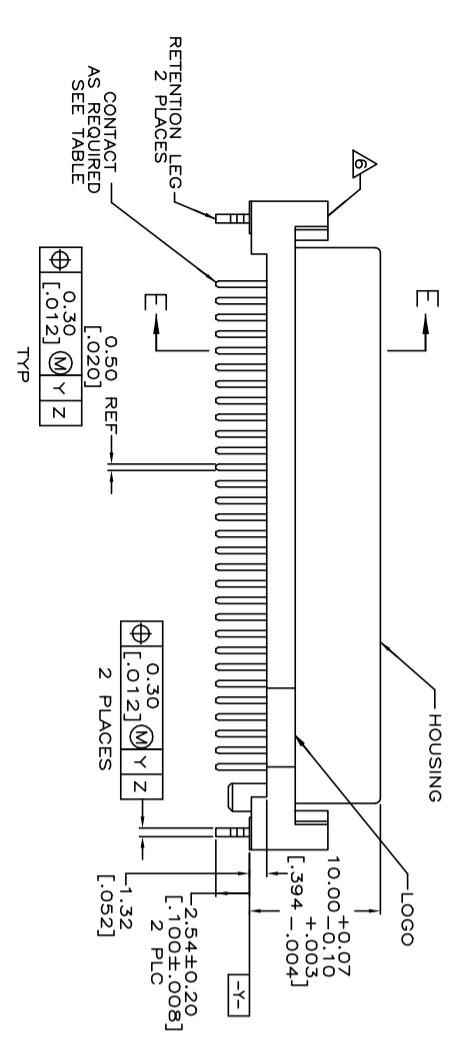
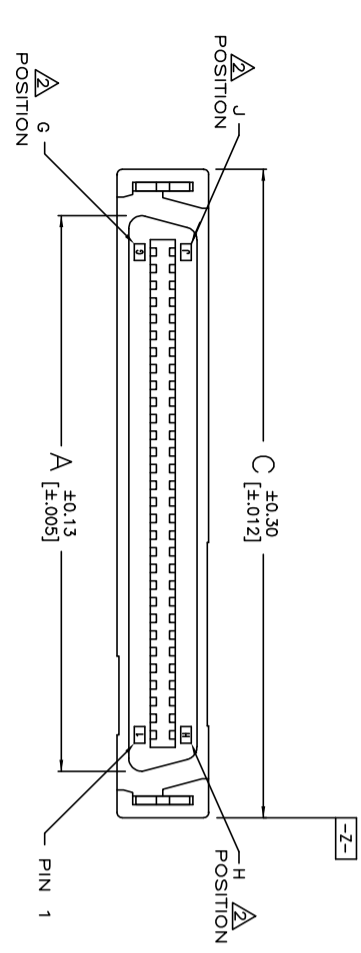
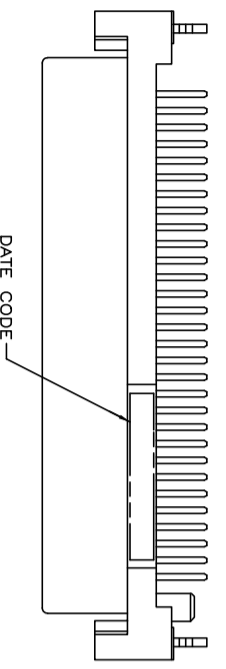


LOC	DIST	REV	DESCRIPTION	DATE	DWN	APVD
DW		E3	REVISED. ECO-19-017538	18NOV2019	S.H	S.H



- MATERIALS:**  
 HOUSING- PPA RESIN, BLACK, MOLDING COMPOUND.  
 CONTACTS- PHOSPHOR BRONZE PLATED WITH MINIMUM THICK (SEE TABLE) GOLD IN CONTACT AREA AND 3.8µm [0.000150] MINIMUM THICK MATTE TIN ON SOLDER TINES OVER 1.27µm THICK MINIMUM THICK NICKEL UNDERPLATE.  
 RETENTION LEG- BRASS PLATED WITH 3.8µm [0.000150] MINIMUM TIN-Cu OVER 1.3µm [0.000051] MINIMUM NICKEL UNDERPLATE.
- G, J, AND H INDICATE NUMBER OF POSITION MARKED ON ASSEMBLY. ALSO SEE TABLE. ALL DIMENSIONS SHOWN ARE MAXIMUM UNLESS OTHERWISE SPECIFIED.**
- 60 POSITION AS SHOWN.
  - RETENTION LEGS NOT PRESENT.
  - TOP OF RETENTION LEG MAY NOT PROTRUDE ABOVE THIS SURFACE.
  - HOUSING BOW UP TO 0.30 [0.012] ALLOWED.
  - CONNECTOR WILL ACCOMMODATE MATING PRINTED CIRCUIT BOARD OF 1.6±0.07 [0.063±0.003] THICKNESS.
  9. ALWAYS ROHS/EVY COMPLIANT.
  10. WAVE SOLDER CAPABLE TO 265°C PER TE SPEC 109-202, CONDITION B.
  - REMOVE CONTACT POSITION FROM #11-#17 AND #36-#42.
  - RECOMMEND CARD EDGE DIM. (PAGE2)
  - GOLD FLASH OVER 0.762µm [30µ"] MIN. PALLADIUM-NICKEL PLATED.
  - OBsolete
  - REMOVE CONTACT POSITION FROM #23-#29 AND #57-#63.

PCB THICKNESS	G	F	A	B	C	D	E	F	G	H	I	J	K	L	M	N	O	P	Q	R	S	T	U	V	W	X	Y	Z	AA	AB	AC	AD	AE	AF	AG	AH	AI	AJ	AK	AL	AM	AN	AO	AP	AQ	AR	AS	AT	AU	AV	AW	AX	AY	AZ	BA	BB	BC	BD	BE	BF	BG	BH	BI	BJ	BK	BL	BM	BN	BO	BP	BQ	BR	BS	BT	BU	BV	BW	BX	BY	BZ	CA	CB	CC	CD	CE	CF	CG	CH	CI	CJ	CK	CL	CM	CN	CO	CP	CQ	CR	CS	CT	CU	CV	CW	CX	CY	CZ	DA	DB	DC	DD	DE	DF	DG	DH	DI	DJ	DK	DL	DM	DN	DO	DP	DP	DR	DS	DT	DU	DV	DW	DX	DY	dz	EA	EB	EC	ED	EE	EF	EG	EH	EI	EJ	EK	EL	EM	EN	EO	EP	EQ	ER	ES	ET	EU	EV	EW	EX	EY	EZ	FA	FB	FC	FD	FE	FF	FG	FH	FI	FJ	FK	FL	FM	FN	FO	FP	FQ	FR	FS	FT	FU	FV	FW	FX	FY	FZ	GA	GB	GC	GD	GE	GF	GG	GH	GI	GJ	GK	GL	GM	GN	GO	GP	GP	GR	GS	GT	GU	GV	GW	GX	GY	GZ	HA	HB	HC	HD	HE	HF	HG	HH	HI	HJ	HK	HL	HM	HN	HO	HP	HP	HR	HS	HT	HU	HV	HW	HX	HY	HZ	IA	IB	IC	ID	IE	IF	IG	IH	II	IJ	IK	IL	IM	IN	IO	IP	IP	IR	IS	IT	IU	IV	IW	IX	IY	IZ	JA	JB	JC	JD	JE	JF	JG	JH	JI	IJ	JK	JK	JL	JM	JN	JO	JP	JP	JR	JS	JT	JU	JV	JW	JX	JY	JZ	KA	KB	KC	KD	KE	KE	KF	KG	KH	KI	KJ	KL	KM	KN	KO	KP	KP	KR	KS	KT	KU	KV	KW	KX	KY	KZ	LA	LB	LC	LD	LE	LE	LF	LG	LH	LI	LJ	LK	LM	LN	LO	LP	LP	LR	LS	LT	LU	LV	LW	LX	LY	LZ	MA	MB	MC	MD	ME	ME	MF	MG	MH	MI	MJ	MK	ML	MM	MN	MO	MP	MP	MR	MS	MT	MU	MV	MW	MX	MY	MZ	NA	NB	NC	ND	NE	NE	NF	NG	NH	NI	NJ	NK	NL	NM	NN	NO	NP	NP	NR	NS	NT	NU	NV	NW	NX	NY	NZ	OA	OB	OC	OD	OE	OE	OF	OG	OH	OI	OJ	OK	OL	OM	ON	OO	OP	OP	OR	OS	OT	OU	OV	OW	OX	OY	OZ	PA	PB	PC	PD	PE	PE	PF	PG	PH	PI	PJ	PK	PL	PM	PN	PO	PP	PP	PR	PS	PT	PU	PV	PW	PX	PY	PZ	QA	QB	QC	QD	QE	QE	QF	QG	QH	QI	QJ	QK	QL	QM	QN	QO	QP	QP	QR	QS	QT	QU	QV	QW	QX	QY	QZ	RA	RB	RC	RD	RE	RE	RF	RG	RH	RI	RJ	RK	RL	RM	RN	RO	RP	RP	RR	RS	RT	RU	RV	RW	RX	RY	RZ	SA	SB	SC	SD	SE	SE	SF	SG	SH	SI	SJ	SK	SL	SM	SN	SO	SP	SP	SR	SS	ST	SU	SV	SW	SX	SY	SZ	TA	TB	TC	TD	TE	TE	TF	TG	TH	TI	TJ	TK	TL	TM	TN	TO	TP	TP	TR	TS	TT	TU	TV	TW	TX	TY	TZ	UA	UB	UC	UD	UE	UE	UF	UG	UH	UI	UJ	UK	UL	UM	UN	UO	UP	UP	UR	US	UT	UU	UV	UW	UX	UY	UZ	VA	VB	VC	VD	VE	VE	VF	VG	VH	VI	VJ	VK	VL	VM	VN	VO	VP	VP	VR	VS	VT	VU	VV	VW	VX	VY	VZ	WA	WB	WC	WD	WE	WE	WF	WG	WH	WI	WJ	WK	WL	WM	WN	WO	WP	WP	WR	WS	WT	WU	WV	WW	WX	WY	WZ	XA	XB	XC	XD	XE	XE	XF	XG	XH	XI	XJ	XK	XL	XM	XN	XO	XP	XP	XR	XS	XT	XU	XV	XW	XX	XY	XZ	YA	YB	YC	YD	YE	YE	YF	YG	YH	YI	YJ	YK	YL	YM	YN	YO	YP	YP	YR	YS	YT	YU	YV	YW	YX	YY	YZ	ZA	ZB	ZC	ZD	ZE	ZE	ZF	ZG	ZH	ZI	ZJ	ZK	ZL	ZM	ZN	ZO	ZP	ZP	ZR	ZS	ZT	ZU	ZV	ZW	ZX	ZY	ZZ
0.8-1.6	[0.031-.063]	2.54	25.83	36.75	34.11	29.67	23.32	15	30	16	0.381um[15u]	5-1734101-4	60																																																																																																																																																																																																																																																																																																																																																																																																																																																																																																																																																																																																																																																																																																																																		
0.8-1.6	[0.031-.063]	2.54	32.18	43.10	40.46	36.02	29.67	20	40	21	0.381um[15u]	6-1734101-4	40																																																																																																																																																																																																																																																																																																																																																																																																																																																																																																																																																																																																																																																																																																																																		
0.8-1.6	[0.031-.063]	2.54	32.18	43.10	40.46	36.02	29.67	25	50	26	0.381um[15u]	6-1734101-5	30																																																																																																																																																																																																																																																																																																																																																																																																																																																																																																																																																																																																																																																																																																																																		
0.8-1.6	[0.031-.063]	2.54	32.18	43.10	40.46	36.02	29.67	25	50	26	0.381um[15u]	6-1734101-6	60																																																																																																																																																																																																																																																																																																																																																																																																																																																																																																																																																																																																																																																																																																																																		
0.8-1.6	[0.031-.063]	2.54	32.18	43.10	40.46	36.02	29.67	25	50	26	0.381um[15u]	6-1734101-7	68																																																																																																																																																																																																																																																																																																																																																																																																																																																																																																																																																																																																																																																																																																																																		
0.8-1.6	[0.031-.063]	2.54	32.18	43.10	40.46	36.02	29.67	25	50	26	0.381um[15u]	6-1734101-8	80																																																																																																																																																																																																																																																																																																																																																																																																																																																																																																																																																																																																																																																																																																																																		
0.8-1.6	[0.031-.063]	2.54	32.18	43.10	40.46	36.02	29.67	25	50	26	0.381um[15u]	6-1734101-9	100																																																																																																																																																																																																																																																																																																																																																																																																																																																																																																																																																																																																																																																																																																																																		
0.8-1.6	[0.031-.063]	2.54	32.18	43.10	40.46	36.02	29.67	25	50	26	0.381um[15u]	6-1734101-0	120																																																																																																																																																																																																																																																																																																																																																																																																																																																																																																																																																																																																																																																																																																																																		
0.8-1.6	[0.031-.063]	2.54	32.18	43.10	40.46	36.02	29.67	25	50	26	0.381um[15u]	6-1734101-1	160																																																																																																																																																																																																																																																																																																																																																																																																																																																																																																																																																																																																																																																																																																																																		
0.8-1.6	[0.031-.063]	2.54	32.18	43.10	40.46	36.02	29.67	25	50	26	0.381um[15u]	6-1734101-2	200																																																																																																																																																																																																																																																																																																																																																																																																																																																																																																																																																																																																																																																																																																																																		
0.8-1.6	[0.031-.063]	2.54	32.18	43.10	40.46	36.02	29.67	25	50	26	0.381um[15u]	6-1734101-3	30																																																																																																																																																																																																																																																																																																																																																																																																																																																																																																																																																																																																																																																																																																																																		

THIS DRAWING IS A CONTROLLED DOCUMENT.

**STE** TE Connectivity

RECEPTACLE ASSEMBLY, VERTICAL, BOARD-TO-BOARD, CHAMP.050, SERIES I,

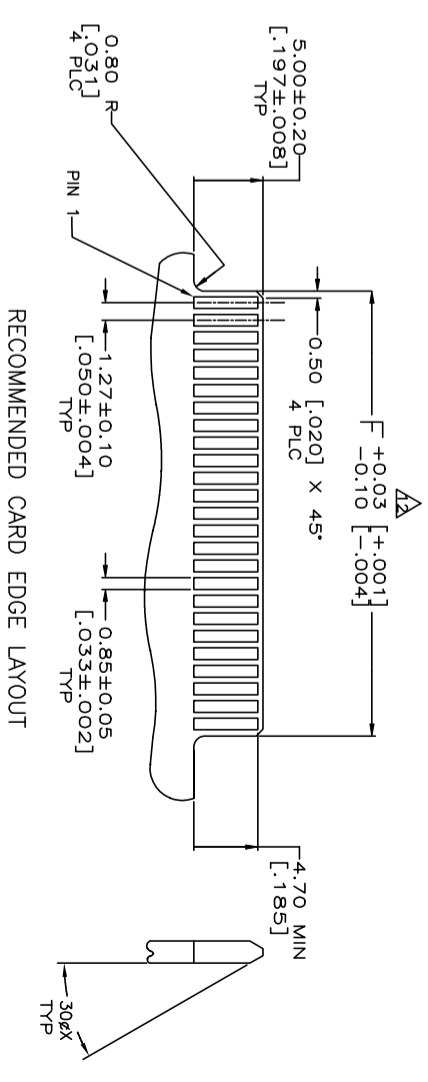
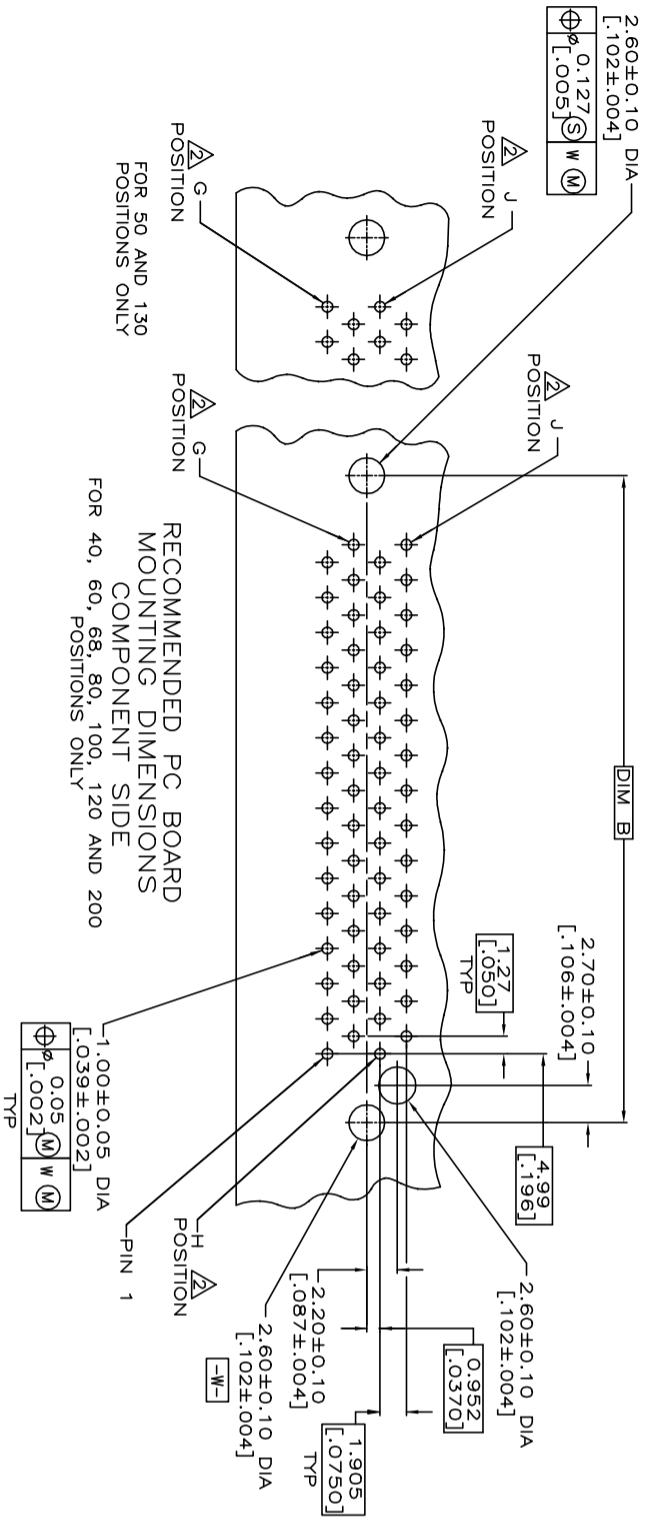
APVD: S. CHIEN 31MAR2009  
 CHK: F. YANG 31MAR2009  
 PRODUCT SPEC: 108-57876  
 QUALIFICATION TEST REPORT: 108-57876  
 WEIGHT: -  
 CUSTOMER DRAWING: A3 00779 G=1734101

SCALE: 1 OF 4 SHEET REV: E3

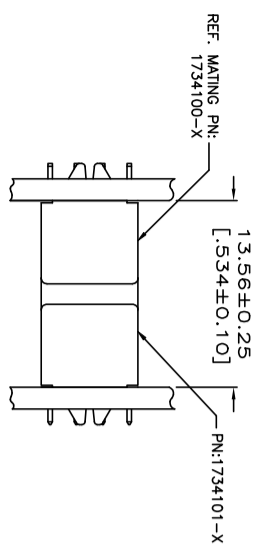
LOC	DIST	P	LTR	DESCRIPTION	DATE	DWN	APVD
DW				SEE SHEET 1.			

REVISIONS

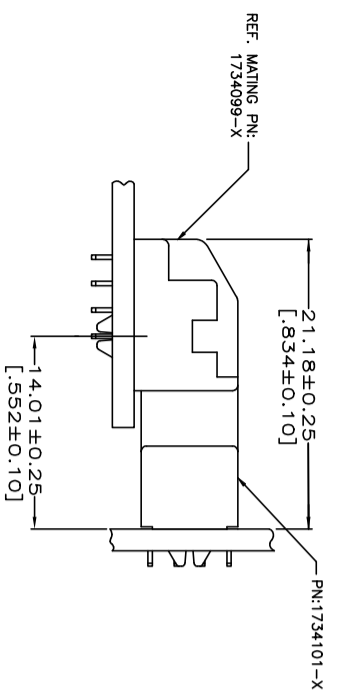
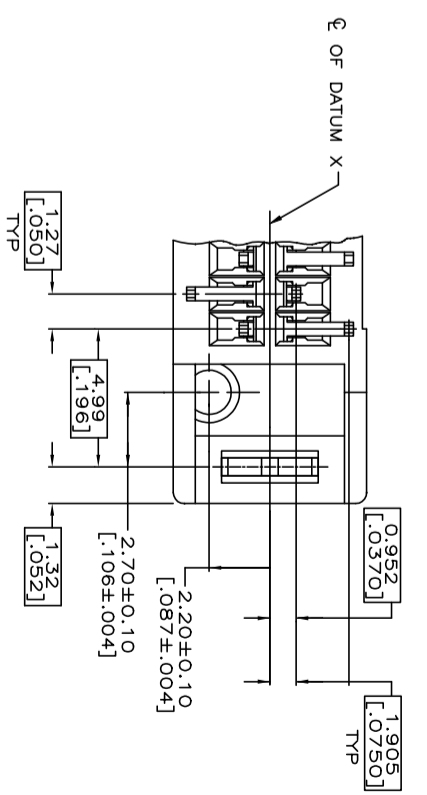
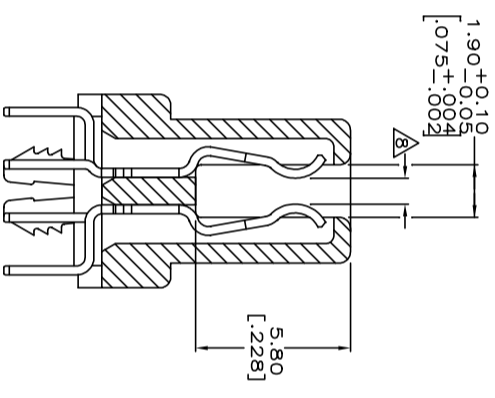
REV	DATE	BY	DESCRIPTION
2			
1			



RECOMMENDED CARD EDGE LAYOUT



VERTICAL RECEPTACLE ASSEMBLY MATED TO VERTICAL PLUG ASSEMBLY



VERTICAL RECEPTACLE ASSEMBLY MATED TO VERTICAL PLUG ASSEMBLY

THIS DRAWING IS A CONTROLLED DOCUMENT.

DIMENSIONS: MM

TOLERANCES UNLESS OTHERWISE SPECIFIED:

0 PLC ±.05

1 PLC ±.05

2 PLC ±.05

3 PLC ±.05

4 PLC ±.05

FINISH ANGLES ±.05

**STE** TE Connectivity

RECEPTACLE ASSEMBLY, VERTICAL, BOARD-TO-BOARD, CHAMP.050, SERIES 1,

DWN	CHK	APVD	PRODUCT SPEC	QUALIFICATION TEST REPORT	WEIGHT	CUSTOMER DRAWING

NAME	SIZE	CAGE CODE	DRAWING NO	RESTRICTED TO
RECEPTACLE ASSEMBLY, VERTICAL, BOARD-TO-BOARD, CHAMP.050, SERIES 1,	A3	00779	1734101	

SCALE	SHEET	REV
2	OF 4	E2

THIS DRAWING IS UNPUBLISHED.

RELEASED FOR PUBLICATION

AUG. 2006.

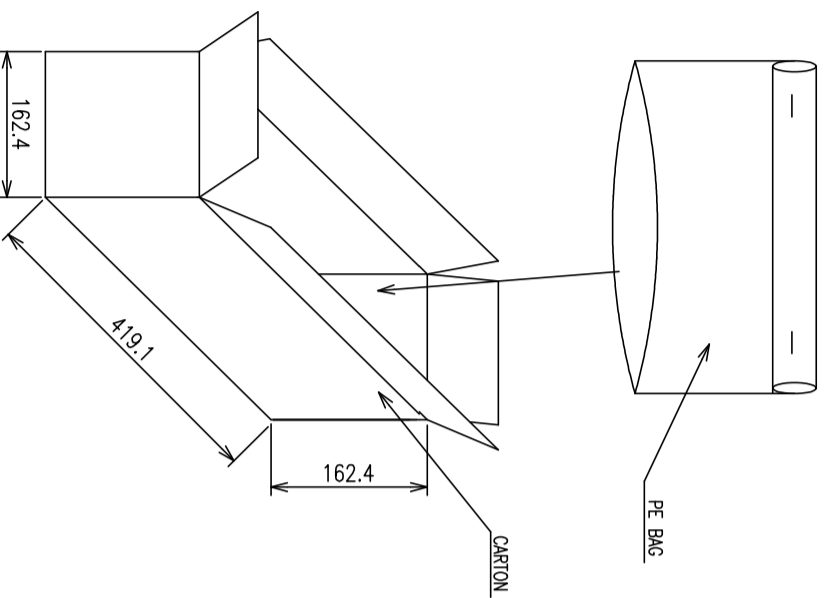
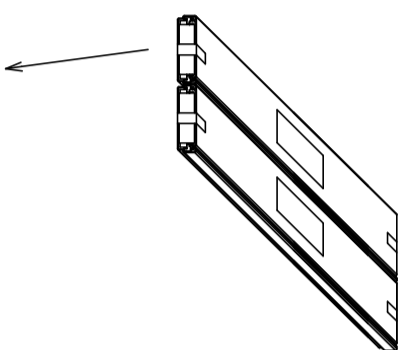
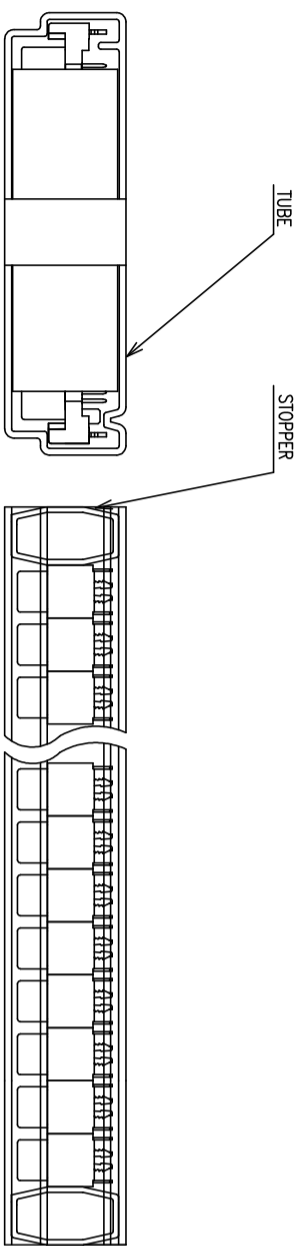
© COPYRIGHT BY TYCO ELECTRONICS CORPORATION.

ALL RIGHTS RESERVED.

Loc DW DIST

REVISIONS

P	LTR	DESCRIPTION	DATE	DMN	APVD
		SEE SHEET 1.			



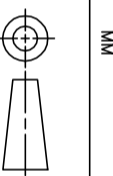
DMN	CHK	APVD	PRODUCT SPEC	QUALIFICATION TEST REPORT	WEIGHT	CUSTOMER DRAWING	NAME	SIZE	CAGE CODE	DRAWING NO	RESTRICTED TO
							STE	A3	00779	1734101	

DMN	G.W./CARTON (KG)	N.W./CARTON (KG)	PCS/TUBE	TUBES/CARTON	QUANTITY/CARTON (PCS)	PART NUMBER	POS.
OBSOLETE	4.21	2.89	54	8	432	5-1734401-3	120
OBSOLETE	6.84	4.92	54	16	864	3-1734401-1	100
OBSOLETE	5.61	4.06	54	16	864	5-1734401-8	80
OBSOLETE	5.05	3.63	54	16	864	1-1734101-8	68
	4.65	3.23	54	16	864	4-1734101-7	
	4.28	3.11	54	16	864	7-1734101-7	
	4.72	3.42	54	16	864	4-1734101-6	60
OBSOLETE	5.32	4.02	54	24	1296	6-1734101-6	
	4.42	3.37	54	24	1296	4-1734101-4	40
	6.25	5.36	54	32	1728	6-1734101-3	30

THIS DRAWING IS A CONTROLLED DOCUMENT.

DIMENSIONS: MM



TOLERANCES UNLESS OTHERWISE SPECIFIED:

FINISH	TOLERANCE
0 PLC	± .1
1 PLC	± .1
2 PLC	± .1
3 PLC	± .1
4 PRC ANGLES	± .1

RECEPTACLE ASSEMBLY, VERTICAL, BOARD-TO-BOARD, CHAMP.050, SERIES 1,

SCALE: 1:1 SHEET 3 OF 4 REV E2

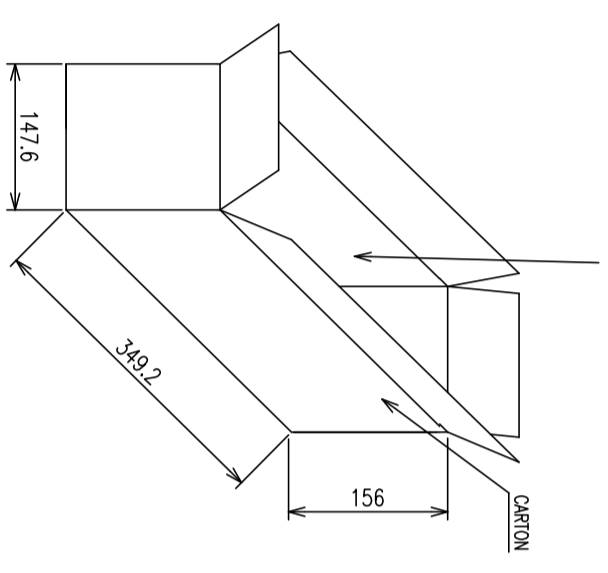
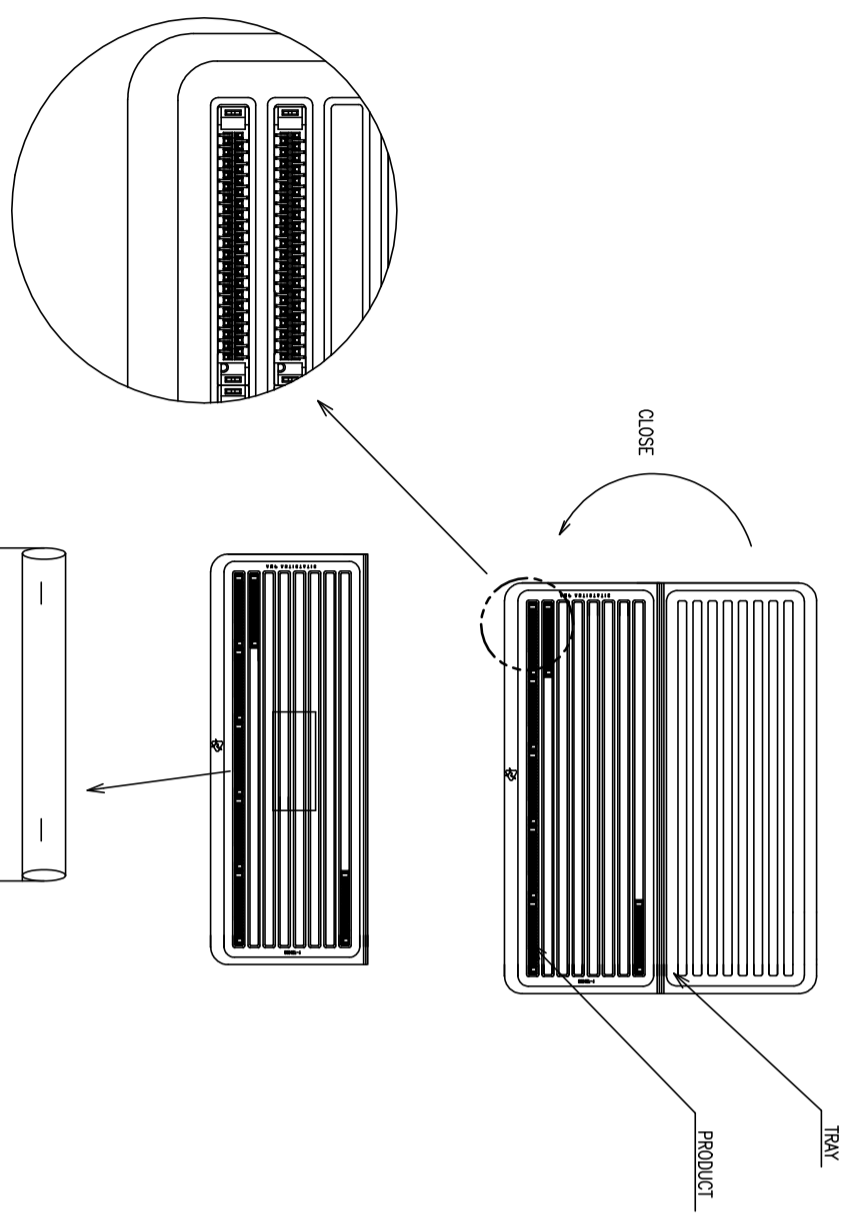
THIS DRAWING IS UNPUBLISHED.  
 © COPYRIGHT - BY TYCO ELECTRONICS CORPORATION. ALL RIGHTS RESERVED.

RELEASED FOR PUBLICATION  
 AUG. 2006.

Loc DW  
 DIST

REVISIONS

P	LTR	DESCRIPTION	DATE	DWN	APVD
		SEE SHEET 1.			

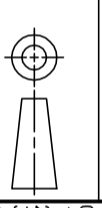


DESCRIPTION	G.W./CARTON (KG)	N.W./CARTON (KG)	PCS/TRAY	TRAYS/CARTON	QUANTITY/CARTON (PCS)	PART NUMBER	POS.
OBSOLETE	2.69	1.71	16	10	160	5-1734101-6 3-1734101-6 1-1734101-6 5-1734101-5 3-1734101-5 1-1734101-5	200
	2.37	1.39	16	10	160	5-1734101-4 3-1734101-4 1-1734101-4	160
OBSOLETE	2.48	1.50	32	10	320	4-1734101-9 6-1734101-9 1734101-9	80

THIS DRAWING IS A CONTROLLED DOCUMENT.

DIMENSIONS: MM

TOLERANCES UNLESS OTHERWISE SPECIFIED:	±
0 PLC	±
1 PLC	±
2 PLC	±
3 PLC	±
4. P.C. ANGLES	±



TE Connectivity

RECEPTACLE ASSEMBLY,  
 VERTICAL, BOARD-TO-BOARD,  
 CHAMP.050, SERIES 1,

APVD	NAME	SIZE	CAGE CODE	DRAWING NO	RESTRICTED TO
		A3	00779	1734101	
PRODUCT SPEC					
QUALIFICATION TEST REPORT					
WEIGHT					
CUSTOMER DRAWING					

## X-ON Electronics

Largest Supplier of Electrical and Electronic Components

*Click to view similar products for [Board to Board & Mezzanine Connectors](#) category:*

*Click to view products by [TE Connectivity](#) manufacturer:*

Other Similar products are found below :

[589158040000018](#) [MDF7C-18P-2.54DSA\(55\)](#) [FCN-230C068-11](#) [FCN-268F012-G/BD](#) [FCN-268F036-G/BD](#) [FCN-268M012-G/0D](#) [FCN-268M024-G/1D](#) [FCN-723J004/1](#) [MIS-048-01-F-D-DP-K](#) [832-10-034-10-001000](#) [FX4C-80S-1.27DSA](#) [FCN-214Q030-G/0](#) [FCN-234P048-G/0](#) [FCN-235D050-G/C](#) [210-93-314-41-105000](#) [2-22603-0](#) [MDF7-40DP-2.54DSA\(55\)](#) [AXG720047](#) [5031084030](#) [MIT-114-03-F-D-K](#) [55323-1519](#) [DF33-2P-3.3DSA\(24\)](#) [YFT-20-05-H-03-SB-K](#) [503308-3040](#) [026-6203-PDB](#) [027-6203-PDB](#) [069159702701000](#) [10123981-102LF](#) [101A10019X](#) [55650-0588-C](#) [68682-310LF](#) [68684-306](#) [75140-7012](#) [87471-650](#) [194261-1](#) [FCN-268F024-G0D](#) [10124054-515LF](#) [68685-603](#) [8-1616154-3](#) [MIS-019-01-F-D](#) [FCN-268M024-G/3D](#) [20021832-06016C1LF](#) [KX15-20KLDL-E1000E](#) [MDF7-16DP-2.54DSA\(55\)](#) [AXE810124](#) [FCN-214J100-G/0](#) [FCN-230C068-E/S](#) [AXE812124](#) [AXE816124](#) [AXE720127](#)