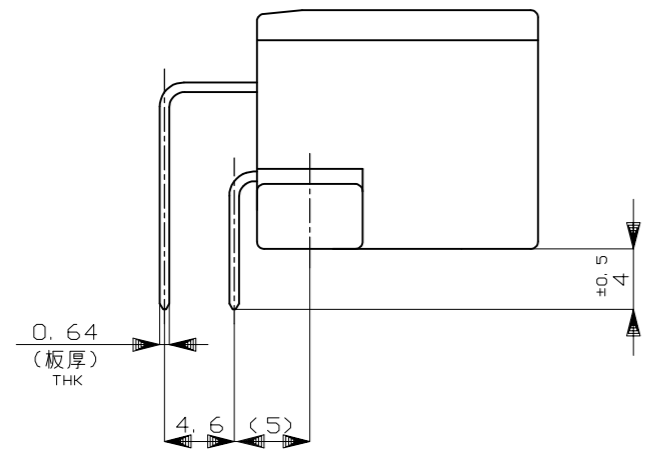
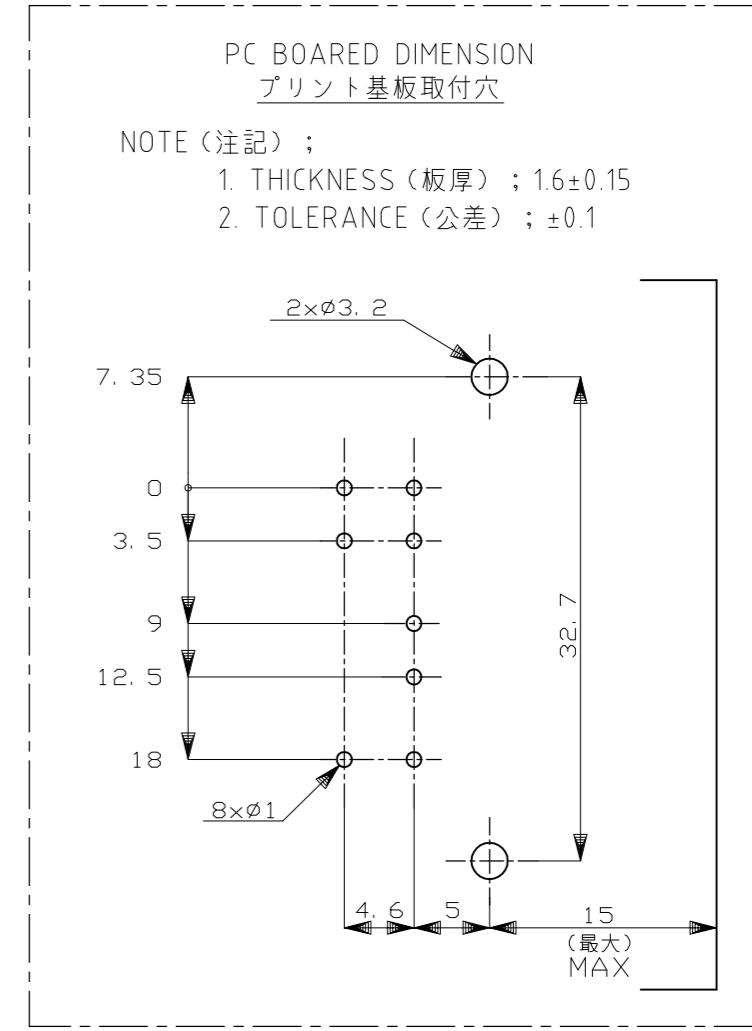
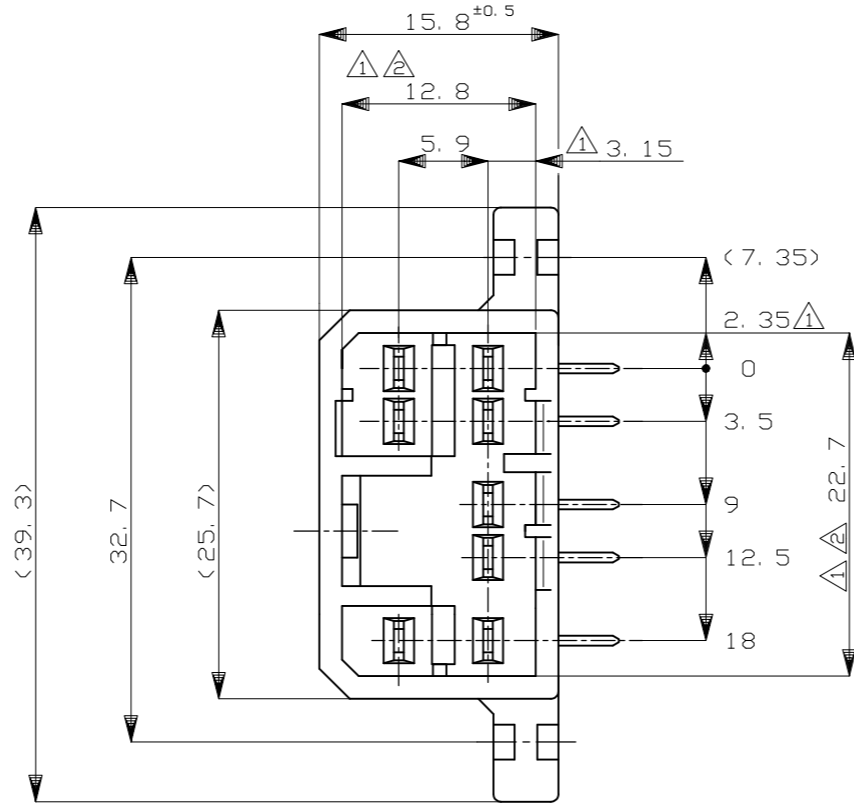
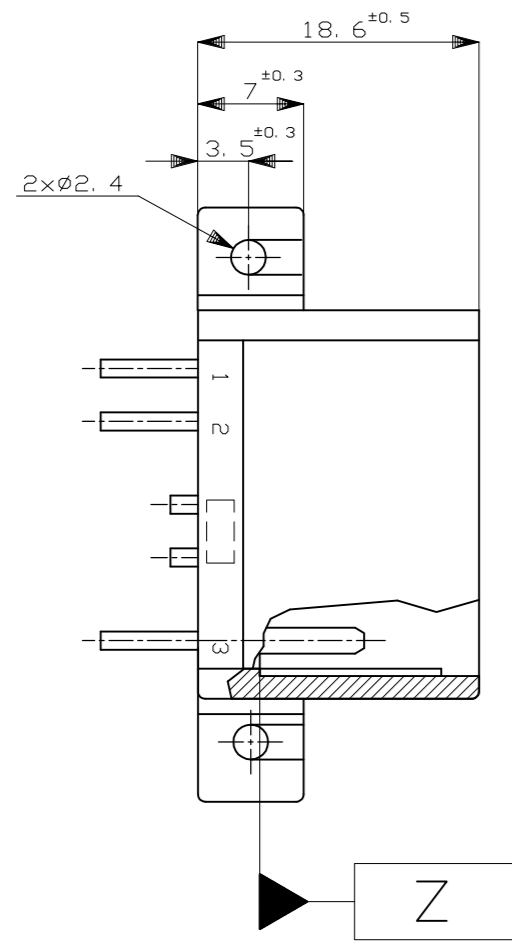
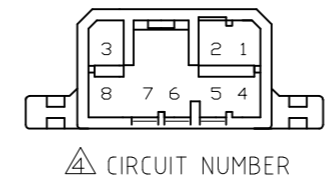


THIS DRAWING IS UNPUBLISHED. RELEASED FOR PUBLICATION
 © COPYRIGHT - By - ALL RIGHTS RESERVED.

| LOC | DIST | REVISED | | | | | |
|-----|------|---------|---------|---------------|---------|-----|------|
| | | P | LTR | DESCRIPTION | DATE | DWN | APVD |
| J | - | J7 | REVISED | ECR-15-006110 | 21APR15 | KF | RK |



- △ Z 面より2mmの範囲で測定。
- △ 相手ハウジングと所定の機能を満足して嵌合できること
- 3. プリント基板への取付は、JIS B1115又は1122、M3×6ナベ (2種又は4種) のタッピンネジで締付けた後ハンダ付する (締付けトルク: 0.4N-m 以下)
- △ 回路番号; 右図参照のこと。



- △ TO BE MEASURED BETWEEN Z AND 2
- △ TO BE MATE WITH PLUG HSG SMOOTHLY
- 3. TO BE USE M3 TAPPING SCREW JIS B1115 OR 1122 (TYPE 2 OR 4) BEFORE SOLDER (TIGHTENING TORQUE: 0.4N-m MAX.)
- △ CIRCUIT NUMBER

| | | | | | | | |
|----------------|------------------------|--------------------|------------------------------------|----------------|--------------------------------|-------------|------------------|
| HB | SELECTIVE-TIN (MATTE) | SELECTIVE GOLD × 8 | 1~8 (全極) | - | NATURAL 自然色 | 1-5173856-1 | |
| HB | PRE-TIN × 2 | | - | 4, 8 (2極) | NATURAL 自然色 | 5-173856-1 | |
| V-0 | PRE-TIN × 8 | | - | 1~8 (全極) | NATURAL 自然色 | 4-173856-1 | |
| HB | PRE-TIN × 6 | | - | 1~4, 6, 8 (6極) | GRAY 灰色 | 2-173856-6 | |
| SEE 3-173856-1 | | | | | | 3-173856-1 | |
| OBSOLETE | V-2 | PRE-TIN × 8 | - | 1~8 (全極) | NATURAL 自然色 | 9-173856-1 | |
| HB | PRE-TIN × 5 | | - | 4~8 (5極) | NATURAL 自然色 | 2-173856-1 | |
| | PRE-TIN × 8 | | - | 1~8 (全極) | GRAY 灰色 | 173856-6 | |
| | TIN-LEAD | SELECTIVE GOLD × 8 | 1~8 (全極) | - | NATURAL 自然色 | 1-173856-1 | |
| | PRE-TIN × 8 | | - | 1~8 (全極) | BLUE 青色 | 173856-5 | |
| | PRE-TIN × 8 | | - | 1~8 (全極) | GREEN 緑色 | 173856-4 | |
| PRE-TIN × 8 | | - | 1~8 (全極) | NATURAL 自然色 | 173856-1 | | |
| USED MATERIAL | SOLDERING SIDE 半田付け面 | CONTACT SIDE 接触部側 | △ GOLD PLATED CIRCUIT NO. 金めっき回路番号 | | △ PRE-TIN CIRCUIT NO. 錫めっき回路番号 | COLOR 色 | PART NUMBER 製品型番 |
| FLAMMABILITY | CONTACT FINISH コンタクト仕上 | | | | | | |

THIS DRAWING IS A CONTROLLED DOCUMENT.

DWN T.SHINOHARA 19SEP03
 CHK K.BETSUI 19SEP03
 APVD K.BETSUI 19SEP03

TE Connectivity

070 SERIES MULTI-LOCK CONNECTOR
 8POSITION CAP HOUSING ASSEMBLY

PRODUCT SPEC 108-5216
 APPLICATION SPEC 取付適用規格

SIZE A2 CAGE CODE 00779 DRAWING NO. 173856 RESTRICTED TO -

WEIGHT 5.55g SCALE 2:1 SHEET 1 OF 1 REV J7

CUSTOMER DRAWING

TOLERANCE UNLESS OTHERWISE SPECIFIED: 一般公差

| | |
|--------------|-------|
| 0 < x ≤ 10 | ±0.2 |
| 10 < x ≤ 30 | ±0.25 |
| 30 < x ≤ 100 | ±0.3 |
| ANGLE | ±3° |

FINISH 仕上 SEE TABLE

X-ON Electronics

Largest Supplier of Electrical and Electronic Components

Click to view similar products for [Automotive Connectors](#) category:

Click to view products by [TE Connectivity](#) manufacturer:

Other Similar products are found below :

[003-018-000](#) [60403001](#) [60993906-B](#) [M902-2131](#) [M902-2161](#) [M902-2344](#) [72.330.1035.1](#) [73.353.4028.0](#) [F119300-B](#) [F166900](#) [F258300-B](#)
[F358300-B](#) [F407400](#) [F444110](#) [F487000](#) [F509500B-B](#) [827153-1](#) [8N1515-32-24P](#) [9-1326729-8](#) [925474-1](#) [928905-1](#) [964562-4](#) [968782-1](#)
[GT17SA-8DS-HU](#) [98891-1012](#) [98947-1016](#) [12004147](#) [12004475-L](#) [12010290](#) [12015454](#) [12020219-B](#) [12041318-B](#) [12052225-L](#) [12052466](#)
[12064869](#) [12004327-B](#) [12015308](#) [12015384](#) [12015909](#) [1-21030-1](#) [12041254](#) [12041318](#) [12047946-B](#) [12047957](#) [12047957-L](#) [12059473](#)
[12066261](#) [12110546](#) [12110546-B](#) [12131792](#)