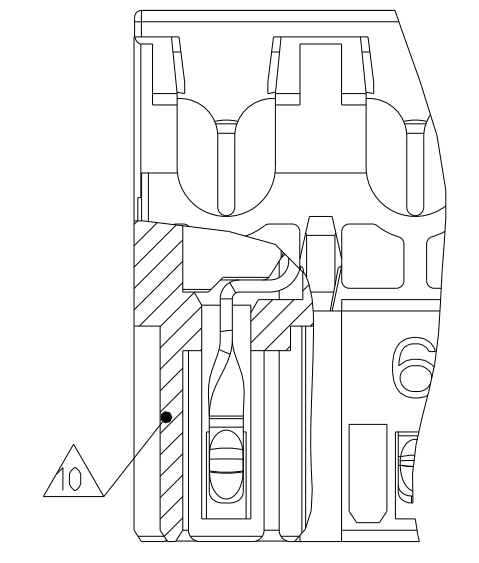
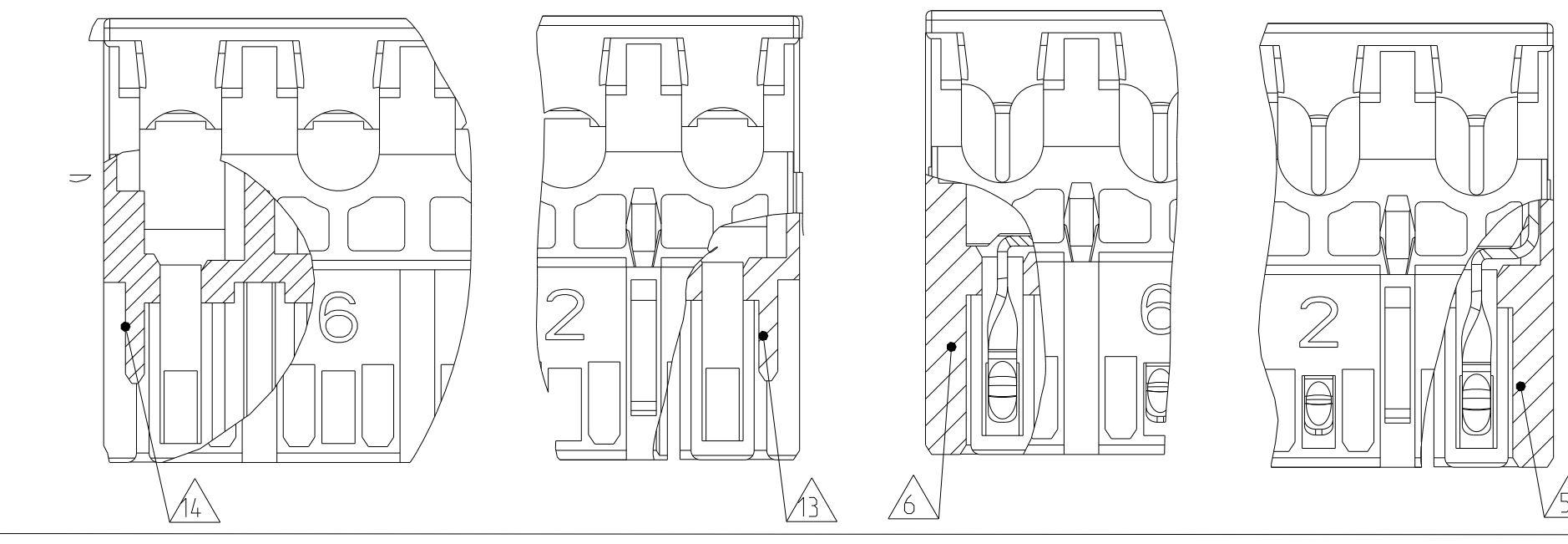
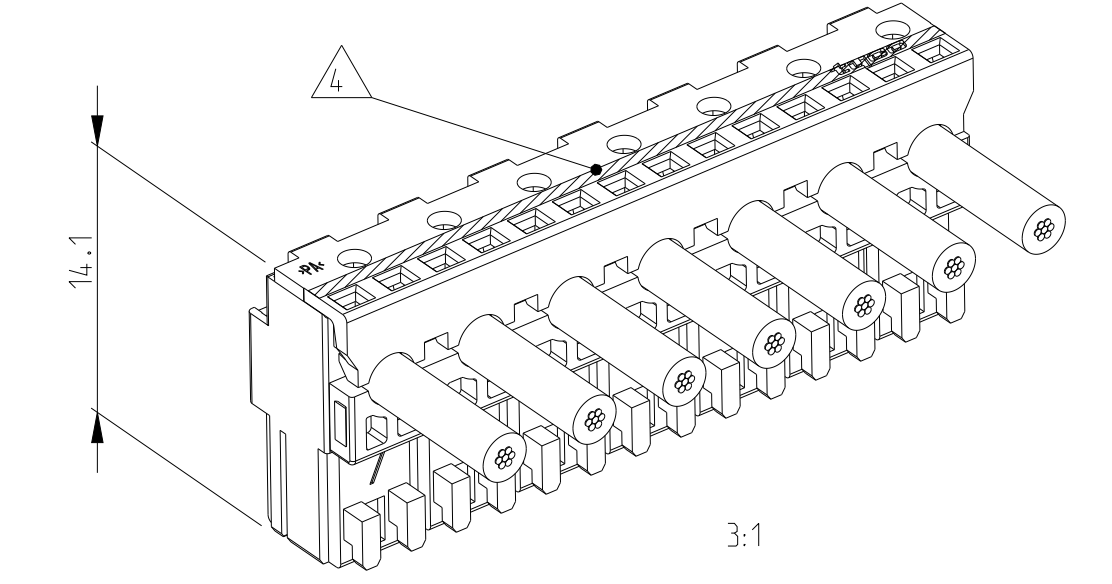


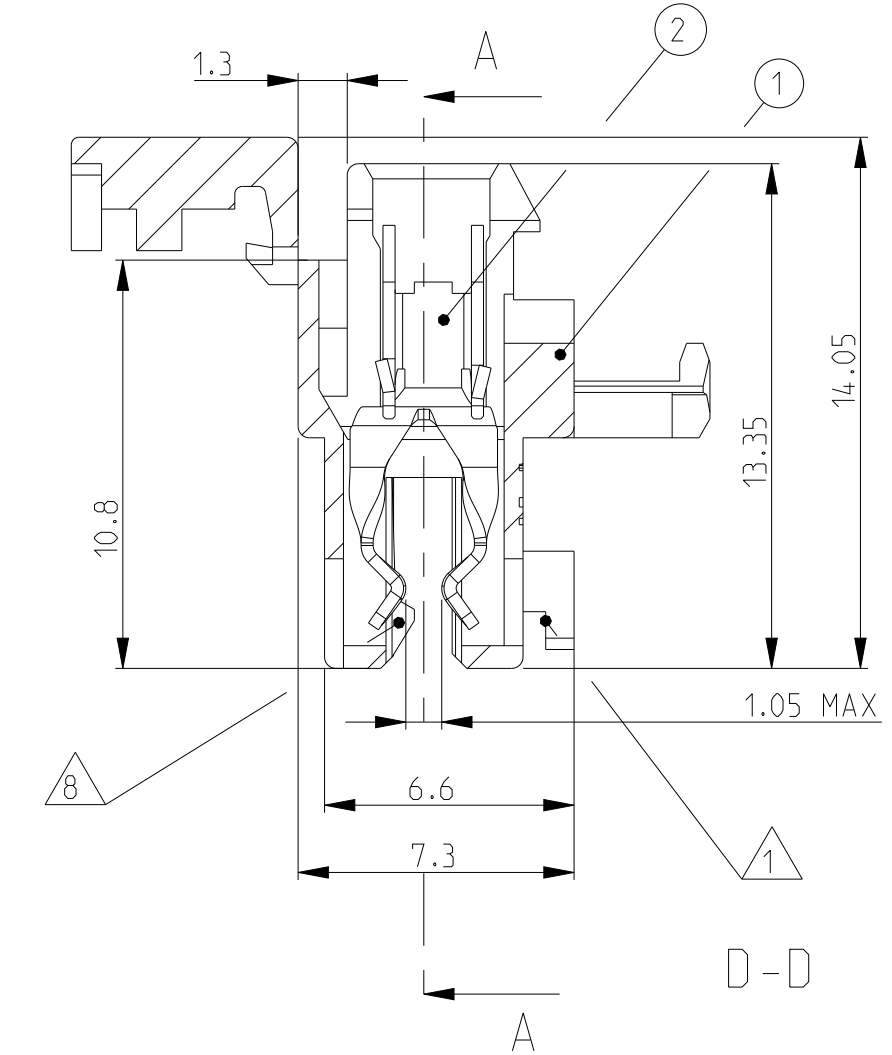
SIDE KEYING  
 Seitenkodierung A-A



LOC	DIST	REVISIONS			
		REV	DATE	BY	APPV
A1	-	B24	ECR-20-100619	05NOV2020	W W FL
		B25	ECR-21-108728	16AUG2021	SM FL
		B26	ECR-21-112826	14SEP2021	SM FL



- 27 SLOT FOR SIDE KEYING NARROW ON LAST CAVITY
- 26 PRELIMINARY PART NOT RELEASED FOR PRODUCTION
- 23 TE LOGO
- 24 COLOUR MARKING IN THIS AREA. COLOUR SEE TABLE.  
Farbmarkierung in diesem Bereich. Farbe siehe Tabelle.
- 23 X...CAVITY LOADED WITH CONTACT  
O...CAVITY WITHOUT CONTACT  
X...Kammer mit Kontakt bestückt  
O...Kammer ohne Kontakt
- 22 INCLUSIVE COPPER CLADDING, SINGLE OR DOUBLE SIDED  
Inklusive Kupferkaschierung, ein oder doppelseitig
- 21 PCB PREFERABLY CHAMFERED  
Leiterplatte vorzugsweise angefast
- 20 SLOT FOR ADDITIONAL KEYING RIB BETWEEN CAVITY NO.  
Schlitz fuer zusätzliche Kodierrippe zwischen Kammer Nr.
- 19 SLOT FOR SIDE KEYING NARROW AND REDUCED, ON CAVITY NO.1  
Schlitz fuer Seitenkodierung, eng und reduziert, bei Kammer Nr. 1
- 18 SLOT FOR SIDE KEYING, ON LAST CAVITY  
Schlitz fuer Seitenkodierung, bei letzter Kammer
- 17 SLOT FOR SIDE KEYING, ON CAVITY NO. 1  
Schlitz fuer Seitenkodierung, bei Kammer Nr. 1
- 16 IEC 60695-2-11 / IEC 60335-1 GLOW WIRE TEST 750 °C WITHOUT FLAME  
IEC 60695-2-11 / IEC 60335-1 Gluehdrahttest 750 °C ohne Flamme
- 15 -
- 14 SIDE KEYING, SMALL AND HALF, ON LAST CAVITY  
Seitenkodierung, schmal und halb, bei letzter Kammer
- 13 SIDE KEYING, SMALL AND HALF, ON CAVITY NO. 1  
Seitenkodierung, schmal und halb, bei Kammer Nr. 1
- 11-12 -
- 10 SIDE KEYING, SMALL, ON LAST CAVITY
- 9 -
- 8 LOCKING HOOK BETWEEN CAVITY NO. ...  
Rasthaken zwischen Kammernummer ...
- 7 ADDITIONAL KEYING RIB BETWEEN CAVITY NO.  
Zusätzliche Kodierrippe zwischen Kammer Nr.
- 6 SIDE KEYING, ON LAST CAVITY  
Seitenkodierung, bei letzter Kammer
- 5 SIDE KEYING, ON CAVITY NO. 1  
Seitenkodierung, bei Kammer Nr. 1
- 4 COLOUR MARKING ON TOP OF HOUSING OPTIONAL ON TERMINATION MACHINE  
Farbmarkierung auf Gehäuseoberseite optional an Verarbeitungsmaschine
- 3 MATING PART: PCB ACCORDING SHEET 2 OF 2  
Passender Gegenstecker: Leiterplatten siehe Blatt 2 von 2
- 2 WIRE RANGE: 0.35-0.75 mm<sup>2</sup> ACCORDING TO APPLICATION SPEC 114-18996  
Drahtgroessenbereich: 0.35 - 0.75 mm<sup>2</sup>; siehe Verarbeitungsspezifikation Nr.114-18996.
- 1 KEYING RIBS: CUTTING WITH TERMINATION MACHINE POSSIBLE  
Kodierrippe: Schneiden auf der Verarbeitungsmaschine moeglich



POS.	PN Betell-Nr.	DESCRIPTION Beschreibung	MATERIAL	COLOUR/FINISH Farbe/Oberflaeche
2	SEE TABLE	CONTACT	CuNiSi	TINNED/verzinkt
1	siehe Tabelle	HOUSING	PA6 GF $\Delta$ 6	NATURE/natur

THIS DRAWING IS A CONTROLLED DOCUMENT.

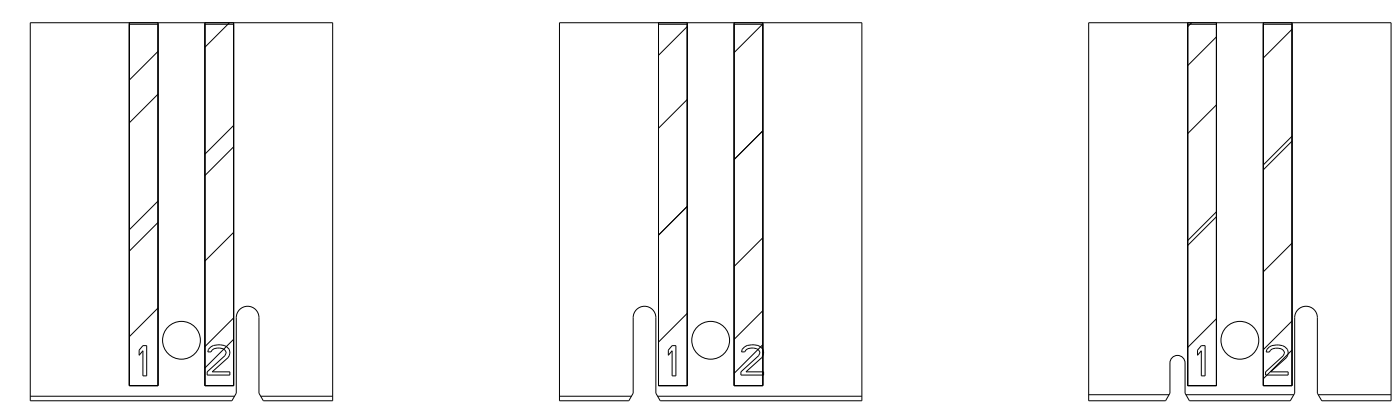
DIMENSIONS: mm	TOLERANCES UNLESS OTHERWISE SPECIFIED: 0 PLC $\pm 0.2$ 1 PLC $\pm 0.2$ 2 PLC $\pm 0.2$ 3 PLC $\pm 0.2$ 4 PLC $\pm 0.2$ ANGLES $\pm 0.2^\circ$ FINISH SEE TABLE	OWN H. Atzmann CHK B. Schnaubelt APPV T. Klenner	01NOV2005 01NOV2005 01NOV2005	NAME AMP DUOPLUG POWER FEMALE CONNECTOR 2-9 POSITION (WITH PCB LOCKING)	RESTRICTED TO
MATERIAL SEE TABLE	SEE TABLE	WEIGHT -	SCALE 5:1	SHEET 1 OF 4	REV B26

CUSTOMER DRAWING

**PCB LAYOUT  
 Leiterplattenanschluss**

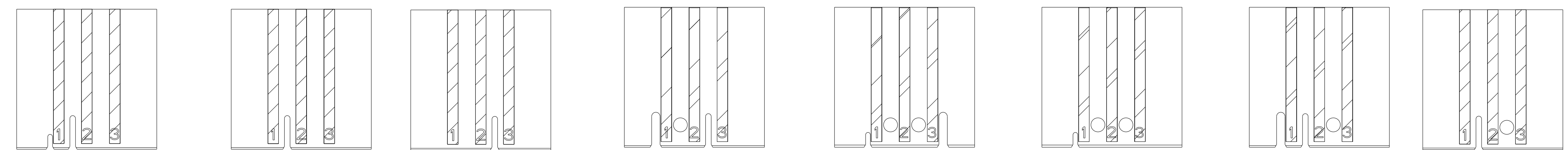
LOC		DIST		REVISIONS			
P	LTN	DESCRIPTION	DATE	DNW	APVD		
-	-	SEE SHEET 1	-	-	-		

2 POSITION  
 2 polig



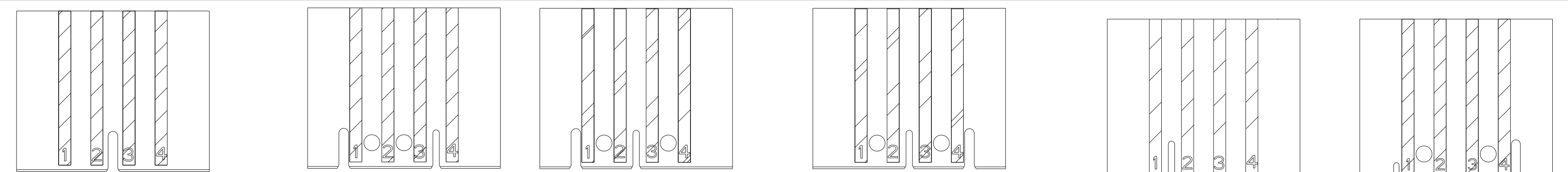
LAYOUT FOR CONNECTOR NO. 0-1740533-2      LAYOUT FOR CONNECTOR NO. 1-1740533-2      LAYOUT FOR CONNECTOR NO. 2-1740533-2

3 POSITION  
 3 polig



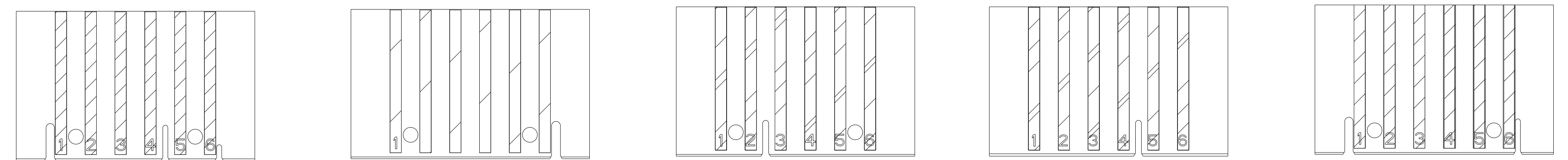
LAYOUT FOR CONNECTOR NO. 9-1740533-3      LAYOUT FOR CONNECTOR NO. 7-1740533-3      LAYOUT FOR CONNECTOR NO. 6-1740533-3      LAYOUT FOR CONNECTOR NO. 0-1740533-3      LAYOUT FOR CONNECTOR NO. 1-1740533-3      LAYOUT FOR CONNECTOR NO. 2-1740533-3      LAYOUT FOR CONNECTOR NO. 3-1740533-3 (W ITHOUT PAD 3)      LAYOUT FOR CONNECTOR NO. 4-1740533-3 (W ITHOUT PAD 1)      LAYOUT FOR CONNECTOR NO. 5-1740533-3

4 POSITION  
 4 polig



LAYOUT FOR CONNECTOR NO. 5-1740533-4      LAYOUT FOR CONNECTOR NO. 3-1740533-4      LAYOUT FOR CONNECTOR NO. 0-1740533-4 (W ITHOUT PAD 2)      LAYOUT FOR CONNECTOR NO. 1-1740533-4      LAYOUT FOR CONNECTOR NO. 2-1740533-4      LAYOUT FOR CONNECTOR NO. 4-1740533-4      LAYOUT FOR CONNECTOR NO. 6-1740533-4

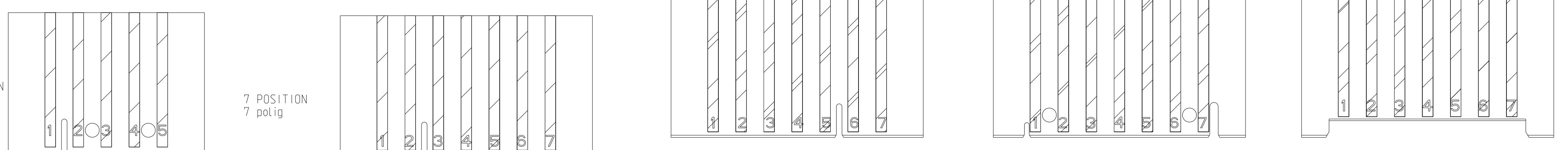
6 POSITION  
 6 polig



LAYOUT FOR CONNECTOR NO. 7-1740533-6      LAYOUT FOR CONNECTOR NO. 5-1740533-6      LAYOUT FOR CONNECTOR NO. 0-1740533-6 (W ITHOUT PAD 2/5/6)      LAYOUT FOR CONNECTOR NO. 1-1740533-6      LAYOUT FOR CONNECTOR NO. 2-1740533-6      LAYOUT FOR CONNECTOR NO. 3-1740533-6 (W ITHOUT PAD 2)      LAYOUT FOR CONNECTOR NO. 4-1740533-6

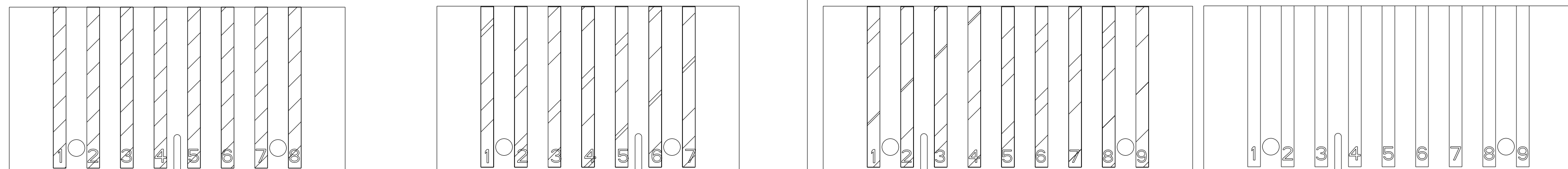
5 POSITION  
 5 polig

7 POSITION  
 7 polig



LAYOUT FOR CONNECTOR NO. 0-1740533-5      LAYOUT FOR CONNECTOR NO. 4-1740533-7      LAYOUT FOR CONNECTOR NO. 0-1740533-7      LAYOUT FOR CONNECTOR NO. 1-1740533-7      LAYOUT FOR CONNECTOR NO. 2-1740533-7

8 POSITION



LAYOUT FOR CONNECTOR NO. 0-1740533-8      LAYOUT FOR CONNECTOR NO. 3-1740533-7      LAYOUT FOR CONNECTOR NO. 0-1740533-9      LAYOUT FOR CONNECTOR NO. 1-1740533-9 (W ITHOUT PAD 9)      LAYOUT FOR CONNECTOR NO. 2-1740533-9

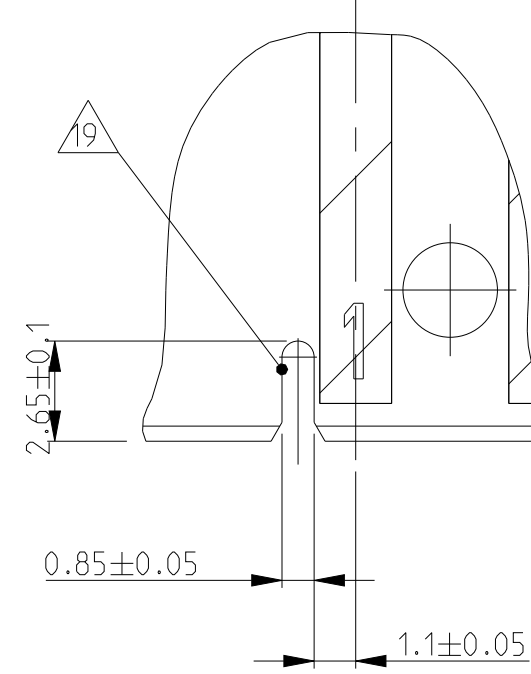
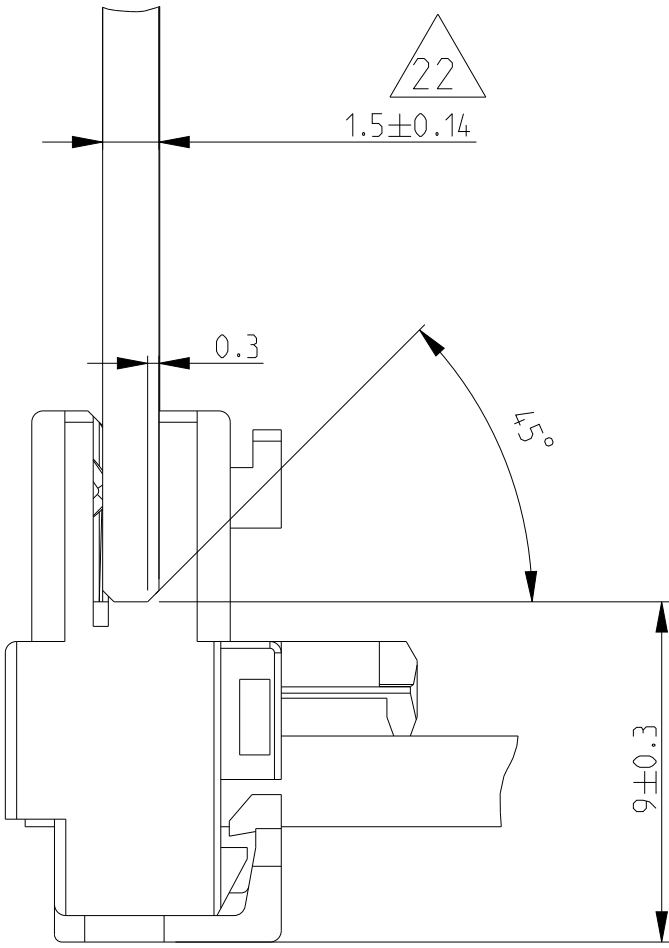
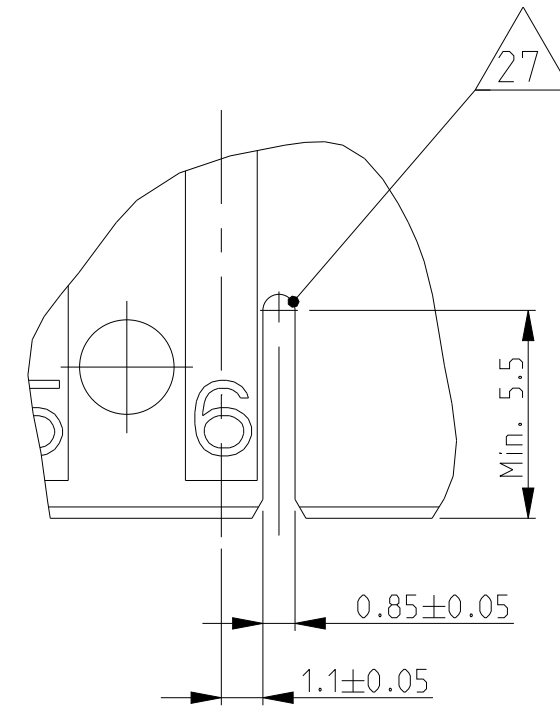
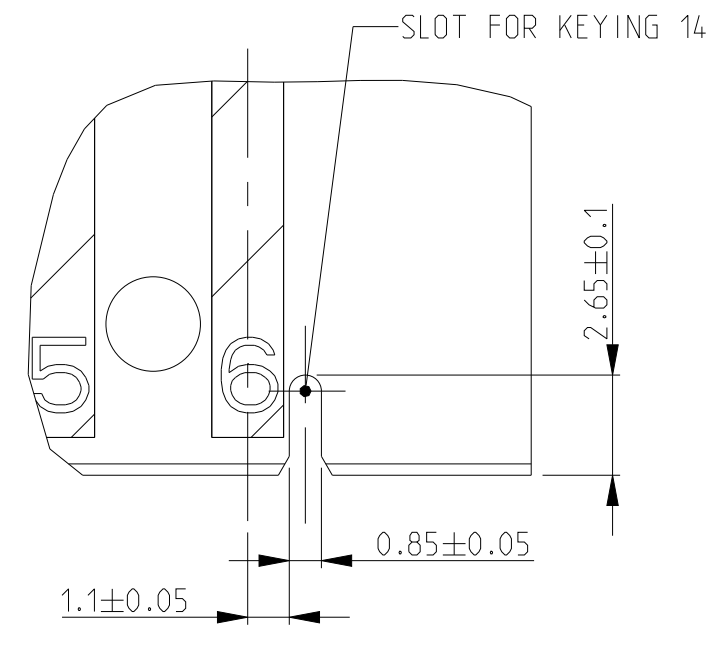
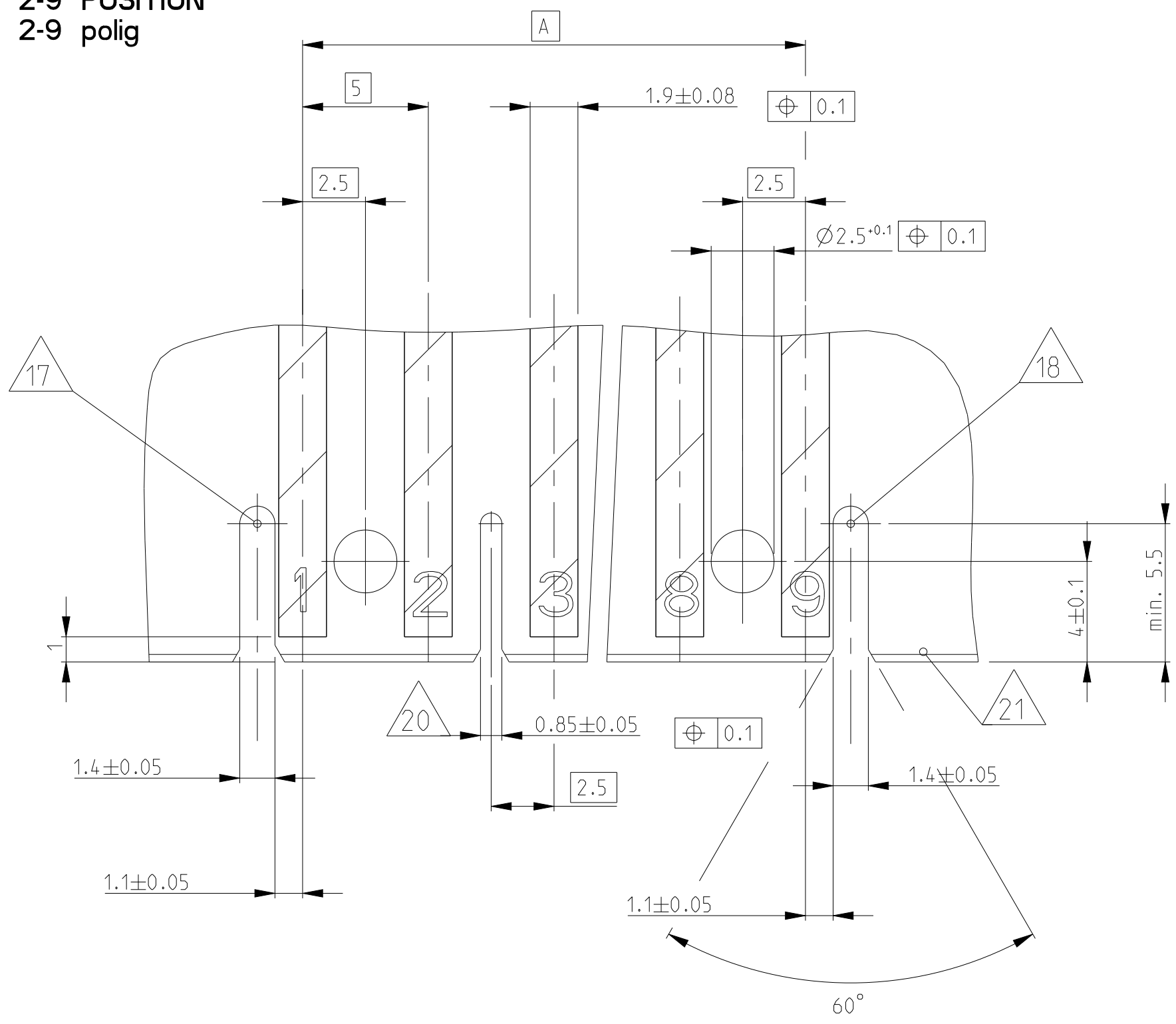
THIS DRAWING IS A CONTROLLED DOCUMENT. DIMENSIONS: mm. TOLERANCES UNLESS OTHERWISE SPECIFIED: 0 PLC ±0.2, 1 PLC ±0.2, 2 PLC ±0.2, 3 PLC ±0.2, 4 PLC ±, ANGLES ±°. MATERIAL: SEE TABLE. FINISH: SEE TABLE.

DNW: H. Atzmann	01NOV2005	 TE Connectivity NAME: AMP DUOPLUG POWER FEMALE CONNECTOR 2-9 POSITION (W ITH PEB LOCKING) PRODUCT SPEC: 108-18780 APPLICATION SPEC: 114-18996 WEIGHT: - SCALE: 5:1 SHEET 2 OF 4
CHK: B. Schnaubelt	01NOV2005	
APVD: T. Klenner	01NOV2005	
REVISIONS:		

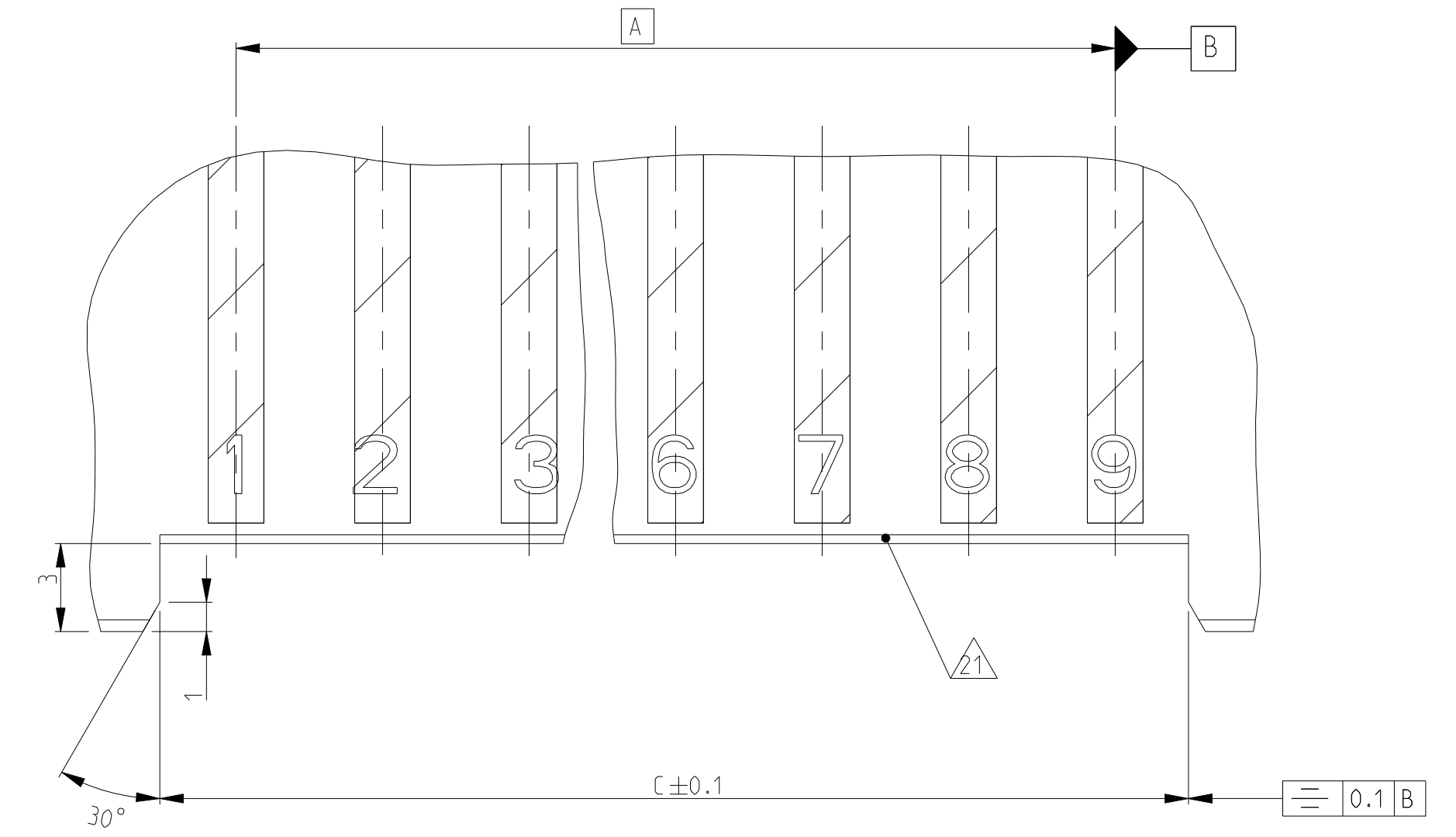
CAGE CODE: 00779      DRAWING NO: 1740533      SHEET 2 OF 4      REV: B26

**PCB LAYOUT IN GENERAL**  
**Leiterplattenanschluss allgemein**

2-9 POSITION  
 2-9 polig



**PCB LAYOUT FOR VERSIONS WITHOUT KEYING RIBS/  
 LOCKING HOOKS (E. G. PN 2-1740533-7)**  
**Leiterplattenanschluss fuer Version ohne Kodierrippen/  
 Rasthaken (z. B. Nr. 2-1740533-7)**



LOC	DIST	REVISIONS					
		P	LTN	DESCRIPTION	DATE	OWN	APVD
A1	-	-	-	SEE SHEET 1	-	-	-

THIS DRAWING IS A CONTROLLED DOCUMENT.

DIMENSIONS: mm	TOLERANCES UNLESS OTHERWISE SPECIFIED: 0 PLC ±0.2 1 PLC ±0.2 2 PLC ±0.2 3 PLC ±0.2 4 PLC ±0.2 ANGLES ±° ±2° FINISH SEE TABLE	OWN: SUDHAKAR 28OCT2013 CHK: SUDHAKAR 28OCT2013 APVD: RAJENDRA 28OCT2013	NAME: AMP DUOPLUG POWER FEMALE CONNECTOR 2-9 POSITION (WITH PEB LOCKING)
MATERIAL: SEE TABLE	SEE TABLE	SIZE: A1 CAGE CODE: 00779 DRAWING NO: C=1740533	RESTRICTED TO: CUSTOMER DRAWING

TE Connectivity

SCALE: 5:1 SHEET 3 OF 4 REV: B26

LOC		DIST		REVISIONS				
		P	LTN	DESCRIPTION	DATE	DWN	APVD	
A1	-	-	-	SEE SHEET 1	-	-	-	

GWEPT 750°C NO FLAME & UL94-V2 VERSIONS																					
COLOUR	9	8	7	6	5	4	3	2	1	POS.	DIM A	DIM B	DIM C	14	13	10	7	6	5	PN Bestell-Nr.	
										Polzahl				KEYING	KEYING	KEYING	KEYING	KEYING	KEYING	LOCKING HOOK	
	X	X	X	X	X	X	X	X	X	9	40	44.9	-	-	-	3/4	-	-	1/2 + 8/9	2-1740533-9	
0	X	X	X	X	X	X	X	X	X	9	40	44.9	-	-	-	2/3	-	-	1/2 + 8/9	1-1740533-9	
X	X	X	X	X	X	X	X	X	X	9	40	44.9	-	-	-	2/3	-	-	1/2 + 8/9	0-1740533-9	
GREEN	X	X	X	X	X	X	X	X	X	8	35	39.9	-	X	-	-	X	-	1/2 + 7/8	1-1740533-8	
GREEN	X	X	X	X	X	X	X	X	X	8	35	39.9	-	-	-	4/5	-	-	1/2 + 7/8	0-1740533-8	
-		X	X	X	X	X	X	X	X	7	30	34.9	-	-	-	2/3	-	-	-	4-1740533-7	
-		X	X	X	X	X	X	X	X	7	30	34.9	-	-	-	5/6	-	-	1/2 + 6/7	3-1740533-7	
-		X	X	X	X	X	X	X	X	7	30	34.9	35.1	-	-	-	-	-	-	2-1740533-7	
-		X	X	X	X	X	X	X	X	7	30	34.9	-	X	-	-	X	-	1/2 + 6/7	1-1740533-7	
-		X	X	X	X	X	X	X	X	7	30	34.9	-	-	-	5/6	-	-	-	0-1740533-7	
		X	X	X	X	X	X	X	X	6	25	29.9	-	X	-	-	4/5	-	X	1/2 + 5/6	7-1740533-6
		X	X	X	X	X	X	X	X	6	25	29.9	-	-	-	-	X	-	1/2 + 5/6	6-1740533-6	
		X	X	X	X	X	X	X	X	6	25	29.9	-	-	-	-	X	-	1/2 + 5/6	5-1740533-6	
		X	X	X	X	X	X	X	X	6	25	29.9	-	-	X	-	-	X	1/2 + 5/6	4-1740533-6	
BLACK		X	X	X	X	X	X	X	X	6	25	29.9	-	-	-	2/3	-	-	1/2 + 5/6	3-1740533-6	
-		X	X	X	X	X	X	X	X	6	25	29.9	-	-	-	4/5	-	-	-	2-1740533-6	
BLACK		X	X	X	X	X	X	X	X	6	25	29.9	-	-	-	2/3	-	-	1/2 + 5/6	1-1740533-6	
BLACK		0	0	X	X	0	X	X	X	6	25	29.9	-	-	-	2/3	-	-	1/2 + 5/6	0-1740533-6	
		X	X	X	X	X	X	X	X	5	20	24.95	-	X	-	-	1/2	X	-	4/5	3-1740533-5
		X	X	X	X	X	X	X	X	5	20	24.95	-	-	-	2/3	-	-	1/2 + 4/5	1-1740533-5	
		X	X	X	X	X	X	X	X	5	20	24.95	-	-	-	1/2	-	-	2/3 + 4/5	0-1740533-5	
		X	X	X	X	X	X	X	X	4	15	19.9	-	X	-	-	3/4	-	-	1/2	8-1740533-4
		X	X	X	X	X	X	X	X	4	15	19.9	-	-	-	1/2	-	-	3/4	7-1740533-4	
		X	X	X	X	X	X	X	X	4	15	19.9	-	X	-	-	1/2 + 3/4	-	-	6-1740533-4	
		X	X	X	X	X	X	X	X	4	15	19.9	-	-	-	2/3	-	-	-	5-1740533-4	
		X	X	X	X	X	X	X	X	4	15	19.9	-	-	-	1/2	-	-	-	4-1740533-4	
BROWN		X	X	X	X	X	X	X	X	4	15	19.9	-	-	-	3/4	-	X	1/2 + 2/3	3-1740533-4	
BROWN		X	X	X	X	X	X	X	X	4	15	19.9	-	-	-	2/3	-	X	1/2 + 3/4	2-1740533-4	
BLUE		X	X	X	X	X	X	X	X	4	15	19.9	-	-	-	2/3	X	-	1/2 + 3/4	1-1740533-4	
BROWN		X	X	0	X	X	X	X	X	4	15	19.9	-	-	-	2/3	-	X	1/2 + 3/4	0-1740533-4	
		X	X	X	X	X	X	X	X	3	10	14.9	-	X	-	-	1/2	-	-	9-1740533-3	
BLUE		X	X	X	X	X	X	X	X	3	10	14.9	-	X	-	-	1/2 + 2/3	-	-	8-1740533-3	
		X	X	X	X	X	X	X	X	3	10	14.9	-	-	-	1/2	-	-	-	7-1740533-3	
		X	X	X	X	X	X	X	X	3	10	14.9	-	-	-	2/3	-	-	-	6-1740533-3	
		X	X	X	X	X	X	X	X	3	10	14.9	-	-	-	1/2	-	-	2/3	5-1740533-3	
BLACK		0	X	X	X	X	X	X	X	3	10	14.9	-	-	-	1/2	-	X	2/3	4-1740533-3	
BLACK		0	X	X	X	X	X	X	X	3	10	14.9	-	-	-	1/2	-	X	2/3	3-1740533-3	
-		X	X	X	X	X	X	X	X	3	10	14.9	-	X	-	-	-	-	1/2 + 2/3	2-1740533-3	
-		X	X	X	X	X	X	X	X	3	10	14.9	-	X	-	-	X	-	1/2 + 2/3	1-1740533-3	
BLACK		X	X	X	X	X	X	X	X	3	10	14.9	-	-	-	2/3	-	X	1/2	0-1740533-3	
-		X	X	X	X	X	X	X	X	2	5	9.9	-	X	-	-	-	-	1/2	2-1740533-2	
RED		X	X	X	X	X	X	X	X	2	5	9.9	-	-	-	-	-	X	1/2	1-1740533-2	
GREEN		X	X	X	X	X	X	X	X	2	5	9.9	-	-	-	-	-	X	1/2	0-1740533-2	
COLOUR	9	8	7	6	5	4	3	2	1	POS.	DIM A	DIM B	DIM C	14	13	10	7	6	5	PN Bestell-Nr.	
														KEYING	KEYING	KEYING	KEYING	KEYING	KEYING	LOCKING HOOK	

GWEPT 750°C NO FLAME & UL94-V0 VERSIONS																				
COLOUR	9	8	7	6	5	4	3	2	1	POS.	DIM A	DIM B	DIM C	14	13	10	7	6	5	PN Bestell-Nr.
														KEYING	KEYING	KEYING	KEYING	KEYING	KEYING	LOCKING HOOK
RED	X	X	X	X	X	X	X	X	X	8	35	39.9	-	-	-	2/3	-	-	1/2 + 7/8	3-2395228-8
	X	X	X	X	X	X	X	X	X	8	35	39.9	-	-	-	3/4	-	-	1/2 + 7/8	2-2395228-8
				X	X	X	X	X	X	6	25	29.9	-	-	-	2/3	X	X	1/2 + 5/6	8-2395228-6
				X	X	X	X	X	X	4	15	19.9	-	X	-	-	X	-	1/2 + 3/4	6-2395228-4
				X	X	X	X	X	X	3	10	14.9	-	X	-	-	X	-	1/2 + 2/3	1-2395228-3
				X	X	X	X	X	X	2	5	9.9	-	X	-	-	X	-	1/2	2-2395228-2
COLOUR	9	8	7	6	5	4	3	2	1	POS.	DIM A	DIM B	DIM C	14	13	10	7	6	5	PN Bestell-Nr.
														KEYING	KEYING	KEYING	KEYING	KEYING	KEYING	LOCKING HOOK

THIS DRAWING IS A CONTROLLED DOCUMENT. DIMENSIONS: mm. TOLERANCES UNLESS OTHERWISE SPECIFIED: 0 PLC ±0.2, 1 PLC ±0.2, 2 PLC ±0.2, 3 PLC ±0.2, 4 PLC ±0.2, ANGLES FINISH ±0°.

OWN: H. Atzmann, CHK: B. Schnaubelt, APVD: T. Klenner. PRODUCT SPEC: 108-18780. APPLICATION SPEC: 114-18996. WEIGHT: -.

TE Connectivity. AMP DUOPLUG POWER FEMALE CONNECTOR 2-9 POSITION (WITH PEB LOCKING). SIZE: A1. CAGE CODE: 00779. DRAWING NO: 1740533. SCALE: 5:1. SHEET 4 OF 4. REV: B26.

## X-ON Electronics

Largest Supplier of Electrical and Electronic Components

*Click to view similar products for [Headers & Wire Housings](#) category:*

*Click to view products by [TE Connectivity](#) manufacturer:*

Other Similar products are found below :

[892-18-020-10-001101](#) [58102-G61-06LF](#) [582553-1](#) [0009485154](#) [009176003701906](#) [0050291907](#) [LY20-4P-DT1-P1E-BR](#) [02.125.8002.8](#)  
[609-3404](#) [61062-3](#) [61082-181009](#) [622-3653LF](#) [63453-116](#) [636-1030](#) [636-1427](#) [636-3427](#) [636-4007](#) [641938-9](#) [641991-4](#) [644827-2](#) [65817-](#)  
[010LF](#) [65817-015LF](#) [65863-015LF](#) [66207-023LF](#) [67095-007LF](#) [67601157](#) [68645-018](#) [68648-049](#) [70.362.1628.0](#) [70-4210](#) [70-4226B](#) [70-](#)  
[4853B](#) [707-5020](#) [707-5028](#) [71.350.2428.0](#) [71918-208LF](#) [71961-016LF](#) [733-134](#) [733-162](#) [754199-000](#) [760-3052](#) [787-8014-00](#) [79531-3000](#)  
[FCN-360C032-B](#) [FCN-367T-T012/H](#) [FCN-723D010/2](#) [80.063.4001.1](#) [800-90-001-10-001000](#) [800-90-010-10-002000](#) [801-43-002-10-013000](#)