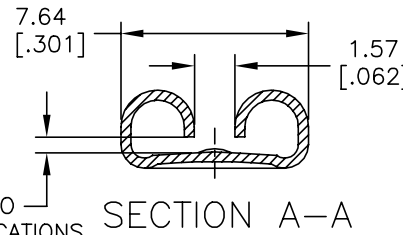
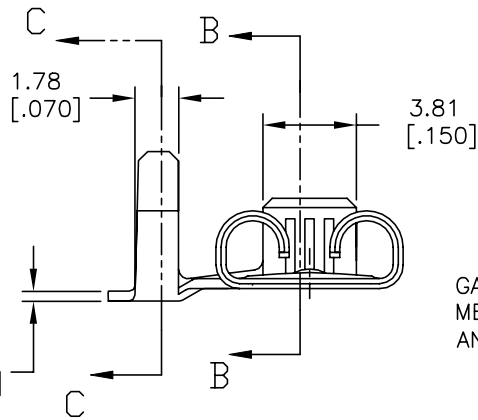
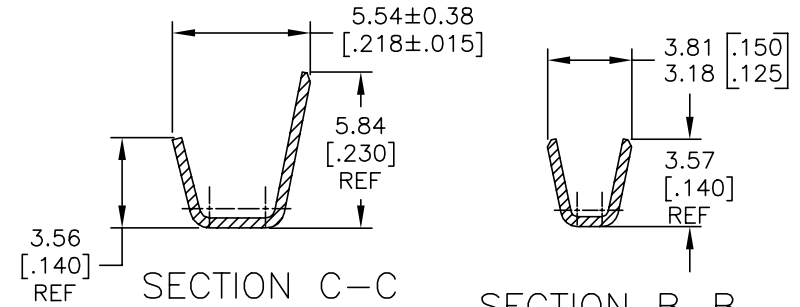
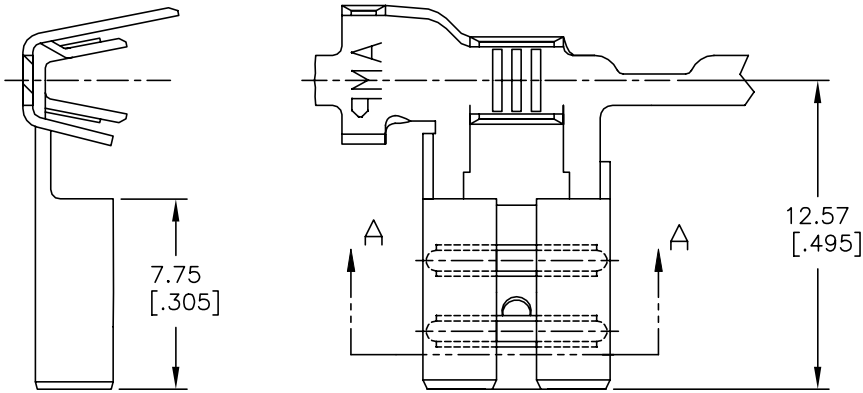


THIS DRAWING IS UNPUBLISHED. RELEASED FOR PUBLICATION  
 © COPYRIGHT - By - ALL RIGHTS RESERVED.

REVISIONS				
P	LTR	DESCRIPTION	DATE	APVD
A4		REVISED PER ECR-20-009164	14AUG2020	MK DH

- CONTINUOUS STRIP ON REELS.
- WIRE SIZE #18-#14 AWG.
- INSULATION DIA 2.79-4.06 [.110-.160].
- MATING TAB THK IS 0.84-0.76 [.033-.030]
- RECEPTACLE IS DESIGNED TO OPTIMIZE MATING AND UNMATING FORCES ON A TAB WITH A RETENTION HOLE. VALUES MAY VARY ON A TAB WITH A DETENT.

WITH STRESS RELIEF PROCESS.



GAP AS REQUIRED TO MEET FORCE SPECIFICATIONS AND 0.71 [.028] MAX

TIN PLATE	1742999-3
TIN PLATE	1742999-2
-----	1742999-1
FINISH	PART NO.

DIMENSIONS:		TOLERANCES UNLESS OTHERWISE SPECIFIED:		DWN		TE Connectivity	
mm[INCHES]		0 PLC	± -	JR RUTH	30NOV2012		
		1 PLC	± -	CHK	30NOV12		
		2 PLC	± 0.25[.010]	PETE DESANTIS			
		3 PLC	± -	APVD	30NOV12		
		4 PLC	± -	PETE DESANTIS		NAME	
		ANGLES	± -	PRODUCT SPEC		RECEPTACLE, FLAG FASTON, .250 SERIES	
				APPLICATION SPEC		DRAWING NO	
MATERIAL	FINISH			WEIGHT		SIZE	RESTRICTED TO
BRASS	SEE TABLE					CAGE CODE	
				CUSTOMER DRAWING		DRAWING NO	
						SCALE	
						SHEET	
						REV	
							A4

## X-ON Electronics

Largest Supplier of Electrical and Electronic Components

*Click to view similar products for [Terminals](#) category:*

*Click to view products by [TE Connectivity](#) manufacturer:*

Other Similar products are found below :

[00-054007-01074-6](#) [00-054007-70206-1](#) [00-054007-70210-8](#) [00-054007-70217-7](#) [00-054007-70226-9](#) [00-054007-70228-3](#) [00-054007-70248-1](#) [00-054007-70256-6](#) [00-054007-70301-3](#) [00-054007-70316-7](#) [0-0320562-0](#) [00-054007-49560-4](#) [00-054007-70209-2](#) [00-054007-70225-2](#) [00-054007-70227-6](#) [00-054007-70231-3](#) [00-054007-70241-2](#) [00-054007-70242-9](#) [00-054007-70244-3](#) [00-054007-70246-7](#) [00-054007-70263-4](#) [00-054007-70288-7](#) [00-054007-70290-0](#) [00-054007-70300-6](#) [00-054007-70304-4](#) [01-2065-1-0216](#) [01-2900-1-04412](#) [00581P0075](#) [600TS-10](#) [60205-1](#) [604200-1](#) [605601-1](#) [60598-1-CUT-TAPE](#) [61314-6-C](#) [61810-3](#) [61-S](#) [61-SN](#) [626-0194](#) [62-NBM-A](#) [62-SN](#) [62-SP](#) [63-S](#) [640179-1](#) [M55155/059I03](#) [M55155/079C01](#) [M55155/099H02](#) [M55155/109H01](#) [M55155/109H02](#) [M55155/12XH05](#) [M55155/16XH02](#)