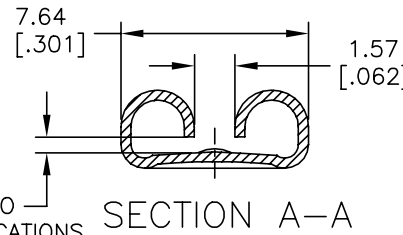
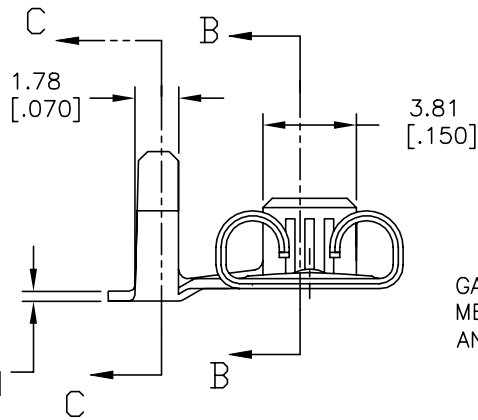
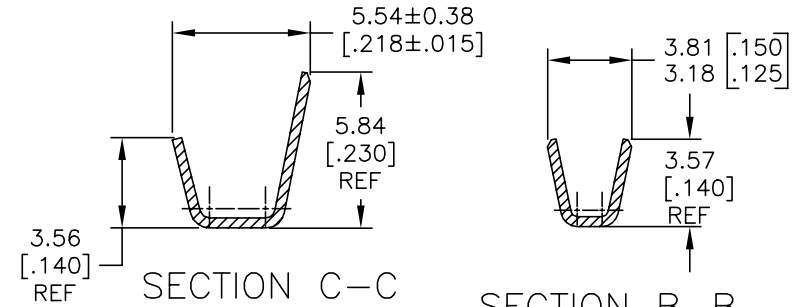
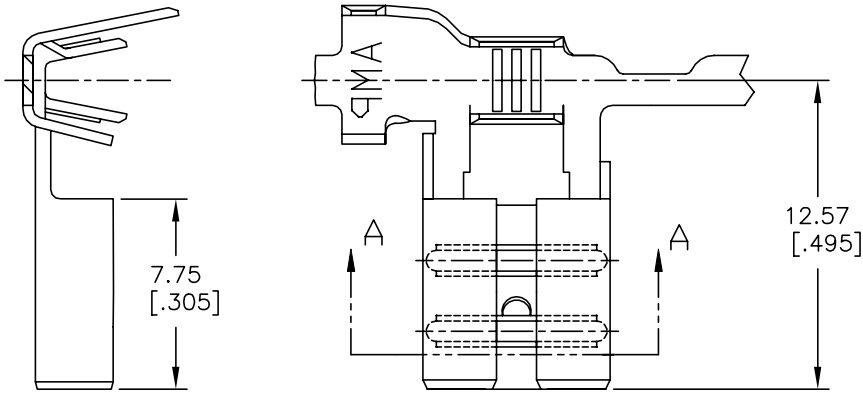


THIS DRAWING IS UNPUBLISHED. RELEASED FOR PUBLICATION  
 © COPYRIGHT - By - ALL RIGHTS RESERVED.

| REVISIONS |     |                           |           |       |
|-----------|-----|---------------------------|-----------|-------|
| P         | LTR | DESCRIPTION               | DATE      | APVD  |
| A4        |     | REVISED PER ECR-20-009164 | 14AUG2020 | MK DH |

- CONTINUOUS STRIP ON REELS.
- WIRE SIZE #18-#14 AWG.
- INSULATION DIA 2.79-4.06 [.110-.160].
- MATING TAB THK IS 0.84-0.76 [.033-.030]
- RECEPTACLE IS DESIGNED TO OPTIMIZE MATING AND UNMATING FORCES ON A TAB WITH A RETENTION HOLE. VALUES MAY VARY ON A TAB WITH A DETENT.

WITH STRESS RELIEF PROCESS.



GAP AS REQUIRED TO MEET FORCE SPECIFICATIONS AND 0.71 [.028] MAX

|           |           |
|-----------|-----------|
| TIN PLATE | 1742999-3 |
| TIN PLATE | 1742999-2 |
| -----     | 1742999-1 |
| FINISH    | PART NO.  |

| DIMENSIONS: |           | TOLERANCES UNLESS OTHERWISE SPECIFIED: |              | DWN              |           | TE Connectivity                      |               |
|-------------|-----------|--|--------------|------------------|-----------|--------------------------------------|---------------|
| mm[INCHES]  |           | 0 PLC                                  | ± -          | JR RUTH          | 30NOV2012 |                                      |               |
|             |           | 1 PLC                                  | ± -          | CHK              | 30NOV12   |                                      |               |
|             |           | 2 PLC                                  | ± 0.25[.010] | PETE DESANTIS    |           |                                      |               |
|             |           | 3 PLC                                  | ± -          | APVD             | 30NOV12   |                                      |               |
|             |           | 4 PLC                                  | ± -          | PETE DESANTIS    |           | NAME                                 |               |
|             |           | ANGLES                                 | ± -          | PRODUCT SPEC     |           | RECEPTACLE, FLAG FASTON, .250 SERIES |               |
|             |           |  |              | APPLICATION SPEC |           | SIZE                                 | CAGE CODE     |
| MATERIAL    | FINISH    |  |              |                  |           | DRAWING NO                           | RESTRICTED TO |
| BRASS       | SEE TABLE |  |              | WEIGHT           |           | A3 00779                             | C=1742999     |
|             |           |  |              | CUSTOMER DRAWING | SCALE     | 5:1                                  | SHEET         |
|             |           |  |              |                  |           | 1 OF 1                               | REV           |
|             |           |  |              |                  |           |                                      | A4            |

## X-ON Electronics

Largest Supplier of Electrical and Electronic Components

*Click to view similar products for [Terminals](#) category:*

*Click to view products by [TE Connectivity](#) manufacturer:*

Other Similar products are found below :

[00-054007-01074-6](#) [00-054007-70206-1](#) [00-054007-70210-8](#) [00-054007-70217-7](#) [00-054007-70226-9](#) [00-054007-70228-3](#) [00-054007-70248-1](#) [00-054007-70256-6](#) [00-054007-70301-3](#) [00-054007-70316-7](#) [0-0320562-0](#) [00-054007-49560-4](#) [00-054007-70209-2](#) [00-054007-70225-2](#) [00-054007-70227-6](#) [00-054007-70231-3](#) [00-054007-70241-2](#) [00-054007-70242-9](#) [00-054007-70244-3](#) [00-054007-70246-7](#) [00-054007-70263-4](#) [00-054007-70288-7](#) [00-054007-70290-0](#) [00-054007-70300-6](#) [00-054007-70304-4](#) [01-2065-1-0216](#) [01-2900-1-04412](#) [00581P0075](#) [600TS-10](#) [60205-1](#) [604200-1](#) [605601-1](#) [60598-1-CUT-TAPE](#) [61314-6-C](#) [61810-3](#) [61-S](#) [61-SN](#) [626-0194](#) [62-NBM-A](#) [62-SN](#) [62-SP](#) [63-S](#) [640179-1](#) [M55155/059I03](#) [M55155/079C01](#) [M55155/099H02](#) [M55155/109H01](#) [M55155/109H02](#) [M55155/12XH05](#) [M55155/16XH02](#)