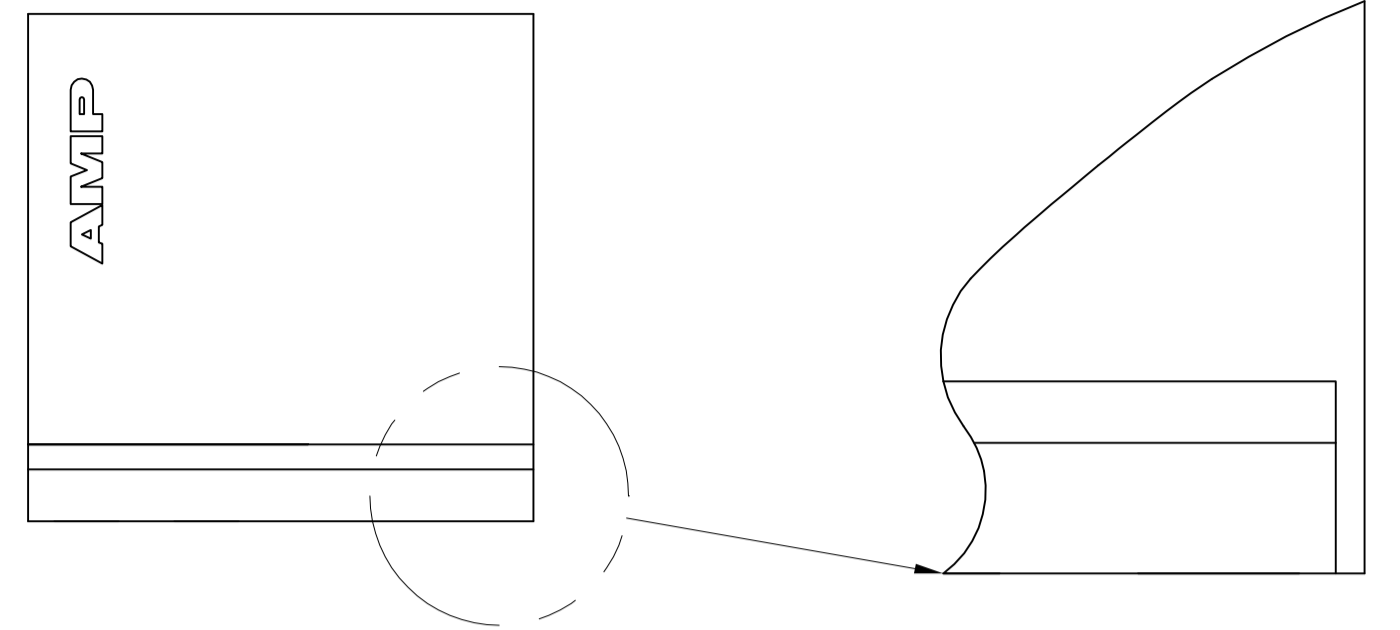
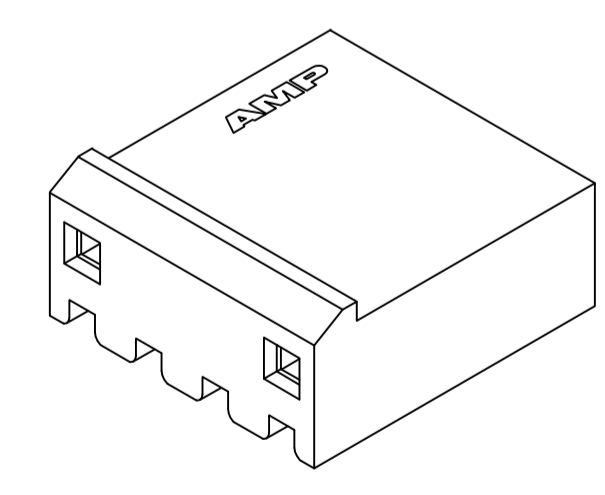
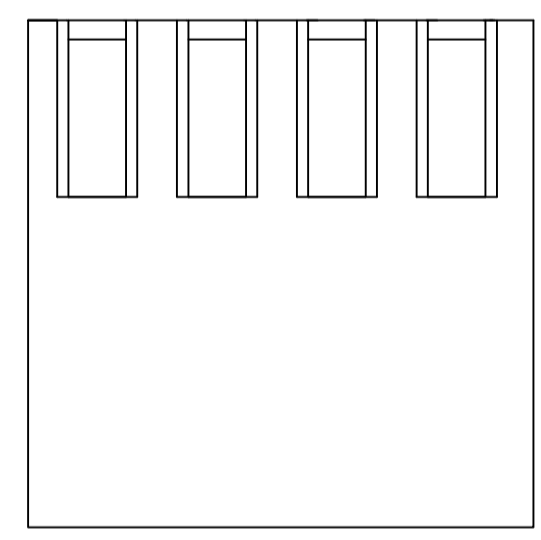
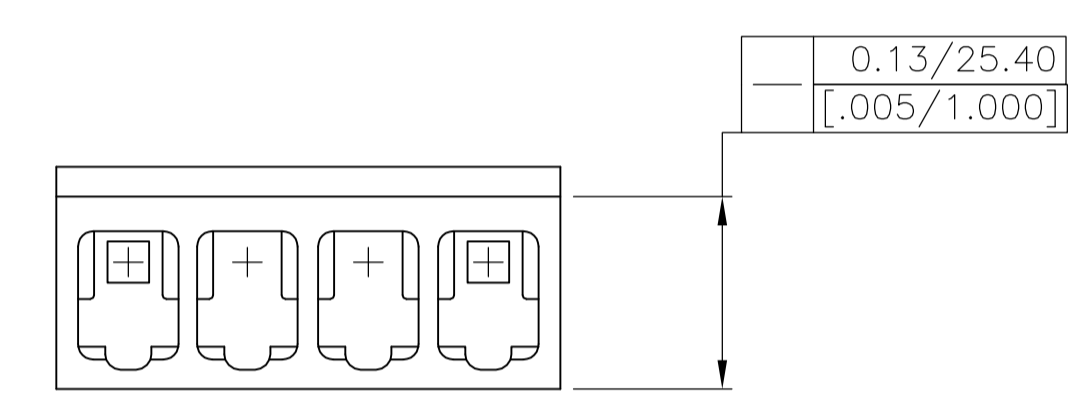
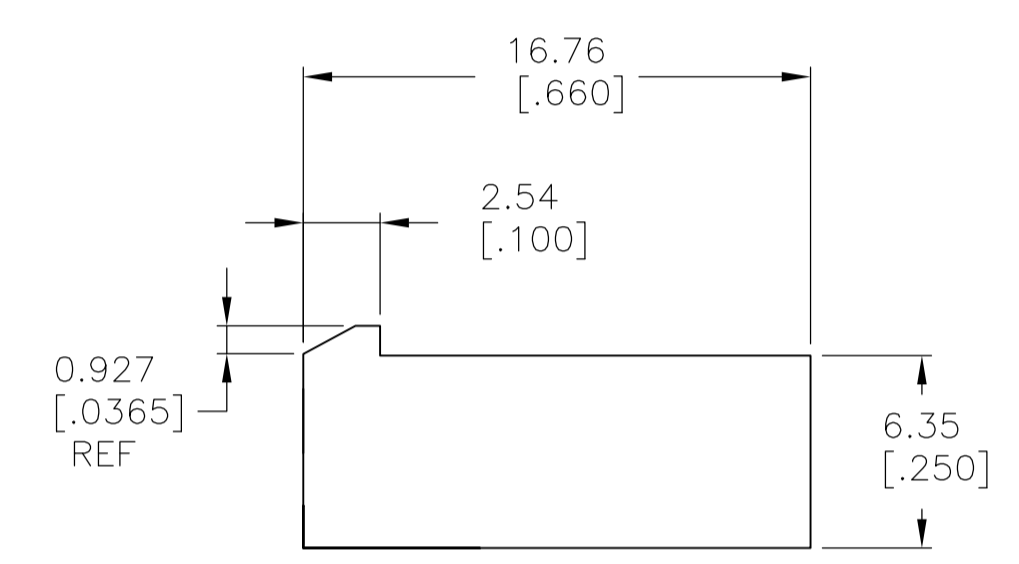
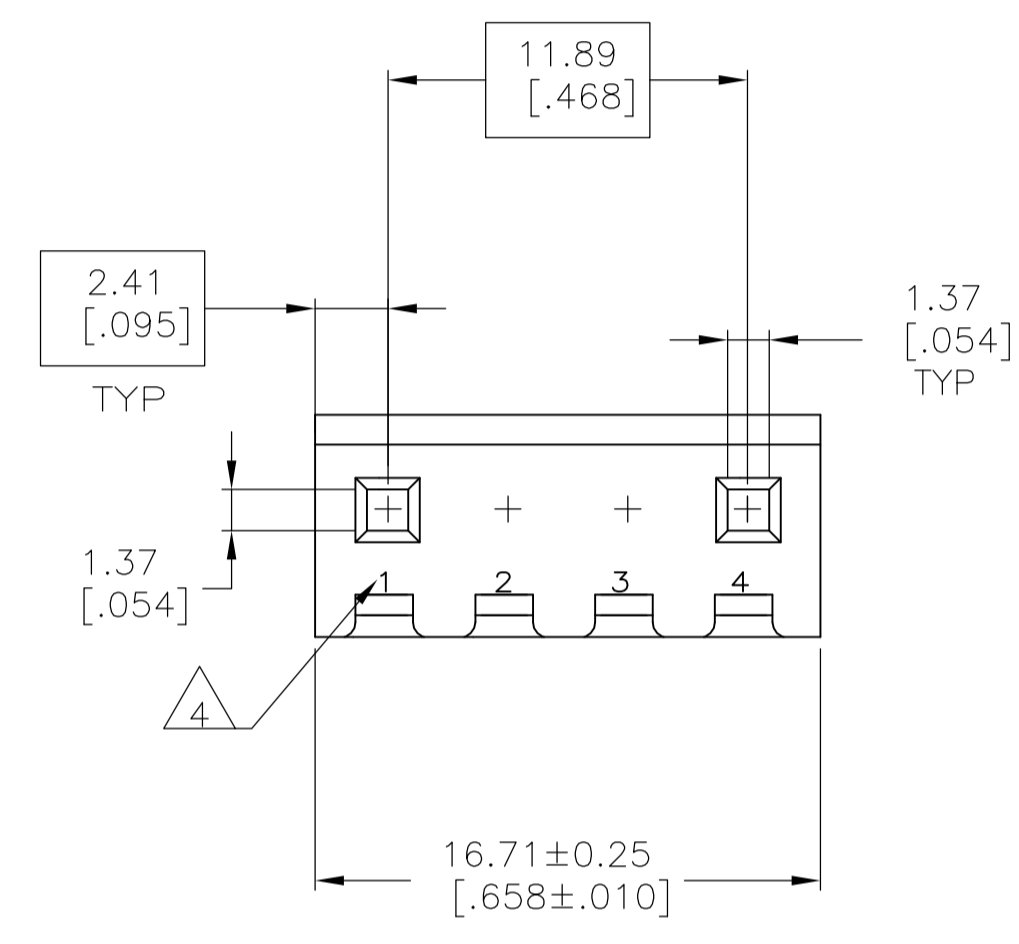


LOC	DIST	REVISIONS			
CM	00	REVISED PER	ECR-13-003272	DATE	18JUN13
				BY	KW
				APP'D	TM



SCALE 10:1 $\triangle 6$

1. UNIT ACCEPTS 1.14 [.045] SQUARE OR ROUND POST.
2. UNIT ACCEPTS STANDARD SL-156 CONTACTS.
3. UNIT ACCEPTS KEYING PLUG 640254-1 AND KEYING PIN 640255-1.
- $\triangle 4$ CIRCUIT I.D. NUMBER(S), TO BE LOCATED SEQUENTIALLY AS SHOWN.
5. DIMENSIONS IN BRACKETS ARE IN INCHES.
- $\triangle 6$ OPTIONAL CONSTRUCTION (BOTH CORNERS) UP TO 0.38[.015].
7. ACCEPTS UP TO .110 INCH INSULATION WIRE.



3-DIMENSIONAL MODEL NTS

2 & 3	4	1744137-4
CIRCUIT NO BLOCKED	NO OF CIRCUITS	PART

THIS DRAWING IS A CONTROLLED DOCUMENT.		DWG	K. WHITAKER	16NOV2005	 TE Connectivity
DIMENSIONS: mm [INCHES]		CHK	D. ROSSI	16NOV2005	
TOLERANCES UNLESS OTHERWISE SPECIFIED:		APP'D	D. ROSSI	16NOV2005	NAME
0 PLG	± -	PRODUCT SPEC			HOUSING WITH LOCKING RAMP, SL-156, FOR LARGE WIRE INSULATION
1 PLG	± -	APPLICATION SPEC			
2 PLG	± -	WEIGHT			
3 PLG	± 0.13 [.005]	SCALE			
4 PLG	± -	SHEET			RESTRICTED TO
ANGLES	± 0° 30'	CUSTOMER DRAWING			REV
MATERIAL	NYLON,UL94V-0,NAT	A1 00779 C=1744137			1 OF 1

X-ON Electronics

Largest Supplier of Electrical and Electronic Components

Click to view similar products for [Headers & Wire Housings](#) category:

Click to view products by [TE Connectivity](#) manufacturer:

Other Similar products are found below :

[892-18-020-10-001101](#) [58102-G61-06LF](#) [582553-1](#) [0009485154](#) [009176003701906](#) [0050291907](#) [LY20-4P-DT1-P1E-BR](#) [02.125.8002.8](#)
[609-3404](#) [61062-3](#) [61082-181009](#) [622-3653LF](#) [63453-116](#) [636-1030](#) [636-1427](#) [636-3427](#) [636-4007](#) [641938-9](#) [641991-4](#) [644827-2](#) [65817-](#)
[010LF](#) [65817-015LF](#) [65863-015LF](#) [66207-023LF](#) [67095-007LF](#) [67601157](#) [68645-018](#) [68648-049](#) [70.362.1628.0](#) [70-4210](#) [70-4226B](#) [70-](#)
[4853B](#) [707-5020](#) [707-5028](#) [71.350.2428.0](#) [71918-208LF](#) [71961-016LF](#) [733-134](#) [733-162](#) [754199-000](#) [760-3052](#) [787-8014-00](#) [79531-3000](#)
[FCN-360C032-B](#) [FCN-367T-T012/H](#) [FCN-723D010/2](#) [80.063.4001.1](#) [800-90-001-10-001000](#) [800-90-010-10-002000](#) [801-43-002-10-013000](#)