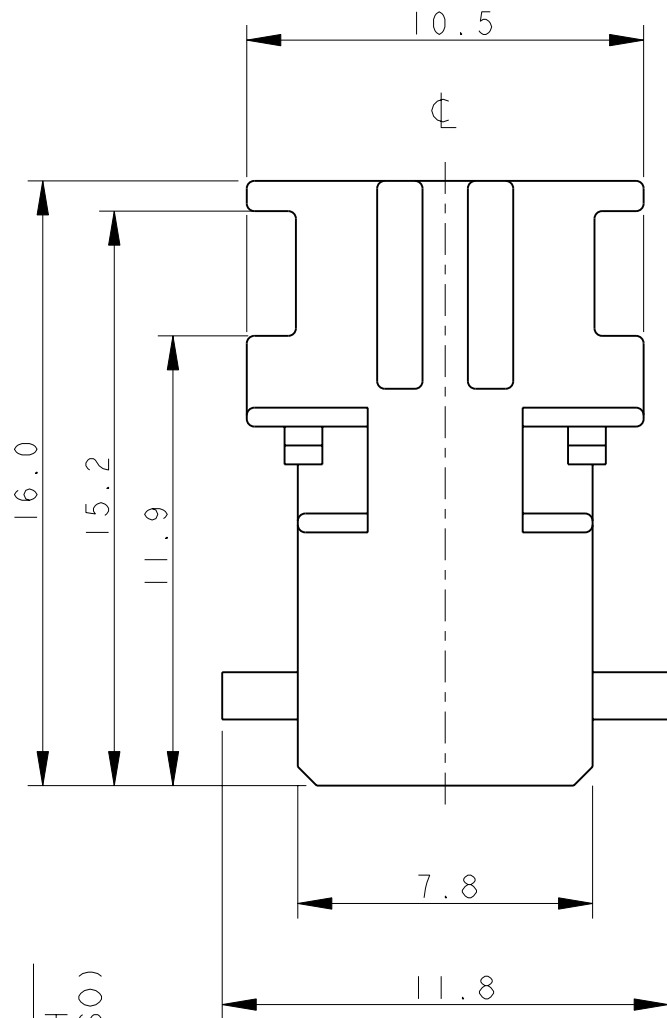
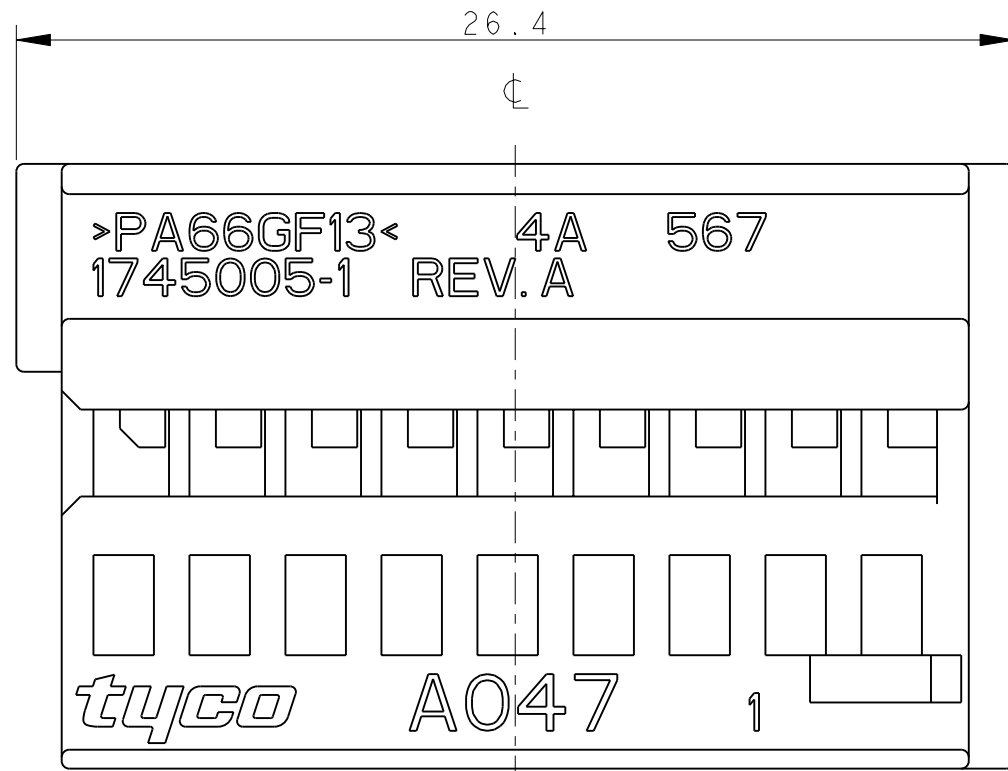


THIS DRAWING IS UNPUBLISHED.
QUESTO DISEGNO NON DEVE ESSERE DIVULGATO O RIPRODOTTO
© COPYRIGHT 2003 Tyco Electronics AMP GmbH

RELEASED FOR PUBLICATION
E' CONSENTITA LA DIVULGAZIONE
2003
ALL RIGHTS RESERVED.
TUTTI I DIRITTI SONO RISERVATI

LOC 1
DIST -

REVISIONS		DESCRIPTION	DATE	DWN	APVD
REVISIONI		DESCRIZIONE	DATA	DIS.	APP.
P	LTR REV				
	0	EMISSIONE PRELIMINARE (PRELIMINARY ISSUE)	07MAR2003	M.S.	O.C.
	1	ERA (WAS) P/N 03-51039-3	04NOV2003	M.S.	O.C.
	A	PRIMA EMISSIONE (FIRST ISSUE) ET00-0043-04	11JUN2004	M.P.	O.C.
	A1	RILASCIATO IN PRODUZIONE (RELEASED FOR PRODUCTION) ET00-0239-04	04FEB2005	M.P.	O.C.
	A2	ECR-11-017843	05SEP2011	M.P.	O.C.

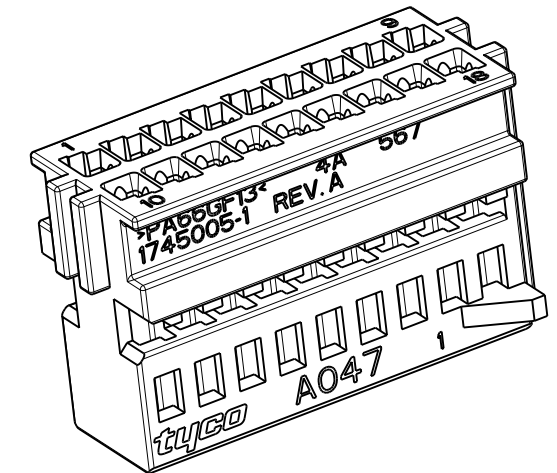


NOTES:
(NOTE)

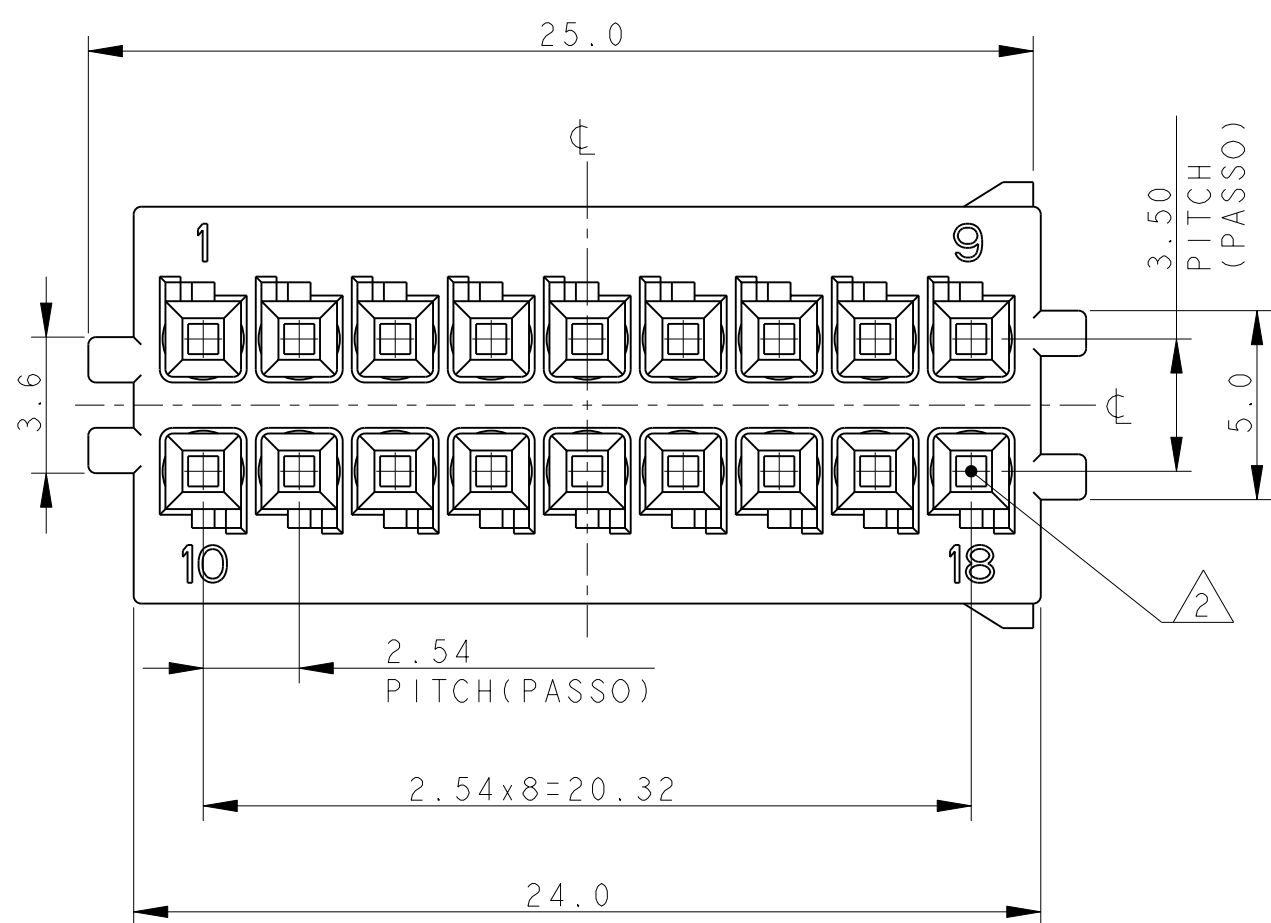
1) HOUSING MATERIAL: PA66 GF COLOUR BLACK
(MATERIALE BLOCCHETTO: PA66 CARICATO VETRO COLORE NERO)

2) CAVITIES SUITABLE FOR REC. MQS CONTACT
P/N 928999-1
(CAVITA' ADATTE PER CONTATTO FEMMINA MQS P/N 928999-1)

3) HOUSING SUITABLE FOR FRAME 18 POSITIONS
P/N 1745003-1
(PORTAFEMMINE ADATTO PER CORAZZA 18 POSIZIONI P/N 1745003-1)



P/N 1745005-1 BLACK AS SHOWN
(NERO COME MOSTRATO)

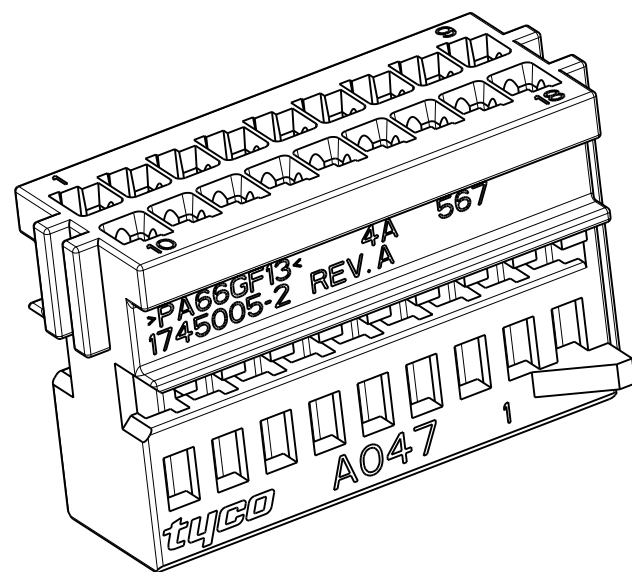
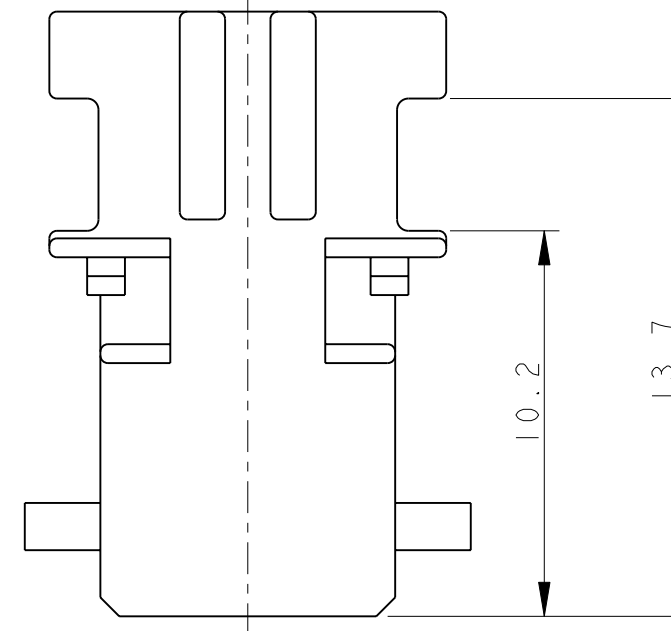
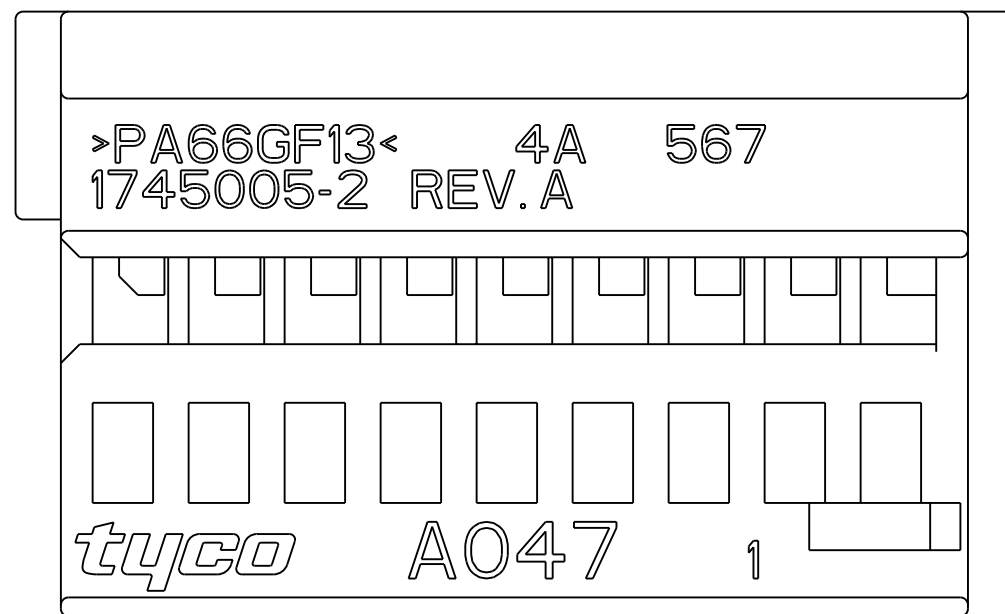


THIS DRAWING IS A CONTROLLED DOCUMENT. QUESTO DISEGNO E' UN DOCUMENTO DI PROPRIETA' E RESPONSABILITA' DELL' AMP INCORPORATED. E' SOGGETTO A VARIAZIONI. PER OTTENERE L'ULTIMA REVISIONE DEL DISEGNO CONTATTARE L'UFFICIO TECNICO RESPONSABILE.	
DIMENSIONS: DIMENSIONI: mm	TOLERANCES UNLESS OTHERWISE SPECIFIED: TOLLERANZE: SE NON DIVERSAMENTE SPECIFICATO
	0 PLC/DEC ±0.5 1 PLC/DEC ±0.3 2 PLC/DEC ±0.2 3 PLC/DEC ± 4 PLC/DEC ± ANGLES / ANGOLI ±1°
MATERIAL MATERIALE	FINISH FINITURA

DWN/DIS. M. SARDI	07MAR2003
CHK/CONT. O. CANUTO	07MAR2003
APVD/APP. A. GENTA	07MAR2003
PRODUCT SPEC SPEC. DI PRODOTTO	108-20182
APPLICATION SPEC SPEC. DI APPLICAZIONE	411-20056
WEIGHT PESO	-

		TE Connectivity			
		NAME NOME			
18 POS. MQS RECEPTACLE HOUSING PITCH 2.54mm (PORTAFEMMINE MQS 18 VIE PASSO 2.54mm)		SIZE A3	CAGE CODE 00779	DRAWING NO NUMERO 1745005	RESTRICTED TO
CUSTOMER DRAWING		DISEGNO PER CLIENTE SOLO PER RIFERIMENTO		SCALE SCALA 5:1	SHEET FOGLIO 1 OF DI 2
				REV A2	

LOC	DIST	REVISIONS					
		P	LTR	DESCRIPTION	DATE	DWN	APVD
1	-	-	-	SEE SHEET 1	-	-	-





SCALE 3:1

3) HOUSING SUITABLE FOR FRAME 18 POSITIONS
 P/N 1745003-2
 (PORTAFEMMINE ADATTO PER CORAZZA 18
 POSIZIONI P/N 1745003-2)

P/N 1745005-2 COLOUR GRAY AS SHOWN
 (COLORE GRIGIO COME MOSTRATO)

FOR MISSING DIMENSIONS AND NOTES SEE P/N 1745005-1 (SHEET 1/2)
 (PER LE DIMENSIONI E NOTE MANCANTI VEDI P/N 1745005-1 (FOGLIO 1/2))

THIS DRAWING IS A CONTROLLED DOCUMENT.		DWN M. SARDI 07MAR2003	 TE Connectivity	
DIMENSIONS: mm		CHK O. CANUTO 07MAR2003		
TOLERANCES UNLESS OTHERWISE SPECIFIED:		APVD A. GENTA 07MAR2003	NAME 18 POS. MQS RECEPTACLE HOUSING PITCH 2.54mm (PORTAFEMMINE MQS 18 VIE PASSO 2.54mm)	
0 PLC ±0.5 1 PLC ±0.3 2 PLC ±0.2 3 PLC ± 4 PLC ± ANGLES ±°		PRODUCT SPEC 108-20182	SIZE A300779	
MATERIAL		APPLICATION SPEC 411-20056	CAGE CODE C=1745005	DRAWING NO 1745005
FINISH		WEIGHT -	RESTRICTED TO -	
		CUSTOMER DRAWING		SCALE 5:1
				SHEET 2 OF 2
				REV A2

X-ON Electronics

Largest Supplier of Electrical and Electronic Components

Click to view similar products for [Automotive Connectors](#) category:

Click to view products by [TE Connectivity](#) manufacturer:

Other Similar products are found below :

[003-018-000](#) [60403001](#) [60993906-B](#) [M902-2131](#) [M902-2161](#) [72.330.1035.1](#) [73.353.4028.0](#) [F119300-B](#) [F166900](#) [F258300-B](#) [F358300-B](#)
[F407400](#) [F444110](#) [F487000](#) [F509500B-B](#) [827153-1](#) [8N1515-32-24P](#) [9-1326729-8](#) [925474-1](#) [928905-1](#) [964562-4](#) [968782-1](#) [GT17SA-8DS-](#)
[HU](#) [98891-1012](#) [98947-1016](#) [12004147](#) [12004475-L](#) [12010290](#) [12010309-B](#) [12015454](#) [12020219-B](#) [12020308](#) [12041318-B](#) [12052225-L](#)
[12052466](#) [12059125](#) [12064869](#) [12004327-B](#) [12010503-B](#) [12015308](#) [12015384](#) [12015909](#) [1-21030-1](#) [12041254](#) [12041318](#) [12047946-B](#)
[12047957](#) [12047957-L](#) [12059473](#) [12066261](#)