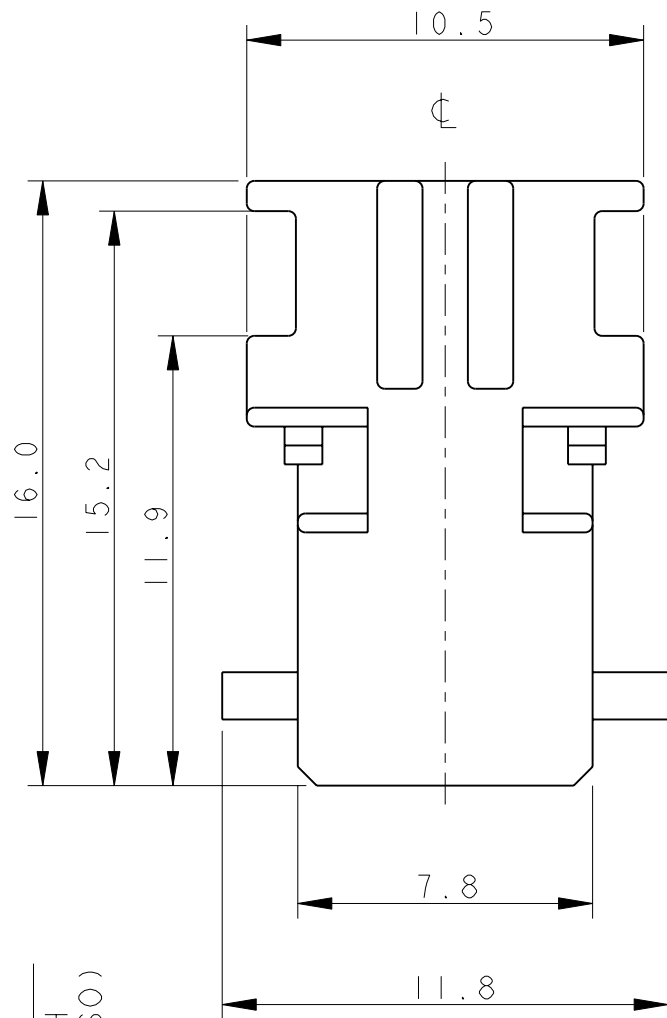
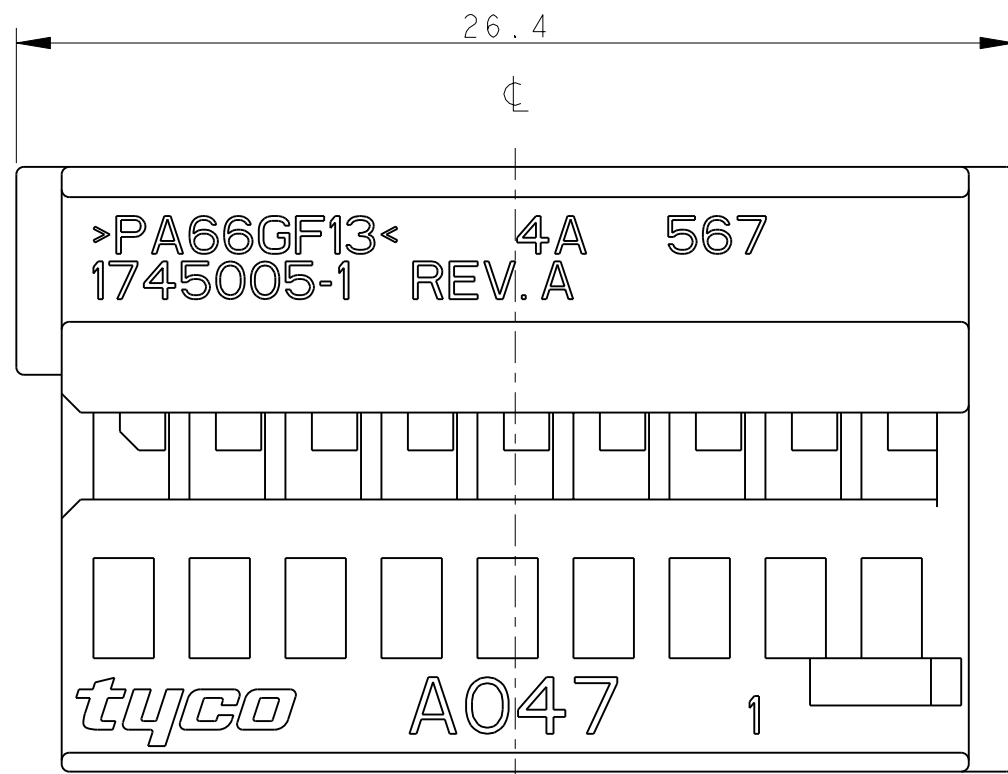


THIS DRAWING IS UNPUBLISHED.  
QUESTO DISEGNO NON DEVE ESSERE DIVULGATO O RIPRODOTTO  
© COPYRIGHT 2003 Tyco Electronics AMP GmbH

RELEASED FOR PUBLICATION  
E' CONSENTITA LA DIVULGAZIONE  
2003  
ALL RIGHTS RESERVED.  
TUTTI I DIRITTI SONO RISERVATI

LOC 1  
DIST -

REVISIONS		DESCRIPTION	DATE	DWN	APVD
REVISIONI		DESCRIZIONE	DATA	DIS.	APP.
P	LTR REV				
	0	EMISSIONE PRELIMINARE (PRELIMINARY ISSUE)	07MAR2003	M.S.	O.C.
	1	ERA (WAS) P/N 03-51039-3	04NOV2003	M.S.	O.C.
	A	PRIMA EMISSIONE (FIRST ISSUE) ET00-0043-04	11JUN2004	M.P.	O.C.
	A1	RILASCIATO IN PRODUZIONE (RELEASED FOR PRODUCTION) ET00-0239-04	04FEB2005	M.P.	O.C.
	A2	ECR-11-017843	05SEP2011	M.P.	O.C.

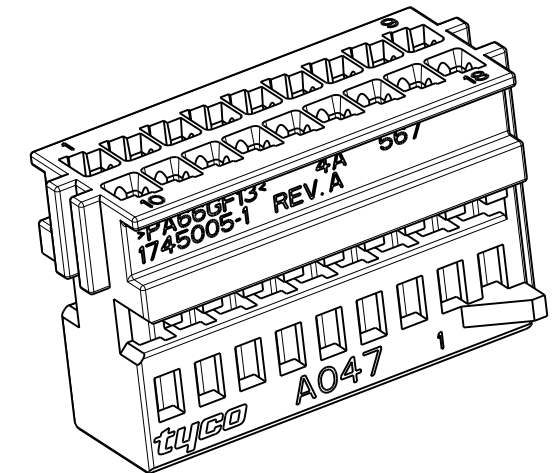


**NOTES:**  
**(NOTE)**

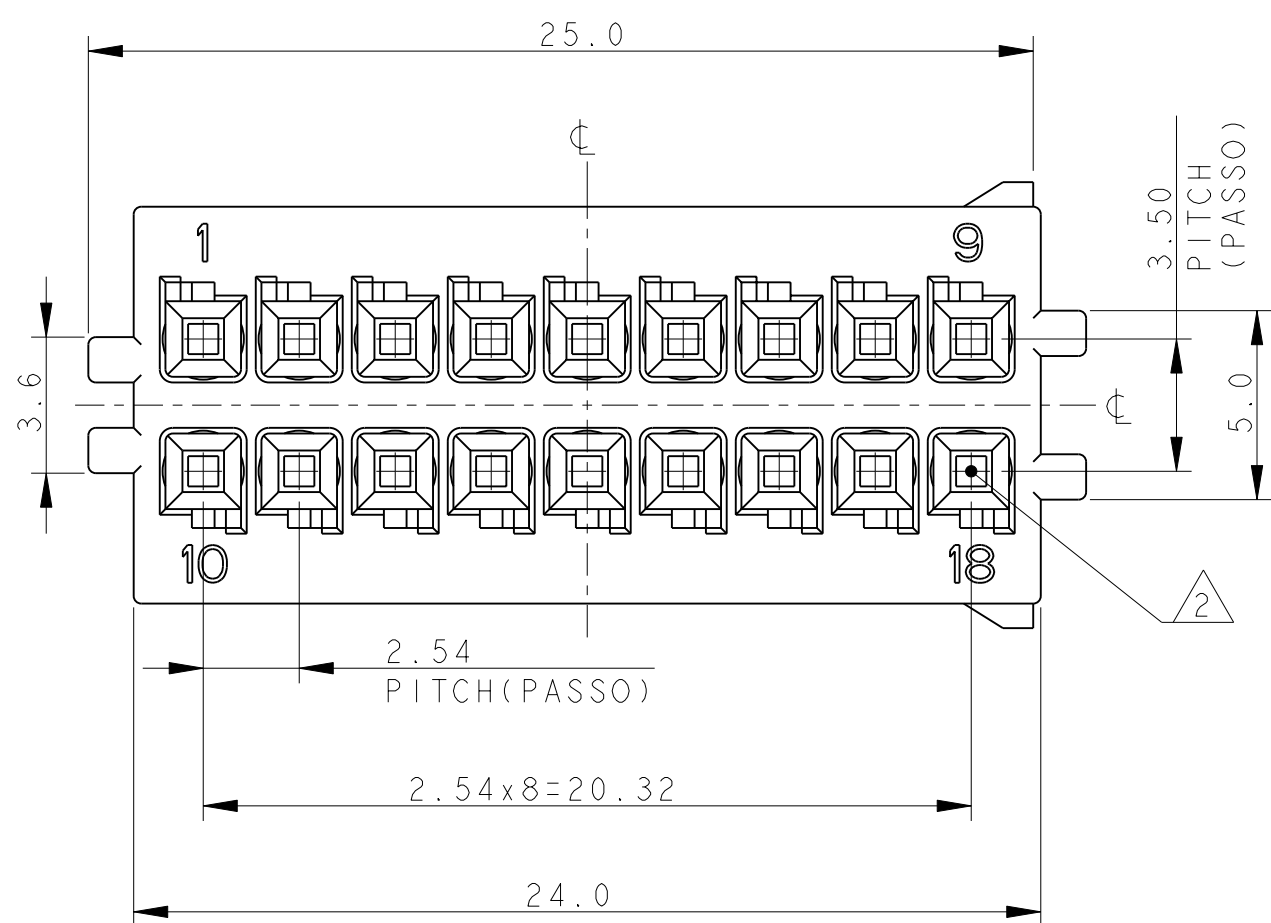
1) HOUSING MATERIAL: PA66 GF COLOUR BLACK  
(MATERIALE BLOCCHETTO: PA66 CARICATO VETRO COLORE NERO)



2) CAVITIES SUITABLE FOR REC. MQS CONTACT  
P/N 928999-1  
(CAVITA' ADATTE PER CONTATTO FEMMINA MQS P/N 928999-1)

3) HOUSING SUITABLE FOR FRAME 18 POSITIONS  
P/N 1745003-1  
(PORTAFEMMINE ADATTO PER CORAZZA 18 POSIZIONI P/N 1745003-1)

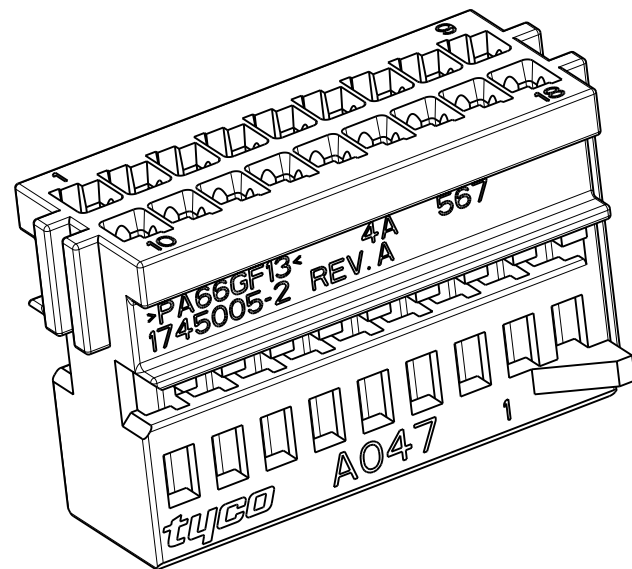
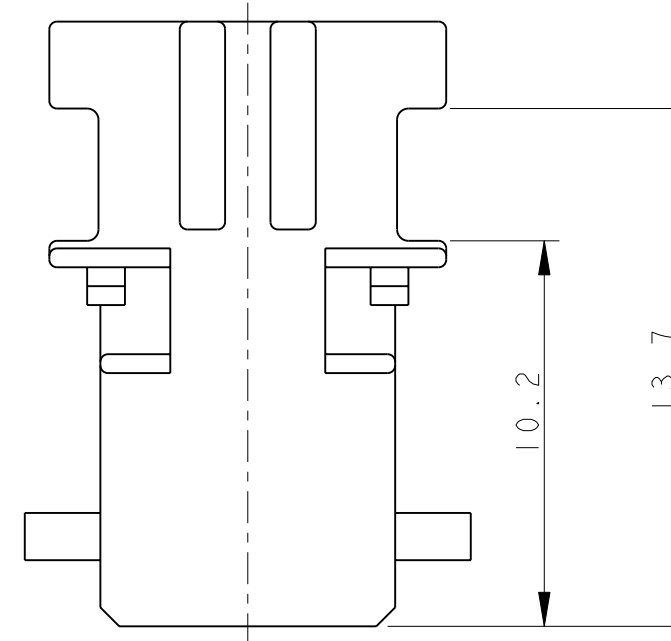
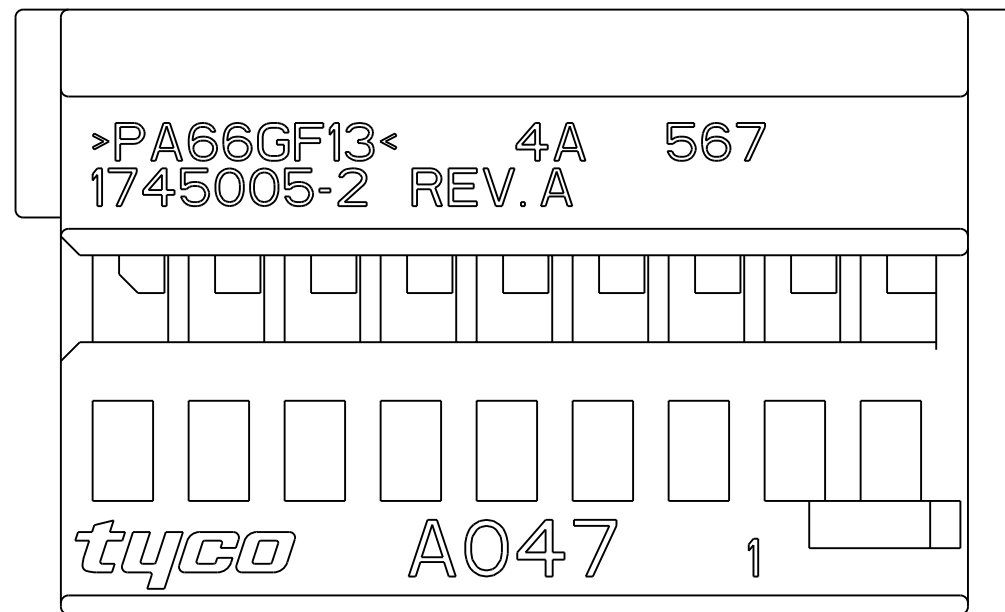


**P/N 1745005-1 BLACK AS SHOWN**  
(NERO COME MOSTRATO)



THIS DRAWING IS A CONTROLLED DOCUMENT. QUESTO DISEGNO E' UN DOCUMENTO DI PROPRIETA' E RESPONSABILITA' DELL' AMP INCORPORATED. E' SOGGETTO A VARIAZIONI. PER OTTENERE L'ULTIMA REVISIONE DEL DISEGNO CONTATTARE L'UFFICIO TECNICO RESPONSABILE.		DWN/DIS. 07MAR2003 M. SARDI	 <b>TE Connectivity</b>	
DIMENSIONS: DIMENSIONI: mm		CHK/CONT. 07MAR2003 O. CANUTO		
TOLERANCES UNLESS OTHERWISE SPECIFIED: TOLLERANZE: SE NON DIVERSAMENTE SPECIFICATO		APVD/APP. 07MAR2003 A. GENTA	NAME 18 POS. MQS RECEPTACLE HOUSING	
0 PLC/DEC ±0.5		PRODUCT SPEC SPEC. DI PRODOTTO 108-20182	PITCH 2.54mm (PORTAFEMMINE MQS 18 VIE PASSO 2.54mm)	
1 PLC/DEC ±0.3		APPLICATION SPEC SPEC. DI APPLICAZIONE 411-20056	SIZE A3	CAGE CODE 00779
2 PLC/DEC ±0.2		WEIGHT PESO -	DRAWING NO. NUMERO 1745005	RESTRICTED TO -
3 PLC/DEC ±			CUSTOMER DRAWING	
4 PLC/DEC ±			DISEGNO PER CLIENTE SOLO PER RIFERIMENTO	
ANGLES / ANGOLI ±1°		SCALE 5:1		SHEET FOGLIO 1 OF DI 2
MATERIAL MATERIALE		FINISH FINITURA		REV A2

LOC	DIST	REVISIONS					
		P	LTR	DESCRIPTION	DATE	DWN	APVD
1	-	-	-	SEE SHEET 1	-	-	-





3) HOUSING SUITABLE FOR FRAME 18 POSITIONS  
P/N 1745003-2  
(PORAFEMMINE ADATTO PER CORAZZA 18  
POSIZIONI P/N 1745003-2)

**P/N 1745005-2 COLOUR GRAY AS SHOWN**  
(COLORE GRIGIO COME MOSTRATO)

SCALE 3:1

FOR MISSING DIMENSIONS AND NOTES SEE P/N 1745005-1 (SHEET 1/2)  
(PER LE DIMENSIONI E NOTE MANCANTI VEDI P/N 1745005-1 (FOGLIO 1/2))

THIS DRAWING IS A CONTROLLED DOCUMENT.		DWN M. SARDI 07MAR2003	 TE Connectivity	
DIMENSIONS: mm		CHK O. CANUTO 07MAR2003		
TOLERANCES UNLESS OTHERWISE SPECIFIED:		APVD A. GENTA 07MAR2003	NAME 18 POS. MQS RECEPTACLE HOUSING PITCH 2.54mm (PORTAFEMMINE MQS 18 VIE PASSO 2.54mm)	
0 PLC ±0.5 1 PLC ±0.3 2 PLC ±0.2 3 PLC ± 4 PLC ± ANGLES ±°		PRODUCT SPEC 108-20182	SIZE A300779	
MATERIAL		APPLICATION SPEC 411-20056	DRAWING NO C=1745005	
FINISH		WEIGHT -	RESTRICTED TO -	
		CUSTOMER DRAWING		SCALE 5:1
				SHEET 2 OF 2
				REV A2

## X-ON Electronics

Largest Supplier of Electrical and Electronic Components

*Click to view similar products for [Automotive Connectors](#) category:*

*Click to view products by [TE Connectivity](#) manufacturer:*

Other Similar products are found below :

[003-018-000](#) [600858](#) [60403001](#) [60993906-B](#) [60993913-B](#) [629515004020001](#) [M83723/71R1808N L/C](#) [M902-2131](#) [M902-2161](#) [M902-2344](#)  
[72.330.1035.1](#) [73.353.4028.0](#) [F118010](#) [F119300-B](#) [F132210](#) [F166900](#) [F180100](#) [F258300](#) [F258300-B](#) [F294300-B](#) [F339100](#) [F339700](#)  
[F358300-B](#) [F374110](#) [F407400](#) [F412210](#) [F444110](#) [F487000](#) [F495100](#) [F500900-B](#) [F509500B-B](#) [770444-1](#) [827153-1](#) [881735-1](#)  
[8N1515-32-24P](#) [9-1326729-8](#) [925467-1](#) [925474-1](#) [928905-1](#) [936398-2](#) [964562-4](#) [964731-2](#) [968782-1](#) [GT17SA-8DS-HU](#) [GT17VS-10DP-](#)  
[5.2CF](#) [98315-0001](#) [98315-0010](#) [98891-1012](#) [98895-2014](#) [98936-1039](#)