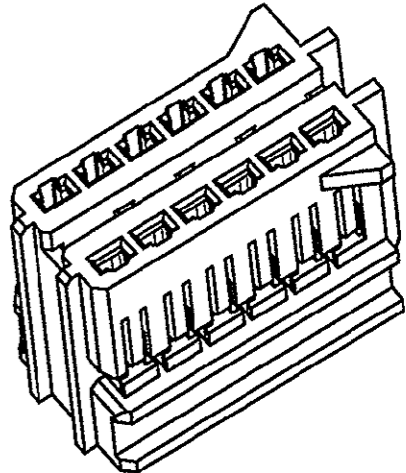
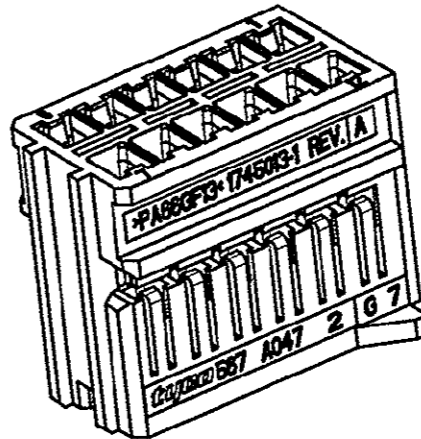
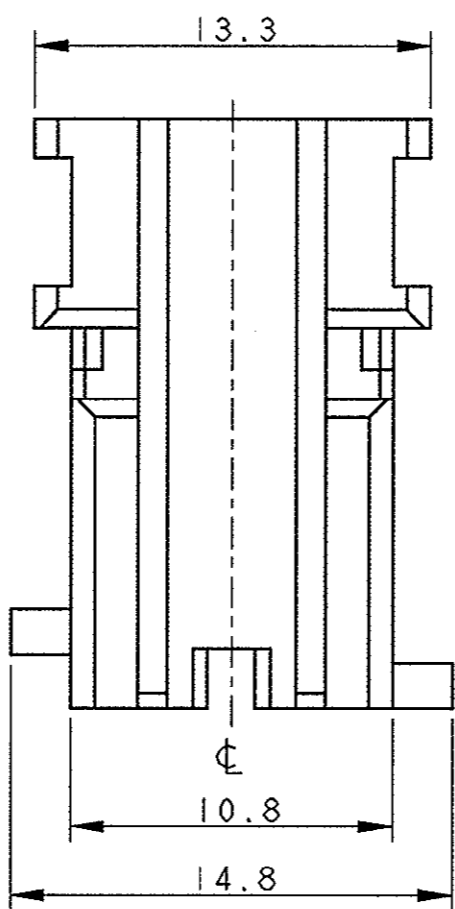
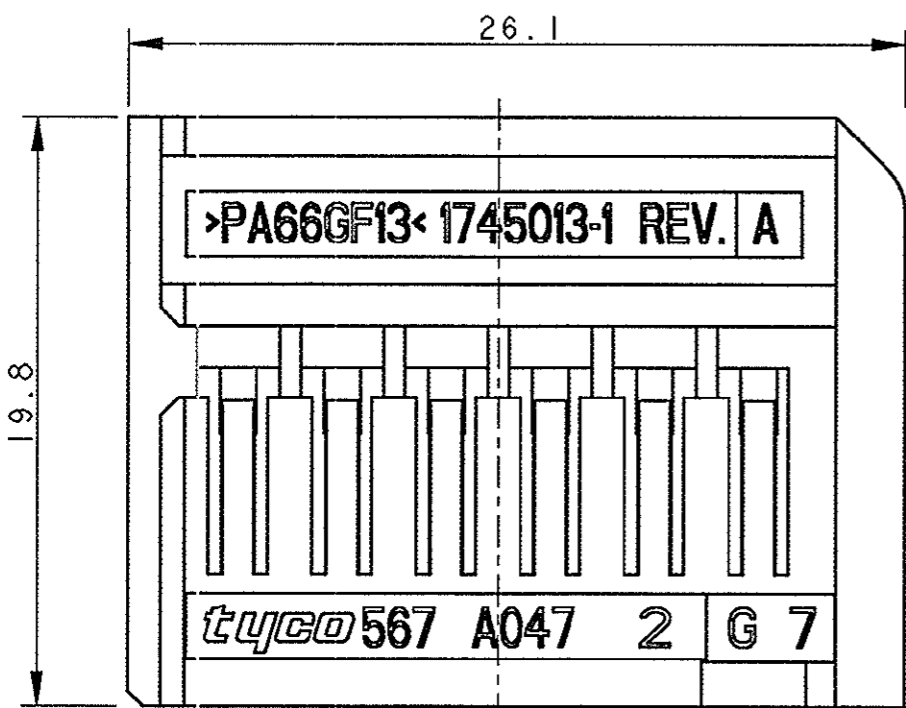


THIS DRAWING IS UNPUBLISHED. QUESTO DISEGNO NON DEVE ESSERE DIVULGATO O RIPRODOTTO
 RELEASED FOR PUBLICATION E' CONSENTITA LA DIVULGAZIONE
 2003
 ALL RIGHTS RESERVED. TUTTI I DIRITTI SONO RISERVATI
 BY TYCO ELECTRONICS CORPORATION.

LOC	DIST
1	

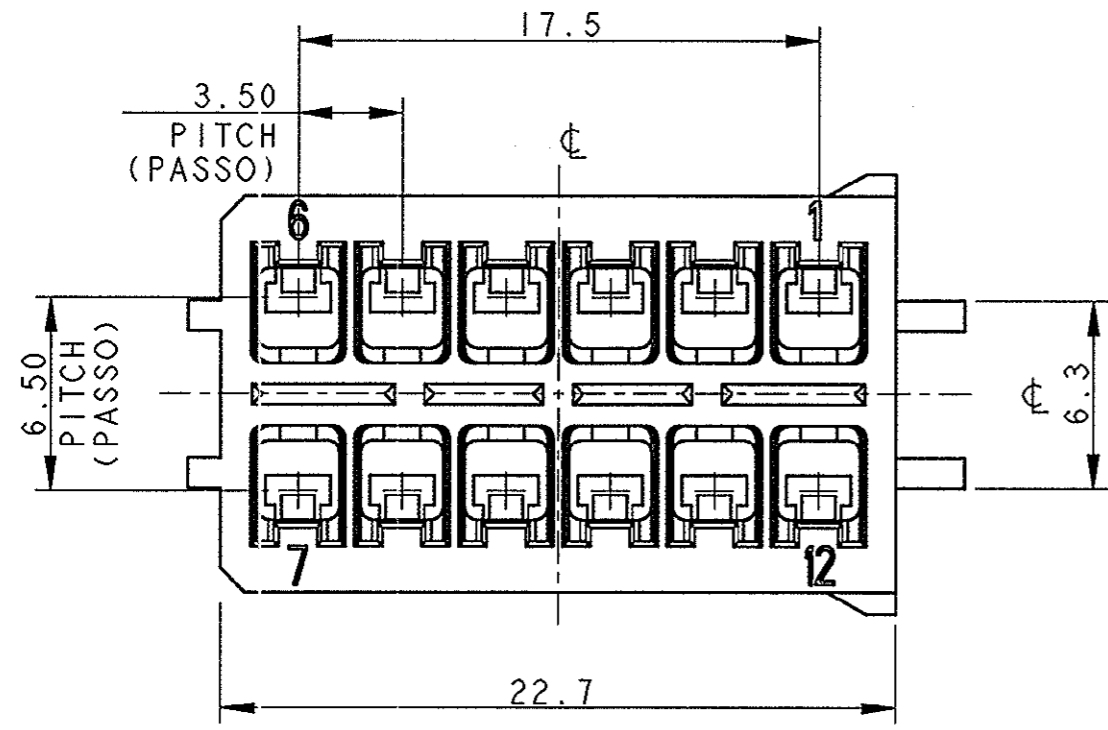
REVISIONS REVISIONI					
P	LTR REV	DESCRIPTION DESCRIZIONE	DATE DATA	DWN DIS.	APVD APP.
0		PRELIMINARY ISSUE (EMISSIONE PRELIMINARE)	04APR2003	M.S.	O.C.
1		WAS 03-51080-1	18DEC2003	M.S.	O.C.
A		FIRST ISSUE (ET00-0022-04)	16FEB2004	A.B.	O.C.
AI		RELEASED (ET00-0245-04)	03DEC2004	A.B.	O.C.



1) HOUSING MATERIAL: PA66 GF COLOUR BLACK (MATERIALE BLOCCETTO: PA66 CARICATO VETRO COLORE NERO)

2) CAVITIES SUITABLE FOR RECEPTACLE MULTILOCK 070 NEW GENERATION:
 P/N 284087-1 WIRE RANGE 0.35±0.5mm²
 P/N 284088-1 WIRE RANGE 0.75±1.5mm²
 (CAVITA' ADATTE PER CONTATTO FEMMINA MULTILOCK 070 NEW GENERATION:
 P/N 284087-1 SEZ. FILO 0.35±0.5mm²
 P/N 284088-1 SEZ. FILO 0.75±1.5mm²)

3) 12 POS. RECEPTACLE HOUSING 070 NEW GENERATION SUITABLE FOR P/N 1745014 (12 POS. RECEPTACLE HOUSING 070 NEW GENERATION ADEGUATO PER P/N 1745014)



P/N 1745013-1 AS SHOWN (COME MOSTRATO)

THIS DRAWING IS A CONTROLLED DOCUMENT FOR TYCO ELECTRONICS CORPORATION IT IS SUBJECT TO CHANGE AND THE CONTROLLING ENGINEERING ORGANIZATION SHOULD BE CONTACTED FOR THE LATEST REVISION. QUESTO DISEGNO E' UN DOCUMENTO DI PROPRIETA' E RESPONSABILITA' DELL'AMP INCORPORATED. E' SOGGETTO A VARIAZIONI. PER OTTENERE L'ULTIMA REVISIONE DEL DISEGNO CONTATTARE L'UFFICIO TECNICO RESPONSABILE.		DWN/DIS. 04APR2003 M. SARDI CHK/CONT. 04APR2003 O. CANUTO APVD/APP. 04APR2003 A. GENTA		tyco Electronics Tyco Electronics AMP Italia C.so F.lli Cervi,15 Collegno (TO)	
DIMENSIONS: DIMENSIONI: mm 		TOLERANCES UNLESS OTHERWISE SPECIFIED: TOLLERANZE: SE NON DIVERSAMENTE SPECIFICATO 0 PLC/DEC ±0.5 1 PLC/DEC ±0.3 2 PLC/DEC ±0.1 3 PLC/DEC ± 4 PLC/DEC ± ANGLES/ANGOLI ±1°		NAME: 12 POS. HOUSING FOR 070 NEW GEN. MODEL: CONTACT PITCH 3.5 (CONNETTORE 12 VIE PER CONTATTI 070 PASSO 3.5)	
MATERIAL: MATERIALE 		FINISH: FINITURA 		PRODUCT SPEC: 108-20251 APPLICATION SPEC: 411-20076 SIZE: A3 CAGE CODE: 00779 DRAWING NO: C-1745013 RESTRICTED TO:	
CUSTOMER DRAWING		DISEGNO PER CLIENTE SOLO PER RIFERIMENTO		SCALE: 4:1 SHEET: 1 OF 1 REV: A1	

X-ON Electronics

Largest Supplier of Electrical and Electronic Components

Click to view similar products for [Automotive Connectors](#) category:

Click to view products by [TE Connectivity](#) manufacturer:

Other Similar products are found below :

[003-018-000](#) [60993906-B](#) [M902-2131](#) [M902-2161](#) [M902-2344](#) [72.330.1035.1](#) [73.353.4028.0](#) [F166900](#) [F358300-B](#) [F407400](#) [776880-1](#)
[827153-1](#) [8N1515-32-24P](#) [9-1326729-8](#) [925474-1](#) [928905-1](#) [964562-4](#) [968782-1](#) [98891-1012](#) [12004475-L](#) [12020308](#) [12041318-B](#)
[12052466](#) [12064869](#) [12015909](#) [1-21030-1](#) [12041254](#) [12041318](#) [12047946-B](#) [12110546-B](#) [12131792](#) [12084688](#) [12092346](#) [HD34-18-14PT](#)
[HD46-24-23SN-059](#) [HDB36-24-16PN-059](#) [HDP26-24-9SE-L015](#) [12185280](#) [12185550](#) [12336-12](#) [12191172-B](#) [12S](#) [13545280](#) [13577943](#)
[13681974](#) [13737722-B](#) [13830674](#) [13832576](#) [13849772](#) [13542772](#)