

4

3

2

1

THIS DRAWING IS UNPUBLISHED.

RELEASED FOR PUBLICATION

--

LOC J

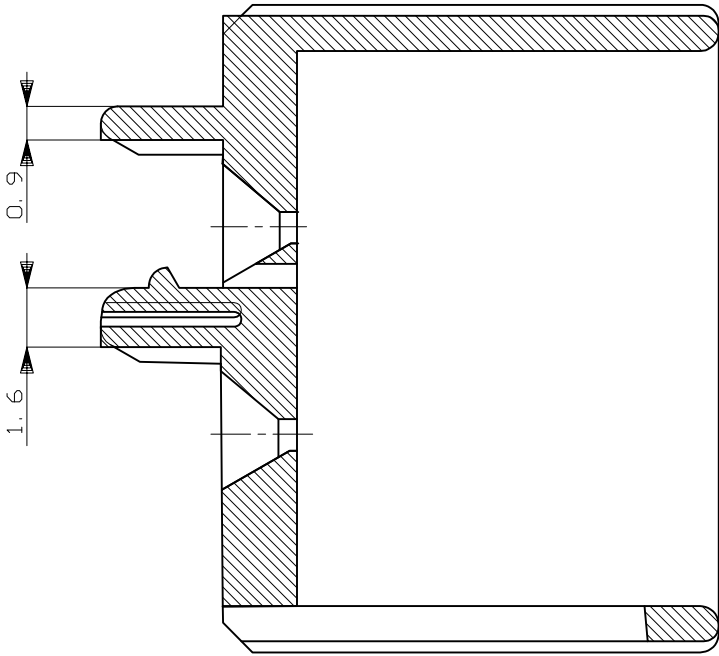
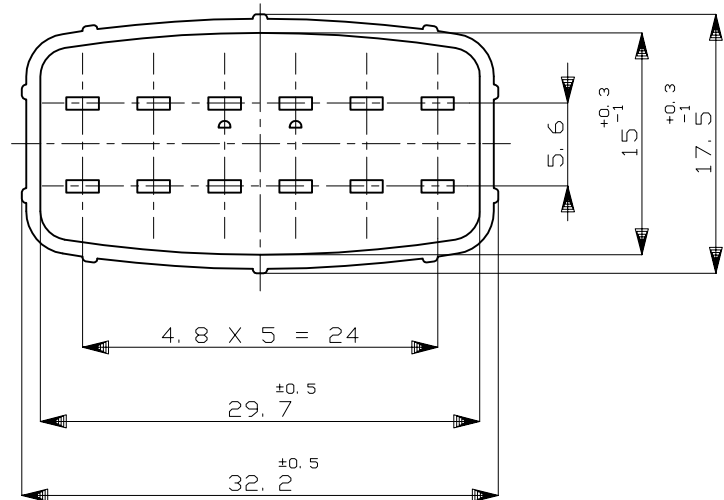
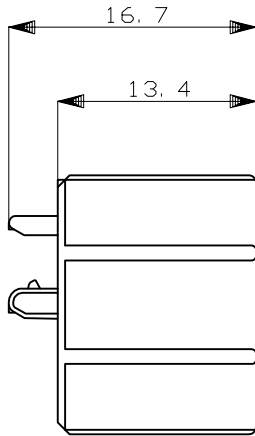
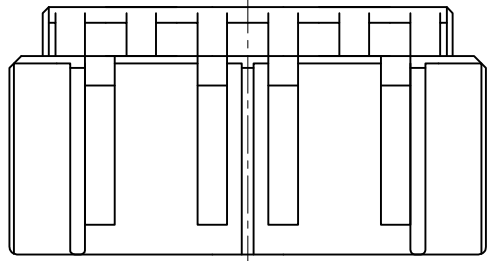
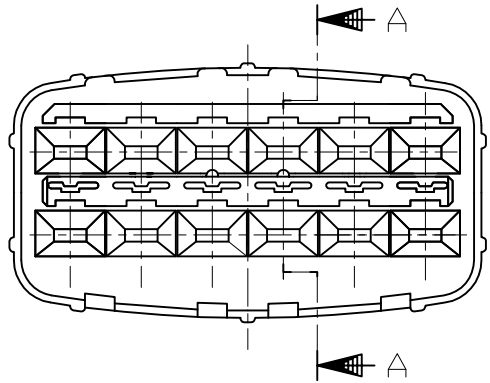
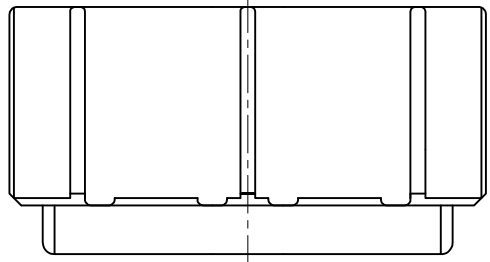
DIST -

REVISIONS

© COPYRIGHT - By -

ALL RIGHTS RESERVED.

| P | LTR | DESCRIPTION | DATE | DWN | APVD |
|---|-----|-------------|-----------|-----|------|
| | D1 | REVISED | 08JAN2014 | TS | KB |



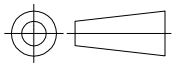
SECTION
断面 A-A
(尺度 5:1)

1. 本品は、キャップハウジング型番174663に装着される。
1. TO BE MATED WITH CAP HOUSING (PN 174663)

| | | |
|--|------------------|---------------------|
| HB | 自然色 (NATURAL) | 1-174664-1 |
| V-2 | 黄 (YELLOW) | 174664-7 |
| 使用材料難燃グレード (FLAMMABILITY OF MATERIAL) | 色 (COLOR) | 型番 (PART NUMBER) |

THIS DRAWING IS A CONTROLLED DOCUMENT.

DIMENSIONS: mm



TOLERANCES UNLESS OTHERWISE SPECIFIED:

| | |
|--------|---|
| 0 PLC | ± |
| 1 PLC | - |
| 2 PLC | ± |
| 3 PLC | ± |
| 4 PLC | ± |
| ANGLES | ± |

MATERIAL PBT

FINISH -

GENERAL TOLERANCE

| | |
|--------------|---------|
| 0 < * ≤ 10 | : ±0.2 |
| 10 < * ≤ 30 | : ±0.25 |
| 30 < * ≤ 100 | : ±0.3 |
| ANGLES | : ±3° |

| | | |
|------------------|-------------|---------|
| DWN | K.ODA | 5/26'87 |
| CHK | Y.MATSUSAKA | 5/28'87 |
| APVD | M.NOGUCHI | 5/29'87 |
| PRODUCT SPEC | 108-5262 | |
| APPLICATION SPEC | - | |
| WEIGHT | - | |
| CUSTOMER DRAWING | | |

| | | | |
|---|-----------|--------------|---------------|
| STE TE Connectivity | | | |
| NAME 12P. ECONOSEAL J-MARKII+ CONNECTOR DOUBLE LOCK PLATE FOR CAP HOUSING | | | |
| SIZE | CAGE CODE | DRAWING NO | RESTRICTED TO |
| A3 | 00779 | C=174664 | - |
| SCALE 2:1 | | SHEET 1 of 1 | REV D1 |

X-ON Electronics

Largest Supplier of Electrical and Electronic Components

Click to view similar products for [Automotive Connectors](#) category:

Click to view products by [TE Connectivity](#) manufacturer:

Other Similar products are found below :

[003-018-000](#) [60403001](#) [60993906-B](#) [M902-2131](#) [M902-2161](#) [M902-2344](#) [72.330.1035.1](#) [73.353.4028.0](#) [F119300-B](#) [F166900](#) [F258300-B](#)
[F358300-B](#) [F407400](#) [F444110](#) [F487000](#) [F509500B-B](#) [827153-1](#) [8N1515-32-24P](#) [9-1326729-8](#) [925474-1](#) [928905-1](#) [964562-4](#) [968782-1](#)
[GT17SA-8DS-HU](#) [98891-1012](#) [98947-1016](#) [12004147](#) [12004475-L](#) [12010290](#) [12010309-B](#) [12015454](#) [12020219-B](#) [12041318-B](#) [12052225-](#)
[L](#) [12052466](#) [12064869](#) [12004327-B](#) [12015308](#) [12015384](#) [12015909](#) [1-21030-1](#) [12041254](#) [12041318](#) [12047946-B](#) [12047957](#) [12047957-L](#)
[12059473](#) [12066261](#) [12110546](#) [12110546-B](#)