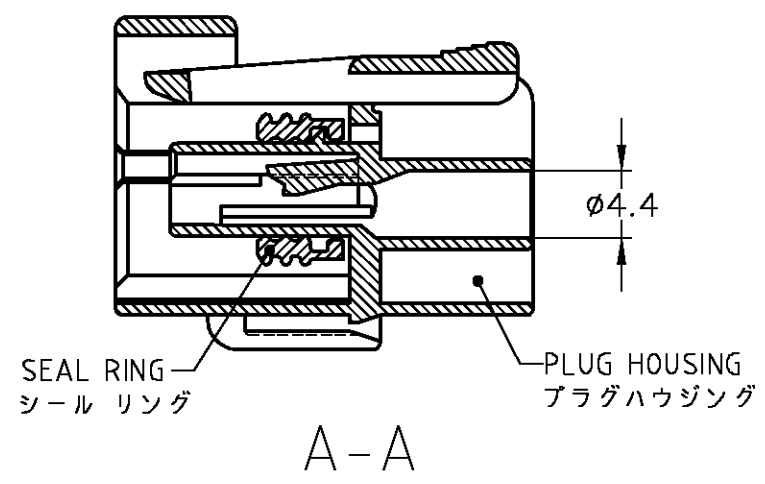
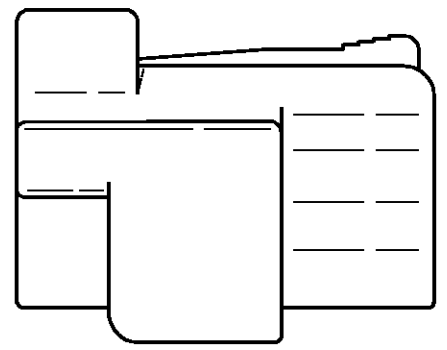
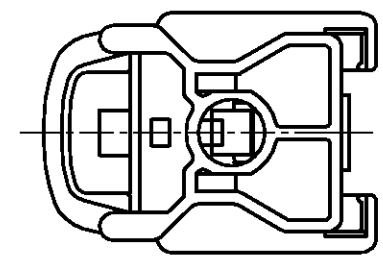
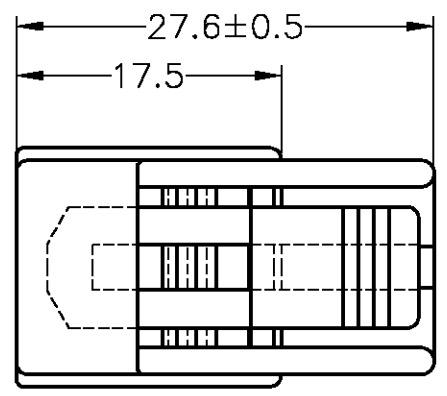
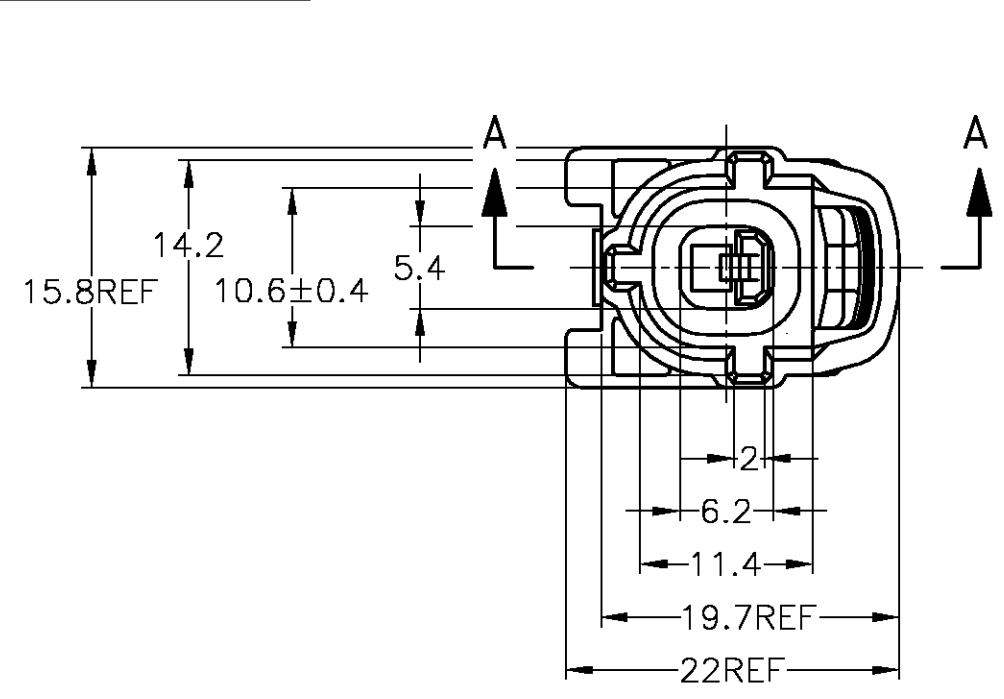


THIS DRAWING IS UNPUBLISHED. RELEASED FOR PUBLICATION  
 © COPYRIGHT BY TYCO ELECTRONICS CORPORATION. ALL RIGHTS RESERVED.

| LOC | DIST | REVISIONS |                  |              |         |     |      |
|-----|------|-----------|------------------|--------------|---------|-----|------|
|     |      | P         | LTR              | DESCRIPTION  | DATE    | DWN | APVD |
| J   | —    | A1        | REDRAWN W/CHANGE | FJA0-0052-04 | 09FEB04 | TS  | KB   |

TOLERANCE UNLESS OTHERWISE SPECIFIED:  
 一般公差  
 0 < x ≤ 10 : ±0.2  
 10 < x ≤ 30 : ±0.25  
 30 < x ≤ 100 : ±0.3  
 ANGLE : ±3°  
 角度



1. 嵌合相手型番 : 174879
  2. 本品はプラグハウジング単体にシールリングがアッセンブリされたものである。
  3. 本品はダブルロックプレート型番 174878を装着して使用する。
1. FOR CAP HOUSING PN 174879
  2. THIS PART IS COMPOSED OF PLUG HOUSING AND SEAL RING
  3. THIS PART MUST BE USED WITH DOUBLE LOCK PLATE PN 174878

|         |          |
|---------|----------|
| 灰 GRAY  | 174877-6 |
| 黒 BLACK | 174877-2 |
| 色 COLOR | 型番 PN    |

|   |           |  |  |  |
|---|-----------|--|--|--|
| THIS DRAWING IS A CONTROLLED DOCUMENT.      |           | DWN T.SHINOHARA 09FEB04                        | Tyco Electronics AMP K.K.<br>Kawasaki, Japan             |  |
| DIMENSIONS: 単位: 概 MM                        |           | CHK K.BETSUI 09FEB04                           | NAME 名称 1Pos. ECONOSEAL J-MARKII+ CONNECTOR PLUG HOUSING |  |
| TOLERANCES UNLESS OTHERWISE SPECIFIED: 一般公差 |           | APVD K.BETSUI 09FEB04                          | PRODUCT SPEC 製品規格 108-5262                               |  |
| 0 PLC ± -                                   |           | APPLICATION SPEC 取付適用規格 114-5082               |  |  |
| 1 PLC ± -                                   |           | WEIGHT 4.1g                                    |  |  |
| 2 PLC ± -                                   |           | SIZE A3 CAGE CODE 00779 DRAWING NO 番号 C-174877 |  |  |
| 3 PLC ± -                                   |           | RESTRICTED TO -                                |  |  |
| 4 PLC ± -                                   |           | SCALE 尺度 2:1 SHEET 1 OF 2 REV A1               |  |  |
| ANGLES ± -                                  |           | CUSTOMER DRAWING                               |  |  |
| MATERIAL 材料 PBT                             | FINISH 仕上 |  |  |  |

4

3

2

1

THIS DRAWING IS UNPUBLISHED.

RELEASED FOR PUBLICATION

© COPYRIGHT BY TYCO ELECTRONICS CORPORATION. ALL RIGHTS RESERVED.

| LOC | DIST | REVISIONS |     |             |      |     |      |
|-----|------|-----------|-----|-------------|------|-----|------|
|     |      | P         | LTR | DESCRIPTION | DATE | DWN | APVD |
| J   | —    | —         | —   | SEE 1 OF 2  | —    | —   | —    |

ブラケット推奨寸法図  
RECOMMENDED DIMENSION OF BRACKET

Technical drawing of a bracket showing dimensions and callouts. Dimensions include 13.0, 5.8±0.2, 6.7±0.1, 2.7±0.2, 8.9, 14.3, and R0.5±0.2. Callouts include 0.2x45+0.3/0 and R1.

Technical drawing of a bracket showing dimensions and callouts. Dimensions include R1.3.

Technical drawing of a bracket showing dimensions and callouts. Dimensions include 1.9+0.2/0, 0.4+0.2/-0.1, 0.3x45+0.2/-0.1, 1.5+0.3/0, 5.8MIN, 1.9+0.2/0, and R2.5REF. Callouts include R and PRESS.

 $t = 1.2 \pm 0.08$ 

Technical drawing of a bracket showing dimensions and callouts. Dimensions include 6 and R.

TOLERANCE UNLESS OTHERWISE SPECIFIED:  
一般公差

|              |         |
|--------------|---------|
| 0 < x ≤ 10   | : ±0.2  |
| 10 < x ≤ 30  | : ±0.25 |
| 30 < x ≤ 100 | : ±0.3  |
| ANGLE ; 角度   | : ±3°   |

|   |  |                               |   |                    |
|---|--|-------------------------------|---|--------------------|
| THIS DRAWING IS A CONTROLLED DOCUMENT.                          |  | DWN<br>T.SHINOHARA<br>09FEB04 | <b>tyco</b><br>Tyco Electronics AMP K.K.<br>Kawasaki, Japan       |                    |
| DIMENSIONS:<br>単位: 概<br>MM                                      |  | CHK<br>K.BETSUI<br>09FEB04    | NAME<br>名称<br>1Pos. ECONOSEAL J-MARKII+ CONNECTOR<br>PLUG HOUSING |                    |
| TOLERANCES UNLESS OTHERWISE SPECIFIED:<br>一般公差                  |  | APVD<br>K.BETSUI<br>09FEB04   | PRODUCT SPEC<br>製品規格  |                    |
| 0 PLC ±<br>1 PLC ±<br>2 PLC ±<br>3 PLC ±<br>4 PLC ±<br>ANGLES ± |  | APPLICATION SPEC<br>取付適用規格    | SIZE<br>A3  |                    |
| MATERIAL<br>材料  |  | FINISH<br>仕上                  | WEIGHT  | CAGE CODE<br>00779 |
|   |  | DRAWING NO<br>番号<br>C-174877  |   | RESTRICTED TO      |
|   |  | CUSTOMER DRAWING              |   | SCALE<br>尺度 4:1    |
|   |  | SHEET 2 OF 2                  |   | REV<br>A1          |

AMP 1470-19 REV 31MAR2000

09JAN2004 3:25pm FJ029188

S:\AMP-KawasakiEC\Automotive\en32\_automotive\u.a99-0187\ej-bracket\0052-04\c-174877-sh2.dwg

## X-ON Electronics

Largest Supplier of Electrical and Electronic Components

*Click to view similar products for [Automotive Connectors](#) category:*

*Click to view products by [TE Connectivity](#) manufacturer:*

Other Similar products are found below :

[003-018-000](#) [60993906-B](#) [72.330.1035.1](#) [F358300-B](#) [F407400](#) [776880-1](#) [827153-1](#) [8N1515-32-24P](#) [9-1326729-8](#) [925474-1](#) [928905-1](#)  
[964562-4](#) [968782-1](#) [98891-1012](#) [12004475-L](#) [12041318-B](#) [12052466](#) [12015909](#) [1-21030-1](#) [12041318](#) [12047957](#) [12185550](#) [12336-12](#)  
[12147304](#) [1-326211-1](#) [13681974](#) [13783086](#) [13832576](#) [13542772](#) [13675513](#) [1428188-1](#) [1437287-3](#) [1428188-2](#) [DS07-19S-5020](#) [1456983-5](#)  
[1456987-7](#) [APD-7CP-H](#) [APK-SB25A10L](#) [1452931-2](#) [15336198](#) [15491972](#) [15305306](#) [15396680](#) [15425613](#) [15518544](#) [15522351](#) [1719636-1](#)  
[172190-2](#) [172190-5](#) [192900-0402](#)