

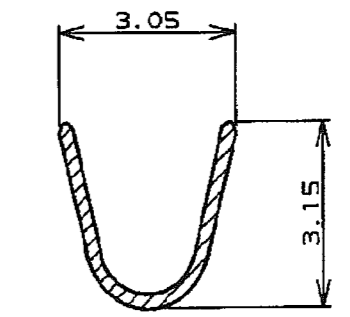
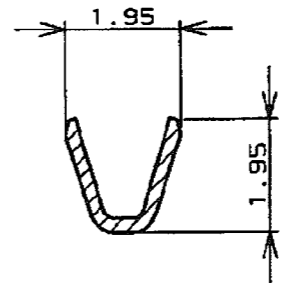
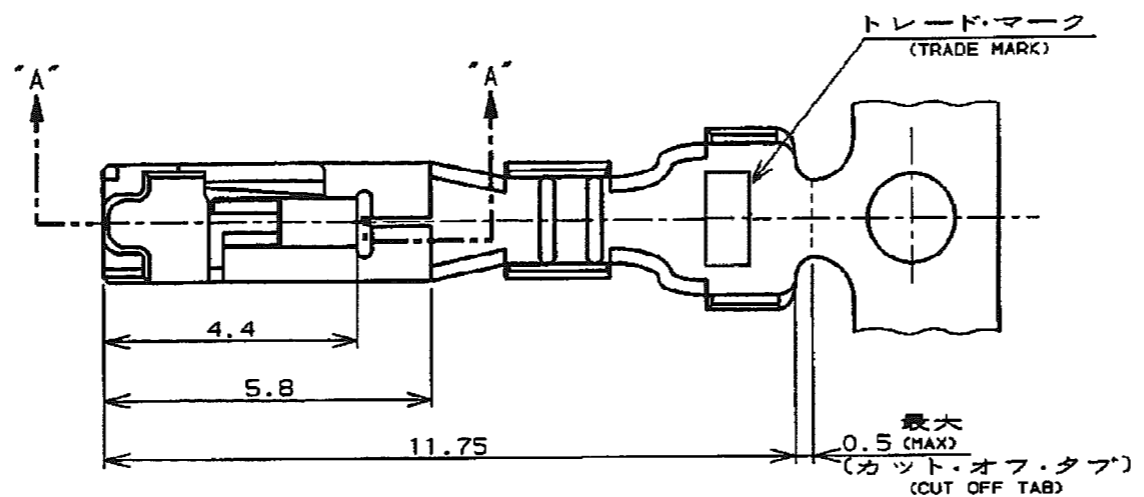
NUMBER C-175151

三 角 錐 (3rd ANGLE PROJECTION)

METRIC

単位: mm DIMENSIONS IN MM. DO NOT SCALE PRINT

PRINT DIST



断面 "D"- "D"  
(SECT)

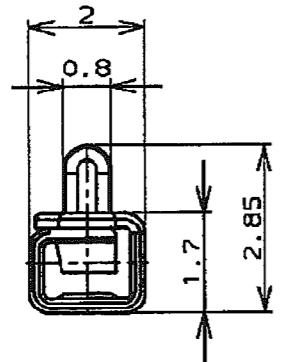
断面 "E"- "E"  
(SECT)

注記:

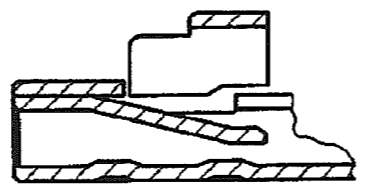
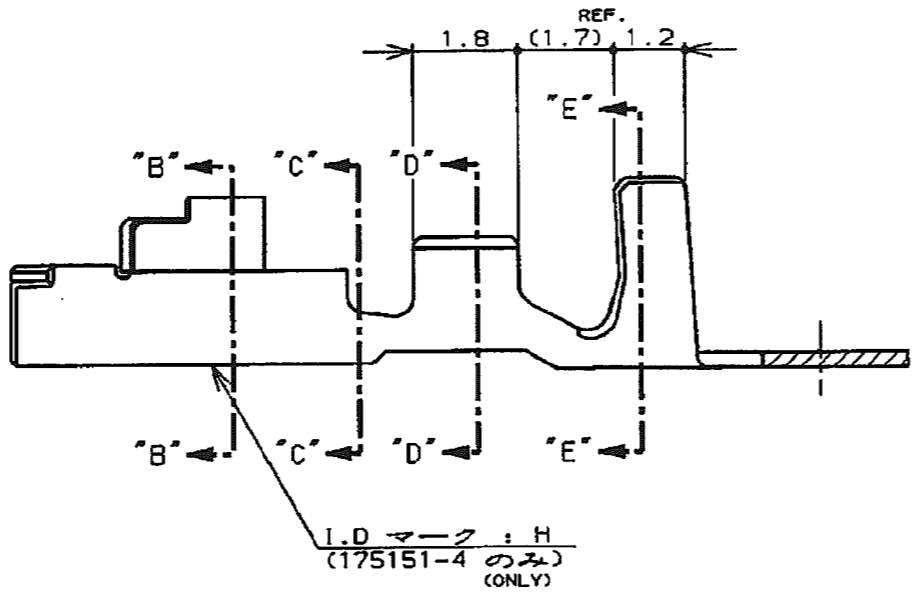
- 1. 適用規格
  - 製品規格 : 108-5302
  - 取付適用規格 : 114-5142
- 2. 取扱説明書 : IS-503J

NOTES:

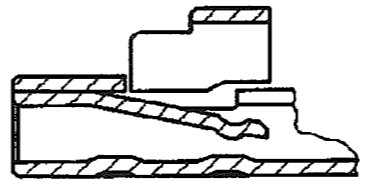
- 1. APPLICABLE SPEC
  - PRODUCT SPEC : 108-5302
  - APPLICATION SPEC : 114-5142
- 2. INSTRUTION SHEET : IS-503J



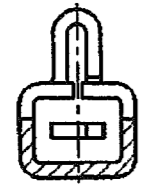
断面 "B"- "B"  
(SECT)



断面 "A"- "A"  
(SECT) (175151-1, -2)



断面 "A"- "A"  
(SECT) (175151-4)



断面 "C"- "C"  
(SECT)

|                      |  |                                       |             |
|----------------------|--|---------------------------------------|-------------|
|                      | NYE: 502H-20-UV<br>1L7"カトオ化処理<br>(APPLIED LUBRICANT OIL) | 錫めつき黄銅<br>(PRE TINNED BRASS)          | 175151-5    |
| 175155-4             | ---  | 錫めつき黄銅合金<br>(PRE TINNED COPPER ALLOY) | 175151-4    |
| 175155-2             | ---  | 錫めつき黄銅<br>(PRE TINNED BRASS)          | 175151-2    |
| 175155-1             | ---  | 錫めつき黄銅合金<br>(PRE TINNED COPPER ALLOY) | 175151-1    |
| パラ状端子型番<br>(L.P P/N) | 仕上<br>(FINISH)   | 材料<br>(MATERIAL)                      | 型番<br>(P/N) |

|  |                                     |   |                              |
|--|-------------------------------------|---|------------------------------|
|  |                                     | TE Connectivity   |                              |
| 適合電線断面積 (WIRE RANGE)<br>0.12~0.35mm <sup>2</sup> (AWG#26~22) | 被覆外径 (INSULATION DIA.)<br>1.2~2 mmφ | 名称 (NAME)<br>リセパクル・コンタクト, アンパ・ユニバーサル・パワー・コネクタ<br>(REC CONTACT AMP UNIVERSAL POWER CONN.)  |                              |
| 材料 (MATERIAL)<br>表参照<br>(SEE TABLE)                          | 仕上 (FINISH)<br>表参照<br>(SEE TABLE)   | 一般公差<br>(GENERAL TOLERANCE)<br>10以下: ±0.2<br>10~30以下: ±0.25<br>30~100以下: ±0.3<br>角 度: ±3° | LOC 番号 (No.)<br>B J C-175151 |
| F1 REVISED PER ECO-11-005030                                 | RK HMR 01APR11                      | DR. 8. JUN '95 N. NAGASHIMA   | DE. 8. JUN '95 M. SHINDO     |
| LTR 変更 (REVISION RECORD)                                     | DR CHK DATE                         | CHK. 8. JUN '95 M. SHINDO   | APP. 8. JUN '95 Y. KASHIWA   |
|  |                                     | 尺度 (SCALE)  | REV. F1 SHEET 1 OF 1         |

|     |                           |    |     |         |
|-----|---------------------------|----|-----|---------|
| F1  | REVISED PER ECO-11-005030 | RK | HMR | 01APR11 |
| LTR | 変更 (REVISION RECORD)      | DR | CHK | DATE    |

## X-ON Electronics

Largest Supplier of Electrical and Electronic Components

*Click to view similar products for [Power to the Board](#) category:*

*Click to view products by [TE Connectivity](#) manufacturer:*

Other Similar products are found below :

[6450171-4](#) [6450552-7](#) [6600323-8](#) [6643429-1](#) [6646040-2](#) [6651939-1](#) [6766604-1](#) [120959-1](#) [1393557-2](#) [1393532-2](#) [1393532-3](#) [1393532-4](#)  
[1393557-1](#) [1600812-5](#) [1-6450861-2](#) [1744132-7](#) [1761122-1](#) [1766250-1](#) [1892109-1](#) [2-6450860-5](#) [2-6450870-0](#) [1-6450161-4](#) [1-6450850-6](#) [1-](#)  
[6450869-6](#) [1645526-2](#) [1-6600130-0](#) [2005243-2](#) [377-0020-11130](#) [TE34-12-16P-F0](#) [51700-10201602AALF](#) [5-6450830-6](#) [5646956-4](#) [377-](#)  
[0080-11131A](#) [4-6450830-9](#) [4-6600333-3](#) [10125416-4050LF](#) [10130248-005LF](#) [6600320-3](#) [3-6450860-5](#) [1888123-2](#) [6450166-1](#) [6643978-1](#)  
[6766605-1](#) [701-15-02109](#) [N11444](#) [6651938-1](#) [6450810-7](#) [46437-1112](#) [1-1589677-8](#) [5646956-5](#)