

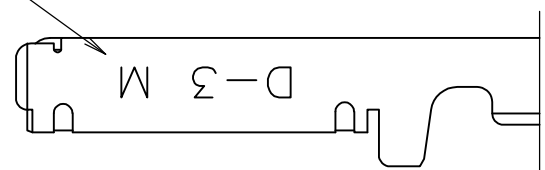
LOC J DIST /

REVISIONS

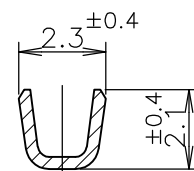
変更

| P | LTR | DESCRIPTION | DATE | DWN | APVD |
|---|-----|---------------------------|-----------|-----|------|
| | D | REVISED PER ECR-15-011723 | 08AUG2015 | Y.O | E.T |

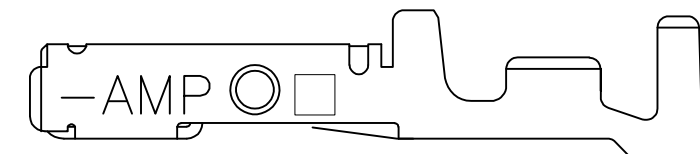
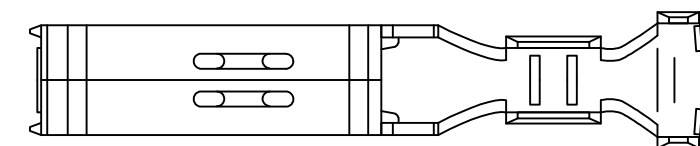
ワイヤーレンジ
WIRE RANGE
ID MARK



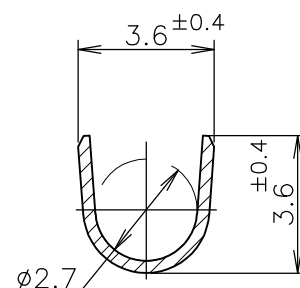
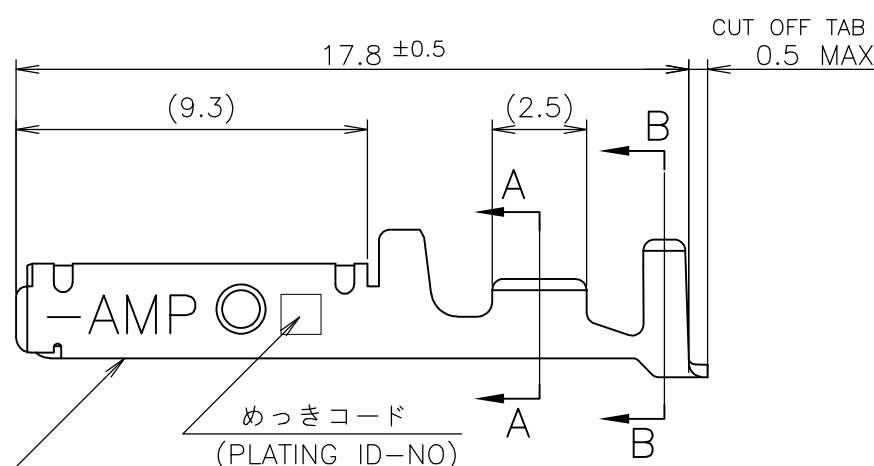
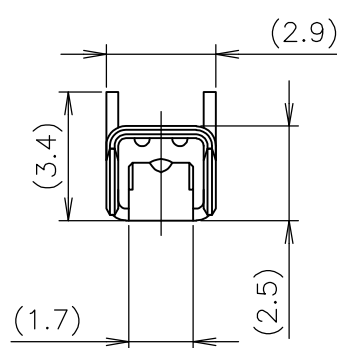
TOOLING ID MARK
ON OUTER SURFACE



A-A



2-5 ONLY



B-B

- ① 標準接圧型コンタクト：一般向け及び多極用
- ② 高接圧型コンタクト：高電流用及び強振動用
- ③ 金めっきは接続部のみとする
- 4 製品規格：108-5349
- 5 取付け適用規格：114-5148

| 備考 (REMARK) | 接圧表示 (ID-MARK) | めっきコード (PL. ID NO) | 仕上 (FINISH) | 型番 (P/N) |
|-------------|----------------|--------------------|------------------------------------|-------------|
| OBSOLETE | H | 5 | 光沢錫めっき (BRIGHT TIN-PL.) | 2-175217-5- |
| | | 5 | 光沢錫めっき (BRIGHT TIN-PL.) | 1-175217-5 |
| | | 3 | 0.76μm 最小金めっき (0.76μm MIN. Au-PL.) | 1-175217-3 |
| | INACTIVE | 2 | 0.38μm 最小金めっき (0.38μm MIN. Au-PL.) | 1-175217-2 |
| | | 5 | 光沢錫めっき (BRIGHT TIN-PL.) | 175217-5 |
| | | 2 | 0.38μm 最小金めっき (0.38μm MIN. Au-PL.) | 175217-2 |

- ① CONTACT TYPE; LOW PRESSURE TYPE (FOR GENERAL)
- ② CONTACT TYPE; HIGH PRESSURE TYPE (FOR HIGH CURRENT OR ANTI-VIBRATION)
- ③ GOLD-PL. CONTACT AREA ONLY
- 4 PRODUCT SPEC: 108-5349
- 5 APPLICATION SPEC: 114-5148

GENERAL TOLERANCE
一般公差

| | |
|-------------|-------|
| 10 ≥ : | ±0.2 |
| 30 ≥ > 10: | ±0.25 |
| 100 ≥ > 30: | ±0.3 |
| ANGLES: | ±3° |

THIS DRAWING IS A CONTROLLED DOCUMENT.

| | |
|---|---|
| DIMENSIONS: 単位: 耗 mm | TOLERANCES UNLESS OTHERWISE SPECIFIED: 一般公差 |
| | 0 PLC ± - |
| | 1 PLC ± - |
| | 2 PLC ± - |
| | 3 PLC ± - |
| | 4 PLC ± - |
| | ANGLES ± - |
| MATERIAL 材料 (COPPER ALLOY) 銅合金 | FINISH 仕上 (SEE TABLE) 表参照 |

| | | |
|------------------|---------------|-----------|
| DWN | T-YONEBAYASHI | 27JUN1990 |
| CHK | H.OBATA | 14FEB1991 |
| APVD | S.MANABE | 14FEB1991 |
| PRODUCT SPEC | 製品規格 | |
| APPLICATION SPEC | 取付適用規格 | |
| WEIGHT | | |

| | | | |
|---|---------------------------------------|---|----------|
| WIRE RANGE 包合電線断面積 AWG 24-20 (0.2-0.5mmSQ) mm ² | INSULATION DIA 被覆外径 1.2-2.6 mmφ | TE Connectivity M SIZE DYNAMIC SERIES REC. CONTACT L/P ダイナミックシリーズリセプタクルコンタクト L/P | |
| SIZE | CAGE CODE | | |
| CUSTOMER DRAWING | | A3 00779 | C-175217 |
| SCALE 尺度 | 5:1 | SHEET 1 OF 1 | REV D |

X-ON Electronics

Largest Supplier of Electrical and Electronic Components

Click to view similar products for [Headers & Wire Housings](#) category:

Click to view products by [TE Connectivity](#) manufacturer:

Other Similar products are found below :

[892-18-020-10-001101](#) [58102-G61-06LF](#) [582553-1](#) [0009485154](#) [009176003701906](#) [0050291907](#) [LY20-4P-DT1-P1E-BR](#) [02.125.8002.8](#)
[609-3404](#) [61062-3](#) [61082-181009](#) [622-3653LF](#) [63453-116](#) [636-1030](#) [636-1427](#) [636-3427](#) [636-4007](#) [641938-9](#) [641991-4](#) [644827-2](#) [65817-](#)
[010LF](#) [65817-015LF](#) [65863-015LF](#) [66207-023LF](#) [67095-007LF](#) [67601157](#) [68645-018](#) [68648-049](#) [70.362.1628.0](#) [70-4210](#) [70-4226B](#) [70-](#)
[4853B](#) [707-5020](#) [707-5028](#) [71.350.2428.0](#) [71918-208LF](#) [71961-016LF](#) [733-134](#) [733-162](#) [754199-000](#) [760-3052](#) [79531-3000](#) [FCN-](#)
[360C032-B](#) [FCN-367T-T012/H](#) [FCN-723D010/2](#) [80.063.4001.1](#) [800-90-010-10-002000](#) [801-43-002-10-013000](#) [801-43-006-10-002000](#)
[801-93-011-10-001000](#)