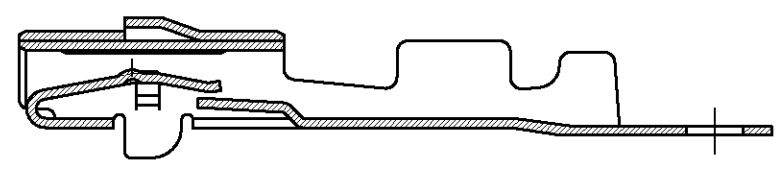
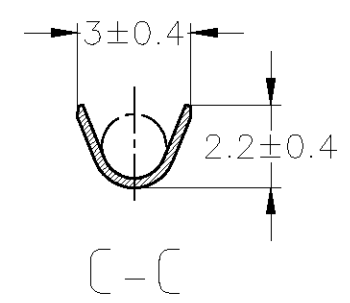
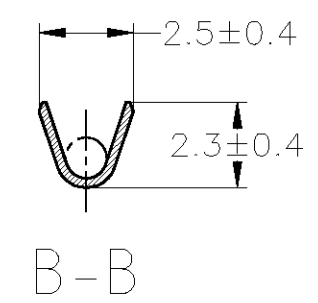
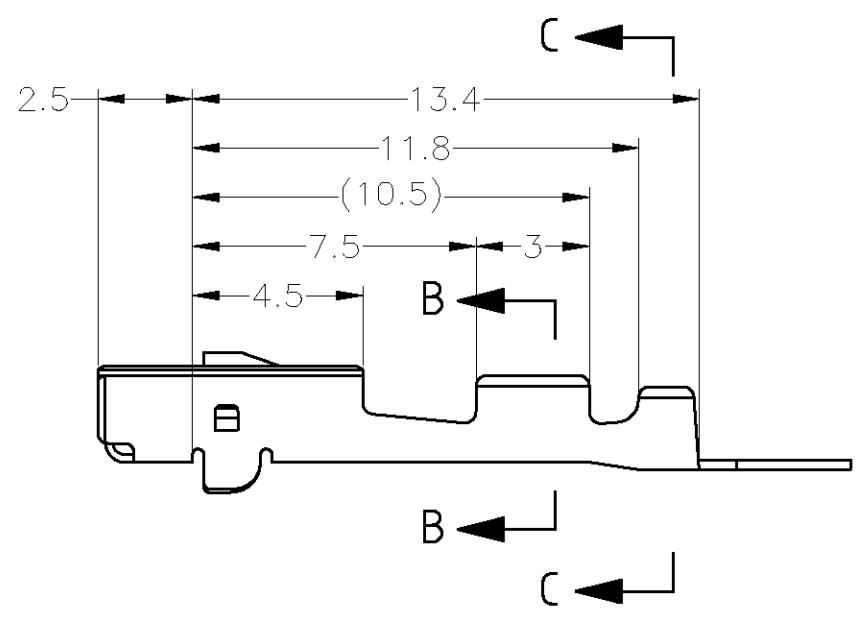
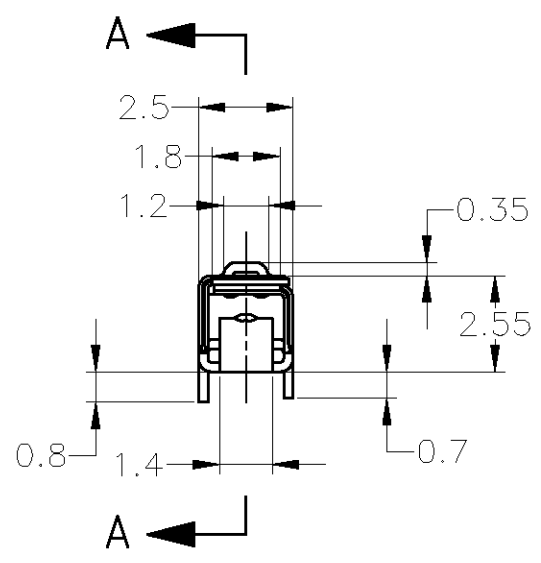
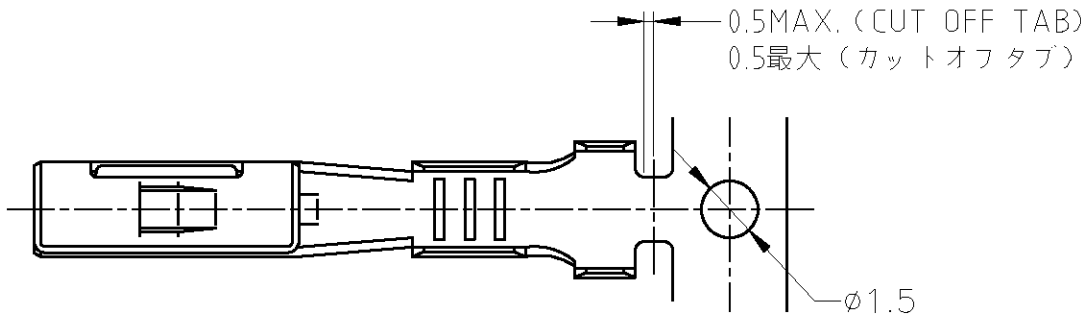


THIS DRAWING IS UNPUBLISHED. RELEASED FOR PUBLICATION  
 © COPYRIGHT - By Tyco Electronics JAPAN G.K. ALL RIGHTS RESERVED.

LOC	DIST	REVISIONS			
P	LTR	DESCRIPTION	DATE	DWN	APVD
J	-	G	REVISED	ECR-13-011414	05JUL2012 TS KB



A-A

OBSOLETE	ZKLF-5	-	PRE-TIN	175268-5
	BRASS	179423-1	PRE-TIN	175268-1
	MATERIAL	LOOSE PIECE CONTACT PN	FINISH	PART NUMBER

1. APPLICATION SPEC NO. 114-5160

1. 取付適用規格番号 114-5160

THIS DRAWING IS A CONTROLLED DOCUMENT.		DWN T.SHINOHARA 05JUL2012	<b>STE</b> TE Connectivity													
DIMENSIONS: mm		CHK K.BETSUI 05JUL2012														
TOLERANCES UNLESS OTHERWISE SPECIFIED:		APVD K.BETSUI 05JUL2012	NAME													
<table border="1"> <tr><td>0 PLC</td><td>± -</td></tr> <tr><td>1 PLC</td><td>± -</td></tr> <tr><td>2 PLC</td><td>± -</td></tr> <tr><td>3 PLC</td><td>± -</td></tr> <tr><td>4 PLC</td><td>± -</td></tr> <tr><td>ANGLES</td><td>± -</td></tr> </table>		0 PLC	± -	1 PLC	± -	2 PLC	± -	3 PLC	± -	4 PLC	± -	ANGLES	± -	PRODUCT SPEC	070II SERIES S RECEPTACLE CONTACT	
0 PLC	± -															
1 PLC	± -															
2 PLC	± -															
3 PLC	± -															
4 PLC	± -															
ANGLES	± -															
MATERIAL SEE TABLE		FINISH SEE TABLE	APPLICATION SPEC SEE NOTE	RESTRICTED TO												
TOLERANCES UNLESS OTHERWISE SPECIFIED: 一般公差		WEIGHT 0.32 g	SIZE A3	CAGE CODE 00779												
<table border="1"> <tr><td>10 ≥</td><td>: ±0.2</td></tr> <tr><td>30 ≥ &gt; 10</td><td>: ±0.25</td></tr> <tr><td>100 ≥ &gt; 30</td><td>: ±0.3</td></tr> <tr><td colspan="2">ANGLE : ±3°</td></tr> </table>		10 ≥	: ±0.2	30 ≥ > 10	: ±0.25	100 ≥ > 30	: ±0.3	ANGLE : ±3°		DRAWING NO C-175268		SCALE 5:1				
10 ≥	: ±0.2															
30 ≥ > 10	: ±0.25															
100 ≥ > 30	: ±0.3															
ANGLE : ±3°																
		CUSTOMER DRAWING		SHEET 1 OF 1												
				REV G												

包含電線断面積 (WIRE RANGE) 0.37~0.88 mm <sup>2</sup> (AWG#22-#18)	被覆外径 (INSULATION DIA.) 1.1~2.1 mmφ
---	---------------------------------------

## X-ON Electronics

Largest Supplier of Electrical and Electronic Components

*Click to view similar products for [Automotive Connectors](#) category:*

*Click to view products by [TE Connectivity](#) manufacturer:*

Other Similar products are found below :

[003-018-000](#) [60403001](#) [60993906-B](#) [M902-2131](#) [M902-2161](#) [M902-2344](#) [72.330.1035.1](#) [73.353.4028.0](#) [F119300-B](#) [F166900](#) [F258300-B](#)  
[F358300-B](#) [F407400](#) [F444110](#) [F487000](#) [F509500B-B](#) [827153-1](#) [8N1515-32-24P](#) [9-1326729-8](#) [925474-1](#) [928905-1](#) [964562-4](#) [968782-1](#)  
[GT17SA-8DS-HU](#) [98891-1012](#) [98947-1016](#) [12004147](#) [12004475-L](#) [12010290](#) [12010309-B](#) [12015454](#) [12020219-B](#) [12041318-B](#) [12052225-](#)  
[L](#) [12052466](#) [12064869](#) [12004327-B](#) [12015308](#) [12015384](#) [12015909](#) [1-21030-1](#) [12041254](#) [12041318](#) [12047946-B](#) [12047957](#) [12047957-L](#)  
[12059473](#) [12066261](#) [12110546](#) [12110546-B](#)