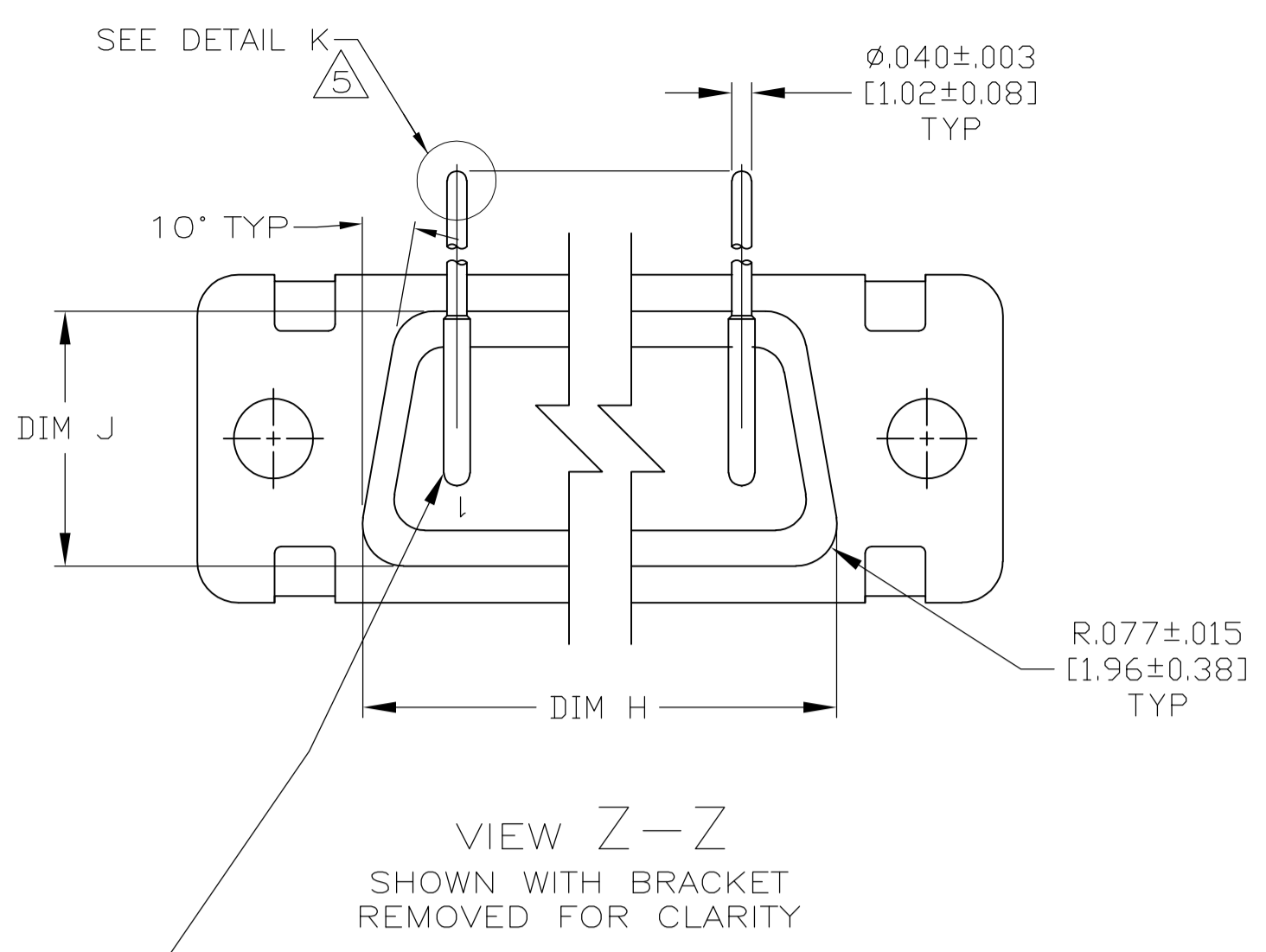
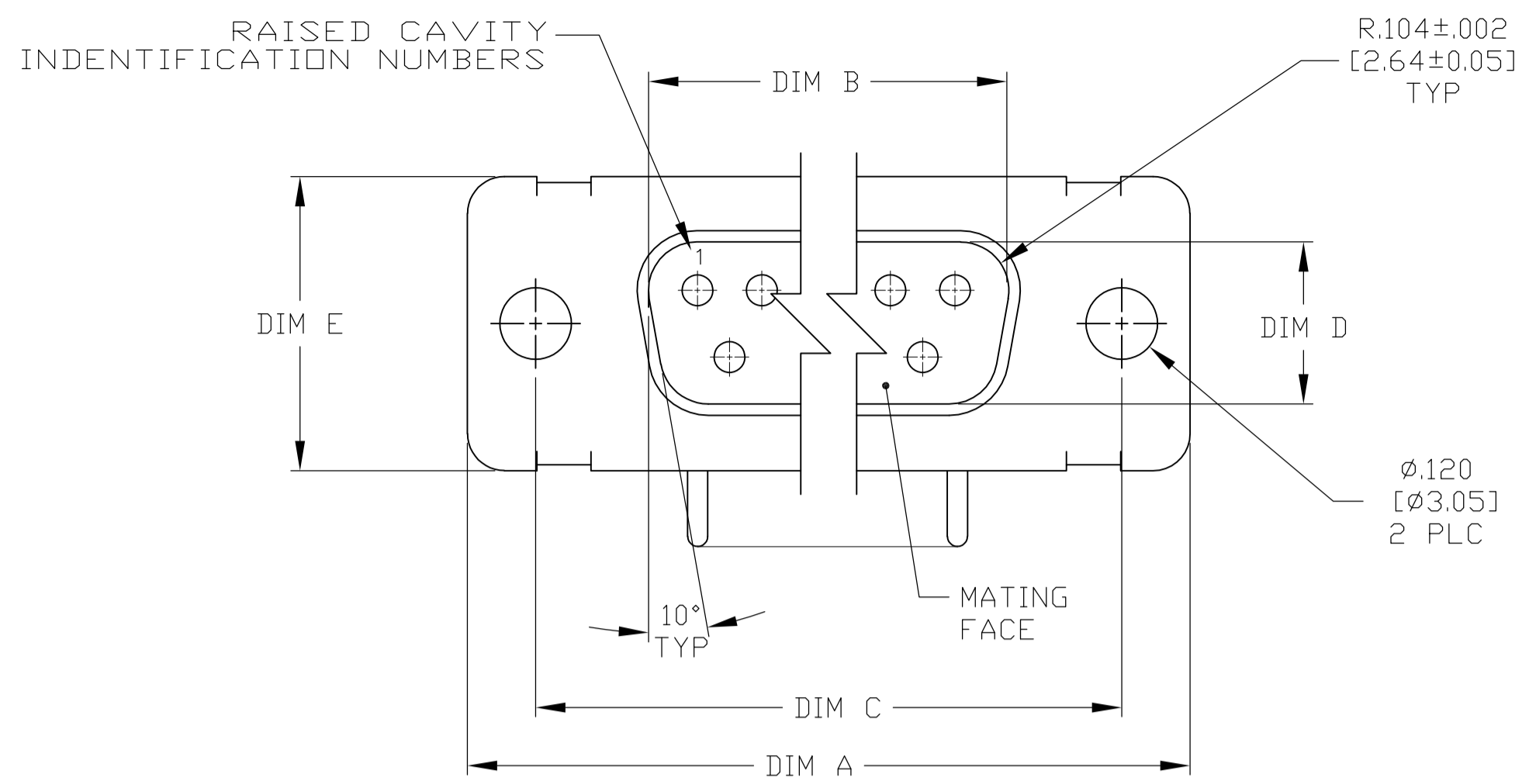


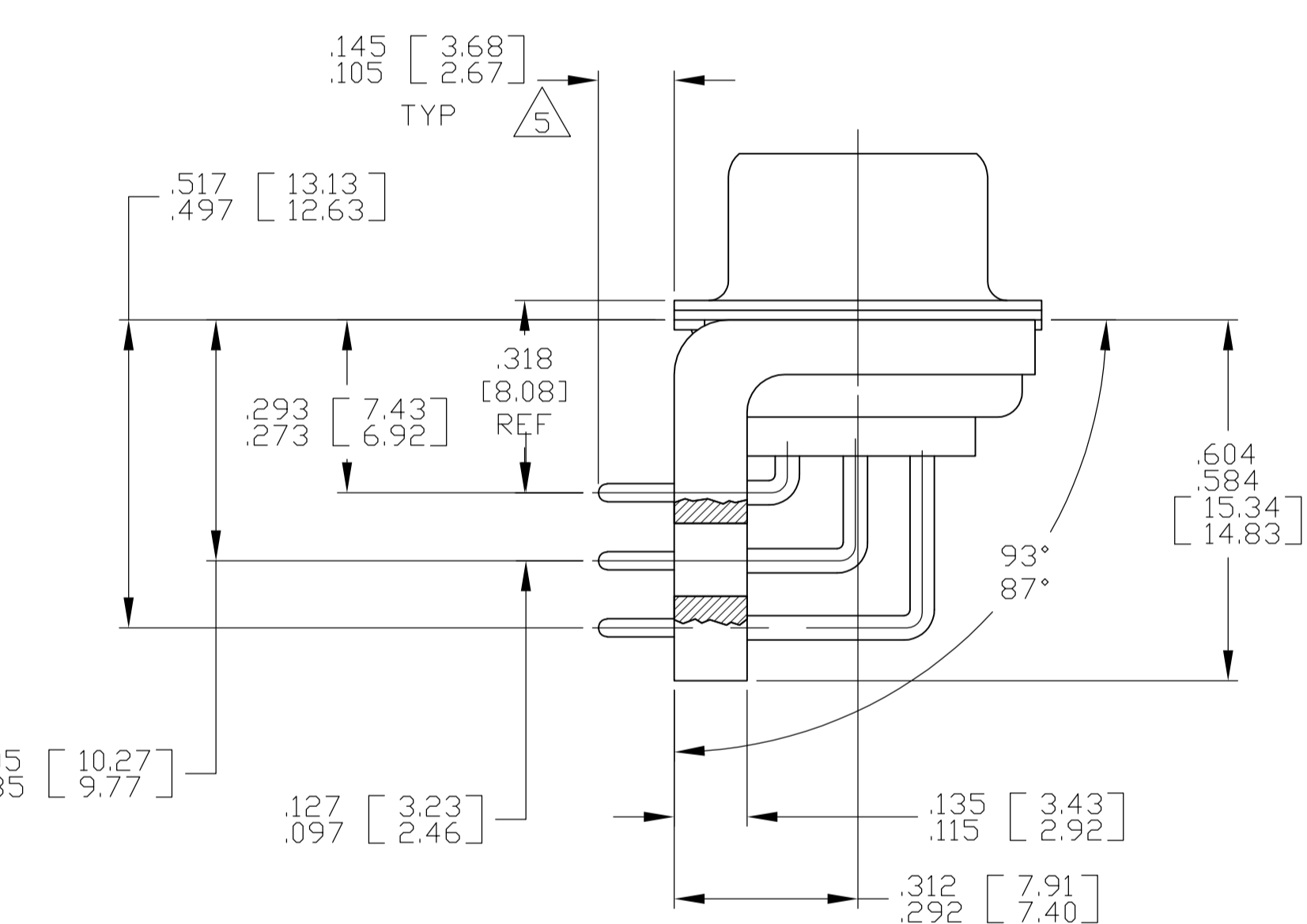
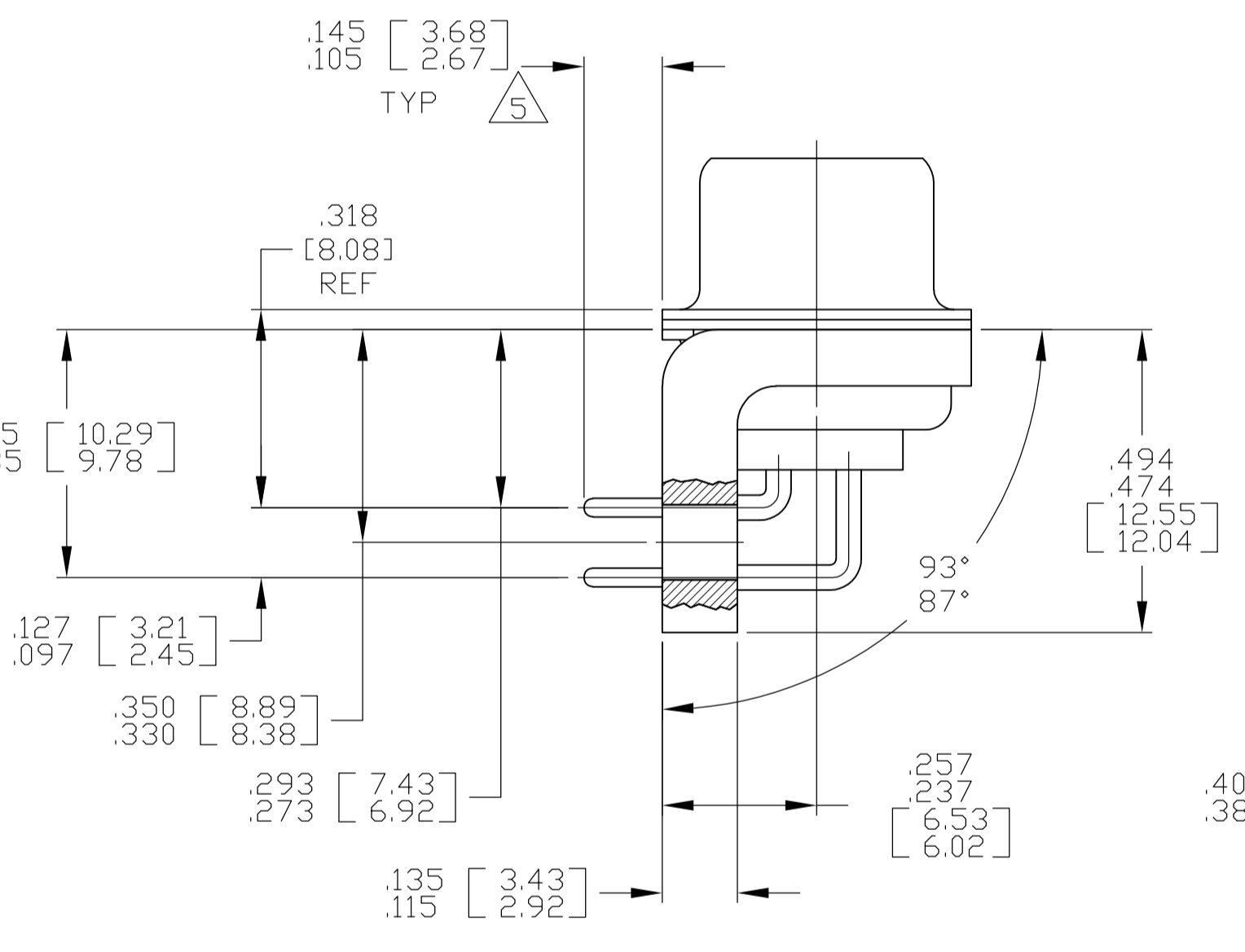
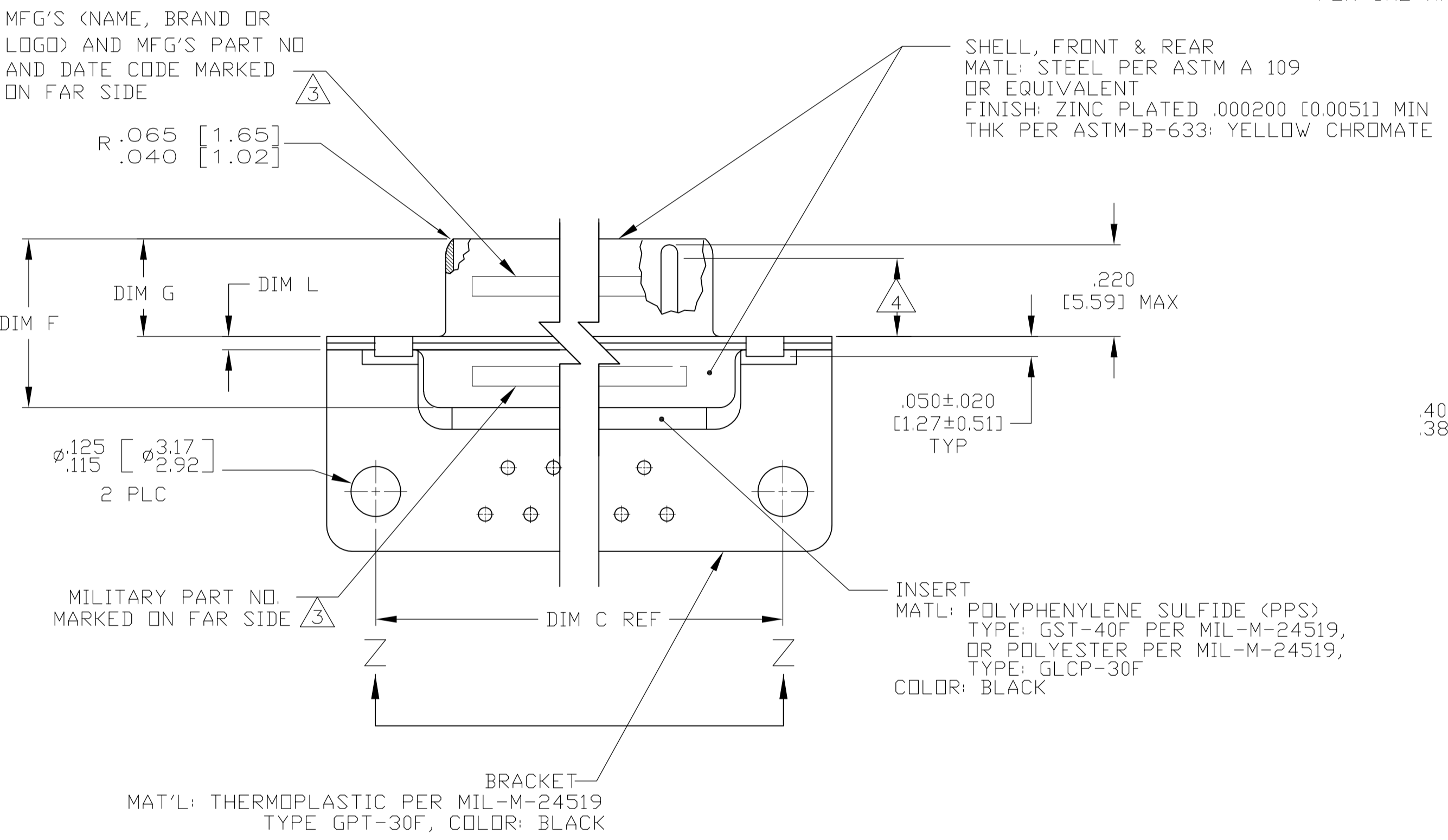
LOC	DIST	REV	DESCRIPTION	DATE	BY	APPV
DF	AO	B	REVISED PER ECO-13-002047	05FEB2013	MGM	CT



VIEW Z-Z
SHOWN WITH BRACKET REMOVED FOR CLARITY

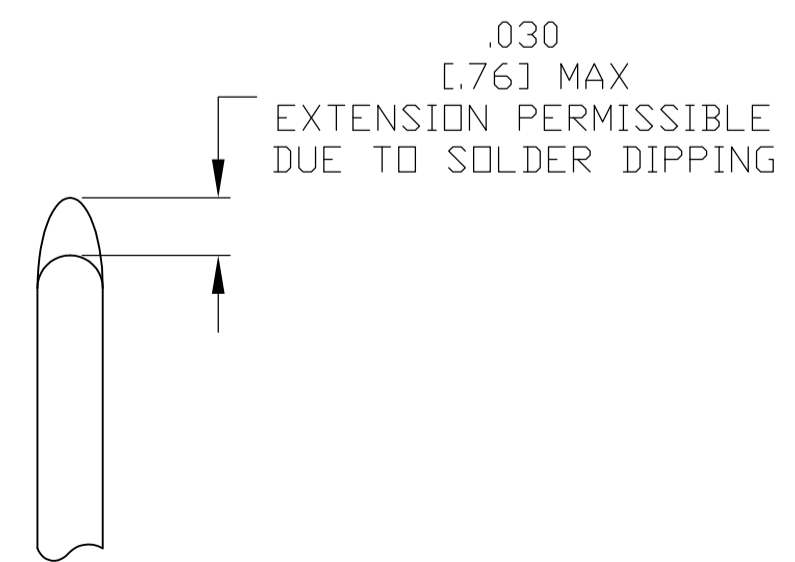
CONTACT (QTY = NO. OF POSN)
MATL: BRASS PER ASTM-B-16, OR BERYLLIUM COPPER PER ASTM-B-194
FINISH: GOLD PER ASTM-B-488, TYPE II, GRADE C, CLASS 1.27 IN CONTACT MATING AREA, .000010 [0.0003] MIN THK GOLD PER ASTM-B-488 OVER .000050 [0.0013] MIN THK NICKEL PER SAE-AMS-QQ-N-290 ON CONTACT BODY

1. SEE SHEET 2 FOR RECOMMENDED P.C. BOARD LAYOUT. TRUE POSITION TOLERANCE FOR P.C. BOARD LAYOUT IS .010 [0.25] AT MAX MATERIAL CONDITION. SUGGESTED BOARD THICKNESS IS .062 [1.57]
2. THE CONNECTORS DESCRIBED IN THIS DOCUMENT MEET THE REQUIREMENTS OF MIL-C-24308 AND MATE WITH ANY RECEPTACLE CONNECTOR WITH SAME INSERT ARRANGEMENT.
3. MARKED WITH .047 [1.19]-.062 [1.57] HIGH CHARACTERS. FAR SIDE REFERS TO THE WIDE SIDE OF THE KEYSTONE. NEAR SIDE REFERS TO THE NARROW SIDE OF THE KEYSTONE. IF THE SHELL IS TOO SMALL FOR THE ENTIRE MARKING, MARKING SHALL BE SPLIT AS FOLLOWS:
 - A. *M24308* ON FRONT SHELL, FAR SIDE.
 - B. SLASH SHEET AND DASH NUMBER ON REAR SHELL, FAR SIDE.
 - C. *MFG'S* (NAME, BRAND OR LOGO) AND DATE CODE ON FRONT SHELL, NEAR SIDE.
 - D. MFG'S PART NUMBER ON REAR SHELL, NEAR SIDE.
4. REQUIREMENT FOR FULL PIN DIAMETER EXTENSION:
 - .159 [4.04] MIN, SHELL SIZES 1 AND 2.
 - .150 [3.81] MIN, SHELL SIZES 3 AND 4.
5. SOLDER DIPPED PER J-STD-001 WITH Sn63 SOLDER PER J-STD-006 IN THE ENTIRE AREA OF DIMENSION SHOWN. (1757841-6 THRU -10 ONLY.)
6. MEETS SOLDERABILITY PER MIL-STD-202 METHOD 208.



SHELL SIZES 1 THRU 4 CONTACT CONFIGURATION

SHELL SIZE 5 CONTACT CONFIGURATION



.049 [1.24] .544 [13.82] 2.188 [55.58] .236 [5.99] .436 [11.07] .620 [15.75] .446 [11.33] 2.411 [61.24] 2.084 [52.55] 2.650 [67.31]	.029 [0.74] .524 [13.31] 2.168 [55.07] .224 [5.69] .416 [10.57] .590 [14.99] .436 [11.07] 2.401 [60.99] 2.074 [52.30] 2.620 [66.55]	.049 [1.24] .432 [10.97] 2.282 [57.96] .236 [5.99] .436 [11.07] .509 [12.93] .334 [8.48] 2.505 [63.63] 2.187 [54.97] 2.744 [69.70]	.029 [0.74] .412 [10.46] 2.262 [57.45] .224 [5.69] .416 [10.57] .479 [12.17] .324 [8.23] 2.495 [63.37] 2.177 [54.71] 2.714 [68.94]	.049 [1.24] .432 [10.97] 1.635 [41.53] .236 [5.99] .436 [11.07] .509 [12.93] .334 [8.48] 1.857 [47.17] 1.539 [38.51] 2.103 [53.42]	.029 [0.74] .412 [10.46] 1.615 [41.02] .224 [5.69] .416 [10.57] .479 [12.17] .324 [8.23] 1.847 [46.91] 1.529 [38.25] 2.073 [52.65]	.040 [1.02] .432 [10.97] 1.093 [27.76] .238 [6.05] .432 [10.97] .509 [12.93] .334 [8.48] 1.317 [33.45] .999 [24.79] 1.556 [39.52]	.020 [0.51] .412 [10.46] 1.073 [27.25] .229 [5.82] .412 [10.46] .479 [12.17] .324 [8.23] 1.307 [33.20] .989 [24.54] 1.526 [38.76]	.040 [1.02] .432 [10.97] .769 [19.53] .238 [6.05] .432 [10.97] .509 [12.93] .334 [8.48] .989 [25.12] .671 [16.46] 1.228 [31.19]	.020 [0.51] .412 [10.46] .749 [19.02] .229 [5.82] .412 [10.46] .479 [12.17] .324 [8.23] .979 [24.87] .661 [16.21] 1.198 [30.43]	.049 [1.24] .544 [13.82] 2.188 [55.58] .236 [5.99] .436 [11.07] .620 [15.75] .446 [11.33] 2.411 [61.24] 2.084 [52.55] 2.650 [67.31]	.029 [0.74] .524 [13.31] 2.168 [55.07] .224 [5.69] .416 [10.57] .590 [14.99] .436 [11.07] 2.401 [60.99] 2.074 [52.30] 2.620 [66.55]	.049 [1.24] .432 [10.97] 2.282 [57.96] .236 [5.99] .436 [11.07] .509 [12.93] .334 [8.48] 2.505 [63.63] 2.187 [54.97] 2.744 [69.70]	.029 [0.74] .412 [10.46] 2.262 [57.45] .224 [5.69] .416 [10.57] .479 [12.17] .324 [8.23] 2.495 [63.37] 2.177 [54.71] 2.714 [68.94]	.049 [1.24] .432 [10.97] 1.635 [41.53] .236 [5.99] .436 [11.07] .509 [12.93] .334 [8.48] 1.857 [47.17] 1.539 [38.51] 2.103 [53.42]	.029 [0.74] .412 [10.46] 1.615 [41.02] .224 [5.69] .416 [10.57] .479 [12.17] .324 [8.23] 1.847 [46.91] 1.529 [38.25] 2.073 [52.65]	.040 [1.02] .432 [10.97] 1.093 [27.76] .238 [6.05] .432 [10.97] .509 [12.93] .334 [8.48] 1.317 [33.45] .999 [24.79] 1.556 [39.52]	.020 [0.51] .412 [10.46] 1.073 [27.25] .229 [5.82] .412 [10.46] .479 [12.17] .324 [8.23] 1.307 [33.20] .989 [24.54] 1.526 [38.76]	.040 [1.02] .432 [10.97] .769 [19.53] .238 [6.05] .432 [10.97] .509 [12.93] .334 [8.48] .989 [25.12] .671 [16.46] 1.228 [31.19]	.020 [0.51] .412 [10.46] .749 [19.02] .229 [5.82] .412 [10.46] .479 [12.17] .324 [8.23] .979 [24.87] .661 [16.21] 1.198 [30.43]
---	---	--	--	--	--	---	---	---	---	---	---	--	--	--	--	---	---	---	---

DIM L	DIM J	DIM H	DIM G	DIM F	DIM E	DIM D	DIM C	DIM B	DIM A	INSERT ARRANGEMENT	NO OF POS	SHELL SIZE	MILITARY P/N ON CONNECTOR	MFG'S P/N MARKED ON CONNECTOR	MFG'S PART NO.
.049	.544	2.188	.236	.436	.620	.446	2.411	2.084	2.650	MS18277-1	50	5	M24308/24-41Z	1757841-5	1-1757841-0
.029	.524	2.168	.224	.416	.590	.436	2.401	2.074	2.620	MS18276-1	37	4	M24308/24-40Z	1757841-4	1757841-9
.049	.432	2.282	.236	.436	.509	.334	2.505	2.187	2.744	MS18275-1	25	3	M24308/24-39Z	1757841-3	1757841-8
.029	.412	2.262	.224	.416	.479	.324	2.495	2.177	2.714	MS18274-1	15	2	M24308/24-38Z	1757841-2	1757841-7
.040	.432	1.093	.238	.432	.509	.334	1.317	.999	1.556	MS18273-1	9	1	M24308/24-37Z	1757841-1	1757841-6
.020	.412	1.073	.229	.412	.479	.324	1.307	.989	1.526	MS18277-1	50	5	M24308/24-41Z	1757841-5	1757841-5
.049	.432	2.282	.236	.436	.509	.334	2.505	2.187	2.744	MS18276-1	37	4	M24308/24-40Z	1757841-4	1757841-4
.029	.412	2.262	.224	.416	.479	.324	2.495	2.177	2.714	MS18275-1	25	3	M24308/24-39Z	1757841-3	1757841-3
.049	.432	1.635	.236	.436	.509	.334	1.857	1.539	2.103	MS18274-1	15	2	M24308/24-38Z	1757841-2	1757841-2
.029	.412	1.615	.224	.416	.479	.324	1.847	1.529	2.073	MS18273-1	9	1	M24308/24-37Z	1757841-1	1757841-1

DETAIL K
SCALE 10:1
FOR 1757841-6 THRU -10 ONLY

THIS DRAWING IS A CONTROLLED DOCUMENT.

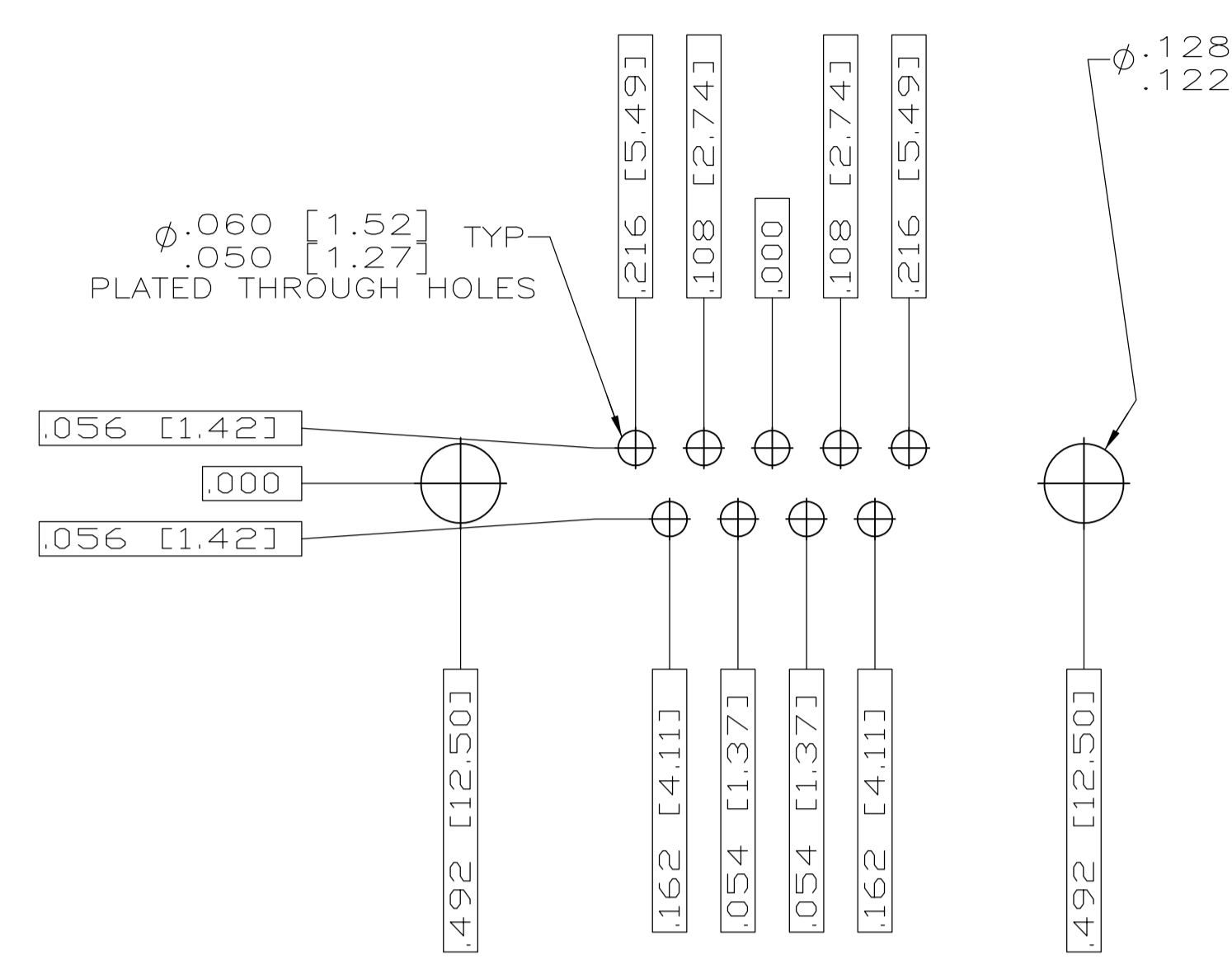
DMN: C.C. THOMAS 10FEB2008
CHK: D. MILLER 2-13-06
APPV: D. MILLER 2-13-06

TE Connectivity

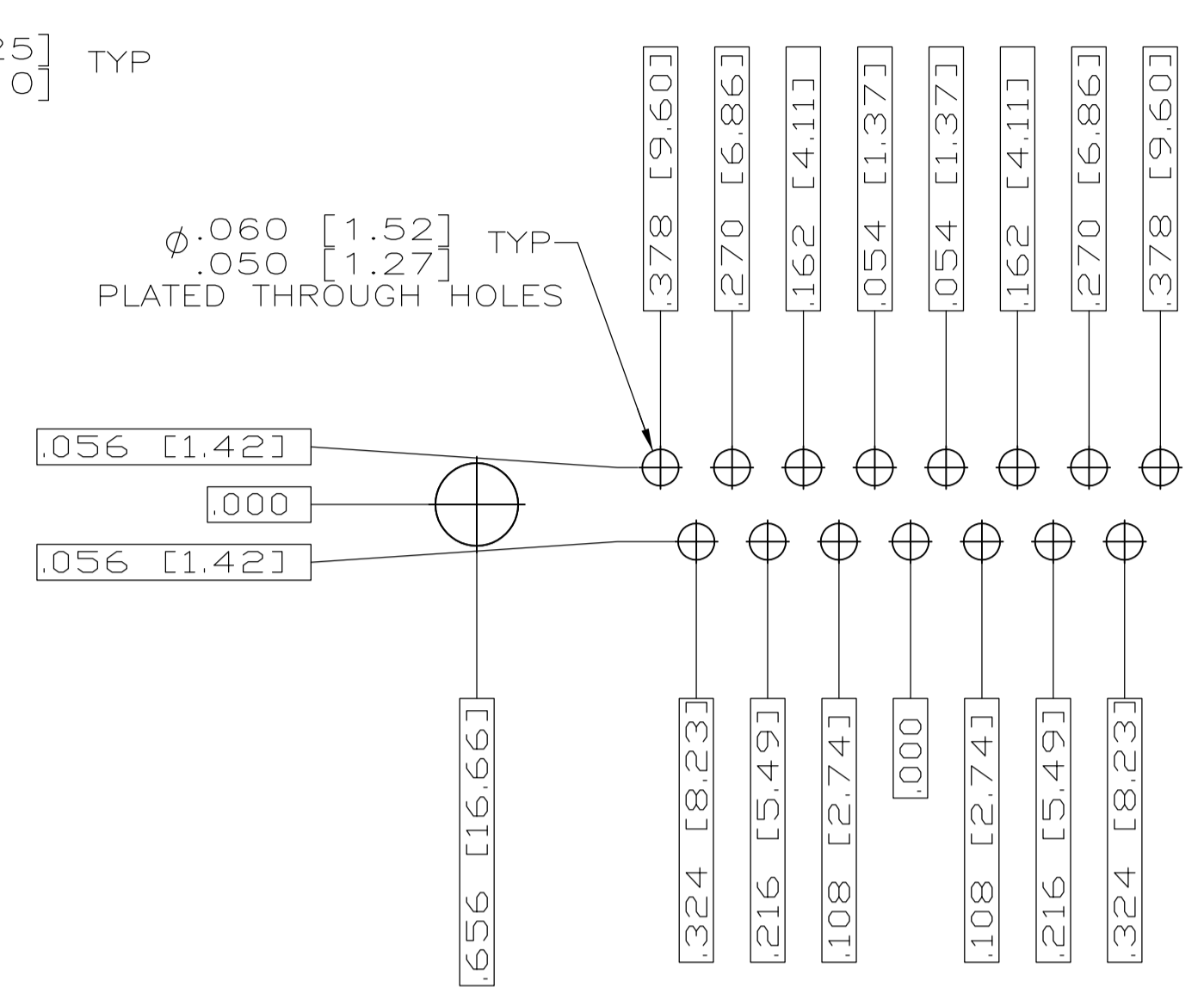
PLUG ASSEMBLY, AMP/LMITE, RT ANGLE, SERIES 109, SIZE 1 THRU 5

APPLIC. SPEC: 1757841

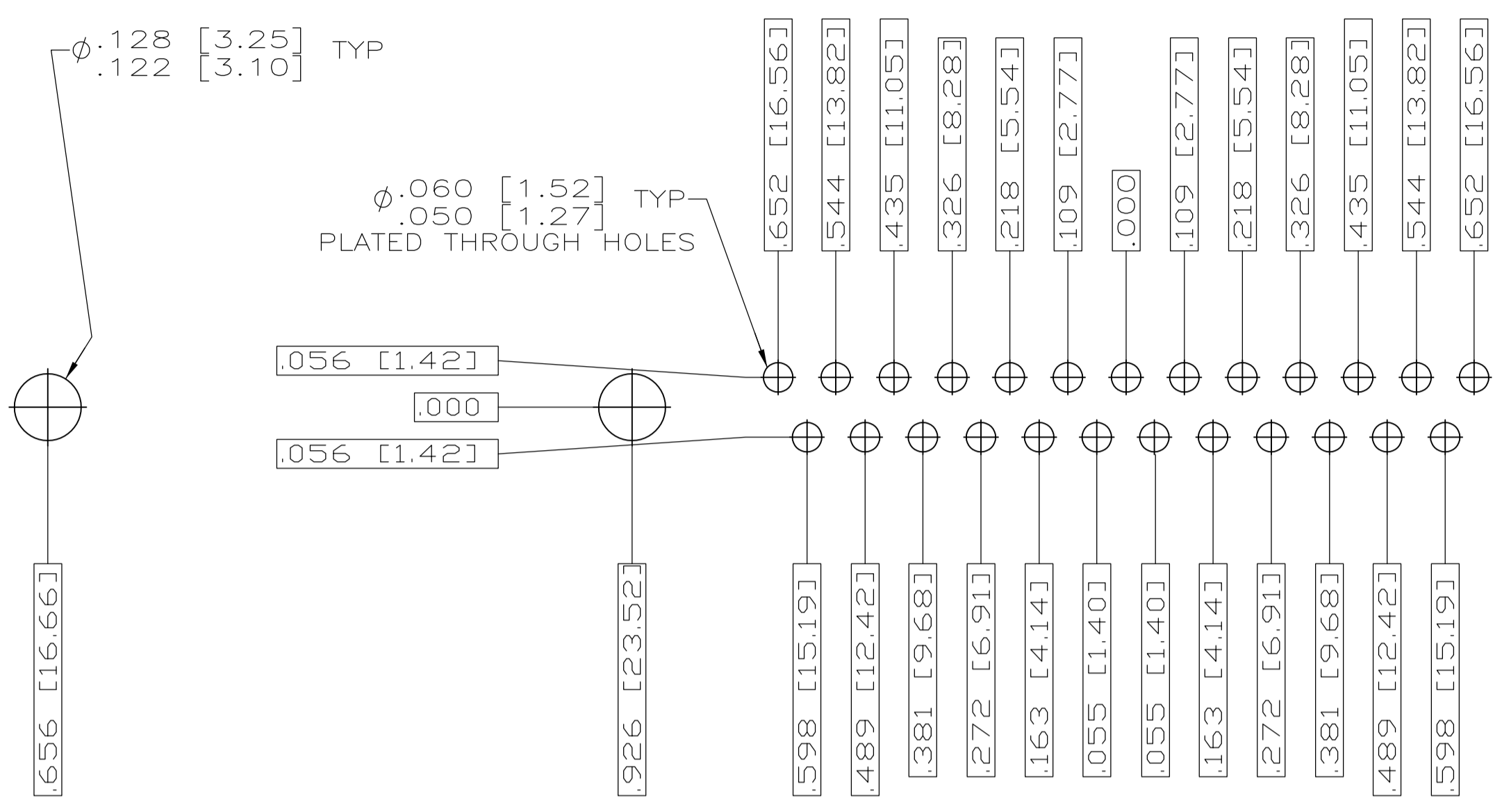
SCALE: 4:1 SHEET 1 OF 2



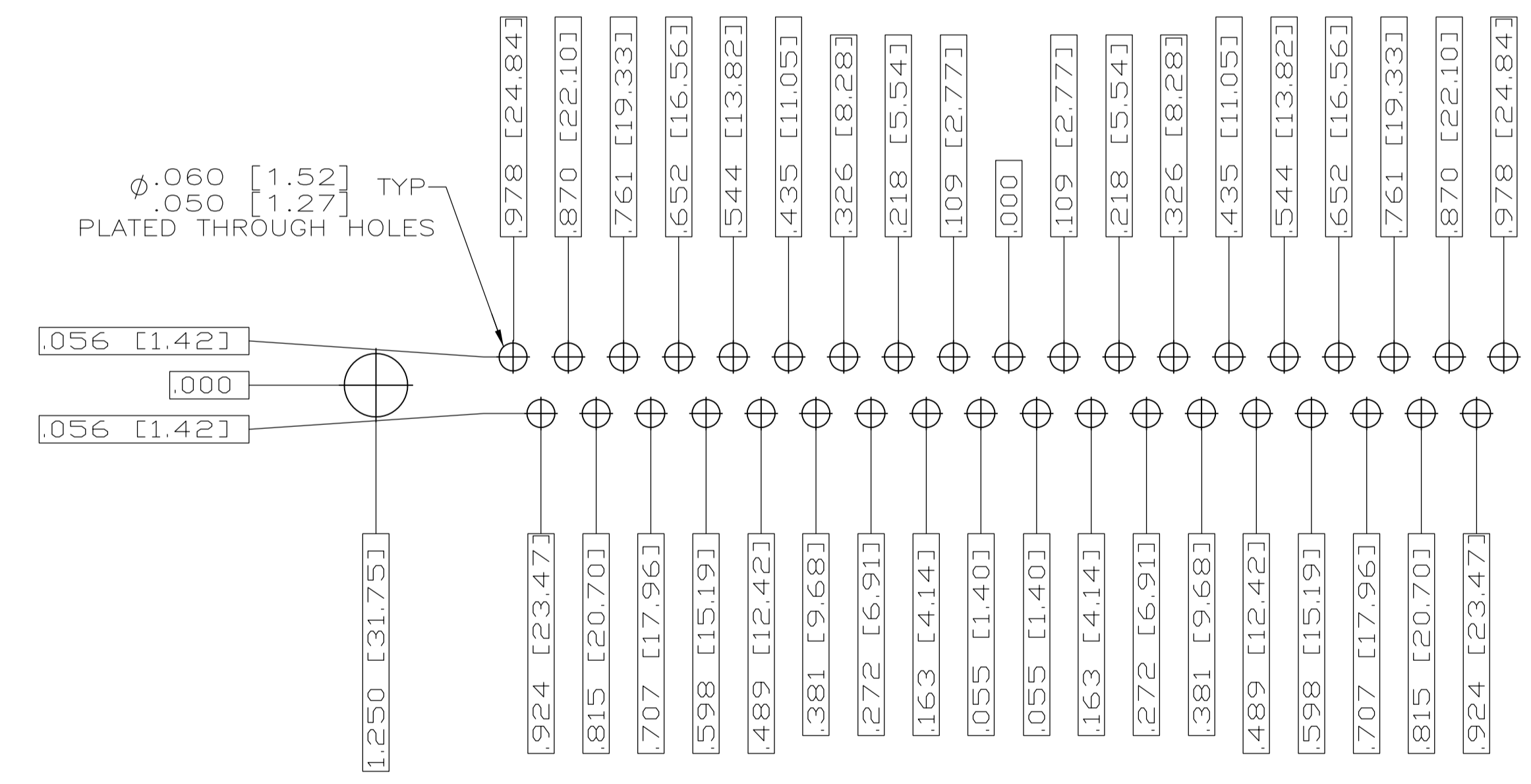
RECOMMENDED P.C. BOARD LAYOUT
 SHELL SIZE 1 (9 POSITION) Δ



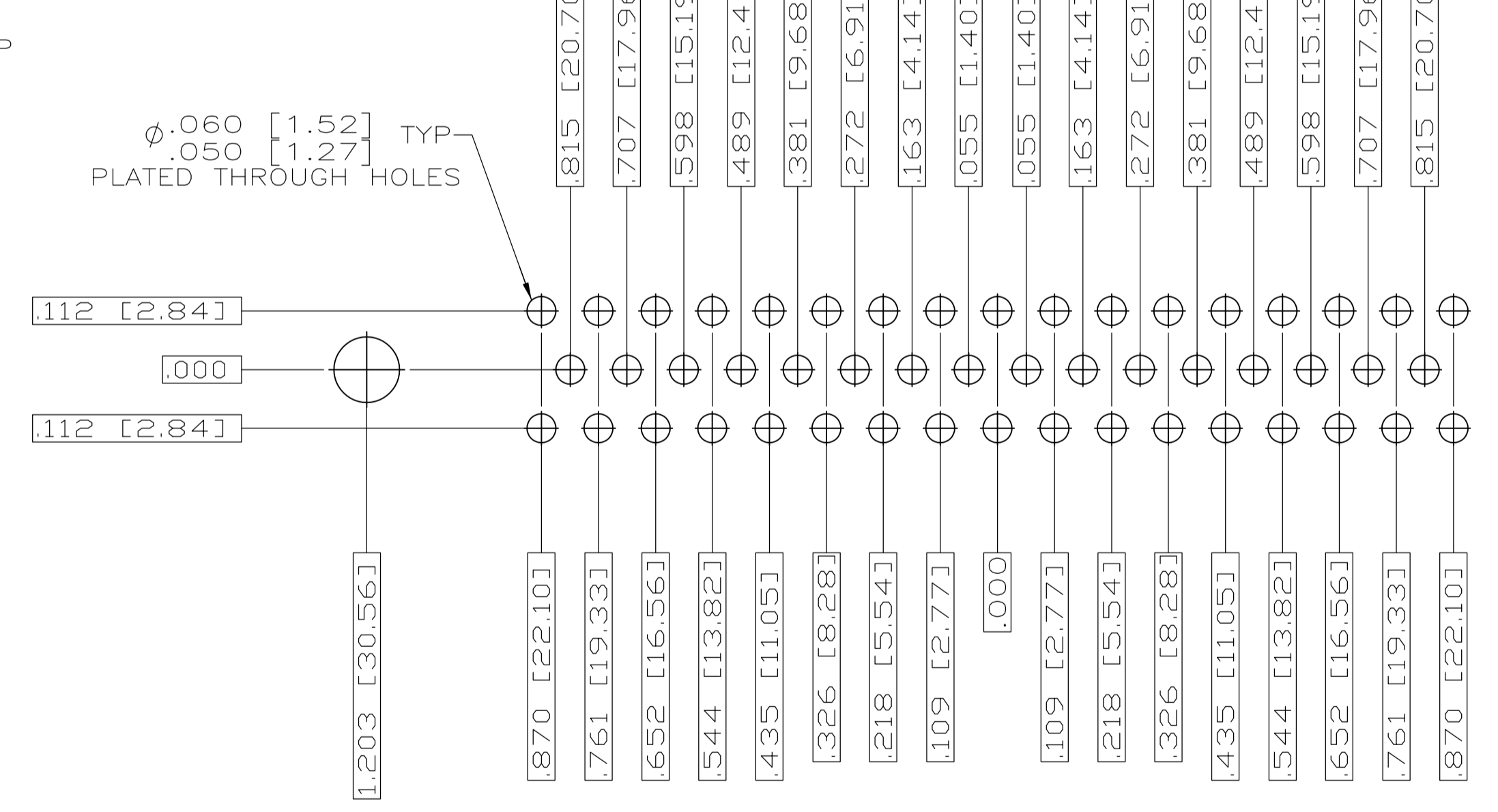
RECOMMENDED P.C. BOARD LAYOUT
 SHELL SIZE 2 (15 POSITION) Δ



RECOMMENDED P.C. BOARD LAYOUT
 SHELL SIZE 3 (25 POSITION) Δ



RECOMMENDED P.C. BOARD LAYOUT
 SHELL SIZE 4 (37 POSITION) Δ



RECOMMENDED P.C. BOARD LAYOUT
 SHELL SIZE 5 (50 POSITION) Δ

THIS DRAWING IS A CONTROLLED DOCUMENT.		DWN C.C. THOMAS 2-10-06 CHK D. HOFFMAN 2-23-06 APVO D. MILLER 2-23-06	STE TE Connectivity	
DIMENSIONS: INCHES 0 PL ± .010 1 PL ± .010 2 PL ± .010 3 PL ± .010 4 PL ± .010 ANGLES ± .1°	TOLERANCES UNLESS OTHERWISE SPECIFIED: ± .005 ± .005 ± .005 ± .005 ± .005 ± .005	NAME PLUG ASSY,AMPLIMITE RIGHT ANGLE,SERIES 109,SIZE 1 THRU 5	SIZE A1	CAGE CODE 00779
MATERIAL SEE CALLOUTS		FINISH SEE CALLOUTS	DRAWING NO 1757841	RESTRICTED TO CUSTOMER DRAWING
			SCALE 4:1	SHEET 2 OF 2

X-ON Electronics

Largest Supplier of Electrical and Electronic Components

Click to view similar products for [TE Connectivity](#) manufacturer:

Other Similar products are found below :

[D38999/24FJ4AN](#) [570416-000](#) [CLTEQ-M81CE-SSRELAY-4-20V](#) [4-1195131-0](#) [650069-000](#) [SMD100-2](#) [358838-000](#) [CB-1022B-78](#)
[RM707012](#) [RP410012](#) [MMS42](#) [1-640426-8](#) [2EDL4CM](#) [DTS20W19-11PD-3028-LC](#) [RM202615](#) [NC6-P104-06](#) [MSPS103B](#) [DTS26F21-](#)
[41HE-LC](#) [DTS26F21-41AE](#) [DTS26F21-41PE-LC](#) [DTS26F21-11SE-3028-LC](#) [30DCB6](#) [1932144-1](#) [293545-4](#) [LVR125S](#) [MS27466T25F4PB](#)
[CKB-38-78010](#) [TR04AI-TINELLOCKRING](#) [1206SFF150F/63-2](#) [D38999/20JB35HA](#) [TE1500A2R2J](#) [D38999/20WC8BB](#) [DTS24F19-11SC-](#)
[3028-LC](#) [D38999/24WG11HA](#) [D38999/24WG11HN](#) [MS27467T21F11H](#) [DJT16E21-11HA](#) [MS27467T21F35J](#) [MS27467T21F11J](#)
[MS27467T21F16H-LC](#) [MS27467T21F35H](#) [MS27467T21F41H-LC](#) [1206SFH150F/24-2](#) [RP330024](#) [DJT16E21-11PA-LC](#) [DJT16E21-11HA-](#)
[LC](#) [DJT16E21-11AA](#) [MS27467T21B11JA](#) [DJT16E21-11JA](#) [MS27467T21B11JA-LC](#)