

THIS DRAWING IS UNPUBLISHED.

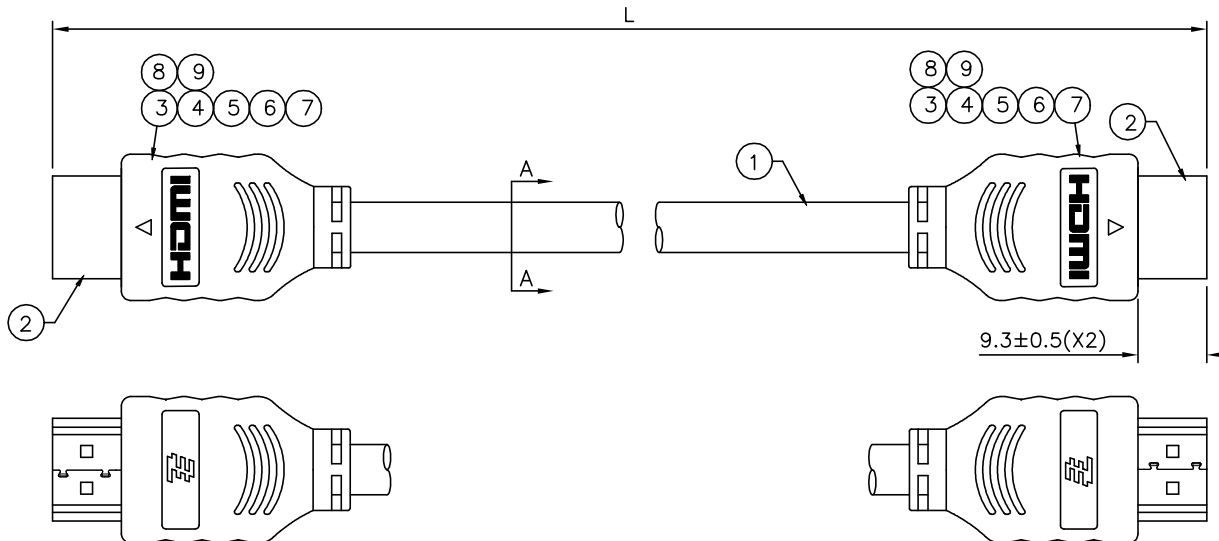
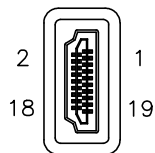
RELEASED FOR PUBLICATION

ALL RIGHTS RESERVED.

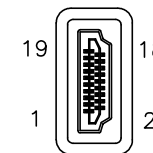
REVISIONS

P	LTR	DESCRIPTION	DATE	DWN	APVD
	K	ECR-19-004519	21MAR2019	JC	DZ

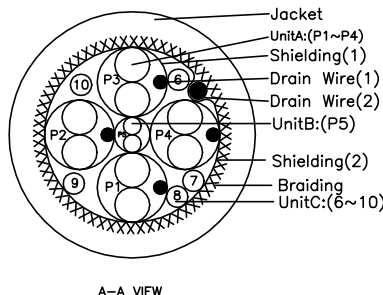
CONNECTOR A



CONNECTOR B



CONNECTION TABLE			
CABLE		CONN.A	CONN.B
UNIT	WIRE COLOR	PIN	PIN
A (BROWN)	GREEN	1	1
	DRAIN WIRE	2	2
	WHITE	3	3
A (GREEN)	GREEN	4	4
	DRAIN WIRE	5	5
	WHITE	6	6
A (BLUE)	GREEN	7	7
	DRAIN WIRE	8	8
	WHITE	9	9
A (RED)	GREEN	10	10
	DRAIN WIRE	11	11
	WHITE	12	12
C	RED	13	13
C	VIOLET	14	14
C	WHITE	15	15
C	GRAY	16	16
B	YELLOW	17	17
	ORANGE	18	18
C	PINK	19	19
SHIELD BRAID		SHELL	SHELL



- UNIT A:  
P1: WHITE-GREEN  
P2: WHITE-GREEN  
P3: WHITE-GREEN  
P4: WHITE-GREEN
- UNIT B:  
P5: YELLOW-ORANGE
- UNIT C:  
6. RED  
7. VIOLET  
8. WHITE  
9. GRAY  
10. PINK

TE P/N	LENGTH(L)
1770019-8	5000±50
1770019-7	1500±20
1770019-6	1000±20
1770019-5	750±10
1770019-4	500±10
1770019-3	250±10
1770019-2	3000±30
1770019-1	2000±20

Q'TY	U/M	DESCRIPTION	ITEM NO.
0.003	LB	SOLDER BAR	9
0.003	LB	SOLDER WIRE	8
2	PC	SHELL, FOR HDMI	7
0.25	MR	TAPE,VINYL, COLOR: BLACK,W:12.5MM, L:50MM	6
0.1	MR	HEAT SHRINK TUBING, ID: 0.7MM, BLACK	5
0.018	KG	PVC, 40P, COLOR: BLACK	4
0.07	MR	HEAT SHRINK TUBING, ID: 1.5MM, BLACK	3
2	PC	HDMI 19PIN PLUG, CONTACT: 30u" GOLD, INSULATION: BLACK, SHELL: NICKEL PLATED	2
AR	MR	UL20276 (1P*30AWG+DRAIN+AL/MYLAR)*4+30AWG*1P +28AWG*5C+AL/MYLAR+DRAIN+BRAID, COLOR: BLACK	1

THIS DRAWING IS A CONTROLLED DOCUMENT.

DWN JACKSON.CHEN 21MAR2019  
CHK STING XU 21MAR2019  
APVD STING XU 21MAR2019

NAME: C/A,HDMI TO HDMI

SIZE: A3 CAGE CODE: 00779 DRAWING NO: C=1770019 RESTRICTED TO: -

WEIGHT: 6.96KG

CUSTOMER DRAWING SCALE: 1:1 SHEET: 1 OF 3 REV: K

GENERAL TOLERANCE  
0mm~10mm : ±1  
10mm~50mm : ±2  
50mm~100mm ±3

4

3

2

1

THIS DRAWING IS UNPUBLISHED.

RELEASED FOR PUBLICATION

ALL RIGHTS RESERVED.

© COPYRIGHT - By -

REVISIONS

P	LTR	DESCRIPTION	DATE	DWN	APVD
-	-	SEE SHEET 1	-	-	-

NOTES:

PACKING MATERIAL MET TE SPEC TEC-138-702.

\* CADMIUM AND CADMIUM COMPOUNDS CONTENT:

5 PPM UNDER (PLASTIC,RUBBER,INK,PIGMENT,PAINT)

\* LEAD,CADMIUM,CHROM VI AND MERCURY IN PACKAGING MATERIALS CONTENT: 100 PPM (COMBINED) UNDER.

1. MATERIAL:

1.1 BAG: POLYSTYRENES

1.2 BOX: CORRUGATED FIBERBOARD

1.3 CLAPBOARD: CORRUGATED FIBERBOARD

2. DIMENSION:

2.1 BAG: L=318, W=229

△ 2.2 BOX: L=335, W=300, H=300

△ 2.3 BOX: L=350, W=299, H=146

△ 2.4 BOX: L=540, W=345, H=240

△	13.2KG	233.3g	60	1	60	1770019-8
△	5.77KG	85.4g	50	1	50	1770019-7
△	4.72KG	64.3g	50	1	50	1770019-6
△	8.94KG	148.8g	50	1	50	1770019-2
△	7.89KG	106.5g	60	1	60	1770019-1
	GROSS WEIGHT	NET WEIGHT	PCS/BAG	BAG/BOX	PCS/BOX	PART NUMBER

THIS DRAWING IS A CONTROLLED DOCUMENT.

 DWN JACKSON.CHEN 21MAR2019  
 CHK STING XU 21MAR2019

TE Connectivity Ltd.

 DIMENSIONS: mm  
 TOLERANCES UNLESS OTHERWISE SPECIFIED:



 0 PLC ± -  
 1 PLC ± -  
 2 PLC ± -  
 3 PLC ± -  
 4 PLC ANGLES ± -

 APVD STING XU 21MAR2019  
 PRODUCT SPEC

NAME

C/A,HDMI TO HDMI

APPLICATION SPEC

SIZE

CAGE CODE

DRAWING NO

RESTRICTED TO

MATERIAL -

FINISH -

WEIGHT 6.96KG

A300779

C=1770019

CUSTOMER DRAWING

SCALE 1:1

SHEET 2 OF 3

REV K

1470-19 (1/15)

THIS DRAWING IS UNPUBLISHED.

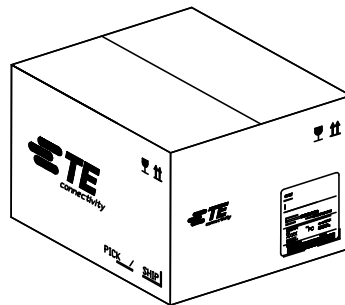
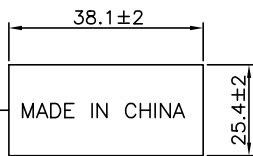
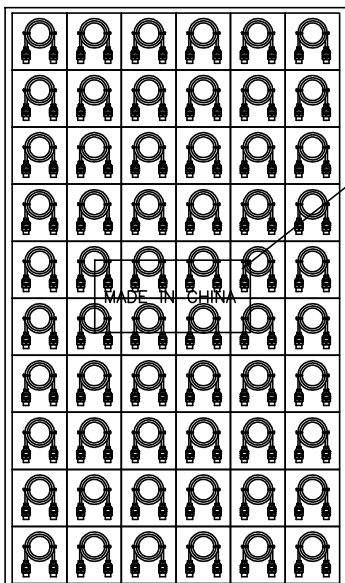
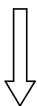
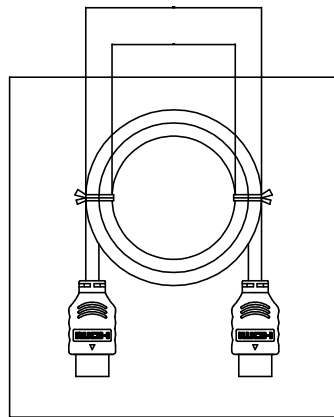
RELEASED FOR PUBLICATION

ALL RIGHTS RESERVED.

© COPYRIGHT - By -

REVISIONS

P	LTR	DESCRIPTION	DATE	DWN	APVD
-	-	SEE SHEET 1	-	-	-



NOTES:

PACKING MATERIAL MET TE SPEC TEC-138-702.

\* CADMIUM AND CADMIUM COMPOUNDS CONTENT:

5 PPM UNDER (PLASTIC,RUBBER,INK,PIGMENT,PAINT)

\* LEAD,CADMIUM,CHROM VI AND MERCURY IN PACKAGING MATERIALS CONTENT: 100 PPM (COMBINED) UNDER.

1. MATERIAL:

1.1 BAG: POLYSTYRENES

1.2 BOX: CORRUGATED FIBERBOARD

1.3 CLAPBOARD: CORRUGATED FIBERBOARD

2. DIMENSION:

2.1 BAG: L=318, W=229

△ 2.2 BOX: L=335, W=300, H=300

△ 2.3 BOX: L=350, W=299, H=146

△ 2.4 BOX: L=540, W=345, H=240

△	4.2KG	53.7g	50	1	50	1770019-5
△	3.79KG	43.3g	50	1	50	1770019-4
△	3.2KG	32.6g	50	1	50	1770019-3
	GROSS WEIGHT	NET WEIGHT	PCS/BAG	BAG/BOX	PCS/BOX	PART NUMBER

THIS DRAWING IS A CONTROLLED DOCUMENT.

DWN JACKSON.CHEN 21MAR2019

CHK STING XU 21MAR2019

APVD STING XU 21MAR2019

PRODUCT SPEC

APPLICATION SPEC

WEIGHT

CUSTOMER DRAWING



TE Connectivity Ltd.

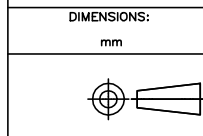
NAME

C/A,HDMI TO HDMI

SIZE CAGE CODE DRAWING NO RESTRICTED TO

A3 00779 C=1770019

SCALE 1:1 SHEET 3 OF 3 REV K



DIMENSIONS:	TOLERANCES UNLESS OTHERWISE SPECIFIED:
mm	
0 PLC	± -
1 PLC	± -
2 PLC	± -
3 PLC	± -
4 PLC	± -
ANGLES	± -

MATERIAL	FINISH
-	-

## X-ON Electronics

Largest Supplier of Electrical and Electronic Components

*Click to view similar products for [HDMI Cables](#) category:*

*Click to view products by [TE Connectivity](#) manufacturer:*

Other Similar products are found below :

[426301400-3](#) [68767-0003](#) [CA-MINIDP-HDMIF-10FT](#) [HP-19AFMM-SL7A01](#) [HP-19AFMM-SL7A05](#) [S-HDI-DVI-2](#) [S-HDI-DVI-5](#) [10HM-15128-01](#) [HD0003](#) [31888](#) [31889](#) [31893](#) [31897](#) [31907](#) [31908](#) [31911](#) [31913](#) [31914](#) [31915](#) [31919](#) [31920](#) [31921](#) [31923](#) [31925](#) [31926](#) [31929](#) [31930](#) [31932](#) [31935](#) [31936](#) [31937](#) [31938](#) [CV0036B](#) [CV0038](#) [CV0055](#) [CV0057](#) [CV0057B](#) [CV0058](#) [CV0058B](#) [CV0059B](#) [50580](#) [50581](#) [50582](#) [50989](#) [51579](#) [51586](#) [51724](#) [51758](#) [51957](#) [52859](#)