

THIS DRAWING IS UNPUBLISHED.

RELEASED FOR PUBLICATION

© COPYRIGHT - TE Connectivity Ltd.

ALL RIGHTS RESERVED.

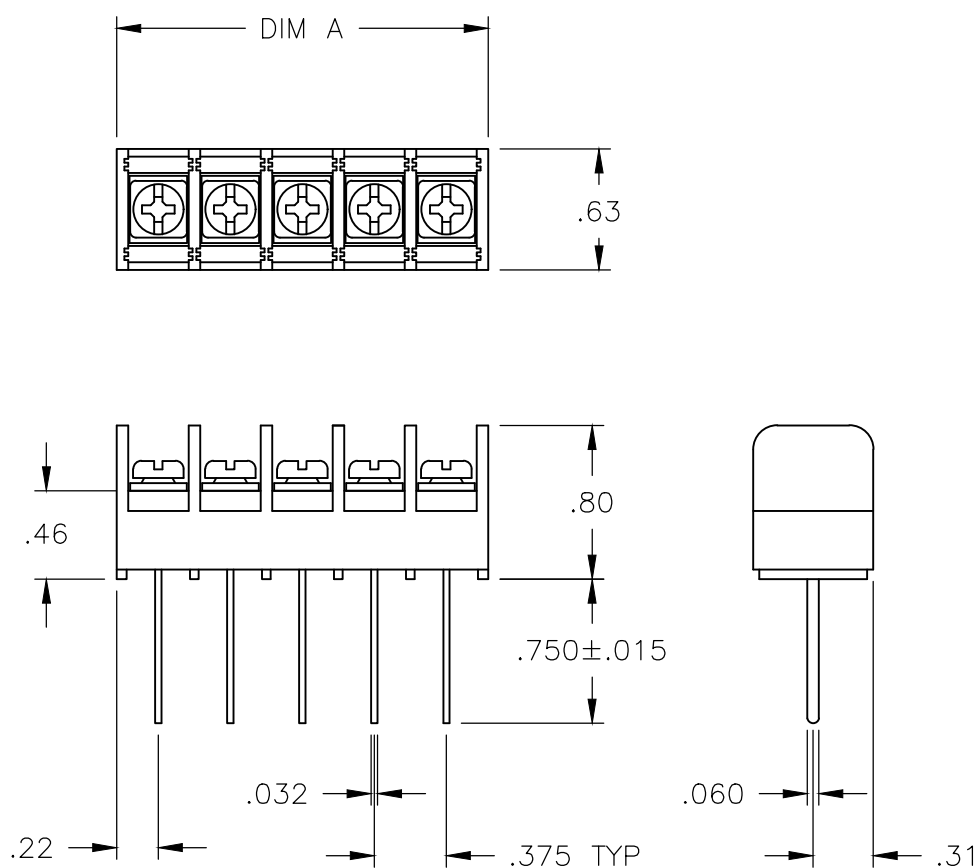
REVISIONS

P	LTR	DESCRIPTION	DATE	DWN	APVD
	H2	PN 1776175-2 REACTIVATED	05SEP2019	RK	PS

MATERIAL:  
 HOUSING: THERMOPLASTIC, UL94V-0, BLACK.  
 TERMINALS: BRIGHT TIN OVER COPPER ALLOY.  
 SCREWS: #6-32 STEEL, ZINC PLATING W/ CLEAR CHROMATE.

ELECTRICAL:  
 RATED CURRENT UL/CSA:  
 CLASS C: 20A, 300V.  
 CLASS D: 5A, 600V.  
 WIRE RANGE: 12-22 AWG

MECHANICAL:  
 RECOMMENDED TORQUE: 7 IN-LB.  
 OPERATING TEMP.: 105°C MAX.



SEE FIGURE

SEE FIGURE

SEE FIGURE  
SEE FIGURE

SEE FIGURE  
SEE FIGURE

OBSOLETE	9.436	25	JC6-W108-25	3-1546703-9
	9.061	24	JC6-W108-24	3-1546703-8
	8.686	23	JC6-W108-23	3-1546703-7
	8.311	22	JC6-W108-22	3-1546703-6
	7.936	21	JC6-W108-21	3-1546703-5
	7.561	20	JC6-W108-20	3-796985-0
	7.186	19	JC6-W108-19	3-1546703-4
	6.811	18	JC6-W108-18	3-1546703-3
	6.436	17	JC6-W108-17	3-1546703-2
	6.061	16	JC6-W108-16	3-1546703-1
	5.686	15	JC6-W108-15	3-1546703-0
	5.311	14	JC6-W108-14	2-1546703-9
	4.936	13	JC6-W108-13	2-1546703-8
	4.561	12	JC6-W108-12-198	1776175-1
	4.561	12	JC6-W108-12	2-796985-9
	4.186	11	JC6-W108-11	2-1546703-7
	3.811	10	JC6-W108-10	2-1546703-6
	3.436	9	JC6-W108-09	2-1546703-5
	3.811	8	JC6-W108-08-201	1776175-4
	3.061	8	JC6-W108-08	2-1546703-4
2.686	7	JC6-W108-07	2-1546703-3	
2.311	6	JC6-W108-06-234	1776175-6	
2.311	6	JC6-W108-06-200	1776175-3	
2.311	6	JC6-W108-06	2-1546703-2	
1.936	5	JC6-W108-05-199	1776175-2	
OBSOLETE	1.936	5	JC6-W108-05	1-1437666-7
	1.561	4	JC6-W108-04	2-1546703-1
	1.186	3	JC6-W108-03-246	1776175-7
	1.186	3	JC6-W108-03-231	1776175-5
	1.186	3	JC6-W108-03	1-1437666-6
.811	2	JC6-W108-02	2-1546703-0	
DIM A	NO OF POS	CATALOG NUMBER	TE PART NO.	

THIS DRAWING IS A CONTROLLED DOCUMENT.		DWN S SCHLEGEL 5/27/03	<b>STE</b> TE Connectivity Ltd.	
DIMENSIONS: INCHES		CHK S. YODER 5/27/03		
TOLERANCES UNLESS OTHERWISE SPECIFIED:		APVD S. YODER 5/27/03	NAME	
0 PLC ± -		PRODUCT SPEC	JC6-W108-XX ASSEMBLY	
1 PLC ± -		APPLICATION SPEC	RESTRICTED TO	
2 PLC ± .01		WEIGHT -	SIZE A3	CAGE CODE 00779
3 PLC ± .005		CUSTOMER DRAWING	DRAWING NO C-1-1437666-6	
4 PLC ± -			SCALE NTS	SHEET 1 OF 2
ANGLES ± -				
FINISH -				

THIS DRAWING IS UNPUBLISHED.

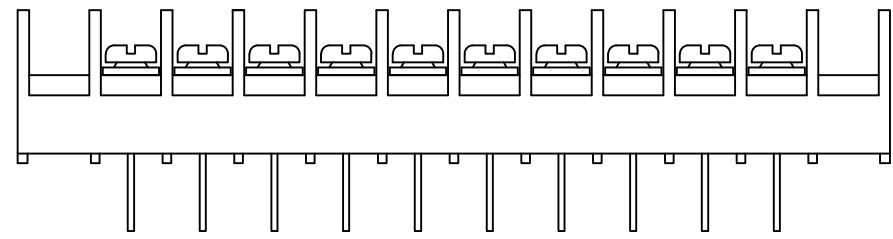
RELEASED FOR PUBLICATION

© COPYRIGHT - TE Connectivity Ltd.

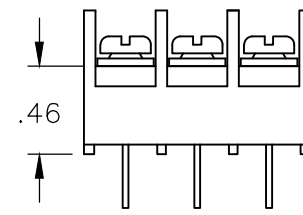
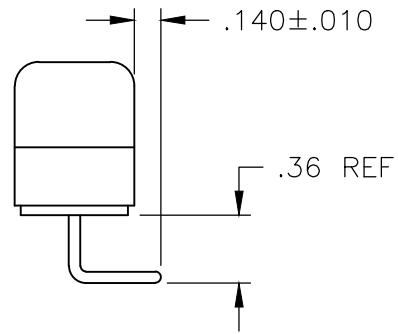
ALL RIGHTS RESERVED.

REVISIONS

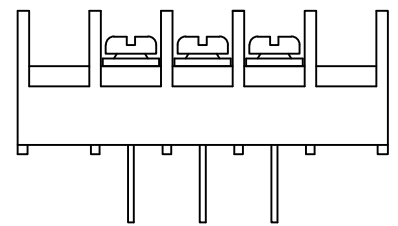
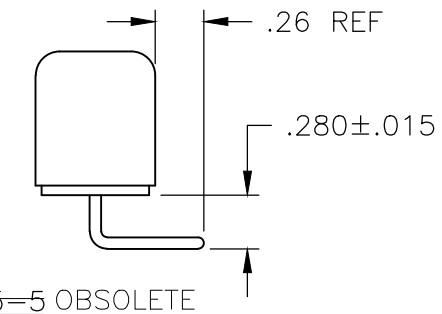
P	LTR	DESCRIPTION	DATE	DWN	APVD
-	-	SEE SHEET 1	-	-	-



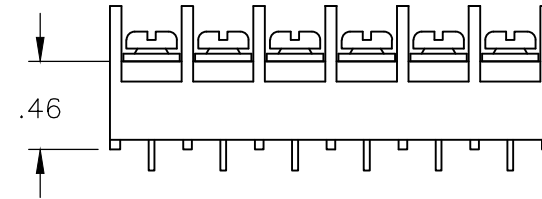
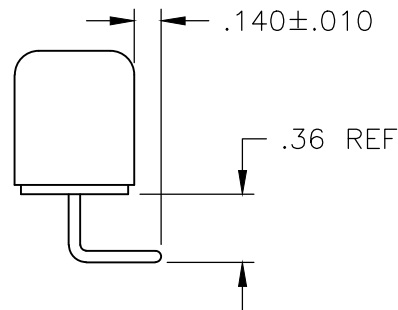
1776175-1 OBSOLETE



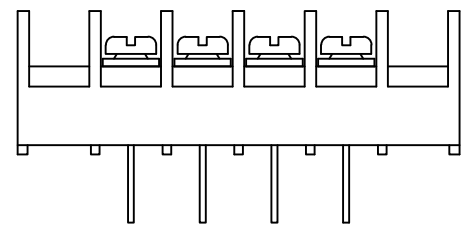
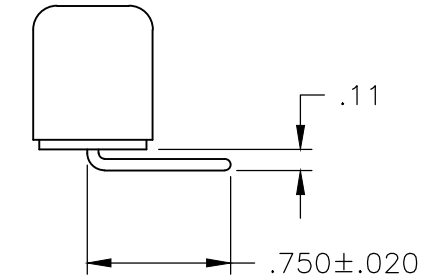
1776175-5 OBSOLETE



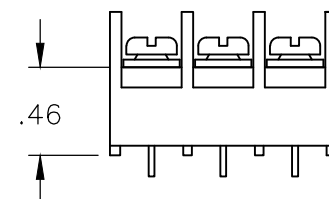
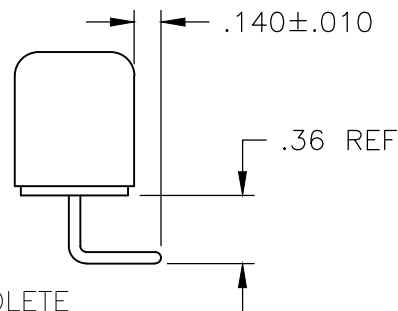
1776175-2



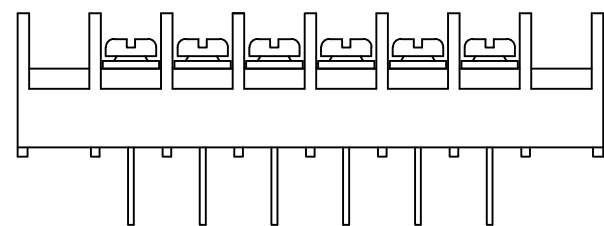
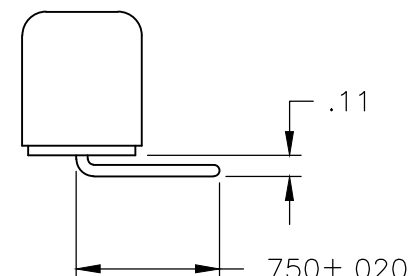
OBSOLETE 1776175-6



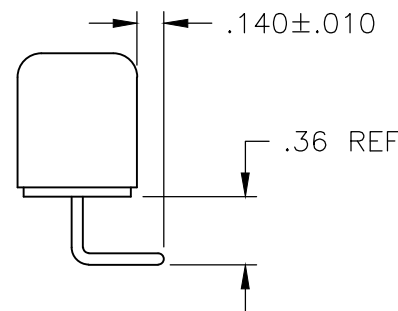
1776175-3 OBSOLETE



OBSOLETE 1776175-7

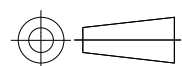


1776175-4 OBSOLETE



THIS DRAWING IS A CONTROLLED DOCUMENT.

DIMENSIONS:  
INCHES



TOLERANCES UNLESS OTHERWISE SPECIFIED:

0 PLC	± -
1 PLC	± -
2 PLC	± .01
3 PLC	± .005
4 PLC	± -
ANGLES	± -

MATERIAL

FINISH

DWN S. SCHLEGEL 5/27/03

CHK S. YODER 5/27/03

APVD S. YODER 5/27/03

PRODUCT SPEC

APPLICATION SPEC

WEIGHT



TE Connectivity Ltd.

NAME

JC6-W108-XX ASSEMBLY

SIZE

CAGE CODE

DRAWING NO

RESTRICTED TO

A3

00779

C-1

1-1437666-6

-

CUSTOMER DRAWING

SCALE NTS

SHEET 2 of 2

REV H2

## X-ON Electronics

Largest Supplier of Electrical and Electronic Components

*Click to view similar products for [Barrier Terminal Blocks](#) category:*

*Click to view products by [TE Connectivity](#) manufacturer:*

Other Similar products are found below :

[6C1N03](#) [6PCR-02-008](#) [6PCR-05-008](#) [6PCR-08-008](#) [6PCR-21-006](#) [6PCV-06-008](#) [6PCV-10-009](#) [6PCV-15-008](#) [6STR-06-006](#) [6STR-08-006](#)  
[6STR-12-008](#) [6STR-14-008](#) [6STR-16-008](#) [6STR-17-008](#) [6STR-21-008](#) [6STR-25-008](#) [6STR-27-008](#) [6STV-03-006](#) [6STV-03-008](#) [6STV-04-006](#) [6STV-10-006](#) [6WWR-03](#) [6WWV-12-008](#) [6WWV-16-008](#) [7-1546701-0](#) [72212603](#) [72503-C](#) [72504-C-50](#) [73203](#) [76007](#) [7604-501LF](#)  
[77010-50](#) [796985-3](#) [796988-4](#) [7C1N08](#) [8-1437402-5](#) [8-1437402-7](#) [8-1546158-0](#) [870505](#) [870903](#) [8PCR-06-006](#) [8PCV-02-008](#) [8PCV-05-008](#)  
[8PCV-09-006](#) [8PCV-15-006](#) [8PCV-17-006](#) [8QCR-03-008](#) [8STV-04-006](#) [9-1437402-3](#) [A103104](#)