

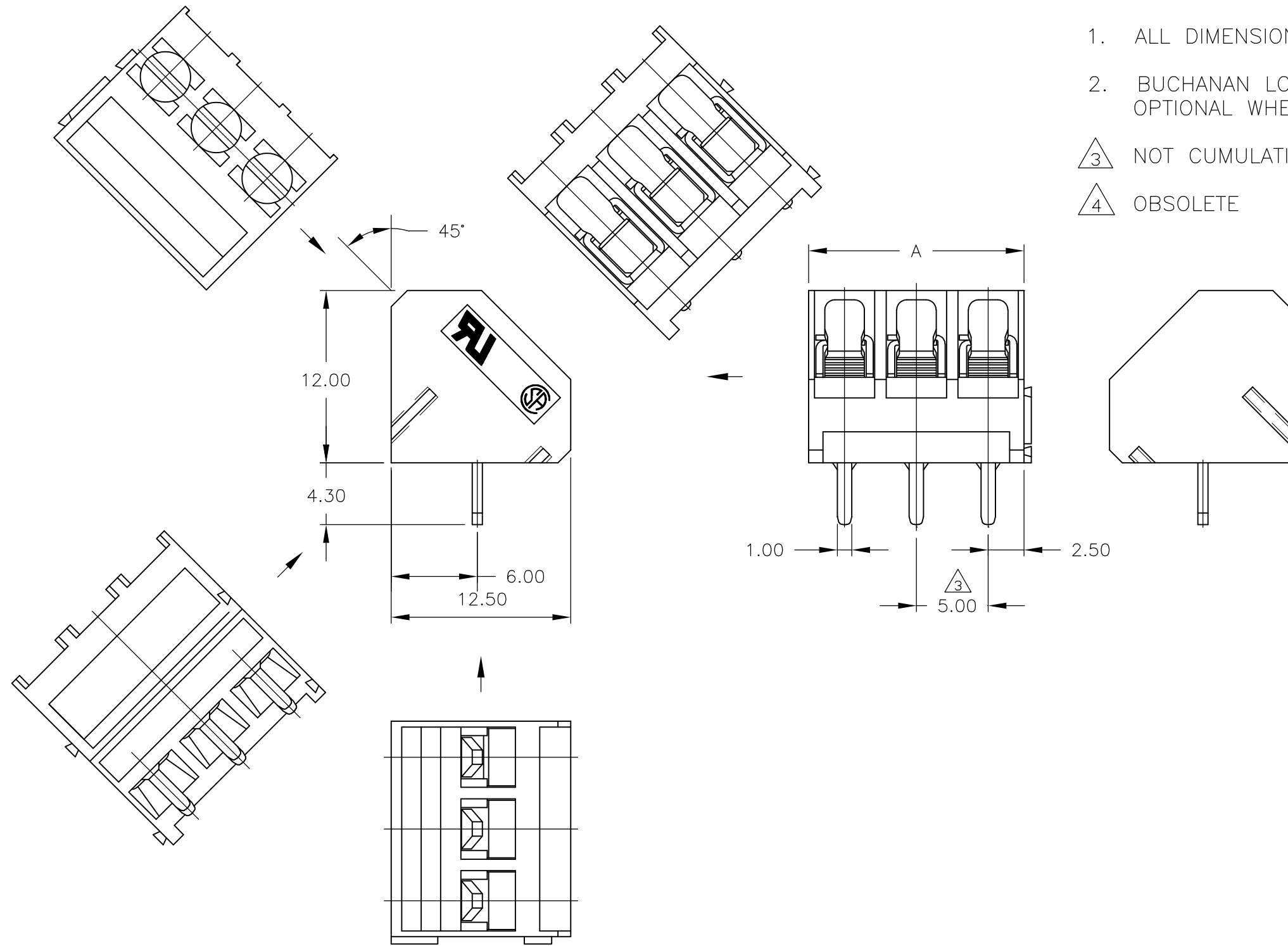
THIS DRAWING IS UNPUBLISHED. RELEASED FOR PUBLICATION
 © COPYRIGHT - By - ALL RIGHTS RESERVED.

REVISIONS					
P	LTR	DESCRIPTION	DATE	DWN	APVD
	P1	PCB LAYOUT ADDED HIGH TEMP PHRASE REMOVED	03AUG16	FP	NG

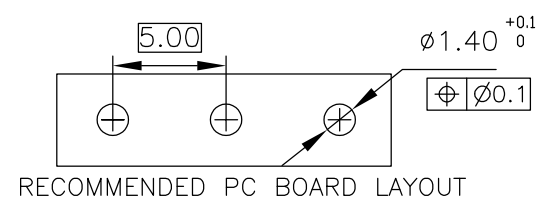
NOTES:

1. ALL DIMENSIONS ARE IN mm.
2. BUCHANAN LOGO TO APPEAR ON HOUSING LOCATION OPTIONAL WHERE SPACE PERMITS.

- △3 NOT CUMULATIVE
- △4 OBSOLETE



△4	120.00	24	2-1776252-4
△4	115.00	23	2-1776252-3
△4	110.00	22	2-1776252-2
△4	105.00	21	2-1776252-1
△4	100.00	20	2-1776252-0
△4	95.00	19	1-1776252-9
△4	90.00	18	1-1776252-8
△4	85.00	17	1-1776252-7
△4	80.00	16	1-1776252-6
△4	75.00	15	1-1776252-5
△4	70.00	14	1-1776252-4
△4	65.00	13	1-1776252-3
△4	60.00	12	1-1776252-2
△4	55.00	11	1-1776252-1
△4	50.00	10	1-1776252-0
	45.00	9	1776252-9
	40.00	8	1776252-8
	35.00	7	1776252-7
	30.00	6	1776252-6
	25.00	5	1776252-5
	20.00	4	1776252-4
	15.00	3	1776252-3
	10.00	2	1776252-2
	DIM. A	NO. OF POS.	PART NUMBER



THIS DRAWING IS A CONTROLLED DOCUMENT.		DWN S SCHLEGEL 5/5/05	TE Connectivity NAME TERMINAL BLOCK 45 DEGREE WIRE INLET W/ INTERLOCK, 5.0mm PITCH				
DIMENSIONS: mm		CHK C RICHARD 5/5/05					
TOLERANCES UNLESS OTHERWISE SPECIFIED:		APVD C RICHARD 5/5/05					
0 PLC ± - 1 PLC ± 0.3 2 PLC ± 0.25 3 PLC ± - 4 PLC ± - ANGLES ± -		PRODUCT SPEC -					
MATERIAL -		FINISH -	APPLICATION SPEC -	SIZE A3	CAGE CODE 00779	DRAWING NO C-1776252	RESTRICTED TO -
CUSTOMER DRAWING			WEIGHT 0	SCALE NTS	SHEET 1 of 2	REV P1	

THIS DRAWING IS UNPUBLISHED.

RELEASED FOR PUBLICATION

© COPYRIGHT - By -

ALL RIGHTS RESERVED.

REVISIONS

P	LTR	DESCRIPTION	DATE	DWN	APVD
-	-	SEE SHEET 1	-	-	-

1. Application and Features:

- 1-1. This series of terminal block has a built-in self lift wire guard clamp to protect against wire pinching.
- 1-2. Standard sizes are 2 and 3 way-blocks, but every number of contact can be combined, by simply plugging them together and can be ordered as required**
- 1-3. Since the wire inlet and the screw are in a 45° position, these terminal blocks are designed specifically to solve poor accessibility problems.—

2-2. Electrical:

- 2-2-1. Current rating: 10 Amps max.
- 2-2-2. Contact resistance: 20m Ω (Max).
- 2-2-3. Insulation resistance: 5000MΩ /1000V.
- 2-2-4. Withstanding Voltage: 1500VAC (1min).
test time =60sec/1pcs
- 2-2-5. Operation Voltage: 300V AC/DC.
- 2-2-6. Wire Range: 14-22 AWG.

2. Technical Data:

2-1. Material:

- 2-1-1. HOUSING: PA 6,6 UL 94 V-0 (Blue).
- 2-1-2. Contact: Brass(Cu Zn), Tin plated.
- 2-1-3. Screw: Steel galvanized and chromitized, M2.6

2-3. Mechanical:

- 2-3-1. Torque: 4 Kg.cm (Max).
- 2-3-2. Operating temperature: -55°C to +105°C.
- 2-3-3. Solderability: 95% coverage (min).
test temperature=230°C±10°C
test time= 3sec ± 0.5sec.

THIS DRAWING IS A CONTROLLED DOCUMENT.		DWN S SCHLEGEL	5/5/05	STE TE Connectivity		
DIMENSIONS: mm		CHK C RICHARD	5/5/05			
TOLERANCES UNLESS OTHERWISE SPECIFIED:		APVD C RICHARD	5/5/05	NAME TERMINAL BLOCK 45 DEGREE WIRE INLET W/ INTERLOCK, 5.0mm PITCH		
0 PLC ± -		PRODUCT SPEC		-		
1 PLC ± 0.3		APPLICATION SPEC		-		
2 PLC ± 0.25		WEIGHT		-		
3 PLC ± -		SIZE		A3		RESTRICTED TO
4 PLC ± -		CAGE CODE		00779		-
ANGLES ± -		DRAWING NO		C-1776252		
MATERIAL		FINISH		SCALE		REV
-		-		NTS		P1
CUSTOMER DRAWING				SHEET		2 OF 2

X-ON Electronics

Largest Supplier of Electrical and Electronic Components

Click to view similar products for [Fixed Terminal Blocks](#) category:

Click to view products by [TE Connectivity](#) manufacturer:

Other Similar products are found below :

[MBE-1512](#) [MBE-154](#) [MBE-156](#) [MBES-153](#) [MBES-156](#) [MH-2512](#) [MHE-132](#) [MHE-163](#) [MI-254 \(35\)](#) [MI-272](#) [880507](#) [MPT-275](#)
[15602-04-08-21](#) [BA311TU](#) [BA411SU](#) [MV-152](#) [MV-252-D](#) [MV-253/NCNOC](#) [MV-254-D](#) [MV-255](#) [MV-462](#) [MV-493](#) [MVE-252](#) [MVE-253](#)
[MVE-273](#) [MVEB-153](#) [1700096](#) [1705142](#) [1712417](#) [1713020](#) [1713088](#) [1745195](#) [1760594](#) [1776118-2](#) [1790852](#) [1-796689-8](#) [1-796692-6](#)
[1800001](#) [1800114](#) [1995279](#) [20020314-C121B01LF](#) [20020316-G041B01LF](#) [CB2-12](#) [KP03215000J0G](#) [KP04215000J0G](#) [S451](#) [282802-2](#)
[29.007](#) [29.116](#) [30.103](#)