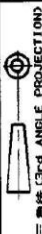
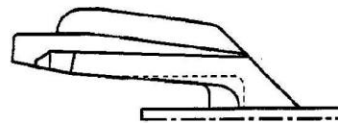
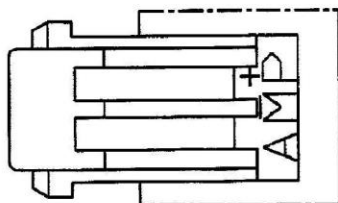
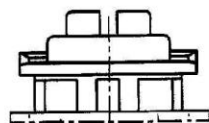


NUMBER C-177901

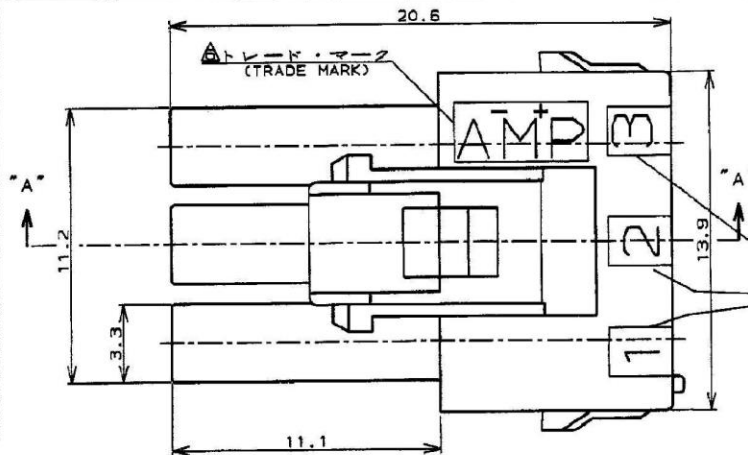


METRIC

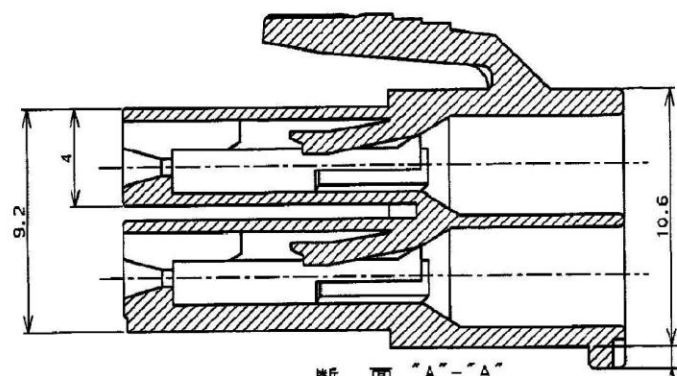
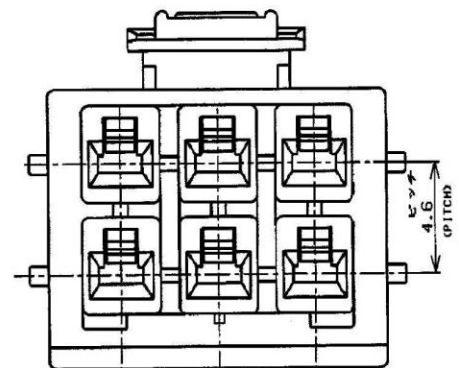
ロックタイプII
LOCK TYPE II



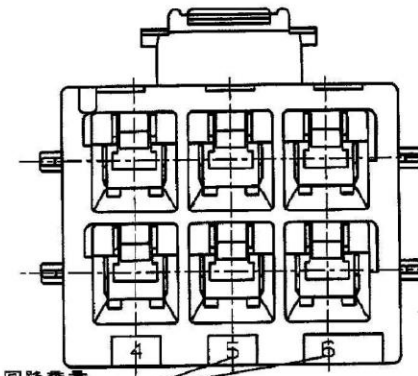
本図ロックタイプIを示す
AS SHOWN LOCK TYPE I



回路番号
(CIRCUIT No.)



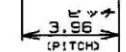
断面 "A-A"
(SECT)



回路番号
(CIRCUIT No.)

表1 (TABLE 1)

トレードマーク (TRADE MARK)	生産場所 (MANUFACTURING PLACE)
— AMP OR AMP	日本 (JAPAN)
—+ AMP OR AMP	中国 (CHINA(PRC))
— AMP OR AMP	韓国 (KOREA)



SEE TABLE 1

- ALL PARTS MEET RTI ELECTRICAL RATING OF 105C ACCORDING TO UL 1977
- PART 1-177901-5 MEET BELOW REQUIREMENT. MATERIAL: NYLON UL 94-V0 BLACK. MAXIMUM RATING TEMPERATURE 150C
- PART 5-177901-1 COMPLY WITH GLOW WIRE REQUIREMENT FOR PARTS OF NON-METALLIC MATERIAL SUPPORTING A CURRENT-CARRYING CONNECTION DETAILED IN IEC 60335-1, SECTION 30 (GWT)
- APPLICATION SPEC: 114-5175

- NOTES: 1. PRODUCT SPEC: 108-5410
2. APPLICABLE CONTACT P/N
REC CONTACT: 177915-C (*20- 16AWG)
177914-C (*26- 22AWG)
3. MATING CONN, P/N
CAP HSG: 177909-C (PANEL MOUNT)
TAB CONTACT: 177917-C (*20- 16AWG)
177916-C (*26- 22AWG)
4. APPLICABLE PLATE P/N: 177919-C
5. INSTRUCTION SHEET: 411-5638

ロックタイプI	黒色(NATURAL)	6	5-177901-1
ロックタイプII	青 (BLUE)	6	3-177901-6
ロックタイプII	黒色(NATURAL)	6	3-177901-1
ロックタイプ	ハウジング色調	極数	型番
LOCK TYPE	(HOUSING COLOR)	(Pos.)	(P/N)

黒 (BLACK)	6	1-177901-5	
青 (BLUE)	↑	-6	
黄 (YELLOW)	↑	-4	
赤 (RED)	↓	-2	
黒色(NATURAL)	6	177901-1	
ロックタイプ	ハウジング色調	極数	型番
LOCK TYPE	(HOUSING COLOR)	(Pos.)	(P/N)

R6	REVISED PER ECR-19-017851	SM	DZ	20NOV 39
R5	REVISED PER ECR-13-019881	A.Z	D.Z	23DEC12
R4	REVISED PER ECR-12-013854	A.Z	F.M	02JAN12
R3	REVISED PER ECR-12-010818	A.Z	F.M	14JUN12
R2	REVISED PER ECR-12-010382	A.Z	F.M	07JUN12
LTR	変更 (REVISION RECORD)	DR	CHK	DATE

線色範囲 (WIRE RANGE)	絶縁外径 (INSULATION DIA.)	名称 (NAME)	AMP POWER DOUBLE LOCK CONN.
mm ² (AWG)	mmφ	5極 3.96mmピッチ プラグハウジング (2列タイプ)	
材料 (MATERIAL)	仕上 (FINISH)	AMP POWER DOUBLE LOCK CONN. 3.96mm PITCH PLUG HOUSING 5 Pos (DBL ROW)	
S/S NYLON (ULB4Y-0)	—	一般公差	SIZE LOC 番号 (No.)
DR. M. SUZUKI	DE. M. SUZUKI	10mmφ: ±0.2	A3 J C-177901
CHK. M. SHINDO	APP. Y. KASHIWA	10mmφ以下: ±0.25	尺取 (SCALE)
		10mmφ以上: ±0.3	REV. R6
		10mmφ以下: ±0.3	SHEET 1 OF 1

PRINT DIST DIMENSIONS IN MM. DO NOT SCALE PRINT

CUSTOMER DRAWING

X-ON Electronics

Largest Supplier of Electrical and Electronic Components

Click to view similar products for [Headers & Wire Housings](#) category:

Click to view products by [TE Connectivity](#) manufacturer:

Other Similar products are found below :

[892-18-020-10-001101](#) [58102-G61-06LF](#) [582553-1](#) [0009485154](#) [009176003701906](#) [0050291907](#) [LY20-4P-DT1-P1E-BR](#) [02.125.8002.8](#)
[609-3404](#) [61062-3](#) [61082-181009](#) [622-3653LF](#) [63453-116](#) [636-1030](#) [636-1427](#) [636-3427](#) [636-4007](#) [641938-9](#) [641991-4](#) [644827-2](#) [65817-](#)
[010LF](#) [65817-015LF](#) [65863-015LF](#) [66207-023LF](#) [67095-007LF](#) [67601157](#) [68645-018](#) [68648-049](#) [70.362.1628.0](#) [70-4210](#) [70-4226B](#) [70-](#)
[4853B](#) [707-5020](#) [707-5028](#) [71.350.2428.0](#) [71918-208LF](#) [71961-016LF](#) [733-134](#) [733-162](#) [754199-000](#) [760-3052](#) [79531-3000](#) [FCN-](#)
[360C032-B](#) [FCN-367T-T012/H](#) [FCN-723D010/2](#) [80.063.4001.1](#) [800-90-010-10-002000](#) [801-43-002-10-013000](#) [801-43-006-10-002000](#)
[801-93-011-10-001000](#)