

THIS DRAWING IS UNPUBLISHED. RELEASED FOR PUBLICATION 20
 © COPYRIGHT 20 BY - ALL RIGHTS RESERVED.

REVISIONS					
P	LTR	DESCRIPTION	DATE	DWN	APVD
C2		REVISED PER ECR-14-001994	11FEB2014	A.Z	D.Z
D		REVISED PER ECR-19-009721	01JUL2019	M.G	D.Z

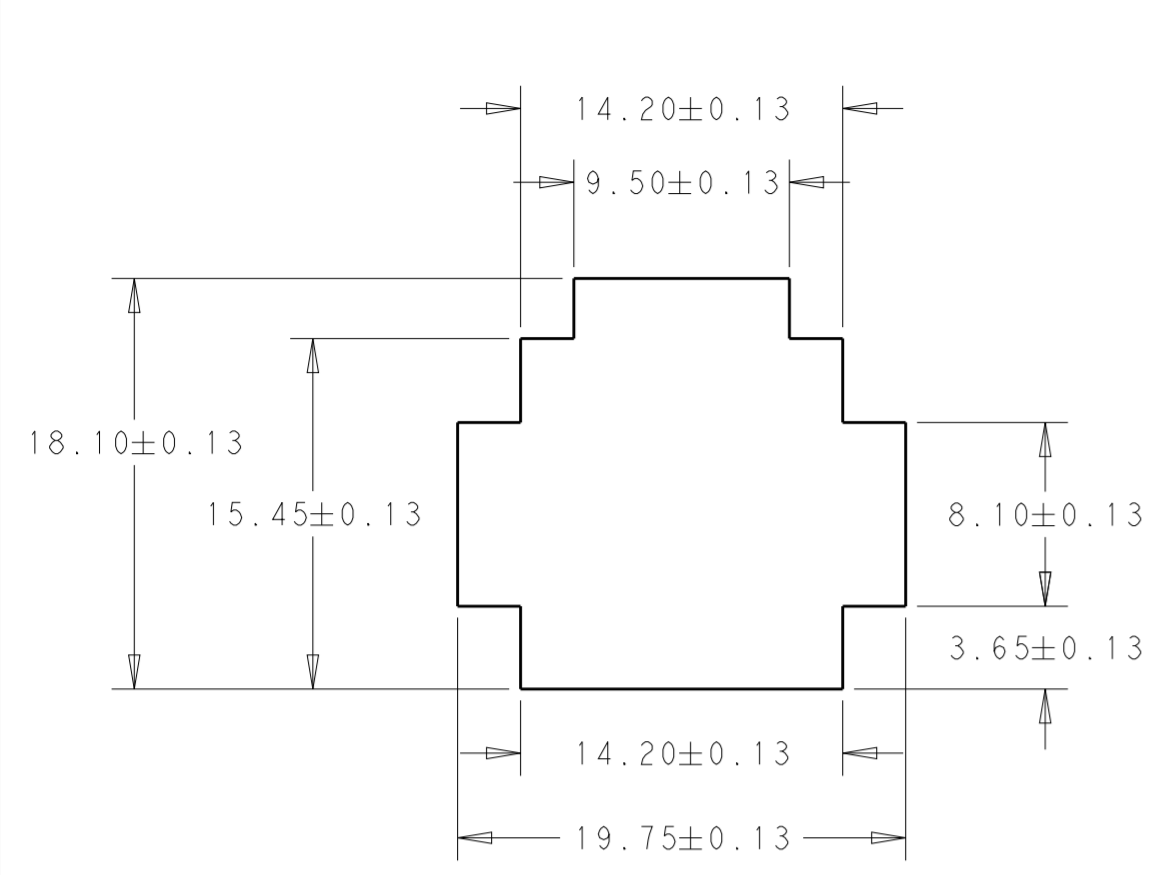
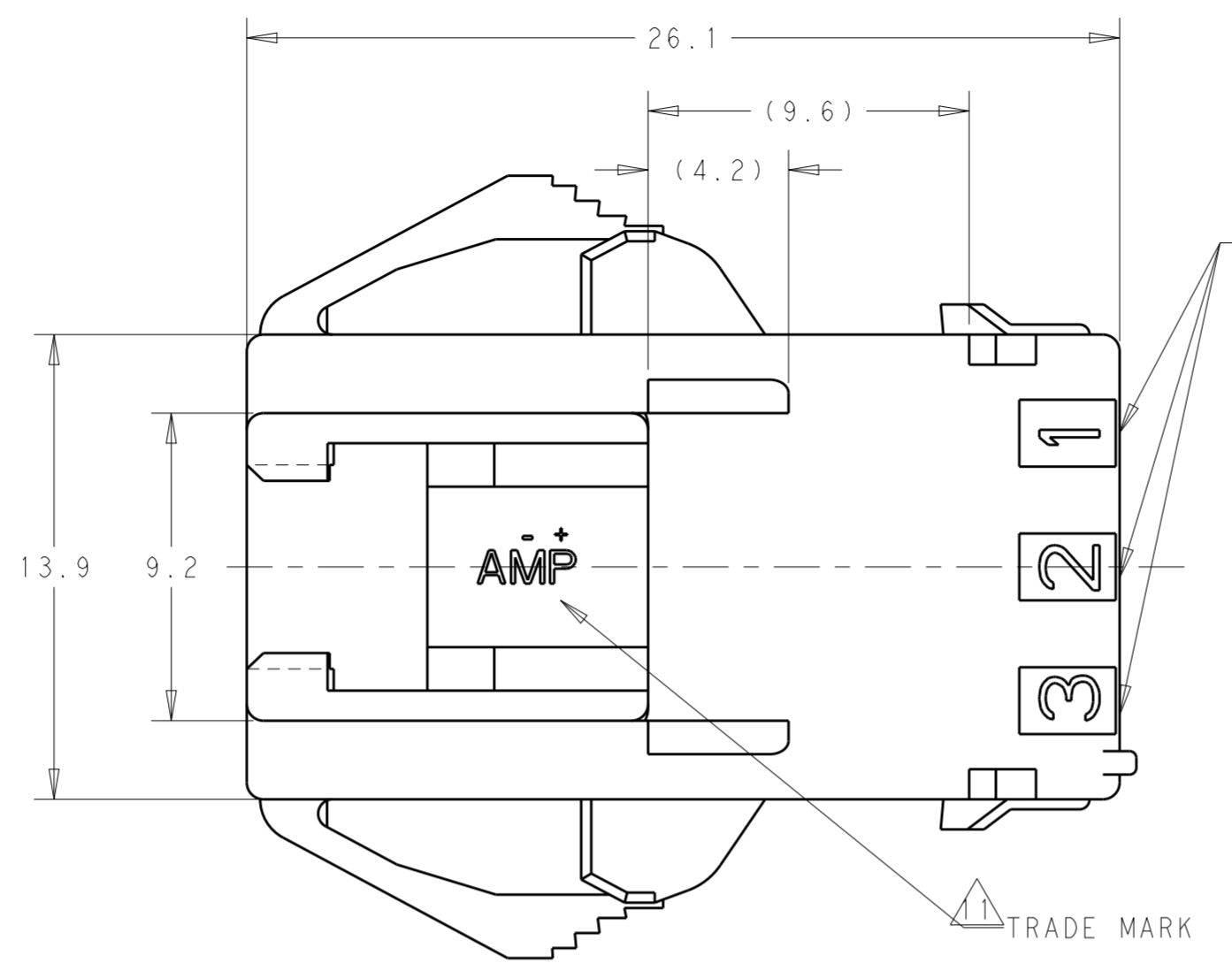
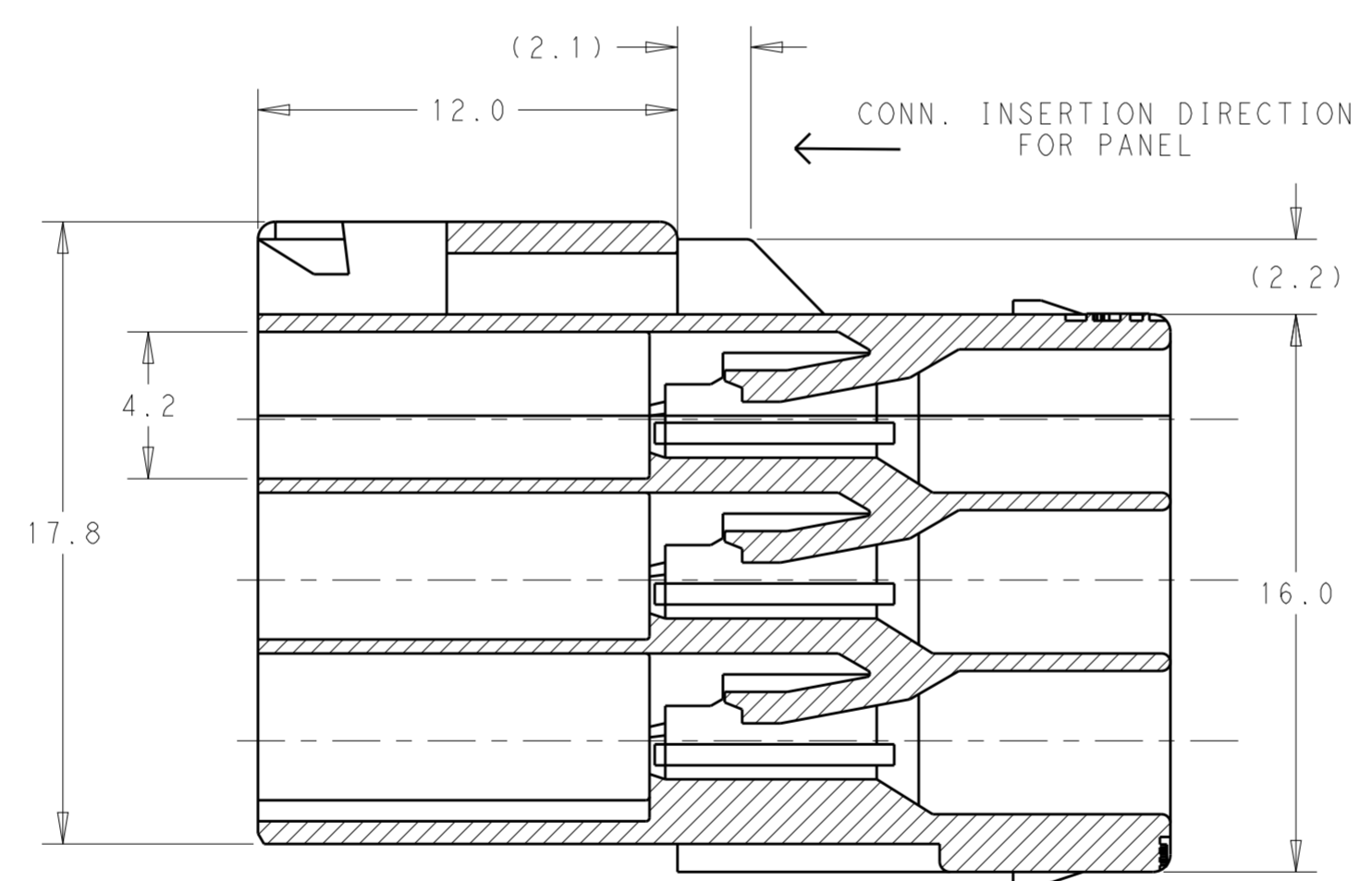
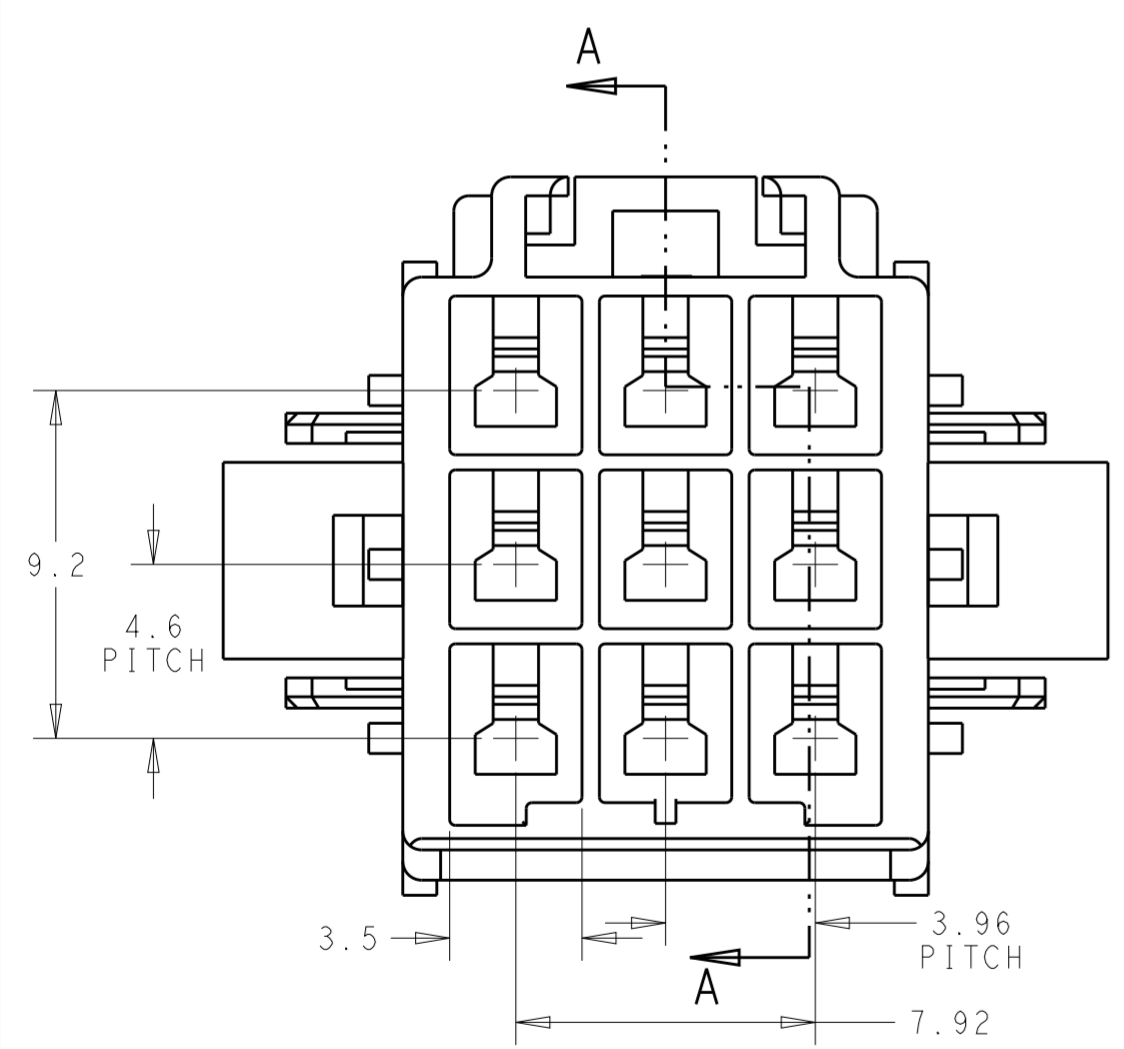


FIG 1
RECOMMENDED PANEL OPENING DIMENSION

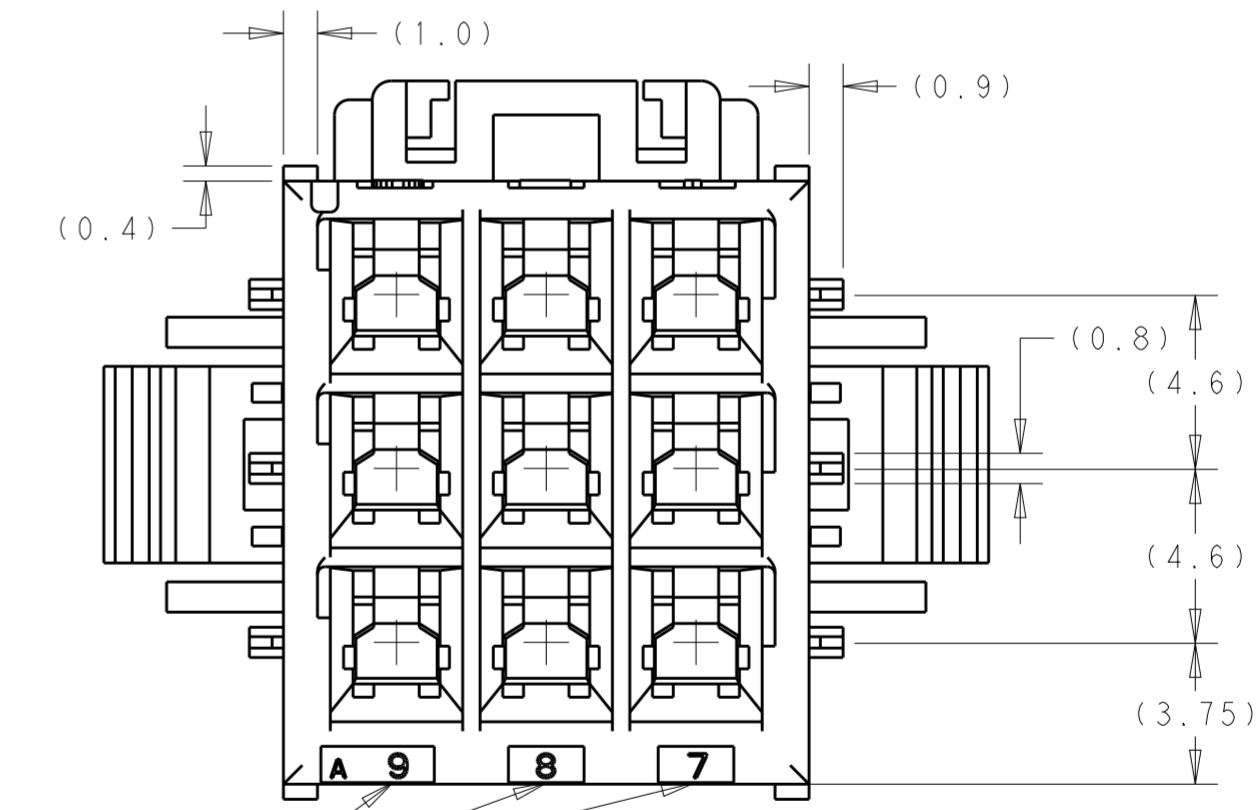


CIRCUIT NO.

- THIS HOUSING ACCEPTS TAB TERMINAL:
TAB CONTACT: 177917-□ (#20-#16AWG)
177916-□ (#26-#22AWG)
- MATING CONN. P/N
PLUG HSG: □-177903-□ (#20-#16AWG)
REC CONTACT: 177915-□ (#20-#16AWG)
177914-□ (#26-#22AWG)
- APPLICABLE PLATE P/N: 177919-□
- INSTRUCTION SHEET: 411-5638
- APPLICABLE PANEL THICKNESS: 0.8~2.0(SEE FIG 1)
- INSERT CONN. FROM PRESS DIRECTION SIDE FOR METAL PANEL.
- EDGE OF THICKNESS WAY MUST NOT ROUND FOR MOLDED PANEL.
- ALL PARTS MEET RTI ELECTRICAL RATING OF 105°C ACCORDING TO UL 1977.
- MATERIAL: 6/6 NYLON UL94V-0
- PART 5-177911-1 COMPLY WITH GLOW WIRE REQUIREMENT FOR PARTS OF NON-METALLIC MATERIAL SUPPORTING A CURRENT-CARRYING CONNECTION DETAILED IN IEC 60335-1, SECTION 30(GWT)
- SEE TABLE 1
- GENERAL TOLERANCE:
<10:±0.2
10~30:±0.25,
ANGLE:±3°



SECTION A-A



CIRCUIT NO.

9	NATURAL	5-177911-1
9	BLUE	177911-6
9	YELLOW	177911-4
9	NATURAL	177911-1
POS	COLOR	PART NUMBER

TABLE 1

TRADE MARK	MANUFACTURING PLACE
—AMP OR AMP	JAPAN
—+AMP OR AMP	CHINA
+AMP OR AMP	KOREA

THIS DRAWING IS A CONTROLLED DOCUMENT.

DWN	M. SUZUKI	09SEPT1993
CHK	M. SHINDO	09SEPT1993
APVD	Y. KASHIWA	09SEPT1993

PRODUCT SPEC: 108-5410
 APPLICATION SPEC: 114-5175
 WEIGHT: -

STE TE Connectivity

NAME: AMP POWER DBL LOCK CONN, 3.96mm PITCH (TRIPLE ROW) 9 Pos CAP HOUSING (PANEL MOUNT)

SIZE: A2 CAGE CODE: 00779 DRAWING NO: C-177911 RESTRICTED TO: -

CUSTOMER DRAWING SCALE: 5:1 SHEET: 1 OF 1 REV: D

X-ON Electronics

Largest Supplier of Electrical and Electronic Components

Click to view similar products for [Headers & Wire Housings](#) category:

Click to view products by [TE Connectivity](#) manufacturer:

Other Similar products are found below :

[892-18-020-10-001101](#) [58102-G61-06LF](#) [582553-1](#) [0009485154](#) [009176003701906](#) [0050291907](#) [LY20-4P-DT1-P1E-BR](#) [02.125.8002.8](#)
[609-3404](#) [61062-3](#) [61082-181009](#) [622-3653LF](#) [63453-116](#) [636-1030](#) [636-1427](#) [636-3427](#) [636-4007](#) [641938-9](#) [641991-4](#) [644827-2](#) [65817-010LF](#) [65817-015LF](#) [65863-015LF](#) [66207-023LF](#) [67095-007LF](#) [67601157](#) [68645-018](#) [68648-049](#) [70.362.1628.0](#) [70-4210](#) [70-4226B](#) [70-4853B](#) [707-5020](#) [707-5028](#) [71.350.2428.0](#) [71918-208LF](#) [71961-016LF](#) [733-134](#) [733-162](#) [754199-000](#) [760-3052](#) [787-8014-00](#) [79531-3000](#)
[FCN-360C032-B](#) [FCN-367T-T012/H](#) [FCN-723D010/2](#) [80.063.4001.1](#) [800-90-001-10-001000](#) [800-90-010-10-002000](#) [801-43-002-10-013000](#)