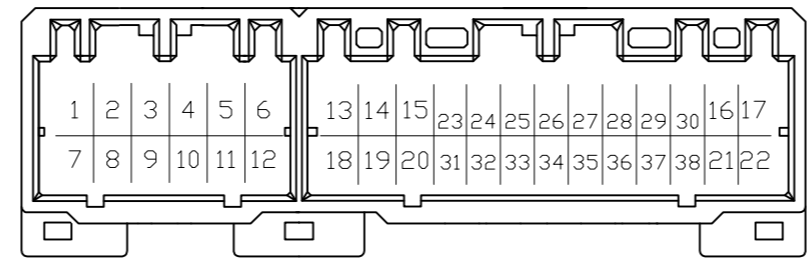
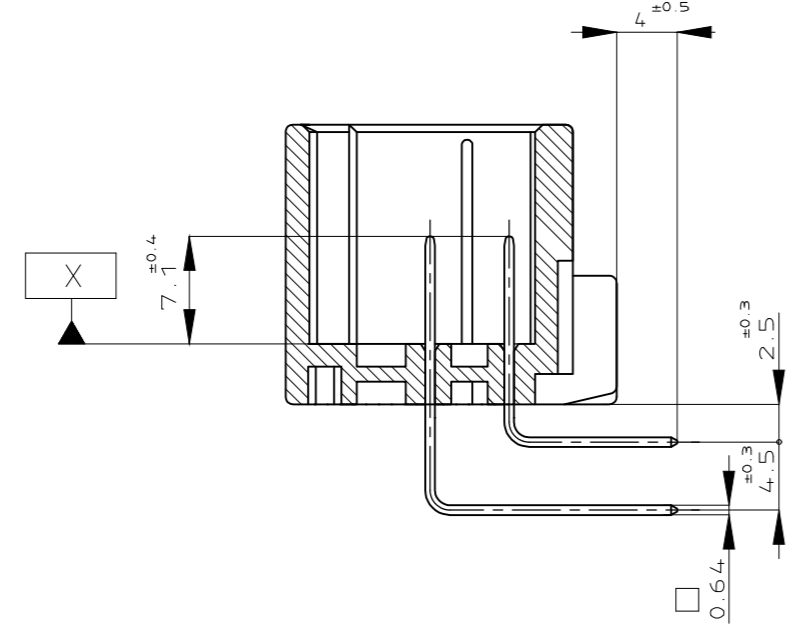
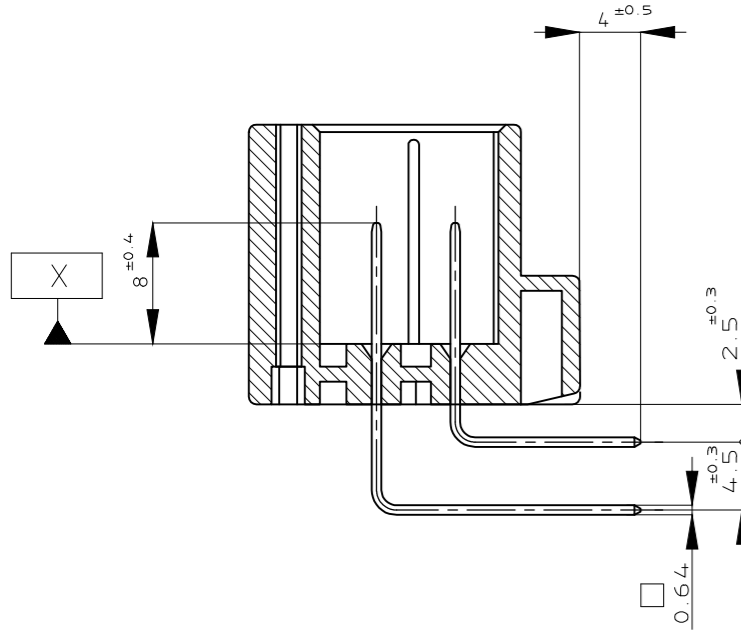
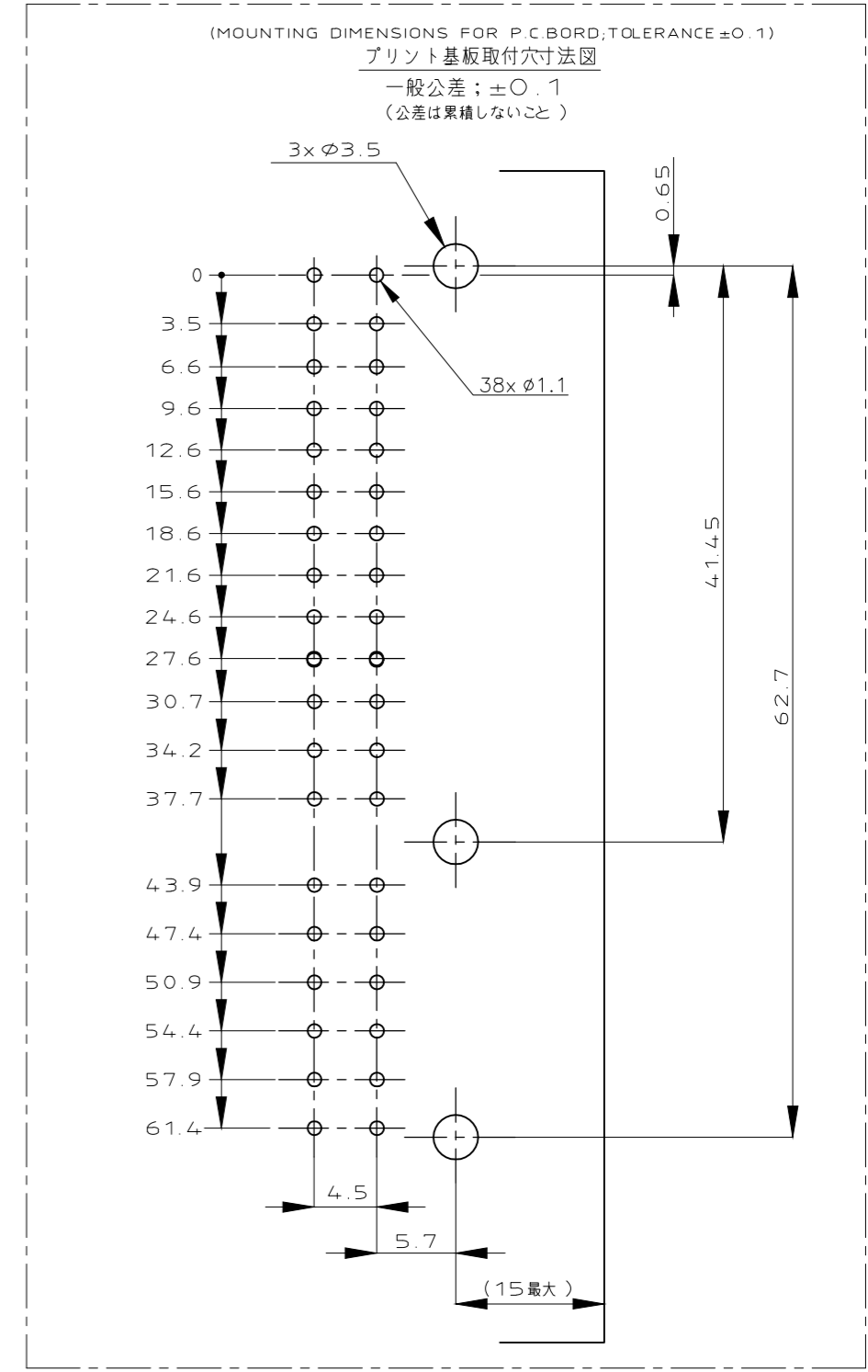
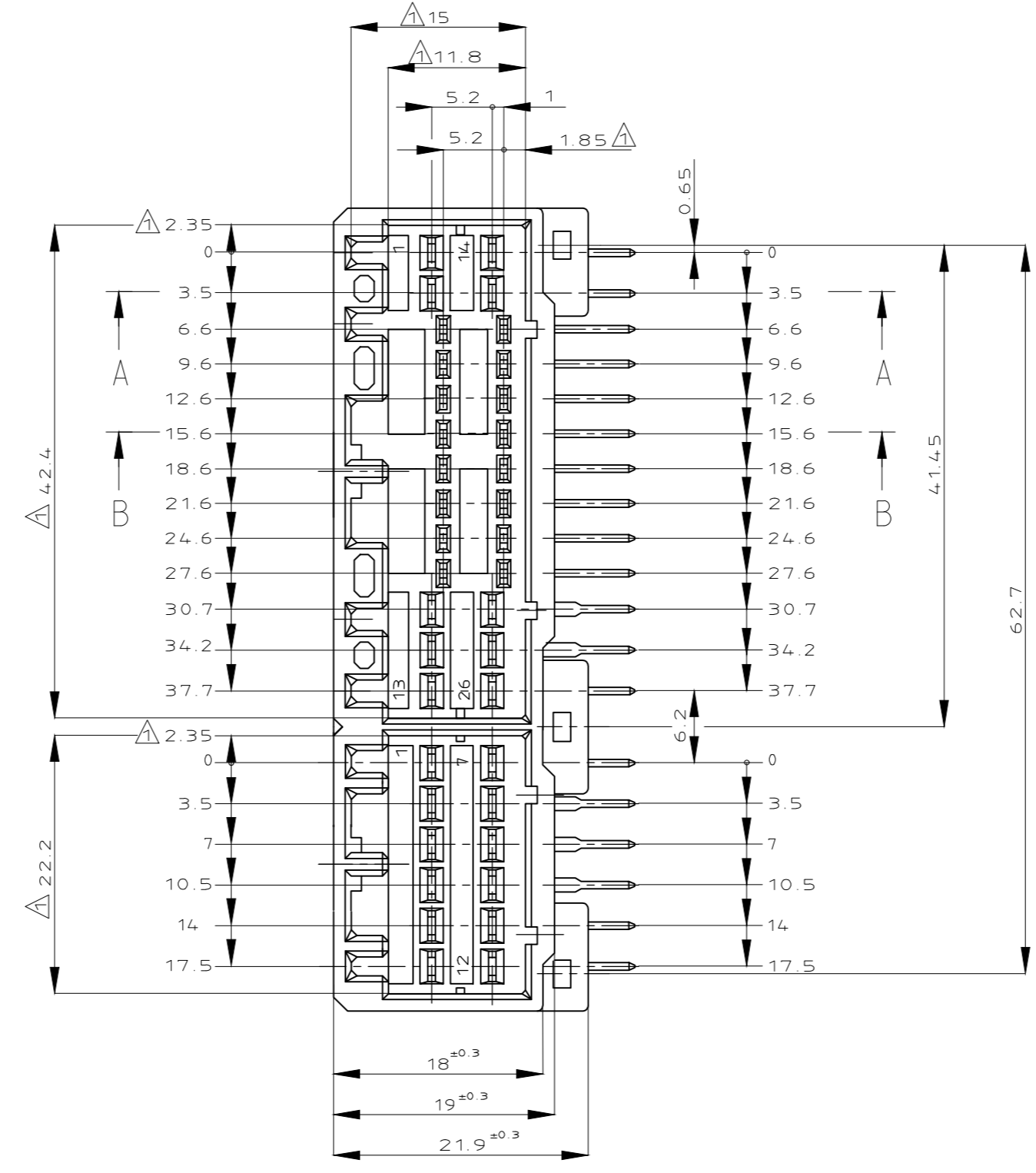
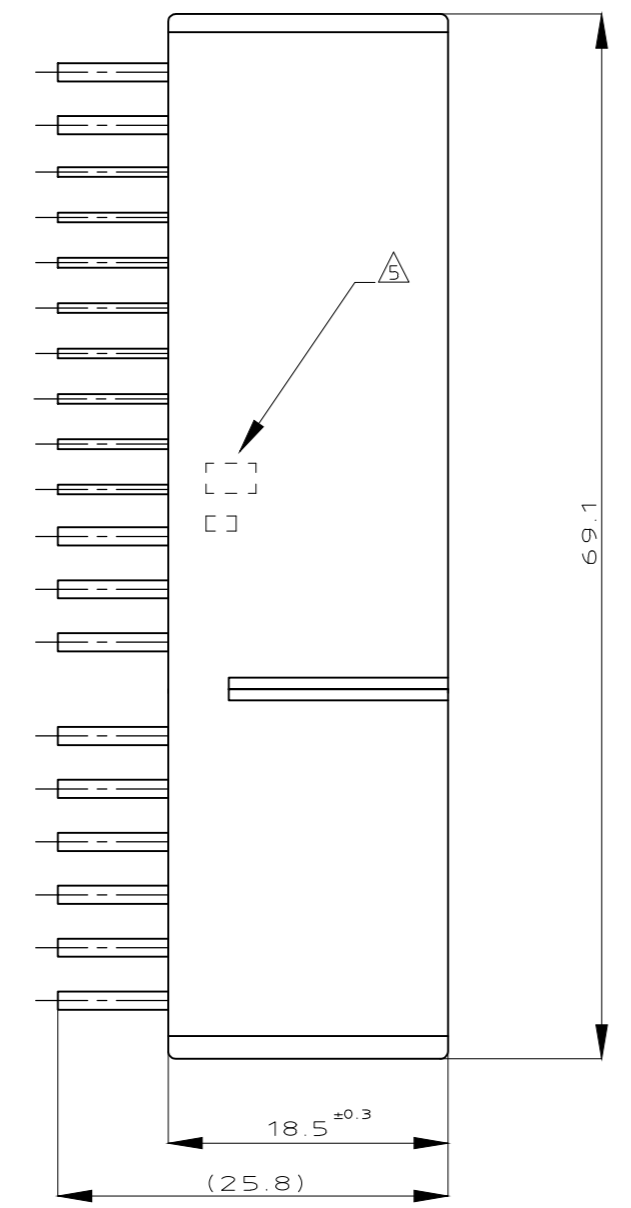
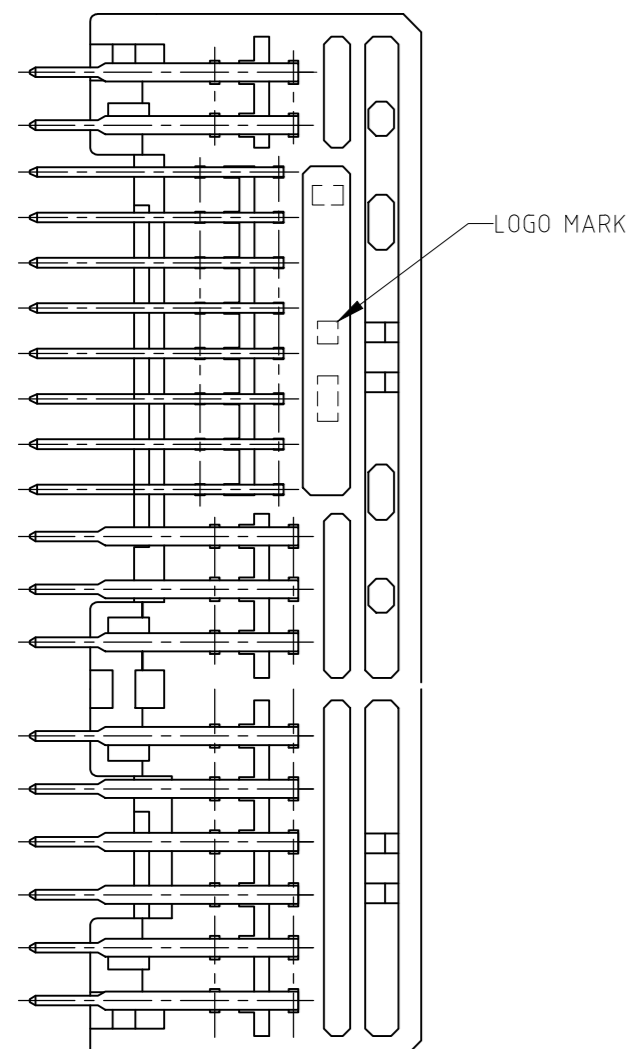


REVISIONS					
P	LTR	DESCRIPTION	DATE	DWN	APVD
J5		OBSOLETE PN 178093-3 & 4-178093-1	11NOV2020	PSJ	TM



- △ X面から2mmの範囲で測定
- 2 嵌合相手ハウジング型: 174516,175442,917992,917978
- 3 推奨取付ねじ  
JIS B1115,B1122 タッピングねじ, なべ2種  
呼び径3, 長さ6mm以下 (締付けトルク: 0.314N・m以下)
- 4 適用製品規格番号: 108-5280, 108-5342
- △ 適用製品型番のプリフィックス及びIDマークをカラーホットマークにて表示
- △ 回路番号: 下記参照のこと  
パワー回路 ① ~ ②  
シグナル回路 ③ ~ ③⑧

- △ MUST BE KEPT BETWEEN X AND 2
- 2 THE MATING PLUG HSG. PART NUMBER: 174516,175442,917992,917978
- 3 RECOMMENDED MOUNTING SCREW  
3mmDIA,6mmLENGTH(MAX.)PAN HEAD,CLASS 2  
TAPPING SCREW SPECIFIED IN JIS B1115,B1122  
(TIGHTENING TORQUE:0.314N・m MAX.)
- 4 APPLICABLE PRODUCT .SPEC NO.108-5280, 108-5342
- △ INDICATED PREFIX AND ID MARK OF PRODUCT P/N BY HOT MARK
- △ CIRCUIT NUMBER POWER CIRCUIT NO.①~②  
SIGNAL CIRCUIT NO.③~③⑧

MARKING	PRE-TIN	SELECTIVE-TIN	CONTACT SIDE	POWER CIRCUIT NO.	SIGNAL CIRCUIT NO.	HOUSING COLOR	P/N
54	PRE-TIN × 33	SELECTIVE-TIN [MATTE] SELECTIVE GOLD × 5	(16) (17)	(23) (28) (30)	NATURAL	自然色	4-5178093-1
53	PRE-TIN × 28	SELECTIVE-TIN [MATTE] SELECTIVE GOLD × 10	(4) (5) (10) (11)	(23) (24) (29) (31) (32) (38)	NATURAL	自然色	3-5178093-1
52	PRE-TIN × 30	SELECTIVE-TIN [MATTE] SELECTIVE GOLD × 8	(4) (5) (10) (11)	(23) (24) (31) (32)	NATURAL	自然色	2-5178093-1
—	PRE-TIN × 18	SELECTIVE-TIN [MATTE] SELECTIVE GOLD × 20	(7) (8) (9) (10) (11) (12)	(23) ~ (28) (30) (31) ~ (36) (38)	NATURAL	自然色	5178093-3
4	PRE-TIN × 33	SELECTIVE-TIN [MATTE] SELECTIVE GOLD × 5	(16) (17)	(23) (28) (30)	NATURAL	自然色	4-178093-1
3	PRE-TIN × 28	SELECTIVE-TIN [MATTE] SELECTIVE GOLD × 10	(4) (5) (10) (11)	(23) (24) (29) (31) (32) (38)	BLACK	黒色	3-178093-2
3	PRE-TIN × 28	SELECTIVE-TIN [MATTE] SELECTIVE GOLD × 10	(4) (5) (10) (11)	(23) (24) (29) (31) (32) (38)	NATURAL	自然色	3-178093-1
2	PRE-TIN × 30	SELECTIVE-TIN [MATTE] SELECTIVE GOLD × 8	(4) (5) (10) (11)	(23) (24) (31) (32)	NATURAL	自然色	2-178093-1
0	PRE-TIN × 38	SELECTIVE-TIN [MATTE] SELECTIVE GOLD × 5	(16) (17)	(23) (28) (30)	ORANGE	橙色	178093-8
—	PRE-TIN × 18	SELECTIVE-TIN [MATTE] SELECTIVE GOLD × 20	(7) (8) (9) (10) (11) (12)	(23) ~ (28) (30) (31) ~ (36) (38)	NATURAL	自然色	178093-3
0	PRE-TIN × 38	SELECTIVE-TIN [MATTE] SELECTIVE GOLD × 10	(4) (5) (10) (11)	(23) (24) (29) (31) (32) (38)	BLACK	黒色	178093-2
0	PRE-TIN × 38	SELECTIVE-TIN [MATTE] SELECTIVE GOLD × 8	(4) (5) (10) (11)	(23) (24) (31) (32)	NATURAL	自然色	178093-1
MARKING	SOLDERING SIDE 半田付け部	CONTACT SIDE 接触部側	POWER CIRCUIT NO. パワー回路	SIGNAL CIRCUIT NO. シグナル回路	HOUSING COLOR ハウジング色	P/N	
△	CONTACT FINISH コンタクト仕上げ		CIRCUIT NO. OF GOLD PLATED CONTACT 全メッキ端子使用回路番号				

THIS DRAWING IS A CONTROLLED DOCUMENT.

DIMENSIONS: 単位: 寸 mm

TOLERANCES UNLESS OTHERWISE SPECIFIED: 一般公差

0 PLC ±  
1 PLC ±  
2 PLC ±  
3 PLC ±  
4 PLC ±  
ANGLES ±

MATERIAL: HOUSING: PBT  
ハウジング  
CONTACT: BRASS  
コンタクト

FINISH: 仕上

SEE TABLE

DWN  
CHK  
APVD

PRODUCT SPEC  
製品規格  
108-5280

APPLICATION SPEC  
取付適用規格  
—

WEIGHT: 19.4 g

CUSTOMER DRAWING

TE Connectivity

NAME: 38Pos.CAP HOUSING ASS'Y  
.040/.070 HYBRID I/O CONN.(NON FLANGE TYPE)

SIZE: A2 CAGE CODE: 00779 DRAWING NO: C=178093

RESTRICTED TO

SCALE: 2:1 SHEET: 1 of 1 REV: J5

## X-ON Electronics

Largest Supplier of Electrical and Electronic Components

*Click to view similar products for [Automotive Connectors](#) category:*

*Click to view products by [TE Connectivity](#) manufacturer:*

Other Similar products are found below :

[003-018-000](#) [600858](#) [60403001](#) [60993906-B](#) [60993913-B](#) [629515004020001](#) [M83723/71R1808N L/C](#) [M902-2131](#) [M902-2161](#) [M902-2344](#)  
[72.330.1035.1](#) [73.353.4028.0](#) [F118010](#) [F119300-B](#) [F132210](#) [F166900](#) [F180100](#) [F258300](#) [F258300-B](#) [F294300-B](#) [F339100](#) [F339700](#)  
[F358300-B](#) [F374110](#) [F407400](#) [F412210](#) [F444110](#) [F487000](#) [F495100](#) [F500900-B](#) [F509500B-B](#) [770444-1](#) [827153-1](#) [881735-1](#)  
[8N1515-32-24P](#) [9-1326729-8](#) [925467-1](#) [925474-1](#) [928905-1](#) [936398-2](#) [964562-4](#) [964731-2](#) [968782-1](#) [GT17SA-8DS-HU](#) [GT17VS-10DP-](#)  
[5.2CF](#) [98315-0001](#) [98315-0010](#) [98891-1012](#) [98895-2014](#) [98936-1039](#)