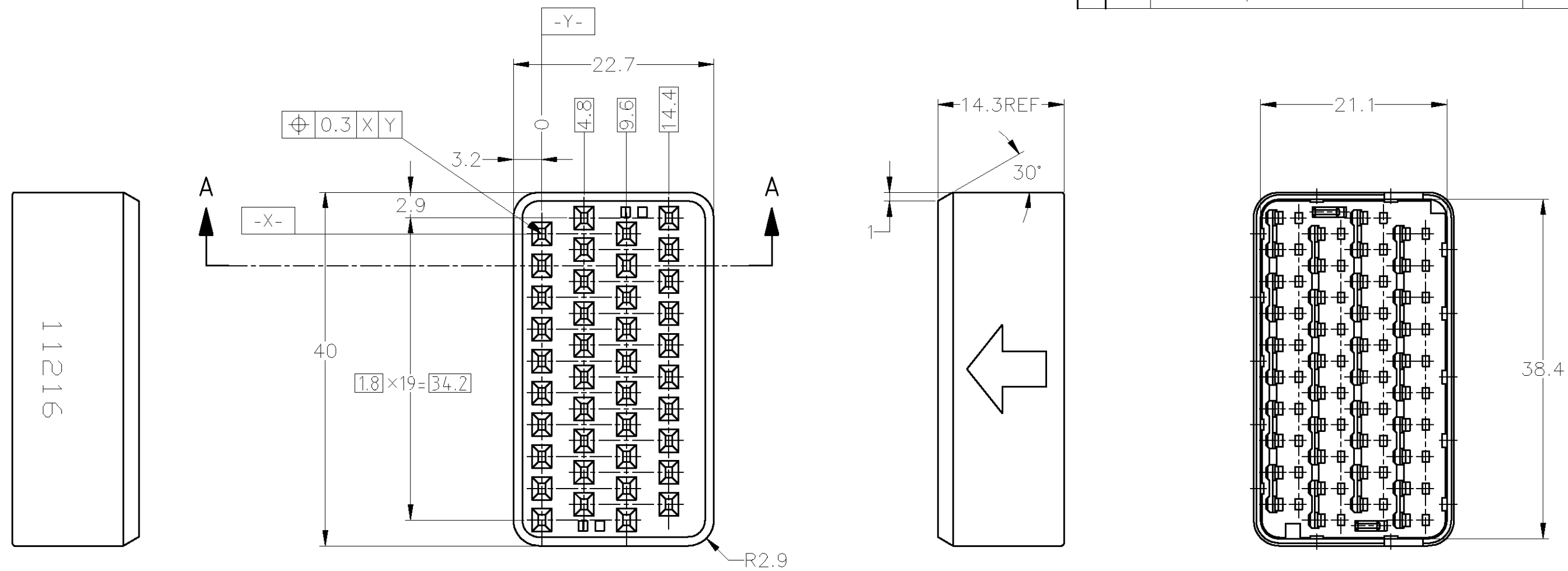


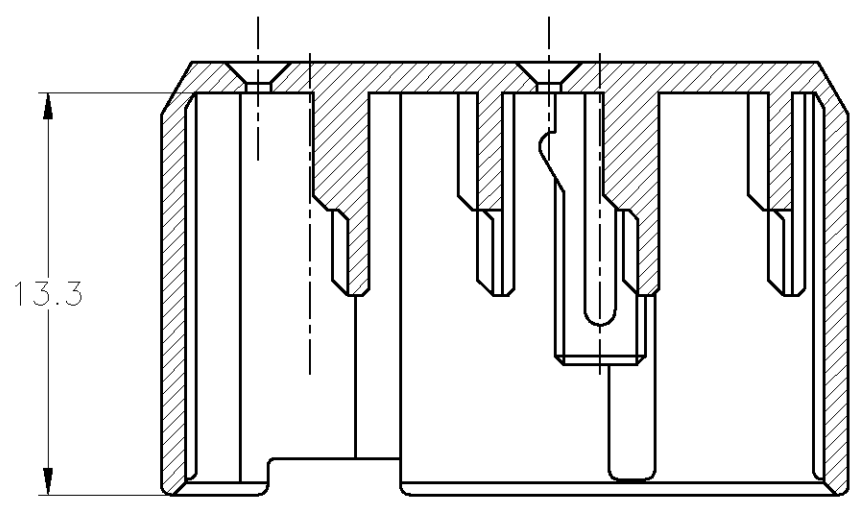
THIS DRAWING IS UNPUBLISHED. RELEASED FOR PUBLICATION
 © COPYRIGHT - By Tyco Electronics Japan G.K. ALL RIGHTS RESERVED.

LOC	DIST	REVISIONS			
P	LTR	DESCRIPTION	DATE	DWN	APVD
J	-	01 REDRAWN W/CHANGE	ECR-11-020190	040CT11	TS KB



1. INSERT DBL LOCK PLATE IN PLUG HOUSING.
(PN; 178409, 178411)
1. 本品はプラグハウジング型番178409, 178411に装着される。

YELLOW	178413-7
COLOR	PART NUMBER



A-A
SCALE 4:1

TOLERANCES UNLESS OTHERWISE SPECIFIED:
 一般公差

10 ≥	: ±0.2
30 ≥	> 10: ±0.25
100 ≥	> 30: ±0.3
ANGLE: ±3°	

THIS DRAWING IS A CONTROLLED DOCUMENT.		DWN T.SHINOHARA 040CT11	STE TE Connectivity		
DIMENSIONS: mm		CHK K.BETSUI 040CT11			
TOLERANCES UNLESS OTHERWISE SPECIFIED:		APVD K.BETSUI 040CT11	NAME 040 SERIES SEALED PAIR MATE CONNECTOR DOUBLE LOCK PLATE		
0 PLC ± -		PRODUCT SPEC 108-5365	SIZE CAGE CODE DRAWING NO RESTRICTED TO		
1 PLC ± -		APPLICATION SPEC -	A3 00779 C-178413		
2 PLC ± -		WEIGHT 3.8 g	SCALE 2:1 SHEET 1 OF 1 REV 01		
3 PLC ± -		CUSTOMER DRAWING			
4 PLC ± -					
ANGLES ± -					
FINISH -					
MATERIAL PBT					

X-ON Electronics

Largest Supplier of Electrical and Electronic Components

Click to view similar products for [Automotive Connectors](#) category:

Click to view products by [TE Connectivity](#) manufacturer:

Other Similar products are found below :

[003-018-000](#) [60403001](#) [60993906-B](#) [M902-2131](#) [M902-2161](#) [M902-2344](#) [72.330.1035.1](#) [73.353.4028.0](#) [F119300-B](#) [F166900](#) [F258300-B](#)
[F358300-B](#) [F407400](#) [F444110](#) [F487000](#) [F509500B-B](#) [827153-1](#) [8N1515-32-24P](#) [9-1326729-8](#) [925474-1](#) [928905-1](#) [964562-4](#) [968782-1](#)
[GT17SA-8DS-HU](#) [98891-1012](#) [98947-1016](#) [12004147](#) [12004475-L](#) [12010290](#) [12010309-B](#) [12015454](#) [12020219-B](#) [12041318-B](#) [12052225-](#)
[L](#) [12052466](#) [12064869](#) [12004327-B](#) [12015308](#) [12015384](#) [12015909](#) [1-21030-1](#) [12041254](#) [12041318](#) [12047946-B](#) [12047957](#) [12047957-L](#)
[12059473](#) [12066261](#) [12110546](#) [12110546-B](#)