

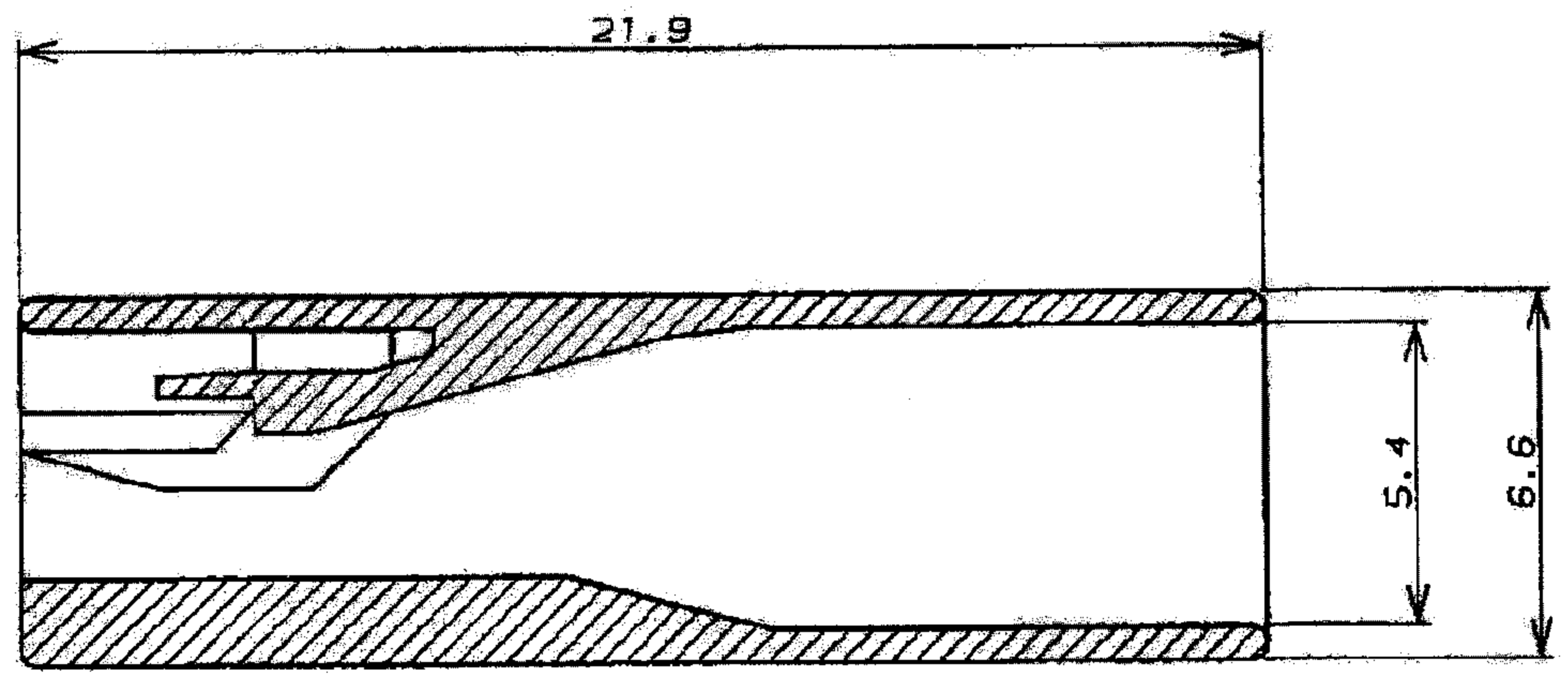
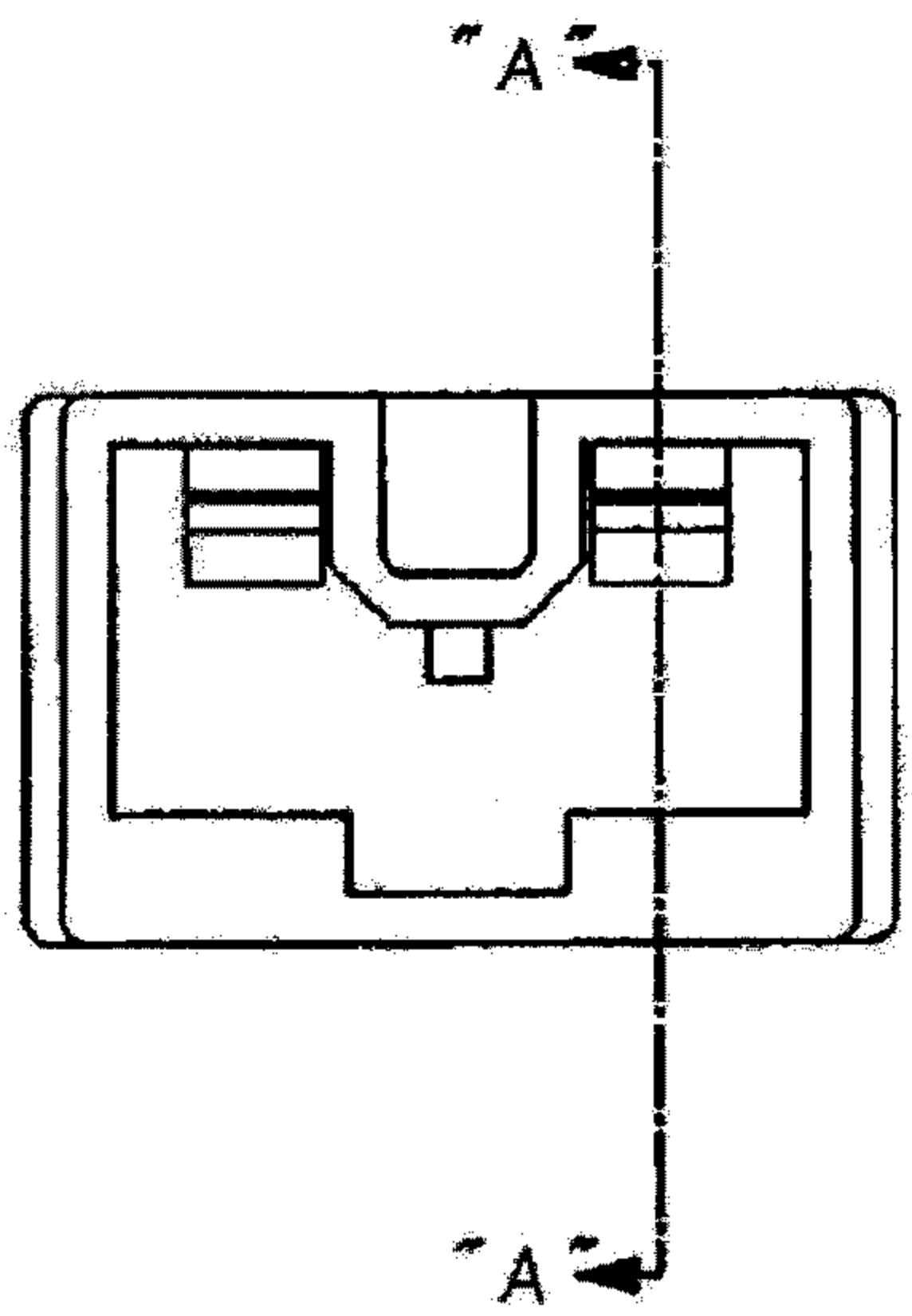
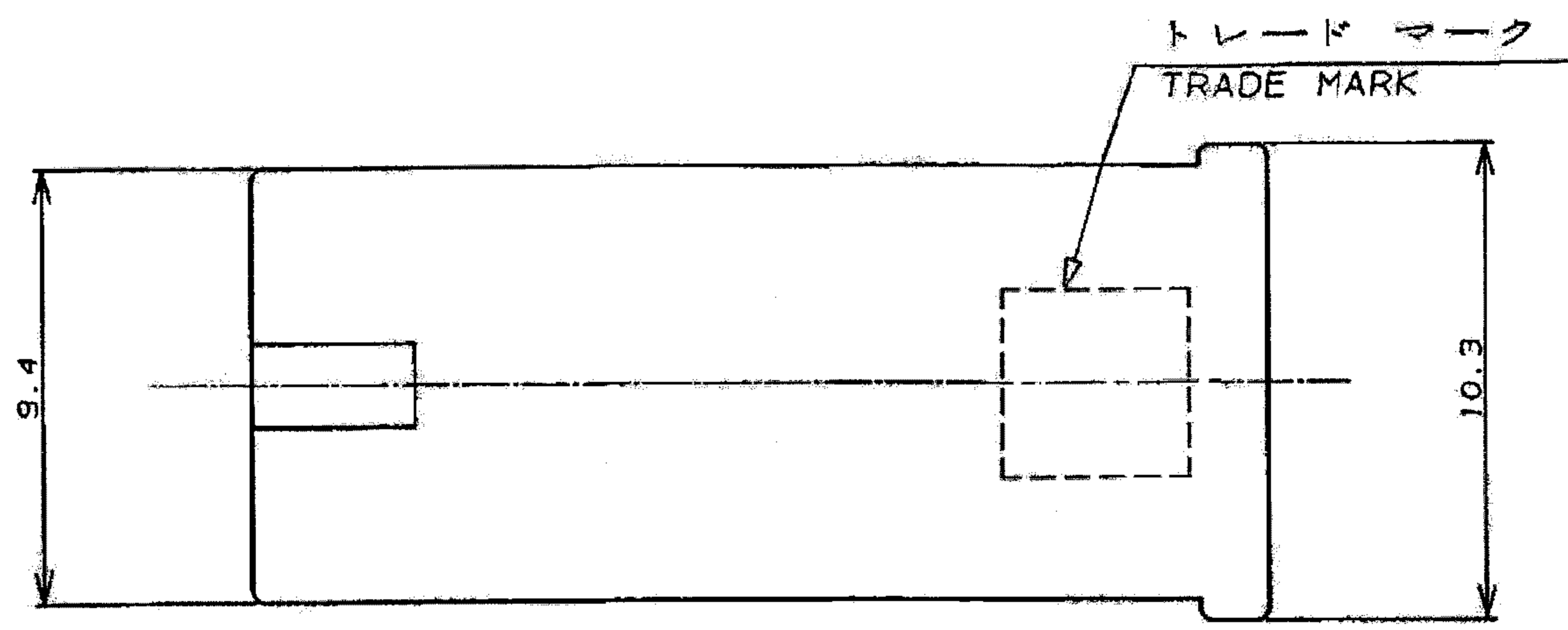
NUMBER 179970



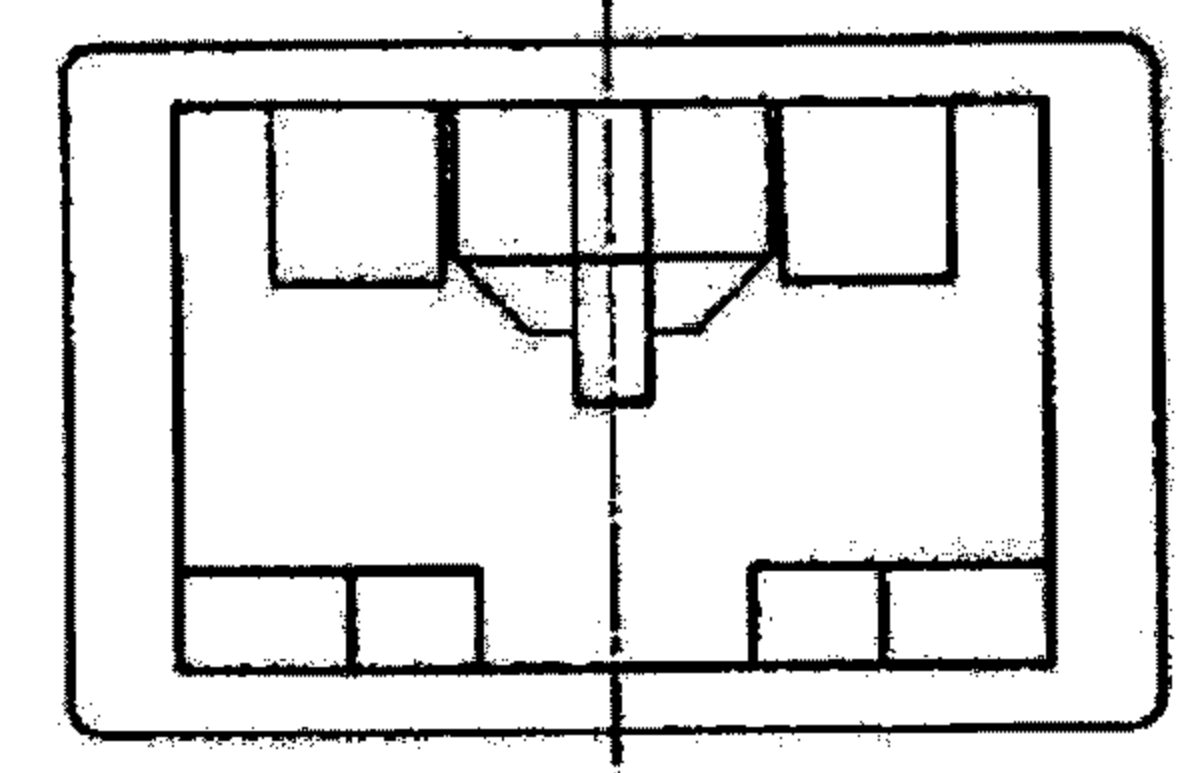
METRIC

PRINT DIM. IN MM. DO NOT SCALE PRINT

PRINT DIST



断面 "A"- "A"
SECT.



注記:

1. 適用製品規格 : 108-5437
2. 適用コンタクト型番 : 179973-0 , 179974-0 , 179975-0
4. 取扱説明書 : 411-5691

NOTES:

1. PRODUCT SPEC; 108-5437
 2. APPLICABLE CONTACT P/N 179973-0 , 179974-0 , 179975-0
 3. INSTRUCTION SHEET; 411-5691
- △ COMPLY WITH GLOW WIRE REQUIREMENT FOR PARTS OF NON-METALLIC MATERIAL SUPPORTING A CURRENT - CARRYING CONNECTION DETAILED IN IEC 60335-1, SECTION 30 (GWT)
- △ PRELIMINARY- NOT FOR PRODUCTION

自然色 (NATURAL)	△△7-179970-1
黒 (BLACK)	179970-9
青 (BLUE)	179970-6
黄 (YELLOW)	179970-4
赤 (RED)	179970-2
自然色 (NATURAL)	179970-1
色調 (COLOR)	型番 (P/N)

B5	REVISED ECR-13-000284	L.L	F.M	08JAN 2013
B4	REVISED ECR-12-018436	L.L	F.M	23OCT 2012
B3	REVISED	K.S	N.Y	15JUN 2012
LTR	変更 (REVISION RECORD)	DR	CHK	DATE

TE TE Connectivity		
絶縁電線径範囲 (WIRE RANGE) mm ² (AWG -)	絶縁外径 (INSULATION DIA.) 4.3 MAX mmφ	名称 (NAME) "250" SERIES POSITIVE LOCK-EX-II 1Pos REC HSG "250"シリーズ・ポジティブロック-EX-II極リセ・ハウジング
材料 (MATERIAL) 6/6ナイロン 6/6NYLON	仕上 (FINISH)	一般公差 (GENERAL TOLERANCES) 10mm以下 : ±0.2 10mm以上 30mm以下 : ±0.25 30mm以上 100mm以下 : ±0.3 角 度 : ±3°
DR. 30. JUN. '94 N. NAGASHIMA	DE. 4. JUL. '94 M. SUZUKI	LOD 番号 (No.) 179970
CHK. 4. JUL. '94 M. SHINDO	APP. 4. JUL. '94 Y. KASHIWA	尺度 (SCALE) 5:1
		REV. B5 SHEET 1 OF 1

(CUSTOMER DRAWING) 参 考 面

X-ON Electronics

Largest Supplier of Electrical and Electronic Components

Click to view similar products for [Terminals](#) category:

Click to view products by [TE Connectivity](#) manufacturer:

Other Similar products are found below :

[00-054007-01074-6](#) [00-054007-70206-1](#) [00-054007-70210-8](#) [00-054007-70217-7](#) [00-054007-70226-9](#) [00-054007-70228-3](#) [00-054007-70248-1](#) [00-054007-70256-6](#) [00-054007-70301-3](#) [00-054007-70316-7](#) [0-0320562-0](#) [00-054007-49560-4](#) [00-054007-70209-2](#) [00-054007-70225-2](#) [00-054007-70227-6](#) [00-054007-70231-3](#) [00-054007-70241-2](#) [00-054007-70242-9](#) [00-054007-70244-3](#) [00-054007-70246-7](#) [00-054007-70263-4](#) [00-054007-70288-7](#) [00-054007-70290-0](#) [00-054007-70300-6](#) [00-054007-70304-4](#) [01-2065-1-0216](#) [01-2900-1-04412](#) [00581P0075](#) [600TS-10](#) [60205-1](#) [604200-1](#) [605601-1](#) [60598-1-CUT-TAPE](#) [61314-6-C](#) [61810-3](#) [61-S](#) [61-SN](#) [626-0194](#) [62-NBM-A](#) [62-SN](#) [62-SP](#) [63-S](#) [640179-1](#) [M55155/059I03](#) [M55155/079C01](#) [M55155/099H02](#) [M55155/109H01](#) [M55155/109H02](#) [M55155/12XH05](#) [M55155/16XH02](#)