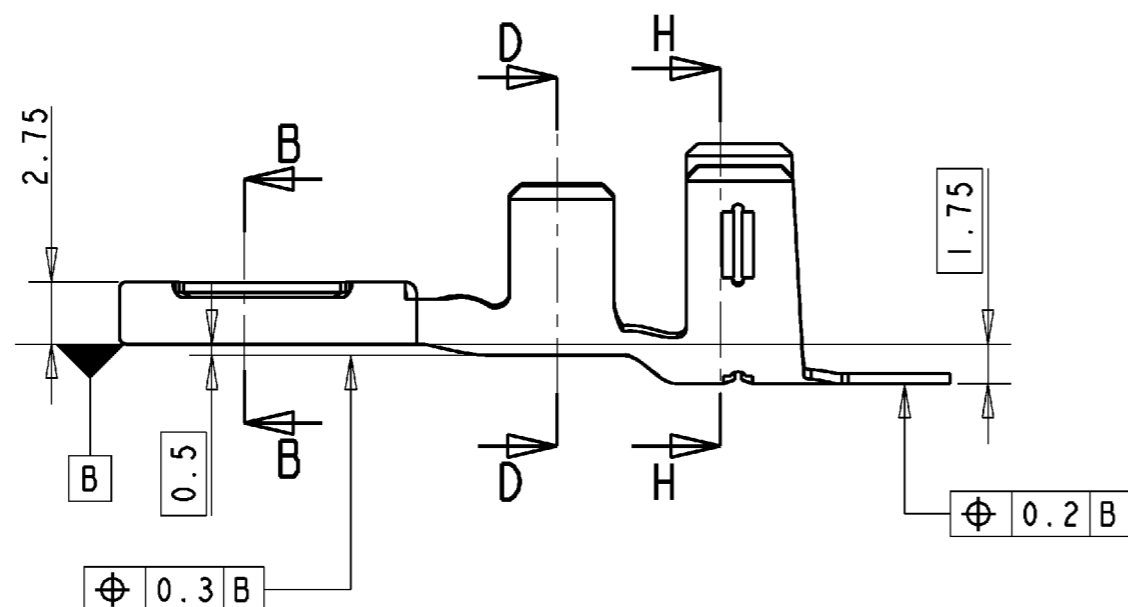


| LOC | DIST | REVISIONS | | | | | |
|-----|------|-----------|-----|-------------|-----------|-----|------|
| F | 00 | P | LTR | DESCRIPTION | DATE | DWN | APVD |
| | | A | | FIRST ISSUE | 06MAY2008 | FSf | JDr |

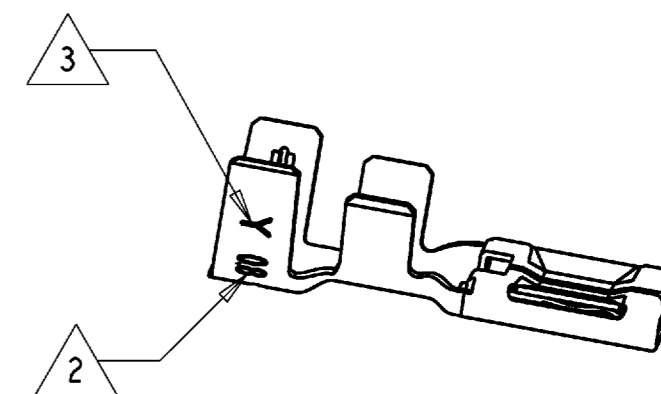
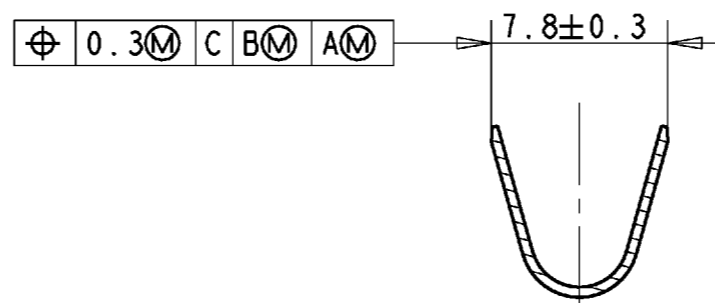
COUPE B-B
SECTION B-B



0.5±0.2
 REGLAGES EN FONCTION DES FORCES D'INSERTION SUR CALIBRE
 SET IN FUNCTION OF THE INSERTION FORCE ON CHECK TAB

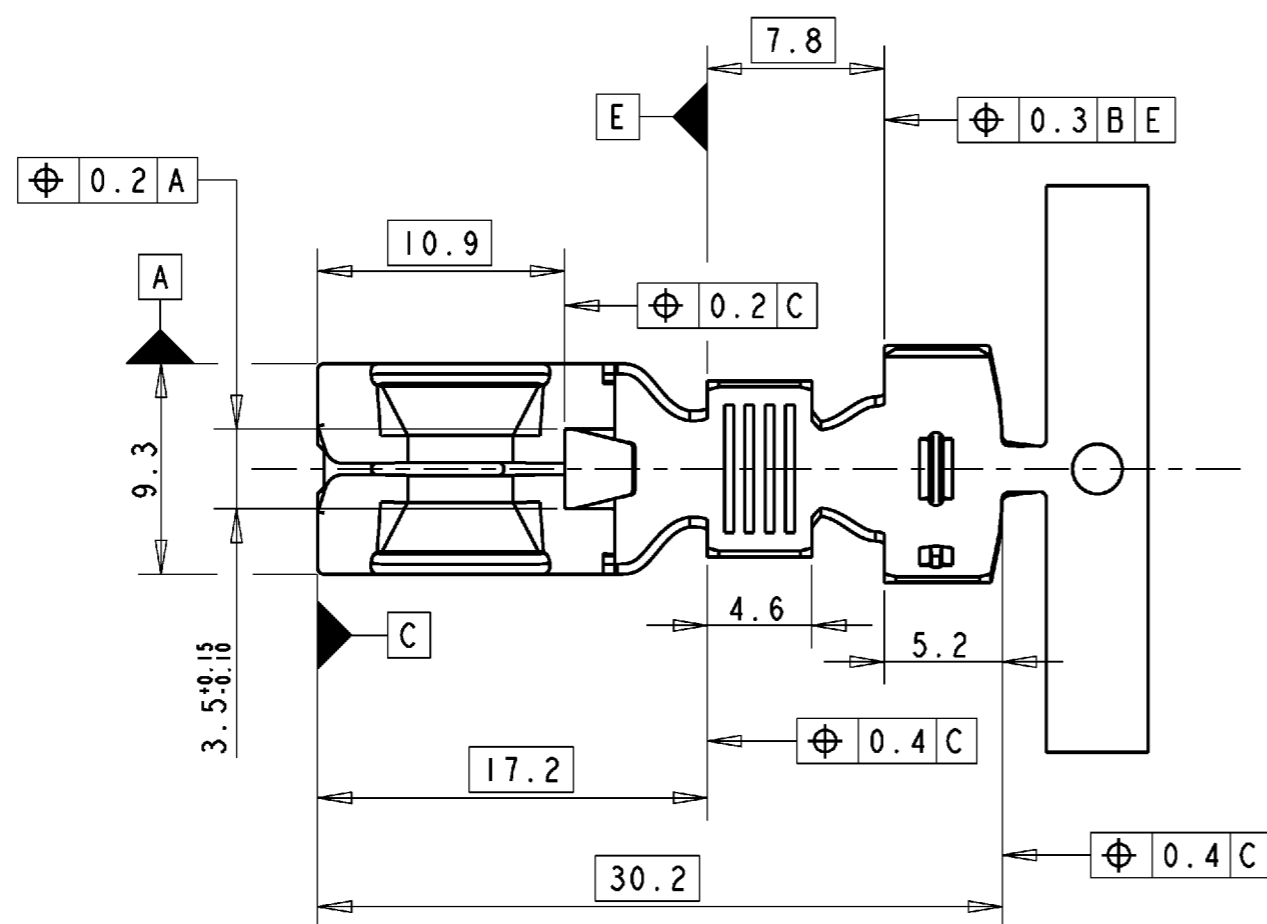
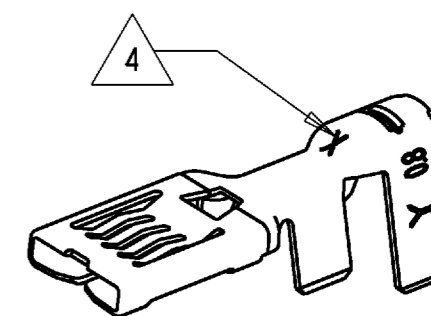
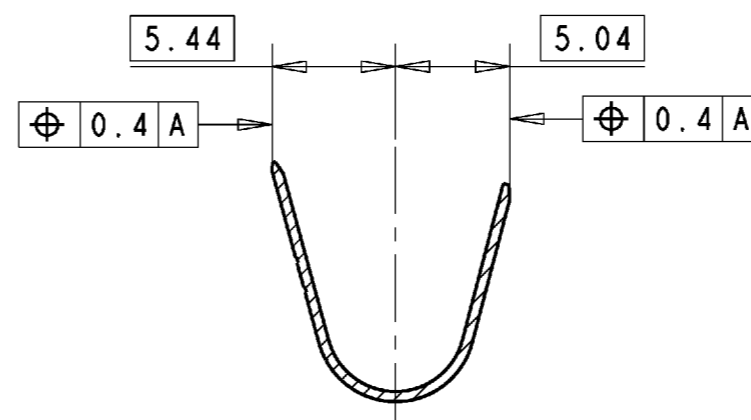


SECTION D-D
SECTION D-D



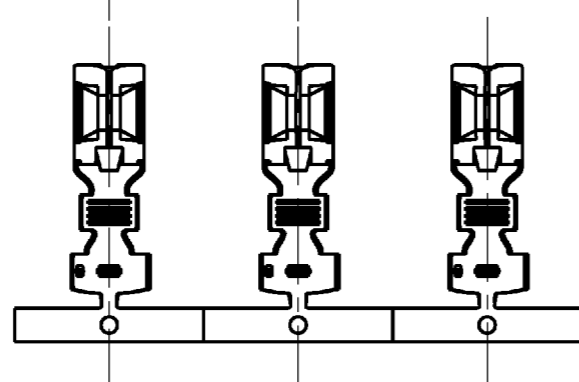
ECHELLE 2:1
SCALE 2:1

SECTION H-H
SECTION H-H



| NOTE | NOTE |
|--|--|
| 1 CONDITIONNEMENT : VOIR SPECIFICATION 107-15602 | PACKAGING : SEE SPECIFICATION 107-15602 |
| 2 MARQUAGE "0.8" POUR CLIP AVEC ENTREFER REGLE POUR UTILISATION SUR LANGUETTE D'EPaisseur 0.8mm. | "0.8" MARKING FOR RECEPTACLE CONTACT WITH GAP SET FOR USE WITH 0.8mm THICK TAB |
| 3 MARQUAGE MATIERE VOIR TABLEAU DES REFERENCES | MATERIAL MARKING SEE PART NUMBER TABLE |
| 4 MARQUAGE GAMME: "C" POUR GAMME 7-10mm2 | RANGE MARKING: "C" FOR RANGE 7-10mm2 |
| 5 PLAN D'INTERMONTABILITE: 1544953 | INTERFACE CAVITY DRAWING: 1544953 |

PAS: 25mm
PITCH: 25mm



ECHELLE 1:1
SCALE 1:1

| | | | | |
|---|---|---------------------|--|---|
| 1801433-1 | CLIP 8mm MAXIFUSE PLUS G: 7-10mm2 8mm MAXIFUSE PLUS RECEPTACLE WIRE RANGE: 7-10mm2 | CuNiSi CuNiSi | "S" | PRE-ETAME SnAg(1-3%): 1-3µ PRE-TINNED SnAg(1-3%): 1-3µ |
| REF TYCO ELECTRONICS TYCO ELECTRONICS PN | DESIGNATION DESCRIPTION | MATIERE MATERIAL | MARQUAGE MATIERE MATERIAL MARKING | FINITION FINISH |

| DIMENSIONS: | | TOLERANCES UNLESS OTHERWISE SPECIFIED: | | Tyco Electronics France SAS RN 90, 38530 Chapareillon | |
|-------------|-----------|--|------------|--|---|
| mm | | 0 PLC ±0.2 | 1 PLC ±0.2 | NAME | RECEPTACLE CONTACT, 8MM MAXIFUSE PLUS, WIRE RANGE 7-10MM2 |
| | | 2 PLC ±0.2 | 3 PLC ±0.2 | PRODUCT SPEC | CLIP 8MM MAXIFUSE PLUS G:7-10MM2 |
| | | 4 PLC ±0.2 | ANGLES ±5° | APPLICATION SPEC | SIZE CAGE CODE DRAWING NO RESTRICTED TO |
| MATERIAL | SEE TABLE | FINISH | SEE TABLE | 114-15107 | A2 00779 C-1801433 |
| | | | | WEIGHT | 0.0023kg |
| | | | | CUSTOMER DRAWING | SCALE 3:1 SHEET 1 OF 1 REV A |

X-ON Electronics

Largest Supplier of Electrical and Electronic Components

Click to view similar products for [Automotive Connectors](#) category:

Click to view products by [TE Connectivity](#) manufacturer:

Other Similar products are found below :

[003-018-000](#) [60403001](#) [60993906-B](#) [M902-2131](#) [M902-2161](#) [M902-2344](#) [72.330.1035.1](#) [73.353.4028.0](#) [F119300-B](#) [F166900](#) [F258300-B](#)
[F358300-B](#) [F407400](#) [F444110](#) [F487000](#) [F509500B-B](#) [827153-1](#) [8N1515-32-24P](#) [9-1326729-8](#) [925474-1](#) [928905-1](#) [964562-4](#) [968782-1](#)
[GT17SA-8DS-HU](#) [98891-1012](#) [98947-1016](#) [12004147](#) [12004475-L](#) [12010290](#) [12010309-B](#) [12015454](#) [12020219-B](#) [12041318-B](#) [12052225-](#)
[L](#) [12052466](#) [12064869](#) [12004327-B](#) [12015308](#) [12015384](#) [12015909](#) [1-21030-1](#) [12041254](#) [12041318](#) [12047946-B](#) [12047957](#) [12047957-L](#)
[12059473](#) [12066261](#) [12110546](#) [12110546-B](#)