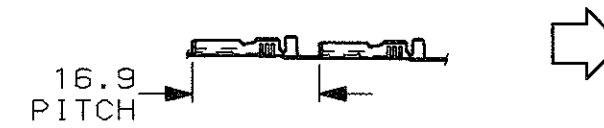


ADATTO PER LINGUETTA
DI 0.8 mm.
(TO FIT TAB 0.8 mm.)

1) STATO DI FORNITURA - SCALA 1:1
(SUPPLY CONDITION - SCALE 1:1)



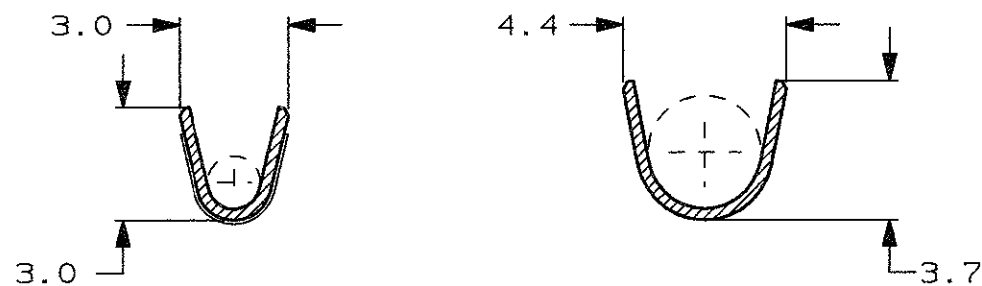
2) SPECIFICA DI PRODOTTO 108-20019
(PRODUCT SPEC. 108-20019)

3) PER LE VERSIONI IN PEZZI SCIOLTI
VEDERE DISEGNO 180439
(FOR LOOSE PIECE VERSION SEE DRAWING 180439).

4 BOBINATO CON CARTA INTERPOSTA TRA LE SPIRE
(REELED WITH INTERLAYER PAPER STRIP)

SEZIONE A-A
(SECTION A-A)

SEZIONE B-B
(SECTION B-B)



OBSOLETE	4	NUDO (UNPLATED)	OTTONE (BRASS)	1-180423-1	AE
		STAGNATO (PRE-TIN PLATED)	OTTONE (BRASS)	180423-2	AG
OBSOLETE		NUDO (UNPLATED)	OTTONE (BRASS)	180423-1	AE
	NOTE	FINITURA / COLORE (FINISH / COLOUR)	MATERIALE (MATERIAL)	NUMERO (P/N)	REV.

CUSTOMER DWG. FOR REFERENCE ONLY
DISEGNO PER CLIENTE SOLO PER RIFERIMENTO

THIS DRAWING IS UNPUBLISHED | RELEASE FOR PUBLICATION | 19

TOLLERANZE, SE NON DIVERSAMENTE SPECIFICATO (TOLERANCES, UNLESS OTHERWISE SPECIFIED)	DIAM. ISOLANTE (INS. DIA. RANGE)	RANGO FILO (WIRE RANGE) mm ²	SCALA (SCALE)
± 0.4	1.5-2.8	0.5-1.5	5:1

ANGOLI (ANGLES) ± 2°

DIS. H. YAALI (DR.) 18 DEC 2000
DESCRIZIONE (DESCRIPTION) FASTON® Connector
CONT. C. TARTARI (CHK) - .110" sr. REC. CONTACT

LOC.	SIZE	NUMERO (DWG NO)	REV.	FOGLIO (SHEET)
I	A3	C-180423	AG1	1 DI (OF) 1

AG1	REVISED PER ECR-15-016346	07MAY2016	NK	LP	APP. (CAPP.)
REV	DESCRIPTION	DATE	DWN	APVD	

X-ON Electronics

Largest Supplier of Electrical and Electronic Components

Click to view similar products for [Terminals](#) category:

Click to view products by [TE Connectivity](#) manufacturer:

Other Similar products are found below :

[00-054007-01074-6](#) [00-054007-70206-1](#) [00-054007-70210-8](#) [00-054007-70217-7](#) [00-054007-70226-9](#) [00-054007-70228-3](#) [00-054007-70248-1](#) [00-054007-70256-6](#) [00-054007-70301-3](#) [00-054007-70316-7](#) [00-054007-49560-4](#) [00-054007-70209-2](#) [00-054007-70225-2](#) [00-054007-70227-6](#) [00-054007-70231-3](#) [00-054007-70241-2](#) [00-054007-70242-9](#) [00-054007-70244-3](#) [00-054007-70246-7](#) [00-054007-70263-4](#) [00-054007-70288-7](#) [00-054007-70290-0](#) [00-054007-70300-6](#) [00-054007-70304-4](#) [01-2065-1-0216](#) [01-2900-1-04412](#) [00581P0075](#) [600TS-10](#) [60205-1](#) [604200-1](#) [605601-1](#) [60598-1-CUT-TAPE](#) [61314-6-C](#) [61810-3](#) [61-S](#) [61-SN](#) [626-0194](#) [62-NBM-A](#) [62-SN](#) [62-SP](#) [63-S](#) [640179-1](#) [M55155/059I03](#) [M55155/079C01](#) [M55155/099H02](#) [M55155/109H01](#) [M55155/109H02](#) [M55155/12XH05](#) [M55155/16XH02](#) [M55155/29-5S](#)