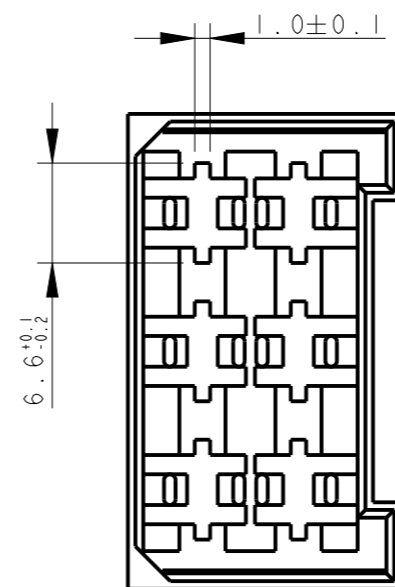
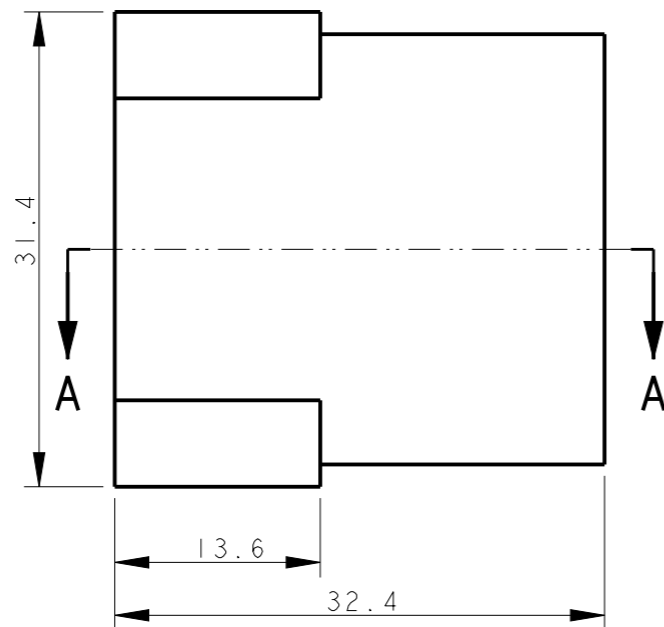
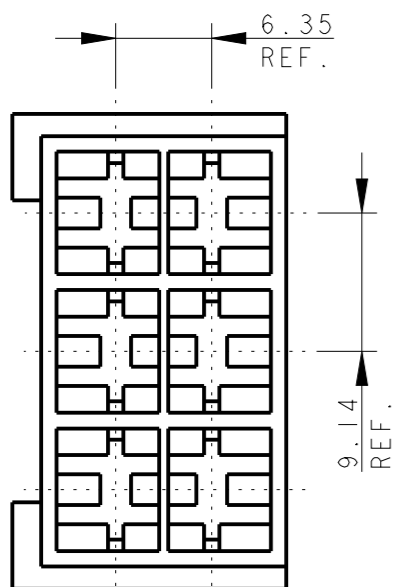


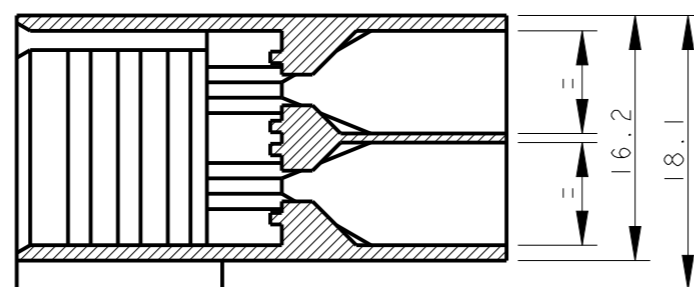
LOC IR DIST -

REVISIONS

| P | LTR | DESCRIPTION | DATE | DWN | APVD |
|-----|-----|----------------------------|-----------|-----|------|
| AL1 | | REVISED PER ECO-09-026346 | 26NOV09 | KK | AEG |
| AL2 | | ECR-10-022530 | 14JUN11 | KK | HMR |
| AL3 | | PN 2-180906-0 RE-ACTIVATED | 05MAR2012 | PKS | RRP |
| AL4 | | REVISED PER ECR-21-101990 | 19APR2021 | SS | EW |

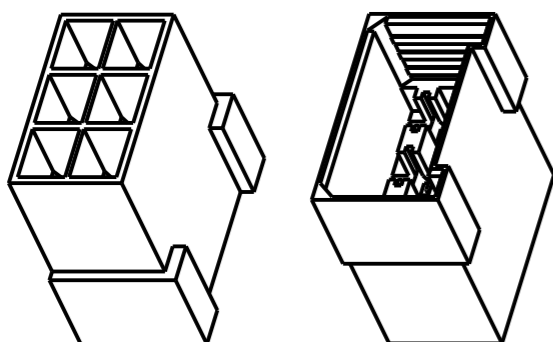


SECTION A - A



- ① PA 6.6 UNFILLED, UL 94-V2
- ② PA 6.6 UNFILLED UL 94 V0 & ACCORDING TO IEC 60335-1 NORM.
- ③ PA 6.6 20% GLASS FIBER FILLED, TECHNYL A 216 V20.
- ④ OBSOLETE PARTS: OBSOLETE CIS STREAMLINING PER D.RENAUD/D.SINISI
- 5 INTERNAL FLASH INSIDE CAVITY (THIN AND FLEXIBLE THAT DO NOT COME OFF) ACCEPTABLE UP TO 0.15 mm. EXTERNAL FLASH ACCEPTABLE UP TO 0.4 mm

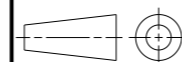
| NOTE | COLOUR | MATERIAL | TE P/N | REV |
|------------|---------|----------|-----------------------|-----|
| ④ OBSOLETE | NATURAL | ① | 4-180906-0 | AK |
| | NATURAL | ③ | 3-180906-0 | AK |
| | NATURAL | ② | 2-180906-0 | AL |
| ④ OBSOLETE | ORANGE | | 0-180906-9 | AK |
| | VIOLET | | 0-180906-8 | AK |
| | BROWN | | 0-180906-6 | AK |
| | BLACK | | 0-180906-5 | AK |
| ④ OBSOLETE | YELLOW | ① | 0-180906-4 | AK |
| | BLUE | | 0-180906-3 | AK |
| | GREEN | | 0-180906-2 | AK |
| | RED | | 0-180906-1 | AK |
| | NATURAL | | 0-180906-0 | AK |



SCALE 1:1

THIS DRAWING IS A CONTROLLED DOCUMENT.

DIMENSIONS: mm



TOLERANCES UNLESS OTHERWISE SPECIFIED:

- 0 PLC ±-
- 1 PLC ±0.3
- 2 PLC ±-
- 3 PLC ±-
- 4 PLC ±-
- ANGLES ±2°

MATERIAL SEE TABLE

FINISH -

DWN H. YAALI 18APR2006

CHK H. YAALI

APVD G. TURCO

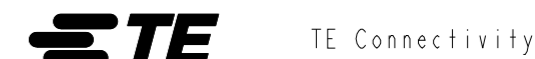
PRODUCT SPEC

108-20020

APPLICATION SPEC

WEIGHT -

CUSTOMER DRAWING



NAME
FASTIN-FASTON Connector, 6.3 mm series TAB HOUSING 6 WAY

SIZE A3 CAGE CODE - DRAWING NO. C-180906 RESTRICTED TO

SCALE 2:1 SHEET 1 OF 1 REV AL4

X-ON Electronics

Largest Supplier of Electrical and Electronic Components

Click to view similar products for [Terminals](#) category:

Click to view products by [TE Connectivity](#) manufacturer:

Other Similar products are found below :

[00-054007-01074-6](#) [00-054007-70206-1](#) [00-054007-70210-8](#) [00-054007-70217-7](#) [00-054007-70226-9](#) [00-054007-70228-3](#) [00-054007-70248-1](#) [00-054007-70256-6](#) [00-054007-70301-3](#) [00-054007-70316-7](#) [0-0320562-0](#) [00-054007-49560-4](#) [00-054007-70209-2](#) [00-054007-70225-2](#) [00-054007-70227-6](#) [00-054007-70231-3](#) [00-054007-70241-2](#) [00-054007-70242-9](#) [00-054007-70244-3](#) [00-054007-70246-7](#) [00-054007-70263-4](#) [00-054007-70288-7](#) [00-054007-70290-0](#) [00-054007-70300-6](#) [00-054007-70304-4](#) [01-2065-1-0216](#) [01-2900-1-04412](#) [00581P0075](#) [600TS-10](#) [60205-1](#) [604200-1](#) [605601-1](#) [60598-1-CUT-TAPE](#) [61314-6-C](#) [61810-3](#) [61-S](#) [61-SN](#) [626-0194](#) [62-NBM-A](#) [62-SN](#) [62-SP](#) [63-S](#) [640179-1](#) [M55155/059I03](#) [M55155/079C01](#) [M55155/099H02](#) [M55155/109H01](#) [M55155/109H02](#) [M55155/12XH05](#) [M55155/16XH02](#)