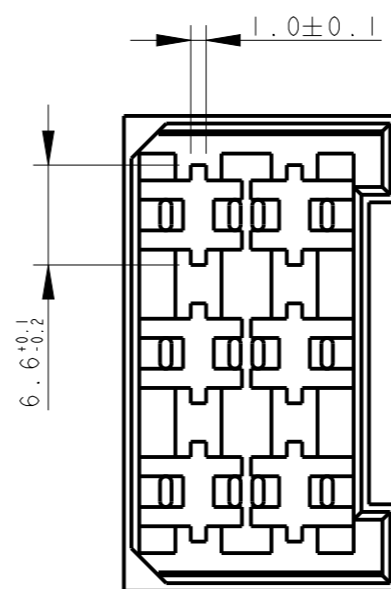
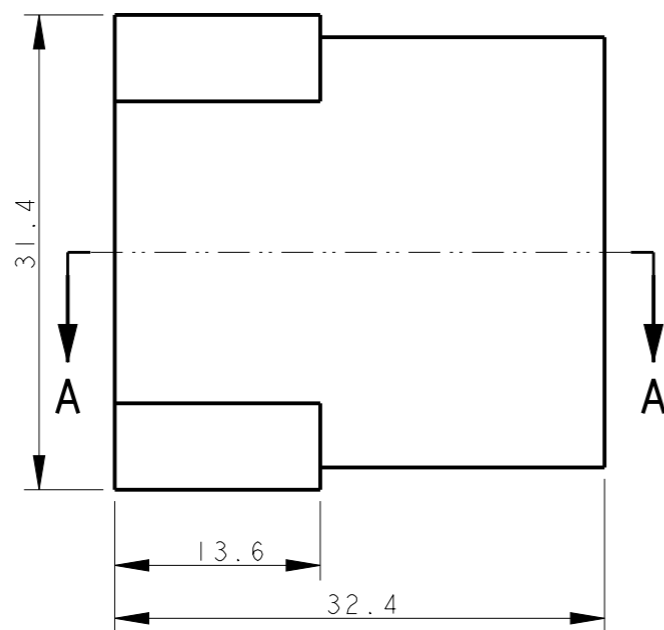
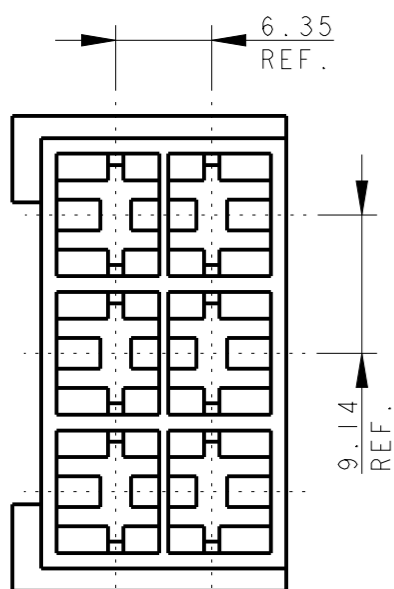


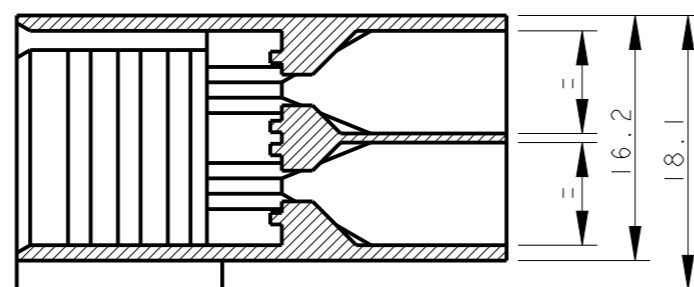
LOC IR DIST -

REVISIONS

P	LTR	DESCRIPTION	DATE	DWN	APVD
AL1		REVISED PER ECO-09-026346	26NOV09	KK	AEG
AL2		ECR-10-022530	14JUN11	KK	HMR
AL3		PN 2-180906-0 RE-ACTIVATED	05MAR2012	PKS	RRP
AL4		REVISED PER ECR-21-101990	19APR2021	SS	EW

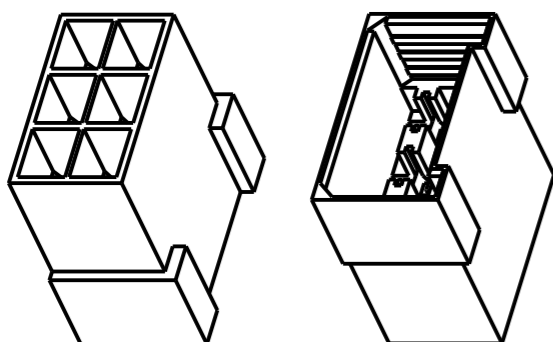


SECTION A - A



- ① PA 6.6 UNFILLED, UL 94-V2
- ② PA 6.6 UNFILLED UL 94 V0 & ACCORDING TO IEC 60335-1 NORM.
- ③ PA 6.6 20% GLASS FIBER FILLED, TECHNYL A 216 V20.
- ④ OBSOLETE PARTS: OBSOLETE CIS STREAMLINING PER D.RENAUD/D.SINISI
- 5 INTERNAL FLASH INSIDE CAVITY (THIN AND FLEXIBLE THAT DO NOT COME OFF) ACCEPTABLE UP TO 0.15 mm. EXTERNAL FLASH ACCEPTABLE UP TO 0.4 mm

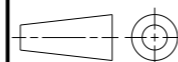
NOTE	COLOUR	MATERIAL	TE P/N	REV
④ OBSOLETE	NATURAL	①	4-180906-0	AK
	NATURAL	③	3-180906-0	AK
	NATURAL	②	2-180906-0	AL
④ OBSOLETE	ORANGE		0-180906-9	AK
	VIOLET		0-180906-8	AK
	BROWN		0-180906-6	AK
	BLACK		0-180906-5	AK
④ OBSOLETE	YELLOW	①	0-180906-4	AK
	BLUE		0-180906-3	AK
	GREEN		0-180906-2	AK
	RED		0-180906-1	AK
	NATURAL		0-180906-0	AK



SCALE 1:1

THIS DRAWING IS A CONTROLLED DOCUMENT.

DIMENSIONS: mm



TOLERANCES UNLESS OTHERWISE SPECIFIED:

- 0 PLC ±-
- 1 PLC ±0.3
- 2 PLC ±-
- 3 PLC ±-
- 4 PLC ±-
- ANGLES ±2°

MATERIAL SEE TABLE

FINISH -

DWN H. YAALI 18APR2006

CHK H. YAALI

APVD G. TURCO

PRODUCT SPEC 108-20020

APPLICATION SPEC -

WEIGHT -

CUSTOMER DRAWING



NAME FASTIN-FASTON Connector, 6.3 mm series TAB HOUSING 6 WAY

SIZE A3 CAGE CODE - DRAWING NO C-180906 RESTRICTED TO

SCALE 2:1 SHEET 1 OF 1 REV AL4

X-ON Electronics

Largest Supplier of Electrical and Electronic Components

Click to view similar products for [Terminals](#) category:

Click to view products by [TE Connectivity](#) manufacturer:

Other Similar products are found below :

[00-054007-01074-6](#) [00-054007-70206-1](#) [00-054007-70210-8](#) [00-054007-70217-7](#) [00-054007-70226-9](#) [00-054007-70228-3](#) [00-054007-70248-1](#) [00-054007-70256-6](#) [00-054007-70301-3](#) [00-054007-70316-7](#) [0-0320562-0](#) [00-054007-49560-4](#) [00-054007-70209-2](#) [00-054007-70225-2](#) [00-054007-70227-6](#) [00-054007-70231-3](#) [00-054007-70241-2](#) [00-054007-70242-9](#) [00-054007-70244-3](#) [00-054007-70246-7](#) [00-054007-70263-4](#) [00-054007-70288-7](#) [00-054007-70290-0](#) [00-054007-70300-6](#) [00-054007-70304-4](#) [01-2065-1-0216](#) [01-2900-1-04412](#) [00581P0075](#) [600TS-10](#) [60205-1](#) [604200-1](#) [605601-1](#) [60598-1-CUT-TAPE](#) [61314-6-C](#) [61810-3](#) [61-S](#) [61-SN](#) [626-0194](#) [62-NBM-A](#) [62-SN](#) [62-SP](#) [63-S](#) [640179-1](#) [M55155/059I03](#) [M55155/079C01](#) [M55155/099H02](#) [M55155/109H01](#) [M55155/109H02](#) [M55155/12XH05](#) [M55155/16XH02](#)