

THIS DRAWING IS UNPUBLISHED.

RELEASED FOR PUBLICATION

© COPYRIGHT

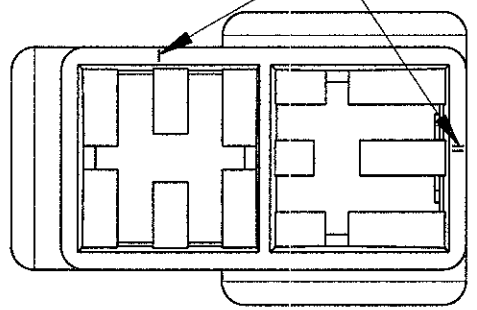
ALL RIGHTS RESERVED.

LOC DIST

REVISIONS

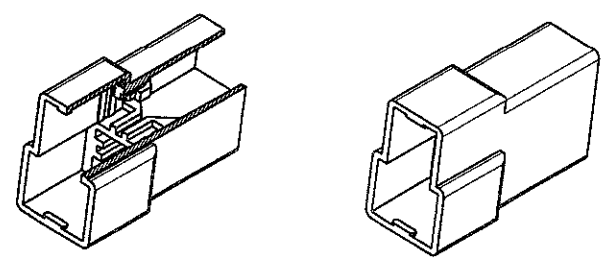
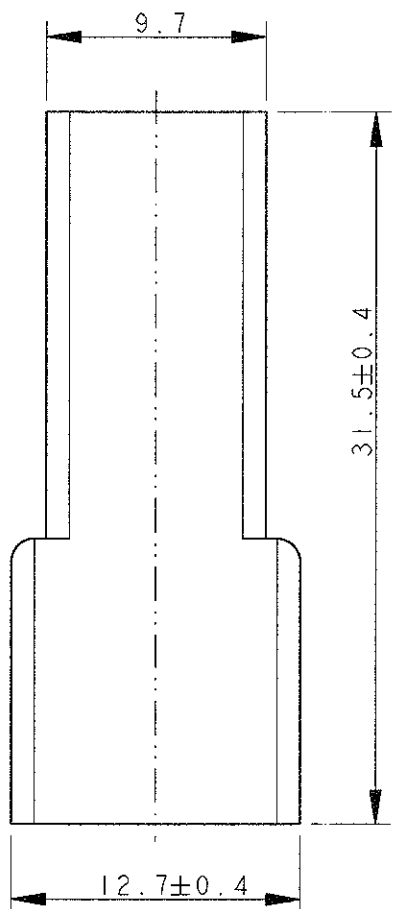
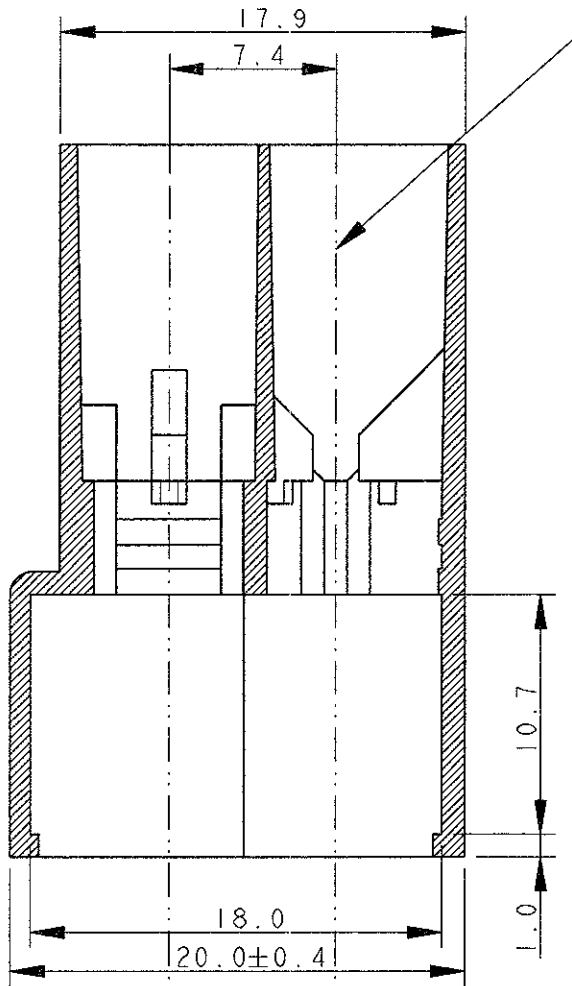
P	LTR	DESCRIPTION	DATE	DWN	APVD
		AB6 REVISED PER ECO-11-005140	01APR11	RK	HMR

CIRCUIT IDENTIFICATION



TYPICAL CAVITY FOR FASTIN-FASTON CONN. .250" SR. TAB CTC

SECTION A-A



SCALE 1:1

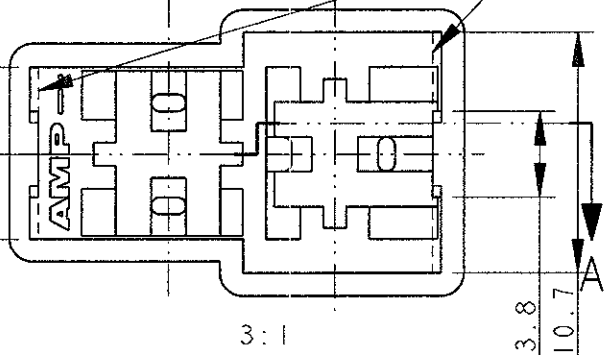
2 OBSOLETE PARTS: OBSOLETE CIS STREAMLINING PER D.RENAUD/D.SINISI

2 OBSOLETE

OBSOLETE

NOTES	COLOUR	MATERIAL	PART NUMBER	REV
	BLACK	POLYAMIDE 6.6	0-180908-5	AB
	YELLOW		0-180908-4	AB
	BLUE		0-180908-3	AB
	GREEN		<del>0-180908-2</del>	AB
	RED		0-180908-1	AB
	NATURAL	NYLON 606 ZYTEL 101L	0-180908-0	AB
UL APPROVED	BLACK		<del>1-180908-5</del>	O
	YELLOW		1-180908-4	AB
	GREEN		1-180908-2	AB
	NATURAL		1-180908-0	AB

1 ALTERNATIVE SHAPE : ACCEPTED ONE RETENTION RIB FOR THE TOTAL LENGHT OF THE HSG.



DOWNSIDE: H. YAALI 08JUL2002		TE Connectivity	
CHECKED: C. TARTARI			
APPROVED: -		NAME: FASTIN-FASTON* Connector, .250" sr. TAB HOUSING 2 WAY	
DIMENSIONS: mm		SIZE: A3	CAGE CODE: 00779
TOLERANCES UNLESS OTHERWISE SPECIFIED:		DRAWING NO: C-180908	RESTRICTED TO: -
0 PLC ±-	1 PLC ±0.3	SCALE: 3:1	
2 PLC ±-	3 PLC ±-	SHEET: 1 OF 1	
4 PLC ±-	ANGLES ±2°	REV: AB6	
MATERIAL: SEE TABLE	FINISH: SEE TABLE	CUSTOMER DRAWING	
WEIGHT: 2.3 g			

## X-ON Electronics

Largest Supplier of Electrical and Electronic Components

*Click to view similar products for [Terminals](#) category:*

*Click to view products by [TE Connectivity](#) manufacturer:*

Other Similar products are found below :

[00-054007-01074-6](#) [00-054007-70206-1](#) [00-054007-70210-8](#) [00-054007-70217-7](#) [00-054007-70226-9](#) [00-054007-70228-3](#) [00-054007-70248-1](#) [00-054007-70256-6](#) [00-054007-70301-3](#) [00-054007-70316-7](#) [00-054007-49560-4](#) [00-054007-70209-2](#) [00-054007-70225-2](#) [00-054007-70227-6](#) [00-054007-70231-3](#) [00-054007-70241-2](#) [00-054007-70242-9](#) [00-054007-70244-3](#) [00-054007-70246-7](#) [00-054007-70263-4](#) [00-054007-70288-7](#) [00-054007-70290-0](#) [00-054007-70300-6](#) [00-054007-70304-4](#) [01-2065-1-0216](#) [01-2900-1-04412](#) [00581P0075](#) [600TS-10](#) [60205-1](#) [604200-1](#) [605601-1](#) [60598-1-CUT-TAPE](#) [61314-6-C](#) [61810-3](#) [61-S](#) [61-SN](#) [626-0194](#) [62-NBM-A](#) [62-SN](#) [62-SP](#) [63-S](#) [640179-1](#) [M55155/059I03](#) [M55155/079C01](#) [M55155/099H02](#) [M55155/109H01](#) [M55155/109H02](#) [M55155/12XH05](#) [M55155/16XH02](#) [M55155/29-5S](#)