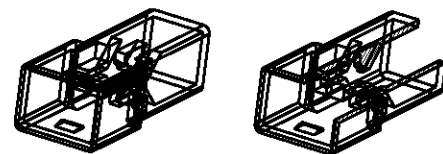
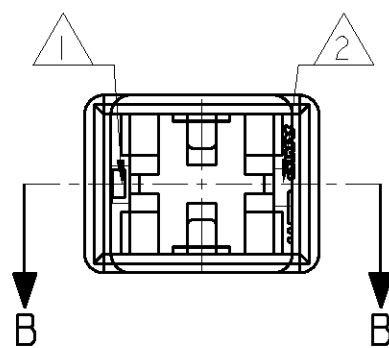
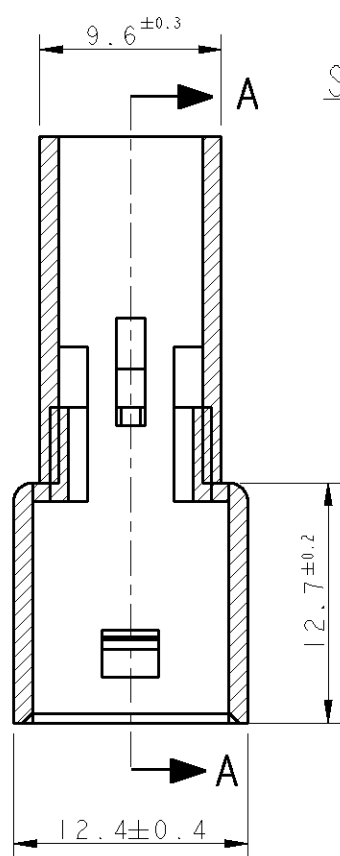


LOC	DIST	REVISIONS			
P	LTR	DESCRIPTION	DATE	DWN	APVD
		AD4 REVISED PER ECO-11-005140	29APR11	RK	HMR

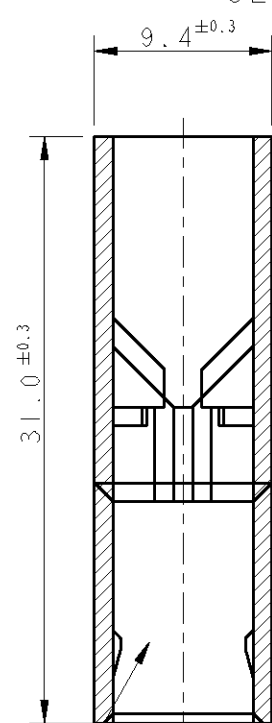


SCALE 1:1

SEZIONE A-A  
SECTION A-A



SEZIONE B-B  
SECTION B-B



TIPICA CAVITA' PER TERMINALE  
FASTIN-FASTON SR.6.35mm.  
(TYPICAL CAVITY FOR  
FASTIN-FASTON .250 SR.)

1 NUMERO DI IMPRONTA STAMPO  
(MOULD CAVITY IDENTIFICATION NO.)

2 MARCHIO DI FABBRICA AMP  
(AMP TRADE MARK)

4 AIR TIGHT PACKAGED  
NON PRODOTTO DA TE ITALIA  
(NOT PRODUCED BY TE ITALY)

5 NON DISPONIBILE DA TE ITALIA  
(NO MORE AVAILABLE FROM TE ITALY)

6 PRODUCT IN ACCORDANCE TO IEC 60335-1 NORM.

7. FLAMMABILITY RATING: UL94 V-2

NOTE	COLORE (COLOUR)	MATERIALE (MATERIAL)	NUMERO (PART NUMBER)	REV
5, 6	NATURALE (NATURAL)	PA 6 UNFILLED	3-180916-0	AD
4, 5	ARANCIO (ORANGE)	PA 6.6 (PA 6.6 UNFILLED)	2-180916-9	AC
	VIOLETTO (VIOLET)		2-180916-8	AC
	GRIGIO (GRAY)		2-180916-7	AC
	MARRONE (BROWN)		2-180916-6	AC
	NERO (BLACK)		2-180916-5	AC
	GIALLO (YELLOW)		2-180916-4	AC
	BLU (BLUE)		2-180916-3	AC
	VERDE (GREEN)		2-180916-2	AC
	ROSSO (RED)		2-180916-1	AC
	NATURALE (NATURAL)		2-180916-0	AC
5	ARANCIO (ORANGE)	PA 6.6 (PA 6.6 UNFILLED)	180916-9	AC
5	VIOLETTO (VIOLET)		180916-8	AC
5	GRIGIO (GRAY)		180916-7	AC
5	NERO (BLACK)		180916-5	AC
5	ROSSO (RED)		180916-1	AC
5	NATURALE (NATURAL)		180916-0	AC

DWN F. BORIN 22JUN98		<b>TE</b> TE Connectivity	
CHK/CONT. C. TARTARI 22JUN98			
APVD -		NAME	
PRODUCT SPEC 108-20020		FASTIN-FASTON CONNECTOR .250 SRS TAB HOUSING, 1 POS.	
APPLICATION SPEC -		RESTRICTED TO -	
WEIGHT -		SIZE A3	CAGE CODE 00779
MATERIAL SEE TABLE		DRAWING NO. C=180916	
FINISH -		SCALE 5:2 SHEET 1 OF 1 REV AD4	
CUSTOMER DRAWING			

DIMENSIONS:	TOLERANCES UNLESS OTHERWISE SPECIFIED:
mm	
0 PLC	±-
1 PLC	±-
2 PLC	±-
3 PLC	±-
4 PLC	±-
ANGLES	±2°
FINISH	-

## X-ON Electronics

Largest Supplier of Electrical and Electronic Components

*Click to view similar products for [Terminals](#) category:*

*Click to view products by [TE Connectivity](#) manufacturer:*

Other Similar products are found below :

[00-054007-01074-6](#) [00-054007-70206-1](#) [00-054007-70210-8](#) [00-054007-70217-7](#) [00-054007-70226-9](#) [00-054007-70228-3](#) [00-054007-70248-1](#) [00-054007-70256-6](#) [00-054007-70301-3](#) [00-054007-70316-7](#) [0-0320562-0](#) [00-054007-49560-4](#) [00-054007-70209-2](#) [00-054007-70225-2](#) [00-054007-70227-6](#) [00-054007-70231-3](#) [00-054007-70241-2](#) [00-054007-70242-9](#) [00-054007-70244-3](#) [00-054007-70246-7](#) [00-054007-70263-4](#) [00-054007-70288-7](#) [00-054007-70290-0](#) [00-054007-70300-6](#) [00-054007-70304-4](#) [01-2065-1-0216](#) [01-2900-1-04412](#) [00581P0075](#) [600TS-10](#) [60205-1](#) [604200-1](#) [605601-1](#) [60598-1-CUT-TAPE](#) [61314-6-C](#) [61810-3](#) [61-S](#) [61-SN](#) [626-0194](#) [62-NBM-A](#) [62-SN](#) [62-SP](#) [63-S](#) [640179-1](#) [M55155/059I03](#) [M55155/079C01](#) [M55155/099H02](#) [M55155/109H01](#) [M55155/109H02](#) [M55155/12XH05](#) [M55155/16XH02](#)