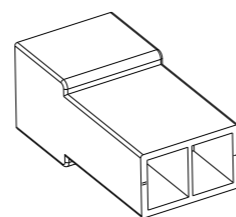
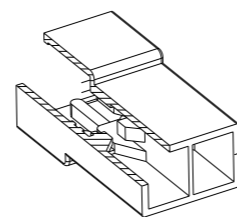
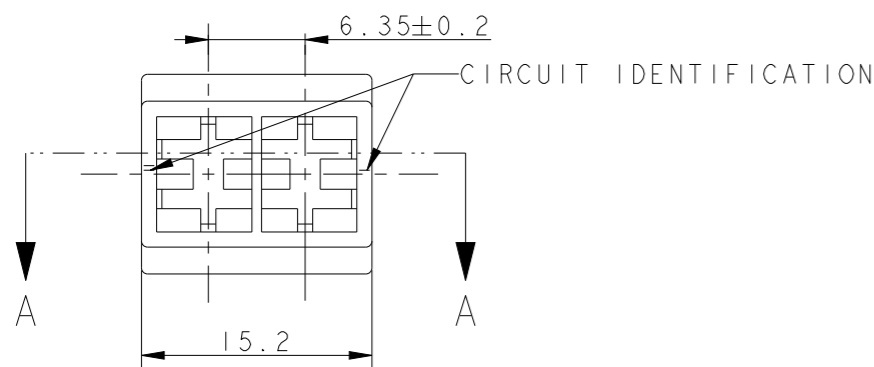


LOC
IR

DIST
-

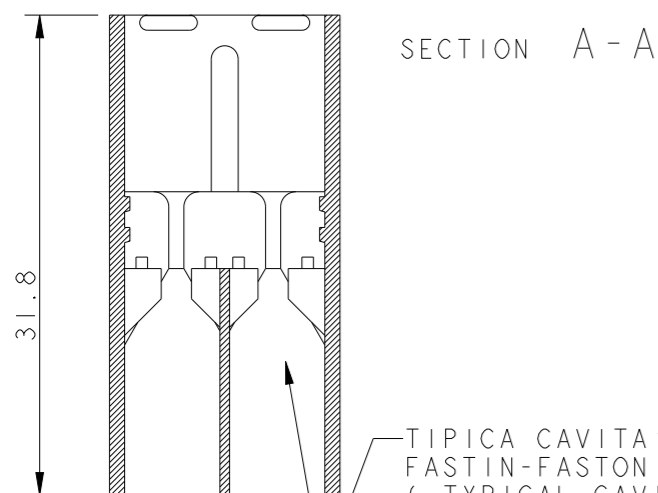
REVISIONS

P	LTR	DESCRIPTION	DATE	DWN	APVD
AM9		CIRCUIT IDENTIFICATION CORRECTED	30JUN2011	PKS	RRP
ANI		REVISED PER ECR-21-101990	19APR2021	SS	EW

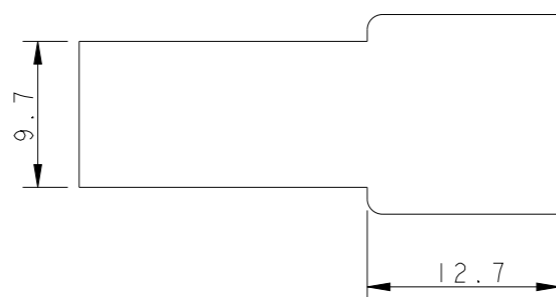
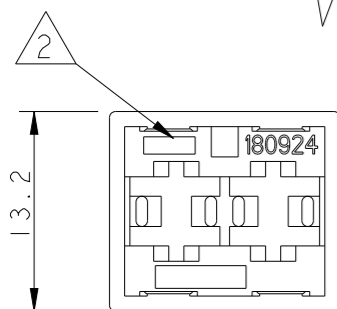


SCALE 1:1

- 1 MARCHIO (TRADEMARK / LOGO)
- 2 NUMERO DI IMPRONTA STAMPO (MOULD CAVITY IDENTIFICATION NO.)
- 3 RISERVATO PER TE JAPAN (RESTRICTED FOR TE JAPAN)
- 4 NON DISPONIBILE DA TE ITALIA (NO MORE AVAILABLE FROM TE ITALY)
- 5 RISERVATO PER TE DE FRANCE (RESTRICTED FOR TE DE FRANCE)
- 6 P/Ns 180924-0/-1/-5/2-...-0: DISPONIBILE DA TE GB VERSIONE CON CAVITA' ASIMMETRICHE, RISPETTIVAMENTE CON I P/Ns 1337024-1/-2/-3/-4. (P/Ns 180924-0/-1/-5/2-...-0: ASYMMETRIC CAVITIES VERSION AVAILABLE FROM TE GB RESPECTIVELY WITH P/Ns 1337024-1/-2/-3/-4).
- 7 ACCEPTED ONE RETENTION RIB FOR THE TOTAL LENGTH OF THE HOUSING ON BOTH SIDES.
- 8 OBSOLETE PARTS: OBSOLETE CIS STREAMLINING PER D.RENAUD/D.SINISI
- 9 INTERNAL FLASH INSIDE CAVITY (THIN AND FLEXIBLE THAT DO NOT COME OFF) ACCEPTABLE UP TO 0.15 mm. EXTERNAL FLASH ACCEPTABLE UP TO 0.4 mm



TIPICA CAVITA' PER TERMINALE TE FASTIN-FASTON SR. 6.35mm.
(TYPICAL CAVITY FOR TE CONTACT FASTIN-FASTON .250" SRS.)

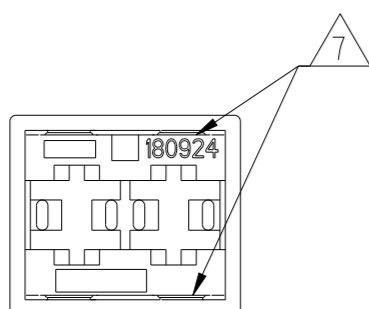


8 OBSOLETE

8 OBSOLETE

NOTE	COLORE (COLOUR)	MATERIALE (MATERIAL)	REV.	NUMERO (PART NUMBER)
3	NATURALE (NATURAL)	PA 6.6 (VERGINE) (PA 6.6, VIRGIN)	AM	0-180924-0
4	NATURALE (NATURAL)	PA 6.6 UL94-V0 (PA 6.6 UNFILLED UL94-V0)	AM	4-180924-0
5	NATURALE (NATURAL)	PA 6.6 (PA 6.6 UNFILLED)	AM	3-280924-0
4	VIOLETTO (VIOLET)	PA 6.6 (PA 6.6 UNFILLED)	AM	0-180924-8
4	MARRONE (BROWN)		AM	0-180924-6
6	NERO (BLACK)		AM	0-180924-5
4	GIALLO (YELLOW)		AM	0-180924-4
6	ROSSO (RED)		AM	0-180924-1
6	NATURALE (NATURAL)		AM	0-180924-0

ALTERNATIVE VIEW FOR RETENTION RIBS



THIS DRAWING IS A CONTROLLED DOCUMENT.

DWN H. YAALI 09JUL2002
CHK C. TARTARI
APVD -

DIMENSIONS: mm

TOLERANCES UNLESS OTHERWISE SPECIFIED:

0 PLC	±-
1 PLC	±0.3
2 PLC	±-
3 PLC	±-
4 PLC	±-
ANGLES	±2°
FINISH	SEE TABLE

MATERIAL SEE TABLE

PRODUCT SPEC 108-20020
APPLICATION SPEC -

WEIGHT 2.2 g

CUSTOMER DRAWING

DWN 09JUL2002
H. YAALI
CHK C. TARTARI
APVD -

NAME
STE TE Connectivity

FASTIN-FASTON Connector,
.250 srs. TAB HOUSING,
2 POSITIONS

SIZE A3 CAGE CODE 00779 DRAWING NO. C-180924 RESTRICTED TO

SCALE 2:1 SHEET 1 OF 1 REV ANI

X-ON Electronics

Largest Supplier of Electrical and Electronic Components

Click to view similar products for [Terminals](#) category:

Click to view products by [TE Connectivity](#) manufacturer:

Other Similar products are found below :

[00-054007-01074-6](#) [00-054007-70206-1](#) [00-054007-70210-8](#) [00-054007-70217-7](#) [00-054007-70226-9](#) [00-054007-70228-3](#) [00-054007-70248-1](#) [00-054007-70256-6](#) [00-054007-70301-3](#) [00-054007-70316-7](#) [00-054007-49560-4](#) [00-054007-70209-2](#) [00-054007-70225-2](#) [00-054007-70227-6](#) [00-054007-70231-3](#) [00-054007-70241-2](#) [00-054007-70242-9](#) [00-054007-70244-3](#) [00-054007-70246-7](#) [00-054007-70263-4](#) [00-054007-70288-7](#) [00-054007-70290-0](#) [00-054007-70300-6](#) [00-054007-70304-4](#) [01-2065-1-0216](#) [01-2900-1-04412](#) [00581P0075](#) [600TS-10](#) [60205-1](#) [604200-1](#) [605601-1](#) [60598-1-CUT-TAPE](#) [61314-6-C](#) [61810-3](#) [61-S](#) [61-SN](#) [626-0194](#) [62-NBM-A](#) [62-SN](#) [62-SP](#) [63-S](#) [640179-1](#) [M55155/059I03](#) [M55155/079C01](#) [M55155/099H02](#) [M55155/109H01](#) [M55155/109H02](#) [M55155/12XH05](#) [M55155/16XH02](#) [M55155/29-5S](#)