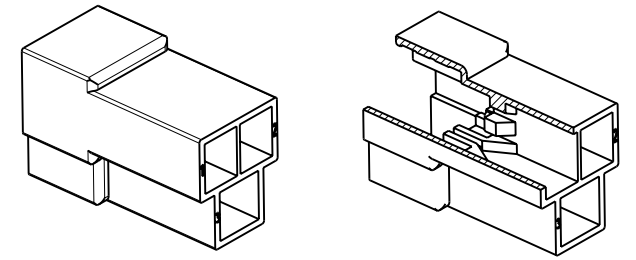
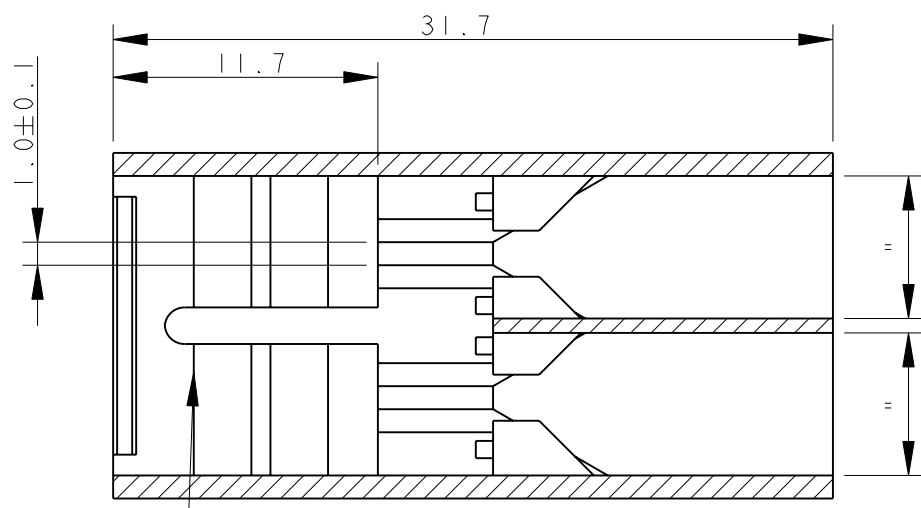


THIS DRAWING IS UNPUBLISHED. RELEASED FOR PUBLICATION 2002
 © COPYRIGHT 2002 ALL RIGHTS RESERVED.

LOC	DIST	REVISIONS			
P	LTR	DESCRIPTION	DATE	DWN	APVD
S4		ADDED 3-...-0, ET00-0137-04	25 JUN 2004	HY	CT
S5		REVISED PER ECO-09-026495	19DEC2009	KK	AEG
S6		ECR-10-022530	14JUN11	KK	HMR

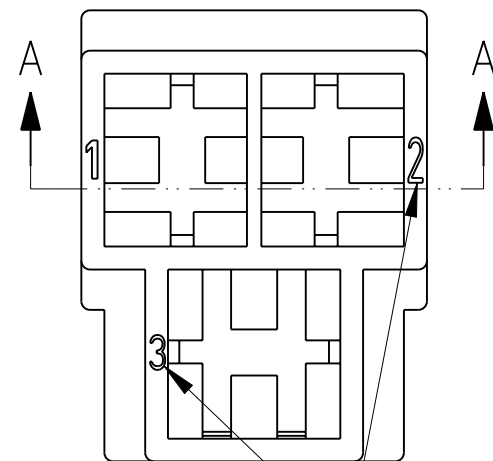
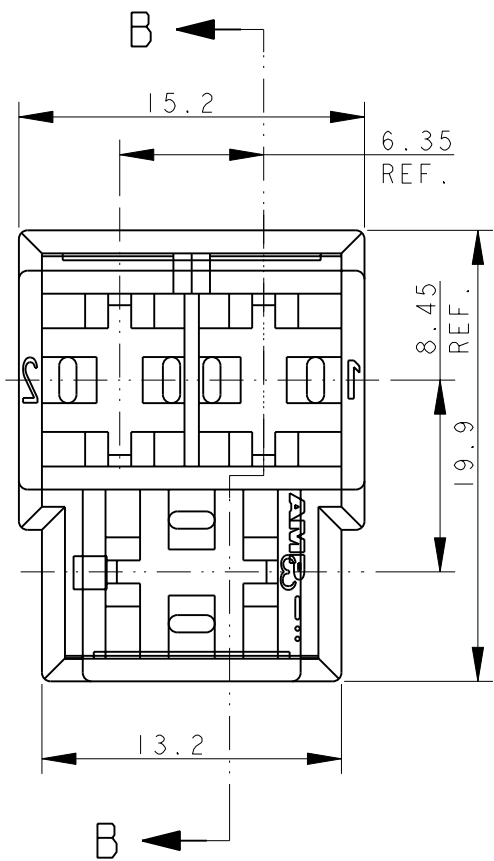
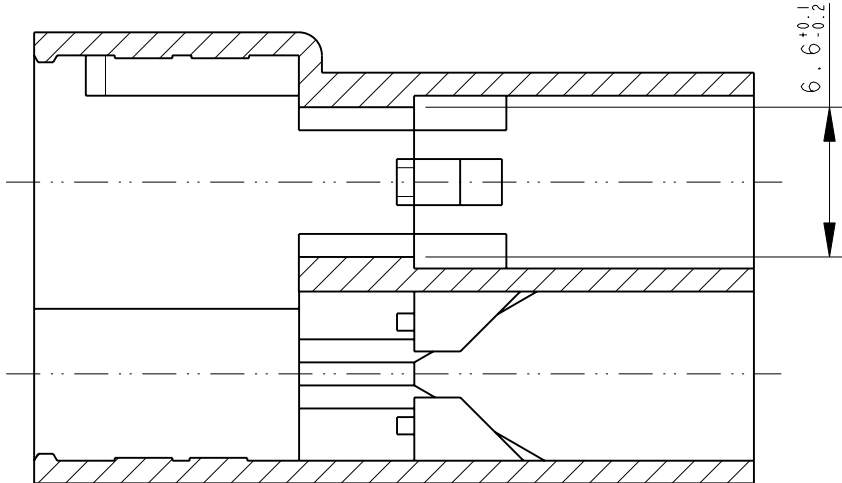
SECTION A - A



SCALE 1:1

TYPICAL CAVITY SUITABLE FOR .250" SR FASTIN-FASTON TAB CONTACT

SECTION B - B



CIRCUIT IDENTIFICATION

OBSOLETE	3	NATURALE (NATURAL)	1	3-180940-0	
OBSOLETE		NATURALE (NATURAL)	2	2-180940-0	S
OBSOLETE		NATURALE (NATURAL)		1-180940-0	S
		GRIGIO (GRAY)		0-180940-7	S
		NERO (BLACK)		0-180940-5	S
		GIALLO (YELLOW)	1	0-180940-4	S
		BLU (BLUE)		0-180940-3	S
OBSOLETE		ROSSO (RED)		0-180940-1	S
		NATURALE (NATURAL)		0-180940-0	S
NOTE		COLORE (COLOUR)	MATERIALE (MATERIAL)	PN	REV

- 1 PA 6.6 UNFILLED, UL 94-V2
- 2 PA 6 UNFILLED, GLOW WIRE TEST AT 750°C.
- 3 SAME AS 180940-0 BUT SPECIAL PACKAGING, ON CARTON BOX, TWO PLASTIC BAG WITH 1000 PIECES EACH.
- 4 OBSOLETE PARTS: OBSOLETE CIS STREAMLINING PER D.RENAUD/D.SINISI

THIS DRAWING IS A CONTROLLED DOCUMENT. DWN H. YAALI 07AUG2002
 CHK C TARTARI
 APVD -

DIMENSIONS: mm TOLERANCES UNLESS OTHERWISE SPECIFIED:
 0 PLC ±-
 1 PLC ±0.3
 2 PLC ±-
 3 PLC ±-
 4 PLC ±-
 ANGLES ±2°

MATERIAL SEE TABLE FINISH SEE TABLE

PRODUCT SPEC 108-20020
 APPLICATION SPEC -
 WEIGHT 3.1 g

STE TE Connectivity
 NAME FASTIN-FASTON* Connector, .250 sr. T TAB HOUSING 3 WAY
 SIZE A3 CAGE CODE 00779 DRAWING NO C-180940 RESTRICTED TO -
 CUSTOMER DRAWING SCALE 3:1 SHEET 1 OF 1 REV S6

X-ON Electronics

Largest Supplier of Electrical and Electronic Components

Click to view similar products for [Terminals](#) category:

Click to view products by [TE Connectivity](#) manufacturer:

Other Similar products are found below :

[00-054007-01074-6](#) [00-054007-70206-1](#) [00-054007-70210-8](#) [00-054007-70217-7](#) [00-054007-70226-9](#) [00-054007-70228-3](#) [00-054007-70248-1](#) [00-054007-70256-6](#) [00-054007-70301-3](#) [00-054007-70316-7](#) [00-054007-49560-4](#) [00-054007-70209-2](#) [00-054007-70225-2](#) [00-054007-70227-6](#) [00-054007-70231-3](#) [00-054007-70241-2](#) [00-054007-70242-9](#) [00-054007-70244-3](#) [00-054007-70246-7](#) [00-054007-70263-4](#) [00-054007-70288-7](#) [00-054007-70290-0](#) [00-054007-70300-6](#) [00-054007-70304-4](#) [01-2065-1-0216](#) [01-2900-1-04412](#) [00581P0075](#) [600TS-10](#) [60205-1](#) [604200-1](#) [605601-1](#) [60598-1-CUT-TAPE](#) [61314-6-C](#) [61810-3](#) [61-S](#) [61-SN](#) [626-0194](#) [62-NBM-A](#) [62-SN](#) [62-SP](#) [63-S](#) [640179-1](#) [M55155/059I03](#) [M55155/079C01](#) [M55155/099H02](#) [M55155/109H01](#) [M55155/109H02](#) [M55155/12XH05](#) [M55155/16XH02](#) [M55155/29-5S](#)