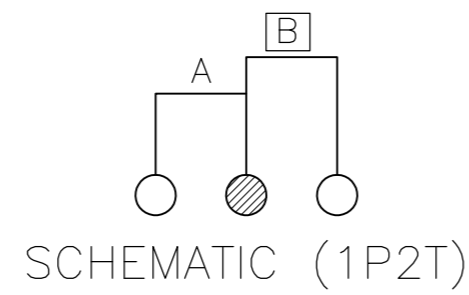
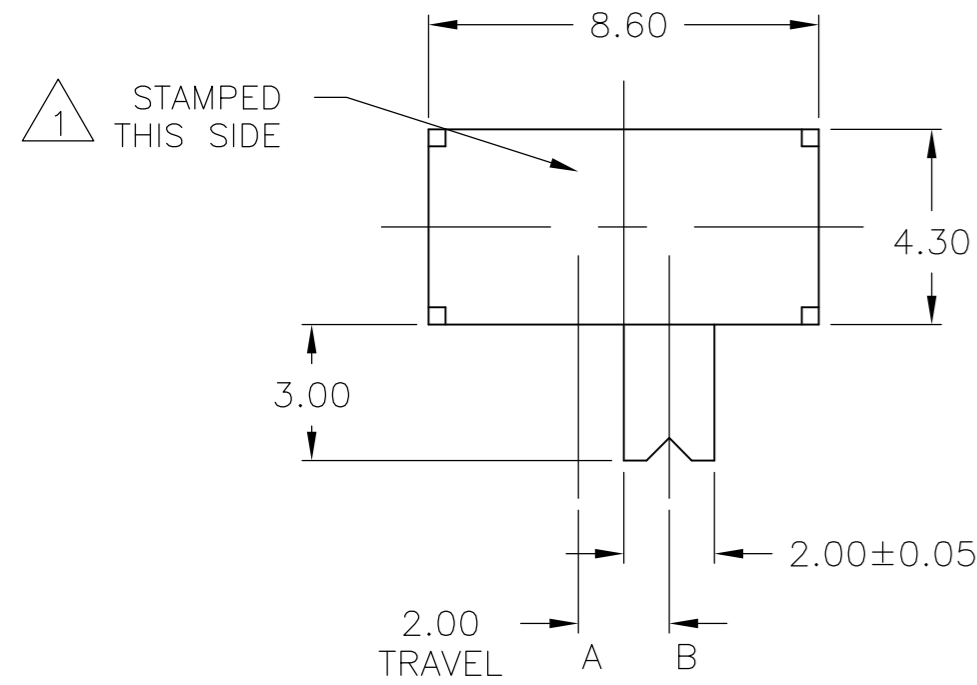


THIS DRAWING IS UNPUBLISHED. RELEASED FOR PUBLICATION
 © COPYRIGHT BY TYCO ELECTRONICS CORPORATION. ALL INTERNATIONAL RIGHTS RESERVED.

LOC		DIST		REVISIONS			
P	LTR	DESCRIPTION		DATE	DWN	APVD	
AD	00	B2	REVISED PER ECO-10-008611	24APR10	HMR	NE	



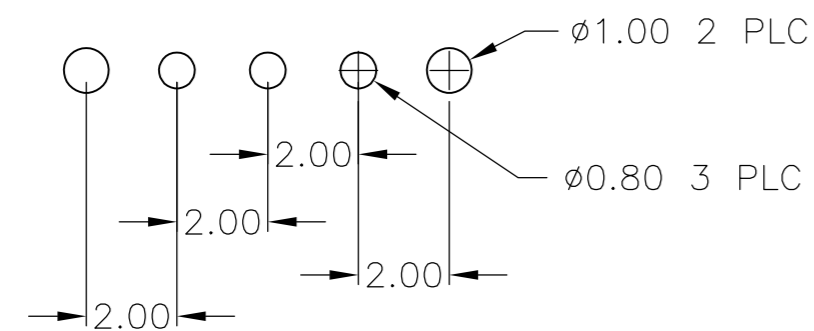
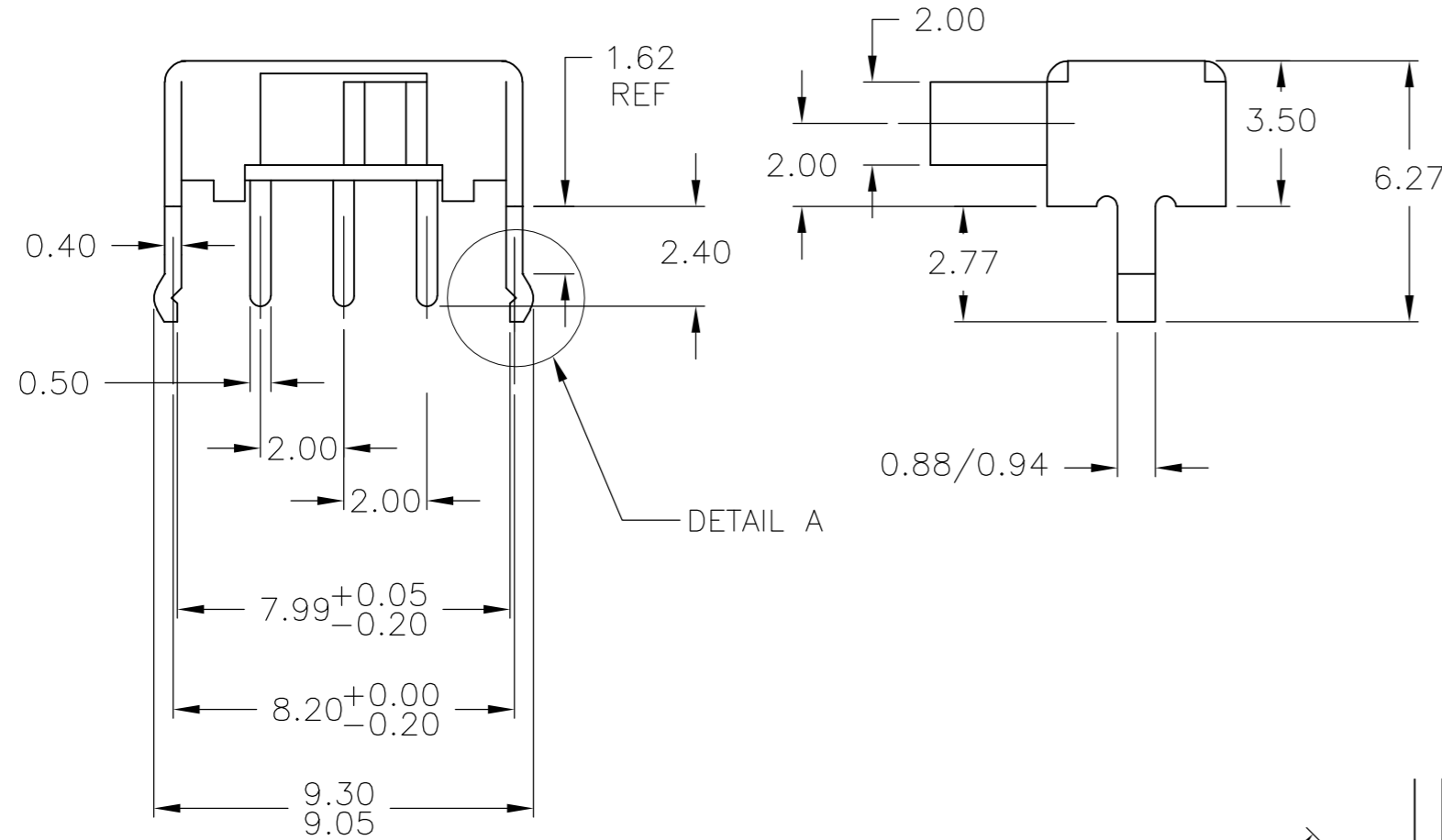
SPECIFICATIONS:
 SINGLE POLE DOUBLE THROW
 BREAK-BEFORE-MAKE

MATERIALS:
 FRAME: STEEL, TIN PLATE
 BOARD: PHENOLIC, NATURAL
 ACTUATOR: POM
 TERMINAL: COPPER ALLOY, FINISH: SILVER/NICKEL
 CONTACT: COPPER ALLOY, FINISH: SILVER

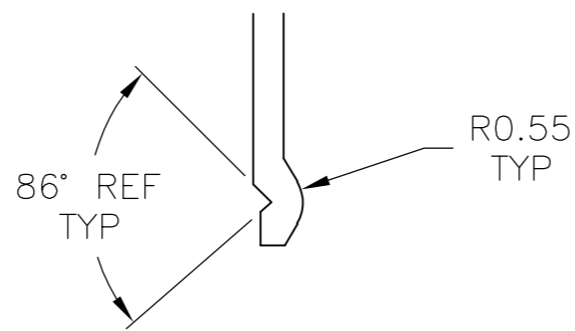
ELECTRICAL:
 CONTACT RATING, .2A@ 30V DC, PER EIA-448, METHOD 6
 INITIAL CONTACT RESISTANCE, 20 MILLIOHMS MAX, PER EIA-364-23B, EACH POSITION
 INSULATION RESISTANCE, 100 MEGOHM MIN. PER EIA-364-21C EACH POSITION
 DIELECTRIC STRENGTH, 500 VOLT AC, PER EIA-364-20B, CONDITION 1, EACH POSITION

MECHANICAL:
 ACTUATION FORCE, 200+/-100 GF
 ACTUATION TRAVEL, 2.0 MM
 LIFE EXPECTANCY, 10,000 CYCLES, PER EIA-448, METHOD 8 AND 9
 VIBRATION, PER EIA 364-28, CONDITION VII, LEVEL E
 MECHANICAL SHOCK, PER EIA-364-27, CONDITION A

ENVIRONMENTAL:
 OPERATING TEMPERATURE, -20 TO +70 DEGREES C, PER EIA 448, METHOD 10
 STORAGE TEMPERATURE, -25 TO +85 DEGREES C
 HUMIDITY AND TEMPERATURE CYCLING PER EIA-364-31B, METHOD III
 TEMPERATURE LIFE PER EIA-364-17B, METHOD B, TEMPERATURE TEST CONDITION 3, TIME CONDITION B
 THERMAL SHOCK, PER EIA-364-32C, -25 TO 85 DEGREES C
 SOLDERABILITY, PER EIA-364-52, CLASS 2, CATEGORY 1, 95% MINIMUM COVERAGE
 RESISTANCE TO SOLDER HEAT, PER 109-202, CONDITION B



RECOMMENDED HOLE LAYOUT



DETAIL A
 SCALE 10:1

- 1 COUNTRY OF ORIGIN AND TE LOGO LOCATED APPROXIMATELY AS SHOWN
- 2 ALL MATERIALS AND FINISHES SHALL COMPLY WITH EU DIRECTIVE 2002/95/EC OF 27JAN2003 (ROHS)".

1825232

1825232-1
 PART NUMBER

THIS DRAWING IS A CONTROLLED DOCUMENT.		DWN R BROWN 29MAR05	Tyco Electronics Corporation Harrisburg, PA 17105-3608	
DIMENSIONS: mm		CHK M SARVER 29MAR05	NAME SLIDE SWITCH, RIGHT ANGLE	
TOLERANCES UNLESS OTHERWISE SPECIFIED:		APVD M SARVER 29MAR05	PRODUCT SPEC	SIZE A2
0 PLC ± -		APPLICATION SPEC	CAGE CODE 00779	DRAWING NO 1825232
1 PLC ± -		WEIGHT	SCALE 6:1	SHEET 1 of 1
2 PLC ± 0.2		CUSTOMER DRAWING	REV B2	RESTRICTED TO
3 PLC ± -				
4 PLC ± -				
ANGLES ± -				
MATERIAL SEE NOTES		FINISH SEE NOTES		

X-ON Electronics

Largest Supplier of Electrical and Electronic Components

Click to view similar products for [Slide Switches](#) category:

Click to view products by [TE Connectivity](#) manufacturer:

Other Similar products are found below :

[6-1437581-1](#) [M43R](#) [MHS123K15D](#) [MHS133K](#) [MHSS1104A](#) [MMD](#) [GH49S010001](#) [MSS12A](#) [EPS1PC1](#) [1825074-1](#) [1825160-3](#) [1825167-2](#)
[1825289-7](#) [25139NLDB](#) [25449NAH](#) [SLB1240R45](#) [1825078-1](#) [1825080-4](#) [1825269-1](#) [1825270-2](#) [STS141RA04](#) [T2215BEN506](#)
[GH46P000001](#) [GH46W000001](#) [GH49P010001](#) [25339NA](#) [M42A](#) [TG36P000000](#) [TG36P000050](#) [AYZ0202AG](#) [47227LFE](#) [49331L](#) [50208L](#)
[L203091MS02Q](#) [4-1437581-7](#) [X2225CR-437W](#) [49329L](#) [1101M1S3ZB8E2](#) [1-1437581-1](#) [MSS2225G04](#) [TG39W000000](#) [1825075-1](#)
[MSS42G](#) [TG36WS80065](#) [T105S1CWZBE](#) [SLB124145](#) [SLB1280R5](#) [SLB1340R45](#) [25136NLDB](#) [TG39W000050](#)