



# Spring Fingers

Spring fingers (also known as shield fingers, grounding springs, universal ground contacts or antenna clips) can be used in all types of small printed circuit board applications across all industries. A spring finger is a single contact, surface mountable internal connector with multiple functions on a PCB. Spring fingers can be used for antenna feeds, low voltage electrical connections and grounding or shielding. They are beneficial in preventing EMI noise and static caused by speakers, motors, microphones or any other type of connector that can cause vibration within an application. TE Connectivity (TE) continues to expand its spring finger portfolio offering a broad range of styles, heights, and materials to meet all customers' needs.

## Features

- Used for grounding between a device and PCB
- Provides shielding for anything that can cause vibrations within a device, such as motors, speakers, and microphones
- Provides a cost effective solution for antenna feeds in all types of devices
- Used as a connection for simple stacking applications between primary and secondary PCBs
- Available in heights as low as 0.4mm and up to 7mm
- Requires limited space on a PCB
- Accommodates soldering and pick and place using standard equipment

## Benefits

- Prevents EMI noise and static
- Provides a highly reliable connection
- Provides an easy and inexpensive method for connecting multiple PCBs
- Allows for versatility in PCB layout
- Provides flexible, quick-turn design-ins
- Does not require expensive, specialized application equipment

## Applications

- Mobile phones
- Wearable devices
- Game consoles
- Tablets
- Patient monitoring devices
- POS scanners
- Security systems
- GPS devices

# Applications and Industries



## Consumer Electronics

- Smart Home Electronics
- Fitness Equipment
- Gaming Consoles
- Wearable Devices
- Home Entertainment Systems
- Payment Terminals
- Tablets
- Mobile Phones
- Printer
- VR Device



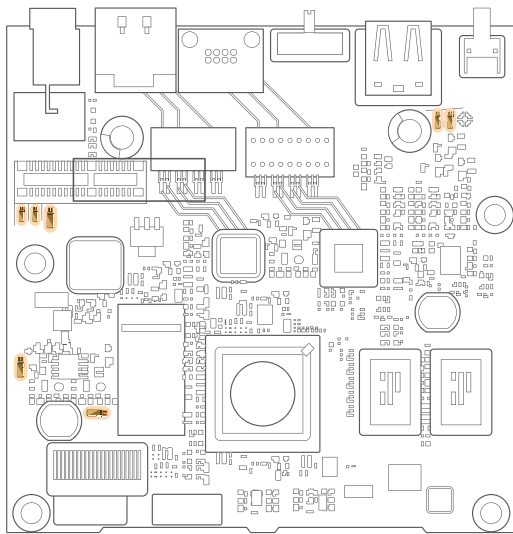
## Industrial / Automotive

- POS Scanners
- Security Systems
- Thermostats
- Backup Cameras
- GPS
- Satellite Radio
- Infotainment
- Rugged tablet/phone



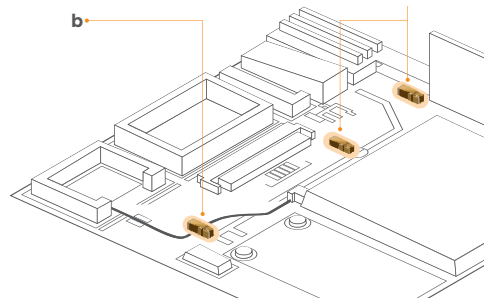
## Consumer Electronics

- Patient Monitoring Devices
- Blood Glucose Monitors
- Hearing Aids



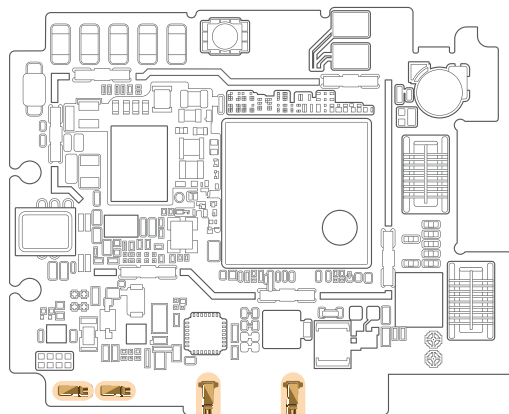
### Medical Device PCB

Used for grounding or shielding on the PCB



### Tablet PCB

- a. Used for grounding or shielding on the PCB
- b. Used for an antenna feed

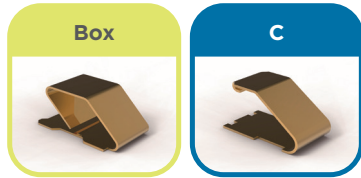


### Wearable Device PCB

Used for grounding between the PCB and the cover of the device

# Types of Spring Fingers

## Standard-flat Contact



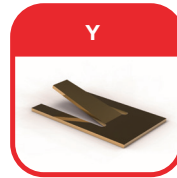
Standard box and C type connectors both have simple geometry for easy application.

## Pre-loaded Contact



Pre-loaded spring fingers are recommended when a stable electrical contact with minimal deflection is needed. The force change is minimized over the working range of the spring finger. Pre-loaded spring fingers are available in three scalable families.

## Ultra-low Profile



Ultra low profile, Y type spring fingers are used in applications where low effective heights are needed.

## Ultra-small Contact



Offered in different heights and styles/form factors, ultra small spring fingers are used in a broad range of applications with space constraints across various industries.

# Types of Scalable Fingers & Key Features



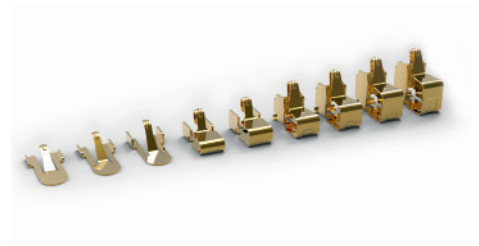
## Standard Scalable

- Dimples on the contact enhance contact force
- Holes for connection to the PCB help increase solder strength and reduce wicking
- Locking feature prevents overstretching
- Contact deflects to the bottom to help prevent permanent deformation
- Bent tip prevents hooking
- Radius on both sides of tip helps remove sharp edges



## Side Protected Scalable

- Low force from 0.2N – 1.0N
- To increase strength and reduce wicking
- Prevents tangled springs in operator gloves
- Avoids deflection during PCB transfer



## Side Protected Pre-loaded Scalable

- Very low force from 0.2N – 0.7N
- Offers a family of smaller working ranges
- Enhanced sidewall design

# Spring Fingers

**Standard and Ultra Low Profile**

Product Number	Type	Contact Finish	Uncompressed Height (mm)	Width (mm)	Working Range																				Current Capacity																	
					0.4	0.5	0.6	0.7	0.8	0.9	1	1.1	1.2	1.3	1.4	1.5	1.6	1.7	1.8	1.9	2	2.1	2.2	2.3		2.4	2.5	2.6	2.7	2.8	2.9	3	3.1	3.2	3.3	3.4	3.5	3.6	3.7	3.8	4	4.5
1447009-5	Y	Gold	0.8	2	0.4	0.5	0.6	0.7																																		0.5A
2040852-1	Y	Gold	0.8	2	0.4	0.5	0.6	0.7																																		1.5A
1447360-9	C	Gold	1.7	1.5																																					1.5A	
1447360-8	C	Gold	1.3	1.2																																					1.5A	
1746136-1	Box	Gold	1.5	2																																				1.5A		
1871059-1	C	Gold	1.7	1.5																																				1.5A		
1674954-1	Box	Gold	2	2																																				0.5A		
1734300-1	C	Gold	3	2.5																																				1.5A		
1447009-7	C	Gold	3.5	2.5																																				1.5A		
1447009-8	C	Gold	3.5	2.5																																				1.5A		
1734303-1	Box	Tin-Copper	4	2.5																																				1.5A		
1437259-6	C	Nickel	4	2.5																																				1.5A		
1775073-1	Box	Gold	4.3	2.5																																				1.5A		
2339640-1	Box	Gold	6.0	2.5																																				2.0A		
440423-1	C	Gold	5.0	2.5																																				2.0A		

**Pre-Loaded**

Product Number	Type	Contact Finish	Uncompressed Height (mm)	Width (mm)	Working Range																				Current Capacity															
					0.4	0.5	0.6	0.7	0.8	0.9	1.0	1.1	1.2	1.3	1.4	1.5	1.6	1.7	1.8	1.9	2.0	2.1	2.2	2.3		2.4	2.5	2.6	2.7	2.8	2.9	3.0	3.1	3.2	3.3	3.4	3.5			
2292838-3	Pre-loaded	Gold	1.1	1	0.4	0.5	0.6	0.7																																1.5A
1551631-5	Pre-loaded	Gold	1.24	1																																				0.5A
2134078-1	Pre-loaded	Gold	1.2	1.05																																				1.5A
2199001-1	Pre-loaded	Gold	1.2	1.05																																				1.5A
1565158-1	Pre-loaded	Gold	1.45	1.1																																				1.0A
1-1447360-1	Pre-loaded	Gold	1.4	1																																				1.5A
1857724-4	Pre-loaded	Gold	1.8	1																																				1.5A
1565322-1	Pre-loaded	Gold	1.6	0.75																																				1.5A
2040761-1	Pre-loaded	Gold	1.99	2																																				1.5A
1554901-1	Pre-loaded	Gold	2	1.1																																				1.5A
2289559-1	Pre-loaded	Gold	2.3	1																																				0.5A
1746854-1	Pre-loaded	Gold	2.4	1.1																																				1.0A
1827625-1	Pre-loaded	Gold	3	1.4																																				1.5A
1903646-1	Pre-loaded	Gold	3	1.4																																				1.5A
2286211-3	Pre-loaded	Gold	2.4	1.7																																				4.2A

# Spring Fingers

Scalable

Product Number	Type	Contact Finish	Uncompressed Height (mm)	Width (mm)	Working Range																																Current Capacity																	
					0.4	0.5	0.6	0.7	0.8	0.9	1.0	1.1	1.2	1.3	1.4	1.5	1.6	1.7	1.8	1.9	2.0	2.1	2.2	2.3	2.4	2.5	2.6	2.7	2.8	2.9	3.0	3.1	3.2	3.3	3.4	3.5		3.6																
1551572-5	Pre-loaded	Gold	1.8	1.15																																									0.5A									
1551573-5	Pre-loaded	Gold	2.15	1.15																																													0.5A					
1551574-5	Pre-loaded	Gold	2.6	1.15																																													0.5A					
1551575-5	Pre-loaded	Gold	3	1.15																																														0.5A				
1551576-5	Pre-loaded	Gold	3.4	1.15																																														0.5A				
2199248-4	C	Gold	1	2																																														2.0A				
2199248-5	C	Gold	1.3	2																																																2.0A		
2199248-6	C	Gold	1.6	2																																																2.0A		
2199249-3	C	Gold	2	1.5																																																2.0A		
2199249-4	C	Gold	2.3	1.5																																																	2.0A	
3-2199250-2	C	Gold	2.9	1.5																																																	2.0A	
3-2199250-3	C	Gold	3.2	1.5																																																	2.0A	
3-2199250-4	C	Gold	3.6	1.5																																																		2.0A
3-2199250-5	C	Gold	3.8	1.5																																																	2.0A	
2108693-4	Pre-loaded	Gold	1.1	1																																																1.5A		
2108610-5	Pre-loaded	Gold	1.4	1																																																1.5A		
2108611-5	Pre-loaded	Gold	1.7	1																																																	1.5A	
2108612-5	Pre-loaded	Gold	2.05	1																																																1.5A		
2108613-5	Pre-loaded	Gold	2.4	1																																																1.5A		
2108614-5	Pre-loaded	Gold	2.7	1																																																1.5A		
2108615-5	Pre-loaded	Gold	3	1																																																1.5A		

Ultra-Small

Product Number	Type	Contact Finish	Uncompressed Height (mm)	Width (mm)	Working Range																																Current Capacity																	
					0.4	0.5	0.6	0.7	0.8	0.9	1.0	1.1	1.2	1.3	1.4	1.5	1.6	1.7	1.8	1.9	2.0	2.1	2.2	2.3	2.4	2.5	2.6	2.7	2.8	2.9	3.0	3.1	3.2	3.3	3.4	3.5		3.6																
2306334-3	Small	Gold	1.2	1																																																	1.5A	
2329497-2	Small	Gold	1.15	1																																																		1.0A
2306654-3	Small	Gold	1.8	1																																																	1.5A	
2306454-3	Small	Gold	2.28	1																																																	1.0A	
2336713-2	Small	Gold	1.45	1																																																	1.0A	

# Frequently Asked Questions

### Question 1

*Why would I use a pre-loaded spring finger in an application?*

#### Answer 1

A pre-loaded spring finger allows for the same amount of force with a smaller compression and provides a stable electrical contact with minimal deflection. These features are useful for applications with limited available height.

### Question 2

*Which style of spring finger is best for my application?*

#### Answer 2

Spring fingers are typically some of the last pieces added to a board. The type used depends upon the height and space left on the board, but the decision is typically based on your design needs.

### Question 3

*Can I combine different types of spring fingers in an application?*

#### Answer 3

Yes, an application can have multiple spring fingers of more than one type. For example, simple C types can be used for grounding between the device and the PCB, while multiple pre-loaded spring fingers are used on the board for shielding or other simple connections.

### Question 4

*What are the benefits of using a scalable spring finger?*

#### Answer 4

Scalable spring fingers use a common footprint, allowing easy design changes without requiring any extra space.

## te.com

TE Connectivity, TE, TE Connectivity (logo) are trademarks owned or licensed by the TE Connectivity Ltd. family of companies. All other logos, products and/or company names referred to herein might be trademarks of their respective owners.

©2020 TE Connectivity Ltd. family of companies. All Rights Reserved.

6-1773460-8 02/20 DND

### For More Information

USA:	1.800.522.6752
Canada:	1.905.475.6222
Mexico:	52.0.55.1106.0800
Latin/S. America:	54.0.11.4733.2200
Germany:	49.0.6251.133.1999
UK:	44.0.800.267666
France:	33.0.1.3420.8686
Netherlands:	31.0.73.6246.999
China:	86.0.400.820.6015

## X-ON Electronics

Largest Supplier of Electrical and Electronic Components

*Click to view similar products for [EMI Gaskets, Sheets, Absorbers & Shielding](#) category:*

*Click to view products by [TE Connectivity](#) manufacturer:*

Other Similar products are found below :

[8101010140](#) [8563-0090-89](#) [1194-7.7X10](#) [1245-34"X18YD](#) [1267](#) [1345-3/8x18yrd](#) [1380-2"X8"](#) [1554907-1](#) [2320002000](#) [2320014700](#)  
[SG293037DS](#) [ST005PCN50](#) [55005107](#) [38M4040AA0606](#) [46J5N02020.NN00](#) [1125-8X10](#) [1126X1"](#) [1170-3/4X18YDS](#) [1170-7.7x10](#) [1183-](#)  
[12"X18YD](#) [6-34T-BD-0.315](#) [SG125187D-24](#) [SG125250R-24](#) [SG187375R-24](#) [SG284050DS](#) [8402010540](#) [KIT TECH CLIP](#) [1194](#) [10-40450-](#)  
[28S](#) [1245](#) [1267-1/2"x18yd](#) [46J8501020.NN00](#) [1170-1/4"x18yd](#) [AL-36FR-1x54.5](#) [3013310A](#) [1194X1"](#) [3020604](#) [3021302](#) [3031313](#) [260709](#)  
[3021310](#) [6-34UT-070-BD-16](#) [303076048](#) [46J5N03020.NN00](#) [30206025](#) [30395641](#) [3030403](#) [3690103020](#) [HNY-LT15CU4241](#) [1170-](#)  
[3/8"x18yd](#)