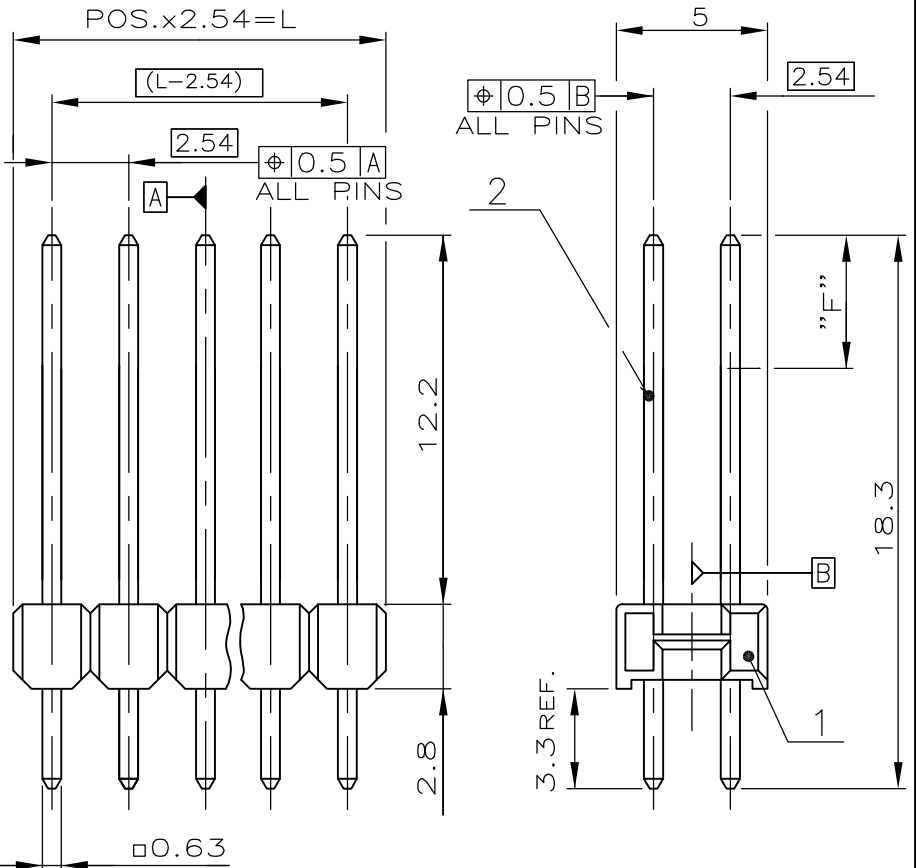


LOC	DIST	REVISIONS					
—	—	P	LTR	DESCRIPTION	DATE	DWN	APVD
			D	CONTACT PIN BASE MATERIAL AND PLATING CHANGE	03JUL2014	KJK	JK

POS. PER ROW	L±0.4	PART NUMBER
—	—	—
2	5.08	\triangle — — — — 2
3	7.62	\triangle — — — — 3
4	10.16	\triangle — — — — 4
5	12.70	\triangle — — — — 5
6	15.24	828 080 — 6
7	17.78	\triangle — — — — 7
8	20.32	828 080 — 8
9	22.86	\triangle — — — — 9
10	25.40	1- 828 080 - 0
11	27.94	1- 828 080 - 1
12	30.48	\triangle 1- — — — — 2
13	33.02	\triangle 1- — — — — 3
14	35.56	\triangle 1- — — — — 4
15	38.10	\triangle 1- — — — — 5
16	40.64	\triangle 1- — — — — 6
17	43.18	\triangle 1- — — — — 7
18	45.72	1- 828 080 - 8
19	48.26	1- 828 080 - 9
20	50.80	\triangle 2- — — — — 0
21	53.34	2- 828 080 - 1
22	55.88	2- 828 080 - 2
23	58.42	2- 828 080 - 3
24	60.96	2- 828 080 - 4
25	63.50	2- 828 080 - 5
26	66.04	2- 828 080 - 6
27	68.58	2- 828 080 - 7
28	71.12	2- 828 080 - 8
29	73.66	2- 828 080 - 9
30	76.20	\triangle 3- — — — — 0
31	78.74	3- 828 080 - 1
32	81.28	\triangle 3- — — — — 2
33	83.82	3- 828 080 - 3
34	86.36	3- 828 080 - 4
35	88.90	3- 828 080 - 5
36	91.44	\triangle 3- — — — — 6
37	93.98	3- 828 080 - 7
38	96.52	3- 828 080 - 8
39	99.06	3- 828 080 - 9
40	101.60	\triangle 4- — — — — 0
41	104.14	4- 828 080 - 1
42	106.68	4- 828 080 - 2
43	109.22	4- 828 080 - 3
44	111.76	4- 828 080 - 4
45	114.30	4- 828 080 - 5
46	116.84	4- 828 080 - 6
47	119.38	4- 828 080 - 7
48	121.92	4- 828 080 - 8
49	124.46	4- 828 080 - 9
50	127.00	5- 828 080 - 0



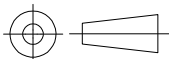
- \triangle MATING SIDE: MIN. 0.7 μ m PdNi + MIN. 0.1 μ m Au FLASH BY AREA F OVER 1.27 μ m Ni
- SOLDER SIDE: MIN. 2.5 μ m TIN OVER 1.27 μ m Ni
- \triangle OBSOLETE

CONTACT PIN	CuZn	\triangle	2
PIN HOUSING	PBT	GREEN	1
DESCRIPTION	MATERIAL	FINISH COLOR /	ITEM NUM

THIS DRAWING IS UNPUBLISHED. ALL RIGHTS RESERVED.

COPYRIGHT - By -

DIMENSIONS: mm	DWN G.HOLAUS	31.08.89	MATERIAL SEE TABLE	FINISH —		
	CHK M.SCHAARSCHMIDT	07.02.90	TE Connectivity			
TOLERANCES UNLESS OTHERWISE SPECIFIED: ±0.2mm	APVD —	PRODUCT SPEC 108-18012			NAME AMPMODU II PIN HEADER, DUAL ROW	
0 PLC ± -	PRODUCT SPEC	APPLICATION SPEC —	SIZE A4	CAGE CODE 00779	DRAWING NO C-828080	RESTRICTED TO —
1 PLC ± -	WEIGHT —	CUSTOMER DRAWING	SCALE 4:1	SHEET 1 OF 1	REV D	
2 PLC ± -						
3 PLC ± -						
4 PLC ± -						
ANGLES ± -						



X-ON Electronics

Largest Supplier of Electrical and Electronic Components

Click to view similar products for [Headers & Wire Housings](#) category:

Click to view products by [TE Connectivity](#) manufacturer:

Other Similar products are found below :

[95000-104TRLF](#) [10135584-644402LF](#) [DF62W-EP2022PCA](#) [95000-106TRLF](#) [DF62W-2022SCA](#) [DF62W-EP2022PC](#) [2203348](#) [DF62W-2022SC](#) [1084018](#) [1029039](#) [1084017](#) [802-10-012-10-002000](#) [1112640](#) [1112639](#) [000-34000](#) [0009482033](#) [0009507031](#) [57102-S06-03LF](#) [57202-S52-04LF](#) [PCN6-15S-2.5E](#) [0039019024](#) [58102-G61-06LF](#) [582553-1](#) [0009508121](#) [0050291907](#) [018731A](#) [LY20-4P-DT1-P1E-BR](#) [02.125.8002.8](#) [60101931](#) [60598-1 \(Cut Strip\)](#) [M1625-3R/100](#) [61062-3](#) [61082-181009](#) [636-1427](#) [638009-1](#) [641938-9](#) [641991-4](#) [644168-1](#) [647662-1](#) [65039-019ELF](#) [65817-002LF](#) [65817-015LF](#) [65863-015LF](#) [66207-023LF](#) [67016-026LF](#) [67046-001LF](#) [67095-007LF](#) [68002-116](#) [68016-236H](#) [68648-049](#)