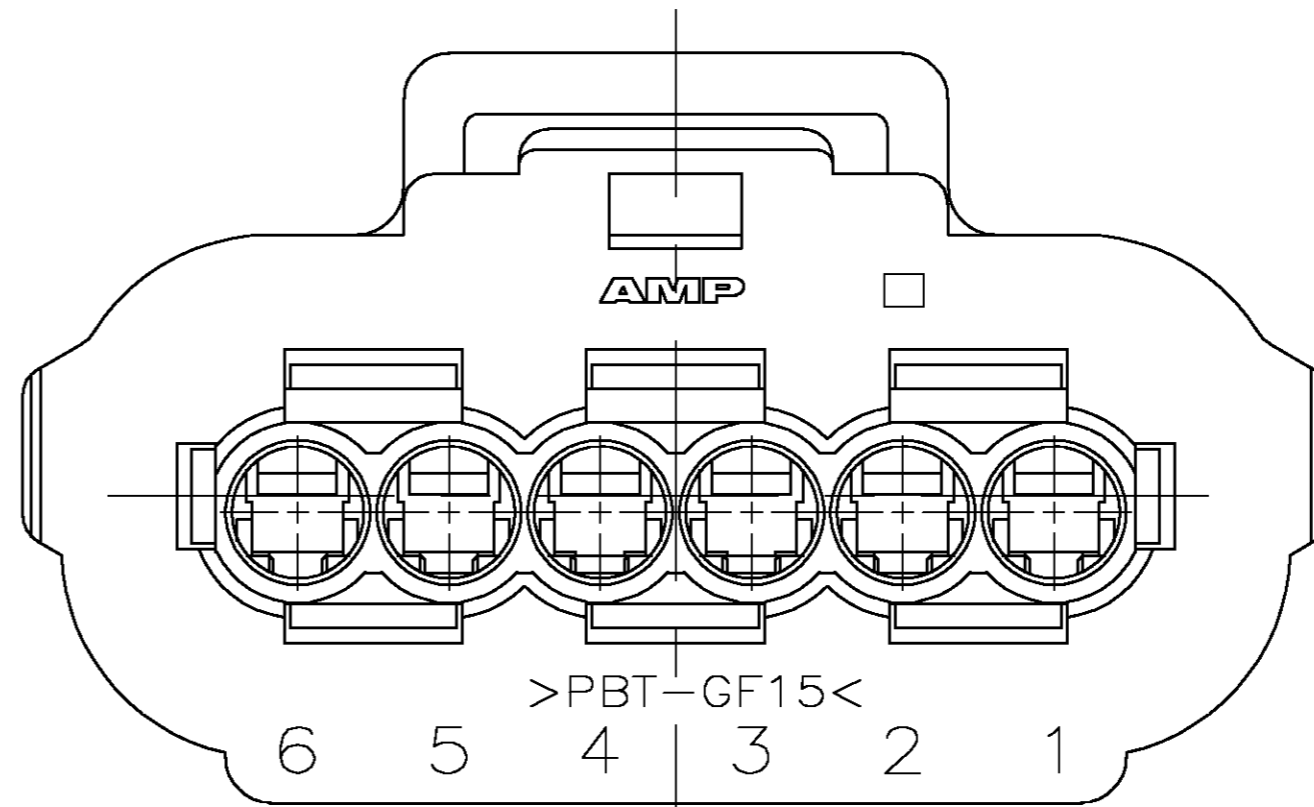
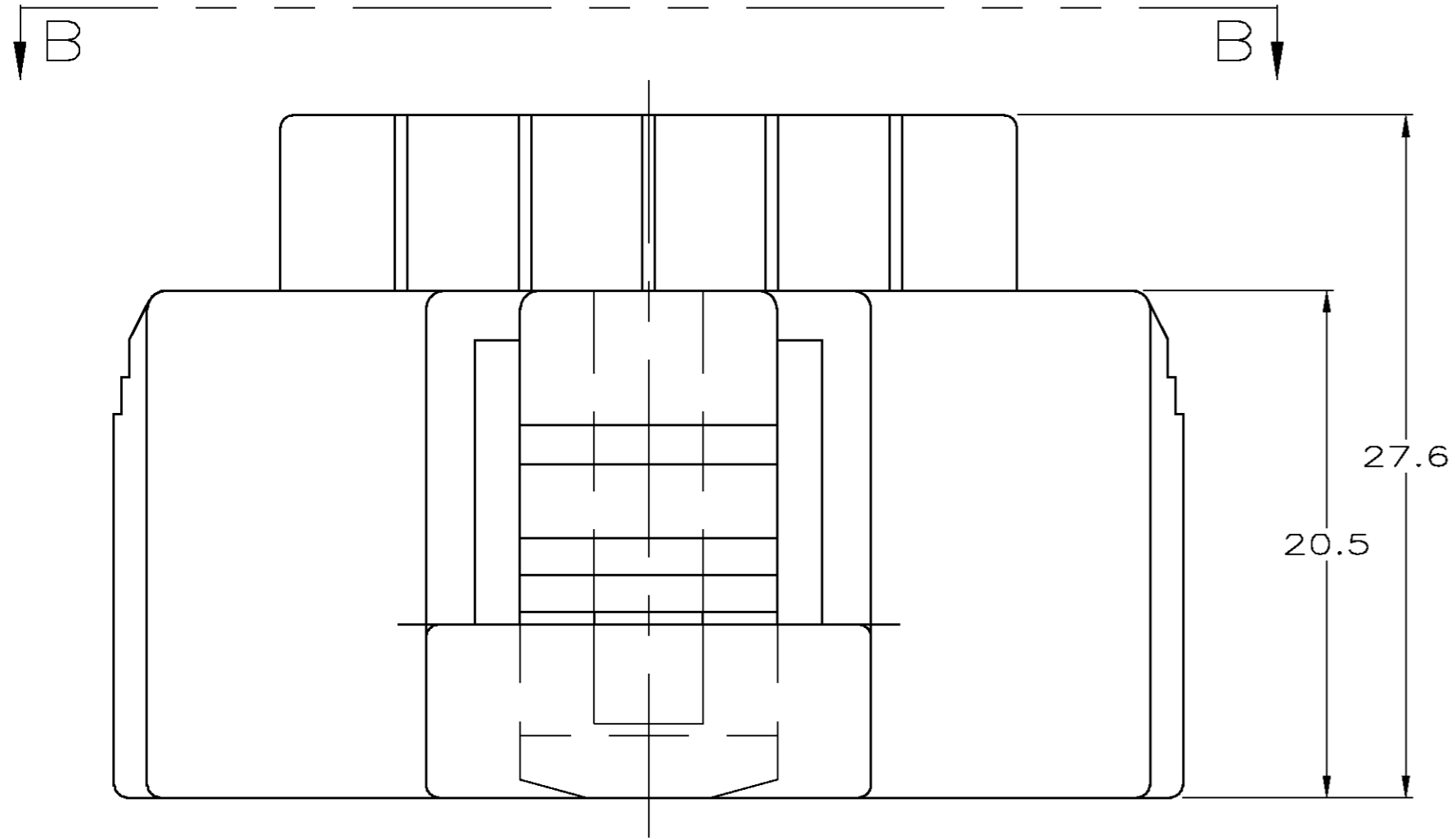
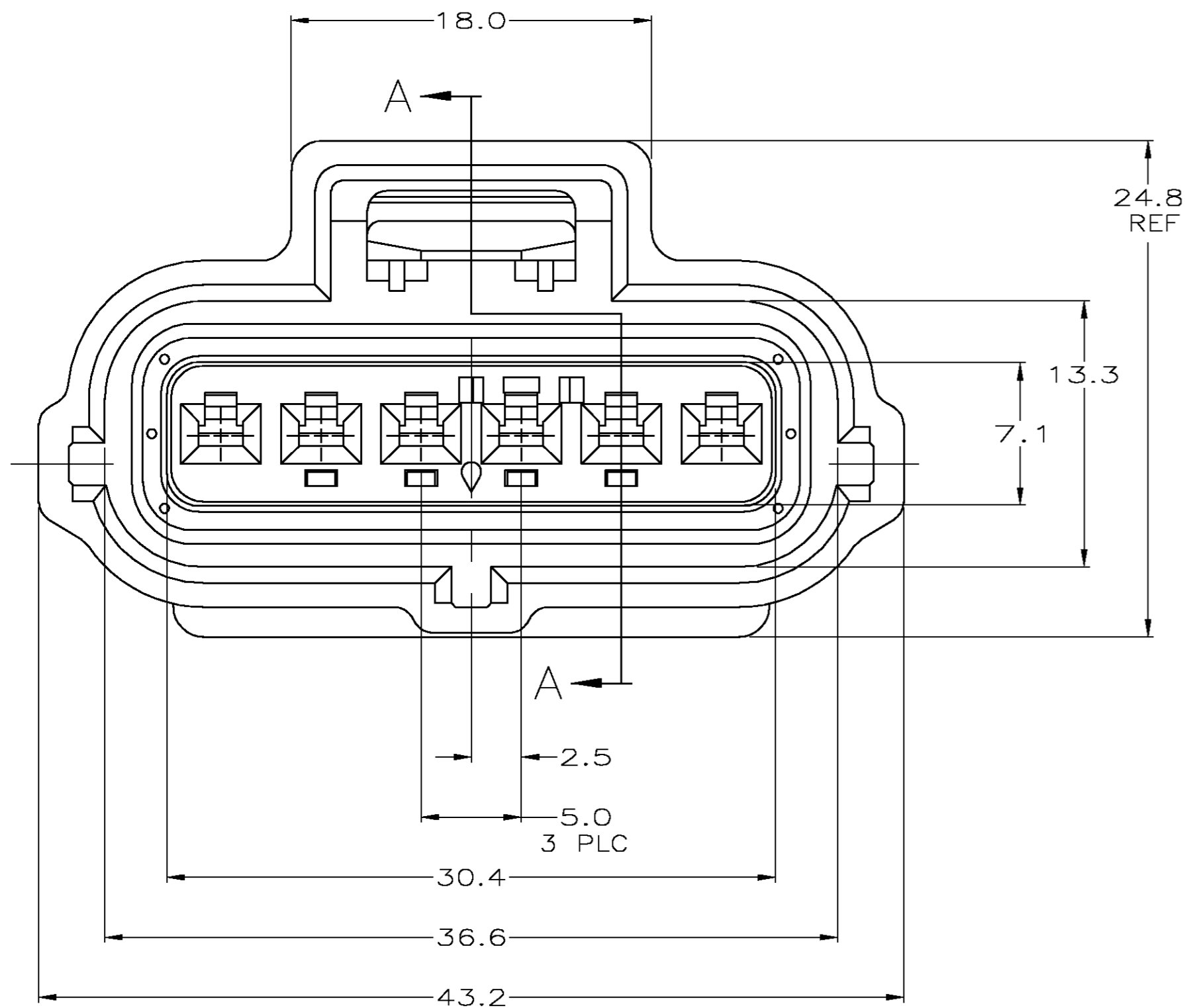


THIS DRAWING IS UNPUBLISHED. RELEASED FOR PUBLICATION
 © COPYRIGHT BY TYCO ELECTRONICS CORPORATION. ALL RIGHTS RESERVED.

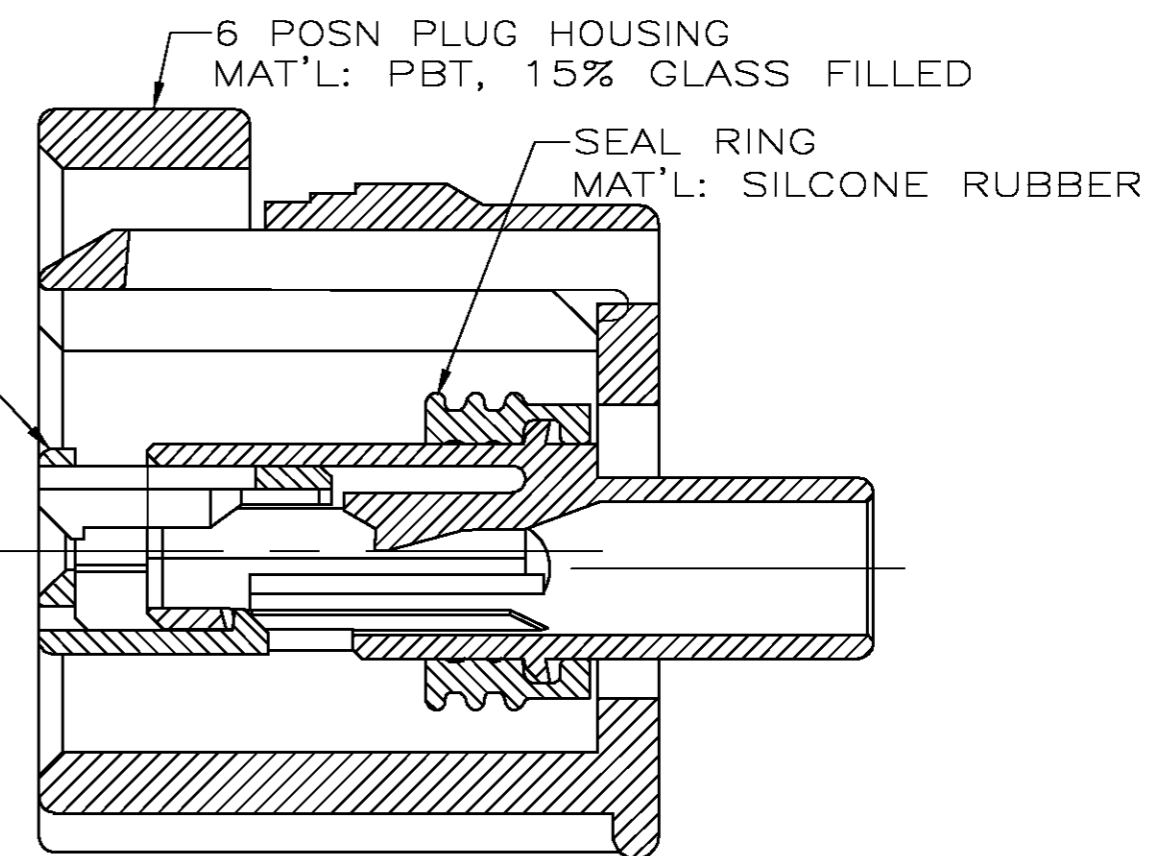
LOC		DIST		REVISIONS			
P	LTR	DESCRIPTION	DATE	DWN	APVD		
G	16	B	EC 0K40-0177-04	12AUG04	JRB	KLC	



VIEW B-B



6 POSN DBL LOCK PLATE
 MAT'L: PBT, 15% GLASS FILLED



SECTION A-A

184124-1
 PART NUMBER

THIS DRAWING IS A CONTROLLED DOCUMENT.		DWN	KD LYTLE	3/29/96	tyco Electronics	Tyco Electronics Corporation	
DIMENSIONS: mm		CHK	CT HYRB	4/4/96		Harrisburg, Pa 17105-3608	
TOLERANCES UNLESS OTHERWISE SPECIFIED:		APVD	CT HYRB	4/4/96	NAME		
0 PLC	± -	PRODUCT SPEC		1 X 6 PLG ASY KEY B-C3			
1 PLC	± -	APPLICATION SPEC		-			
2 PLC	± 0.3	WEIGHT		-			
3 PLC	± -	MATERIAL		-			
4 PLC	± -	FINISH		-			
ANGLES	± -	CUSTOMER DRAWING		SCALE		RESTRICTED TO	
				A2 00779 C=184124		-	
				SCALE	4:1	SHEET	1 OF 1
						REV	B

X-ON Electronics

Largest Supplier of Electrical and Electronic Components

Click to view similar products for [Automotive Connectors](#) category:

Click to view products by [TE Connectivity](#) manufacturer:

Other Similar products are found below :

[003-018-000](#) [60403001](#) [60993906-B](#) [M902-2131](#) [M902-2161](#) [M902-2344](#) [72.330.1035.1](#) [73.353.4028.0](#) [F119300-B](#) [F166900](#) [F258300-B](#)
[F358300-B](#) [F407400](#) [F444110](#) [F487000](#) [F509500B-B](#) [827153-1](#) [8N1515-32-24P](#) [9-1326729-8](#) [925474-1](#) [928905-1](#) [964562-4](#) [968782-1](#)
[GT17SA-8DS-HU](#) [98891-1012](#) [98947-1016](#) [12004147](#) [12004475-L](#) [12010290](#) [12015454](#) [12020219-B](#) [12041318-B](#) [12052225-L](#) [12052466](#)
[12064869](#) [12004327-B](#) [12015308](#) [12015384](#) [12015909](#) [1-21030-1](#) [12041254](#) [12041318](#) [12047946-B](#) [12047957](#) [12047957-L](#) [12059473](#)
[12066261](#) [12110546](#) [12110546-B](#) [12131792](#)