

4

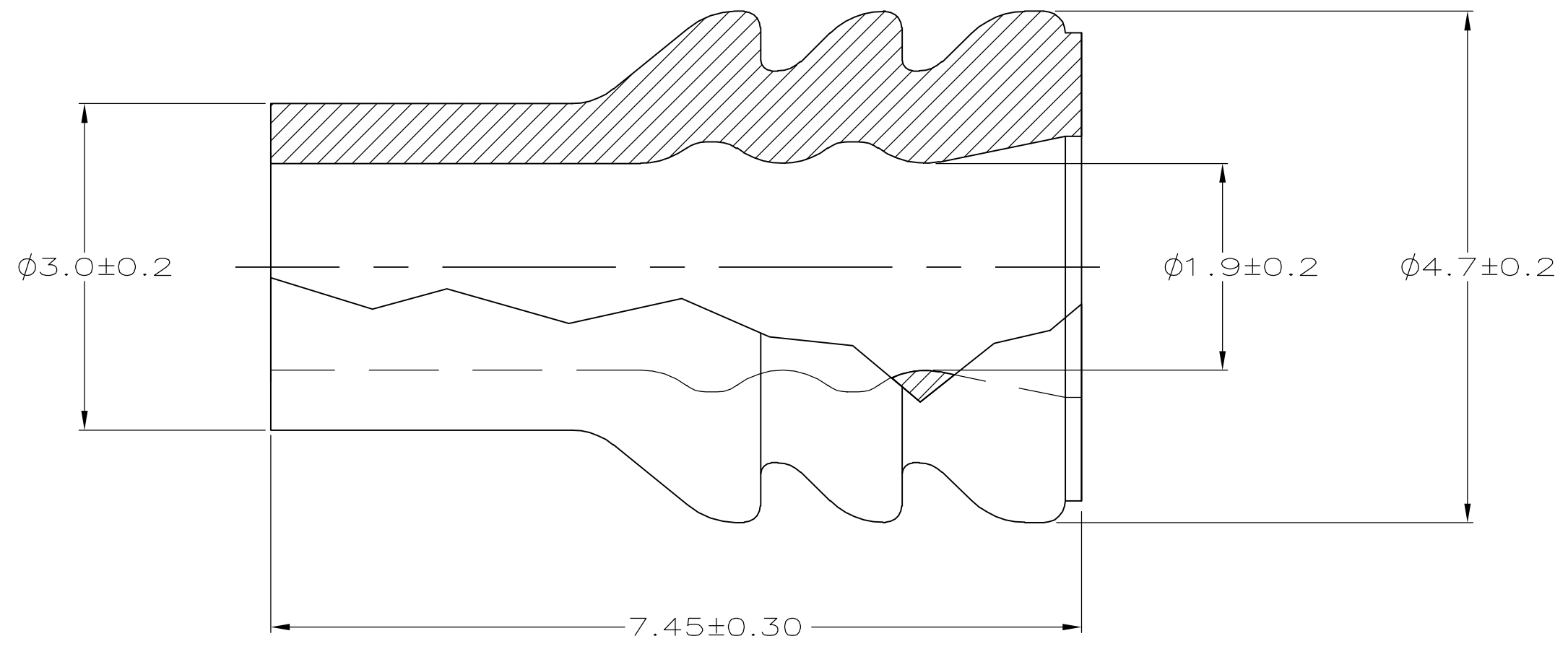
3

2

1

THIS DRAWING IS UNPUBLISHED. RELEASED FOR PUBLICATION
 © COPYRIGHT - BY TYCO ELECTRONICS CORPORATION. ALL RIGHTS RESERVED.

LOC	DIST	REVISIONS					
GE	00	P	LTR	DESCRIPTION	DATE	DWN	APVD
			B1	REVISED PER ECR-05-015256	07DEC2005	AH	DR



1. FOR INSULATION $\phi 2.2$ TO $\phi 2.7$.
 2. PART NUMBER 184141-2 IS RESTRICTED TO LEAR, CHIHUAHUA AND HONDURAS. SEE RESTRICTED CUSTOMER DRAWING 184141-2 FOR PART DESCRIPTION.

2	184141-2
	184141-1
	PART NO.

THIS DRAWING IS A CONTROLLED DOCUMENT.		DWN	KD LYTLE	6/30/95	 Tyco Electronics Corporation Harrisburg, PA 17105-3608
DIMENSIONS: mm		CHK	JP KUNKLE	7/12/95	
		APVD	JP KUNKLE	7/12/95	
TOLERANCES UNLESS OTHERWISE SPECIFIED:		PRODUCT SPEC		NAME	
0 PLC ± -		-		WIRE SEAL, SSC	
1 PLC ± -		APPLICATION SPEC		SIZE	
2 PLC ± 0.15		-		CAGE CODE	
3 PLC ± -		WEIGHT		DRAWING NO	
4 PLC ± -		-		A3 00779 C-184141	
ANGLES ± 1'		CUSTOMER DRAWING		RESTRICTED TO	
MATERIAL		SCALE		SHEET	
SILICONE RUBBER		20:1		1 of 1	
CONTAINS 5% OIL		REV		B1	
FINISH		COLOR: PURPLE			

X-ON Electronics

Largest Supplier of Electrical and Electronic Components

Click to view similar products for [Automotive Connectors](#) category:

Click to view products by [TE Connectivity](#) manufacturer:

Other Similar products are found below :

[003-018-000](#) [60403001](#) [60993906-B](#) [M902-2131](#) [M902-2161](#) [M902-2344](#) [72.330.1035.1](#) [73.353.4028.0](#) [F119300-B](#) [F166900](#) [F258300-B](#)
[F358300-B](#) [F407400](#) [F444110](#) [F487000](#) [F509500B-B](#) [827153-1](#) [8N1515-32-24P](#) [9-1326729-8](#) [925474-1](#) [928905-1](#) [964562-4](#) [968782-1](#)
[GT17SA-8DS-HU](#) [98891-1012](#) [98947-1016](#) [12004147](#) [12004475-L](#) [12010290](#) [12010309-B](#) [12015454](#) [12020219-B](#) [12041318-B](#) [12052225-](#)
[L](#) [12052466](#) [12064869](#) [12004327-B](#) [12015308](#) [12015384](#) [12015909](#) [1-21030-1](#) [12041254](#) [12041318](#) [12047946-B](#) [12047957](#) [12047957-L](#)
[12059473](#) [12066261](#) [12110546](#) [12110546-B](#)