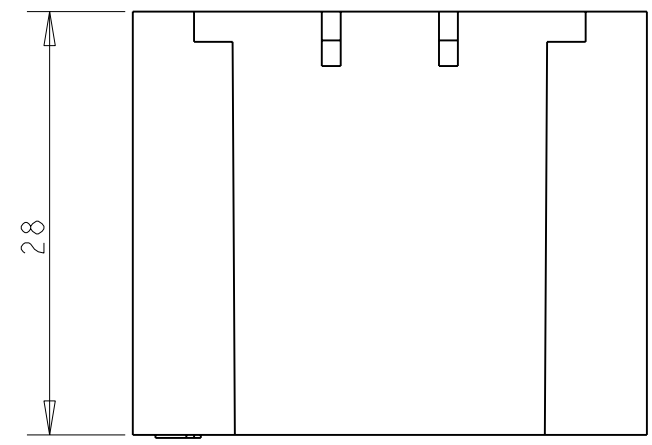
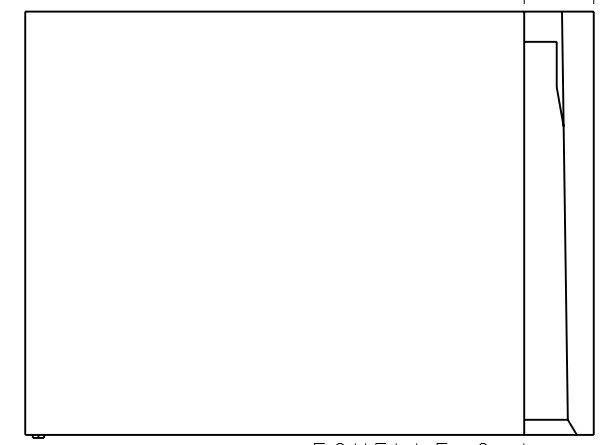
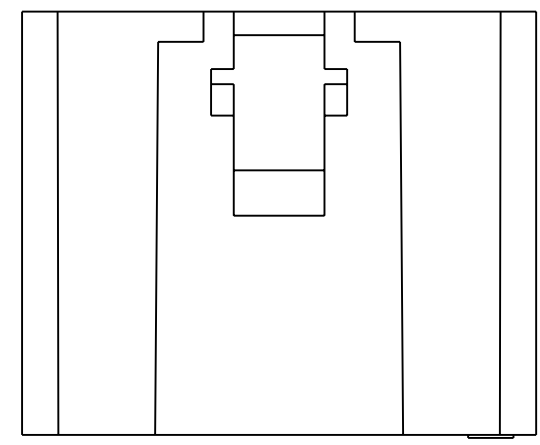
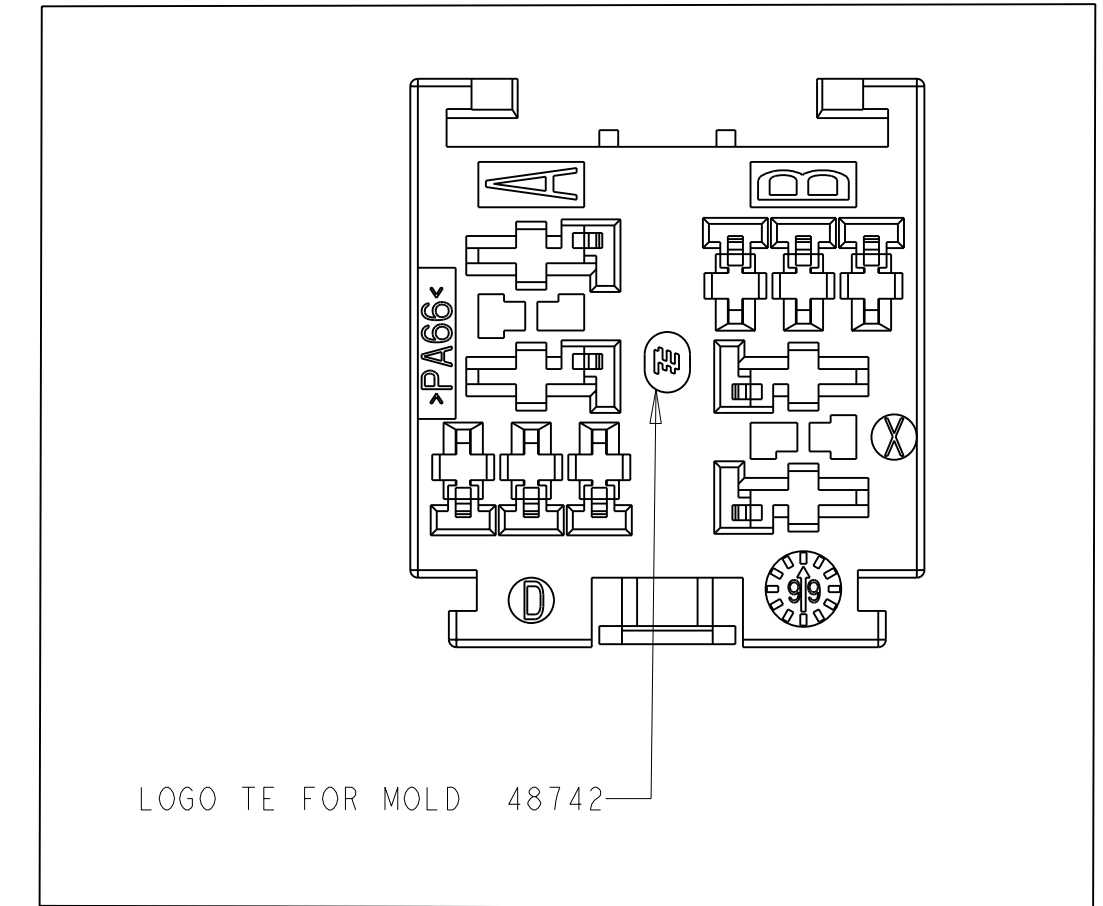
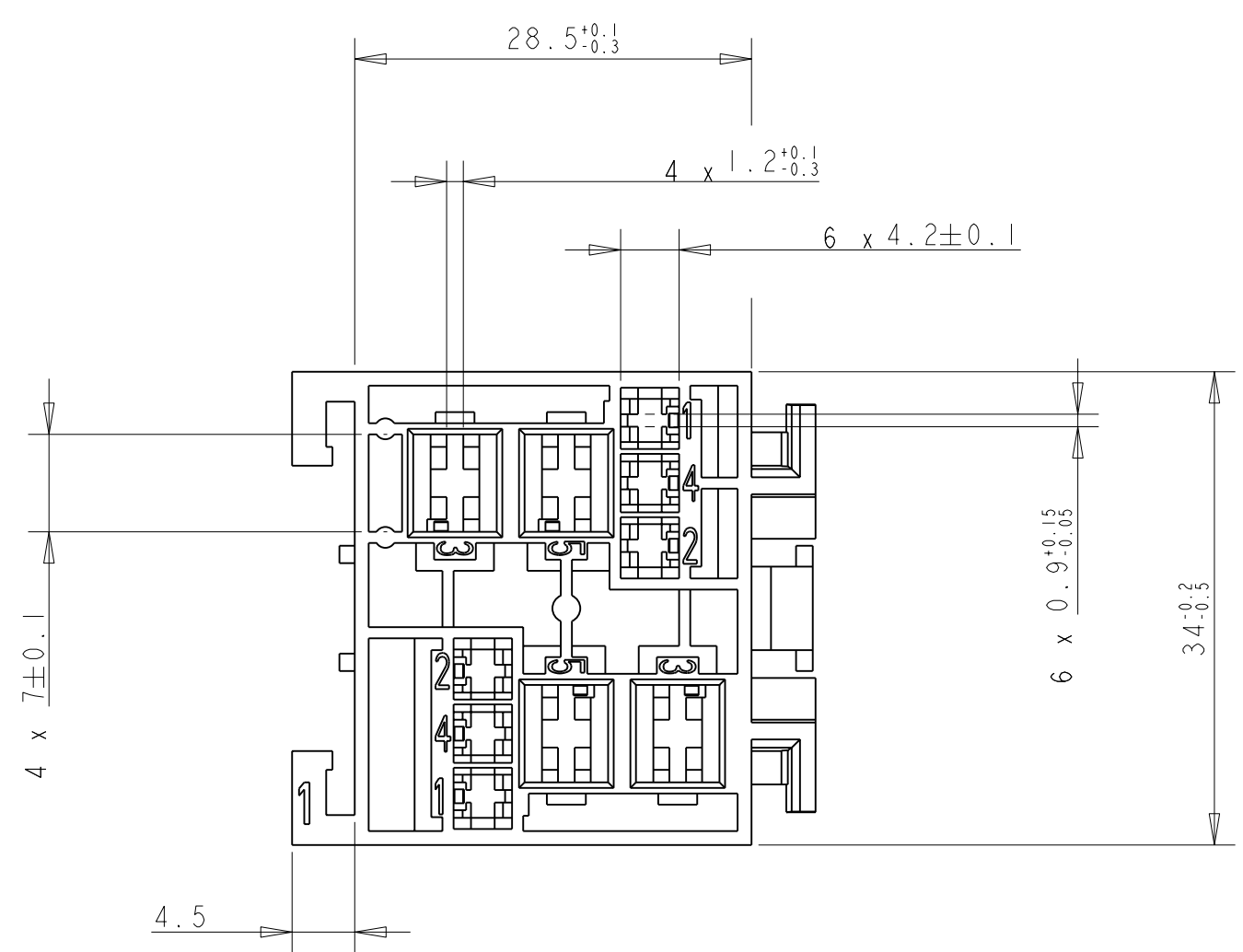


THIS DRAWING IS UNPUBLISHED.
 DIFFUSION RESTREINTE
 © COPYRIGHT 20

RELEASED FOR PUBLICATION
 LIBRE A LA DIFFUSION
 20
 ALL RIGHTS RESERVED.
 TOUS DROITS RESERVES

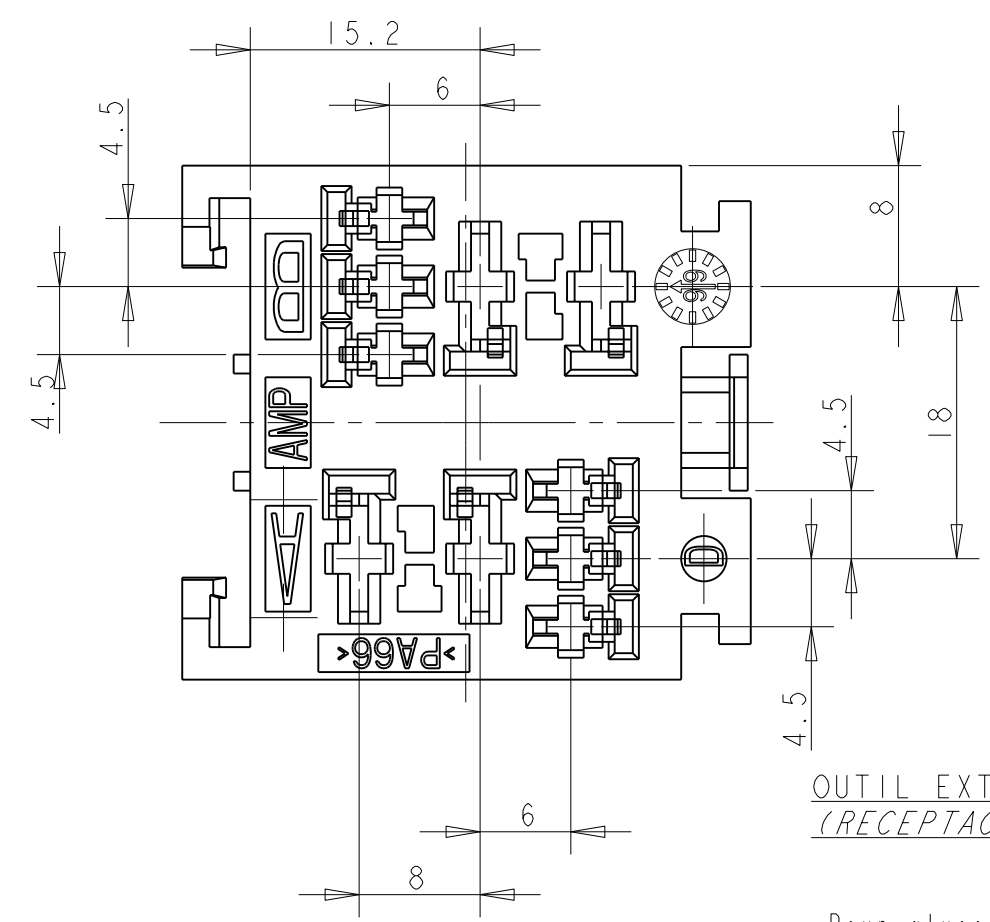
| LOC | DIST | REVISIONS | | | | | |
|-----|------|-----------|-----|-------------------------------|-----------|--------------|--------------|
| F | 00 | P | LTR | DESCRIPTION MODIFICATIONS | DATE | DWN DESS. | APVD APP. |
| | | A | | VUE AVEC LOGO TE | 04MAY2009 | P.B | - |
| | | B | | 0.9+0.15-0.05 ETAIT 0.9+-0.05 | 06JUL2011 | PB | JP P |



**COMPOSANTS ASSOCIES
 (APPLIED COMPONENTS)**

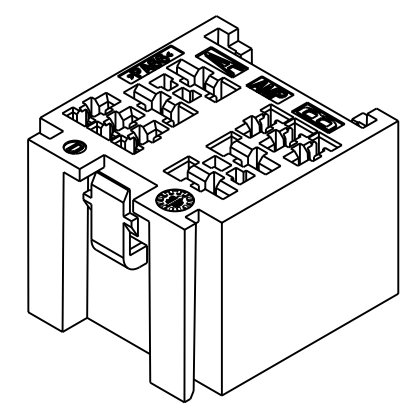
| DESIGNATION (DESCRIPTION) | Ref TE (TE PN) |
|------------------------------|-------------------|
| JPT 0.35-1mm ² | 144431-1 |
| JPT 1-3mm ² | 144432-1 |
| SPT 0.5-1mm ² | 927831-2 |
| SPT 1-3mm ² | 144617-1 |
| SPT 3-5mm ² | 144433-1 |
| SPT 5-7mm ² | 144434-1 |

| | | |
|--|-------------------------------|---------------------------|
| GRIS (GREY) | PA 6.6 | 185402-3 |
| NOIR (BLACK) | PA 6.6 | 185402-2 |
| CRISTAL (NATUREL) (CRYSTAL (NATURAL)) | PA 6.6 | 185402-1 |
| COULEUR (COLOR) | MATIERE (MATERIAL) | REF TE (TE PN) |



**OUIL EXTRACTEUR DE CLIPS:
 (RECEPTACLE EXTRACTION TOOL)**

- Pour alveole Relais 2.8 Ref:951746-1
(FOR RELAY CAVITY)
- Pour alveole Relais 6.35 Ref:951745-1
(FOR RELAY CAVITY)



REFERENCE REPRESENTEE: 185402-1

| | | | |
|---|--|--|---|
| THIS DRAWING IS A CONTROLLED DOCUMENT. <small>CE PLAN EST UN DOCUMENT CONTROLE PAR TYCO ELECTRONICS. IL EST SUSCEPTIBLE D'ETRE REVISE. CONTACTER LE SERVICE TECHNIQUE DE TYCO ELECTRONICS POUR OBTENIR LA DERNIERE REVISION.</small> | | DWN /DESSINE R. PATIN 31MAR2004 | TE Connectivity |
| DIMENSIONS: mm | | CHK /VERIFIE JP. PICAUD 31MAR2004 | |
| TOLERANCES UNLESS OTHERWISE SPECIFIED: TOLERANCES NON SPECIFIEES (SUIV NB DE DECIMALES) 0 PLC/DEC: ± 1 PLC/DEC: ±0.2 2 PLC/DEC: ± 3 PLC/DEC: ± 4 PLC/DEC: ± ANGLES ±5° | | APVD /APROUVE J. DAHER 31MAR2004 | NAME TITRE MODULE UNITAIRE 2 MICRO-RELAIS |
| MATERIAL/MATIERE VOIR TABLE | | PRODUCT SPEC SPEC. PRODUIT 108-15131 | SIZE FORMAT A2 |
| FINISH/FINITION VOIR TABLE | | APPLICATION SPEC SPEC. APPLICATION 411-15551 | CAGE CODE 00779 |
| | | WEIGHT MASSE APPROX. 16g | DRAWING NO No PLAN C-185402 |
| | | CUSTOMER DRAWING /PLAN CLIENT | RESTRICTED TO RESERVE A - |
| | | UNIQUEMENT POUR REFERENCE | SCALE ECHELLE 2:1 |
| | | | SHEET FEUILLE 1 |
| | | | OF DE 1 |
| | | | REV B |

X-ON Electronics

Largest Supplier of Electrical and Electronic Components

Click to view similar products for [Relay Sockets & Fixings](#) category:

Click to view products by [TE Connectivity](#) manufacturer:

Other Similar products are found below :

[00008258500](#) [00111976502](#) [0000-825-81-00](#) [60SY4S05](#) [M41G](#) [670-0125](#) [670-0127](#) [6700152](#) [670-0153](#) [6700156](#) [D258-2TS00](#) [70-309](#) [7-1393143-3](#) [7-1616360-5](#) [8000-DG2-5](#) [911361](#) [9-1616339-5](#) [PJF11N](#) [GDA12HA](#) [GDA12HD](#) [GDA12SA](#) [GDA12SD](#) [GDA16HD](#) [GDA22HA](#) [GDA95A](#) [GDA95D](#) [GFX20](#) [PT08QN](#) [PT 1/8 D = 3.2](#) [GUA1](#) [GUA2-11](#) [GUA4-04](#) [GUA4-31](#) [GUM5R](#) [GUR-120](#) [GUR-24](#) [GUR-240](#) [GUR-277](#) [GURX-277](#) [GUW12](#) [GUW95](#) [GUZ63L](#) [R99-11 FOR MY\(NAMEPLATE\)](#) [D52PR2T](#) [RES100K](#) [1310H-HDC](#) [1390H-1ST](#) [1393824-3](#) [1390H-2PC](#) [1410-2SM](#)