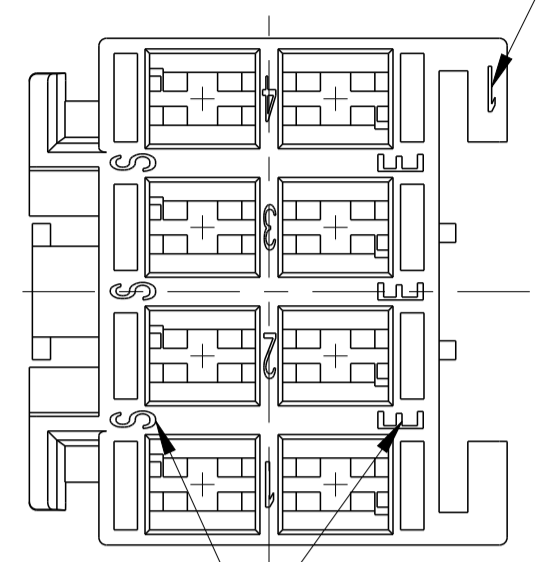


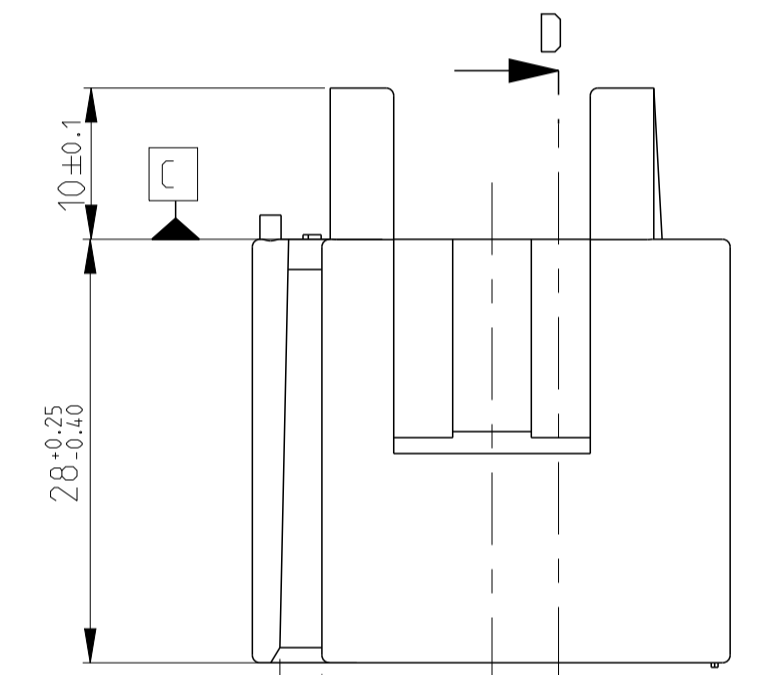
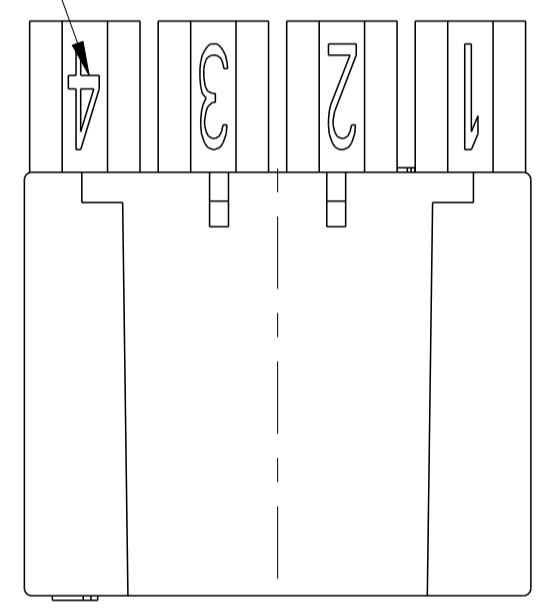
LOC		DIST		REVISIONS			
F	00	P	LTN	DESCRIPTION	DATE	DWN	APVD
		B		CORRECTION OF THE PART NUMBER 185847-2	14NOV2012	PB	JPP

NUMERO D'EMPREINTES
MOLD CAVITY NUMBER



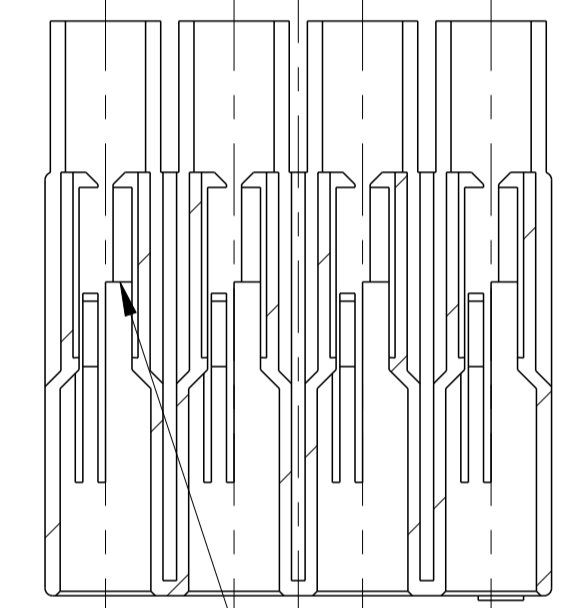
REPERAGE ENTREES/SORTIES FUSIBLES
ENTER/EXIT OF FUSE

REPERAGE DE FUSIBLES
FUSE NUMBER

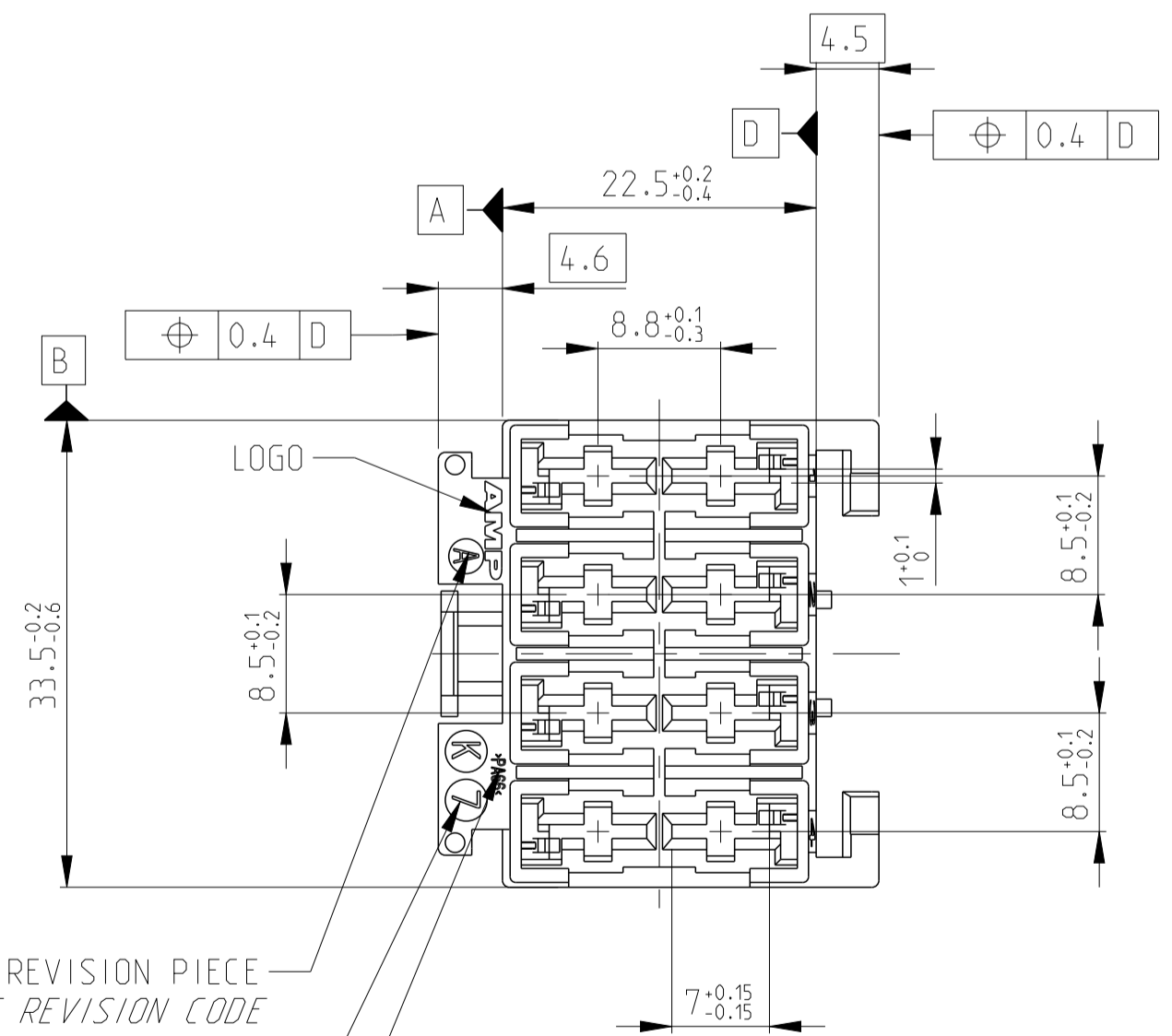


2.8^{+0.1} Pincement admis 0.2 Max

COUPE D-D
SECTION



ALVEOLE SPT AVEC LANCE
DE DETECTION UN CONTACT
MAL INSERE
ALVEOLE SPT WITH AN EVIL BE
INSERTED CONTACT DETECTION



INDICE DE REVISION PIECE
PART REVISION CODE
DATEUR
DATE CODE
MARQUAGE MATIERE
MATERIAL IDENTIFICATION

185847-2	NOIR BLACK
185847-1	NATUREL NATURAL
REFERENCE TE TE PART NUMBER	COULEUR COLOR

THIS DRAWING IS A CONTROLLED DOCUMENT.

OWN: Philippe BACHELOT 28 JAN 2010
 CHK: JP PICAUD 28 JAN 2010
 APVD: JJ REVIL 28 JAN 2010

STE TE Connectivity

NAME: MODULE SUPPORT 4 AUTOFUSES
 4 AUTOFUSE HOLDER

PRODUCT SPEC: 108-15160
 APPLICATION SPEC: 411-15587

WEIGHT: 14.6g

CAGE CODE: 00779
 DRAWING NO: 185847

SCALE: 2:1 SHEET 1 OF 1 REV B

X-ON Electronics

Largest Supplier of Electrical and Electronic Components

Click to view similar products for [Automotive Connectors](#) category:

Click to view products by [TE Connectivity](#) manufacturer:

Other Similar products are found below :

[003-018-000](#) [60403001](#) [60993906-B](#) [M902-2131](#) [M902-2161](#) [M902-2344](#) [72.330.1035.1](#) [73.353.4028.0](#) [F119300-B](#) [F166900](#) [F258300-B](#)
[F358300-B](#) [F407400](#) [F444110](#) [F487000](#) [F509500B-B](#) [827153-1](#) [8N1515-32-24P](#) [9-1326729-8](#) [925474-1](#) [928905-1](#) [964562-4](#) [968782-1](#)
[GT17SA-8DS-HU](#) [98891-1012](#) [98947-1016](#) [12004147](#) [12004475-L](#) [12010290](#) [12010309-B](#) [12015454](#) [12020219-B](#) [12041318-B](#) [12052225-](#)
[L](#) [12052466](#) [12064869](#) [12004327-B](#) [12015308](#) [12015384](#) [12015909](#) [1-21030-1](#) [12041254](#) [12041318](#) [12047946-B](#) [12047957](#) [12047957-L](#)
[12059473](#) [12066261](#) [12110546](#) [12110546-B](#)