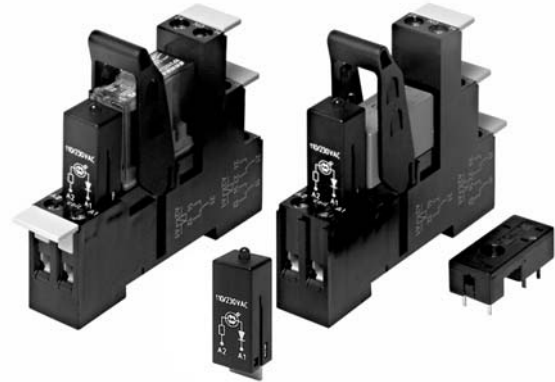


**Accessories Industrial Power Relay RT / RP / SR2M**

- For Industrial Power Relay RT / RP / SR2M, pinnings 3.5mm / 5mm; relay heights 15.7 / 25.5mm
- Din-rail socket with logical setup of connections (input/output)
- New retainer clip with ejection function
- Easy replacement of relays on a densely packed DIN rail
- High quality rising clamp terminals
- Captive combination terminal screws
- No reduction of protection class or creepage/clearance with plastic retainer
- Simple plug-in indicator- and protection modules
- White snap-on marking tags
- Sockets and accessories: RoHS compliant (Directive 2002/95/EC)  
LED- and protection modules: not RoHS compliant



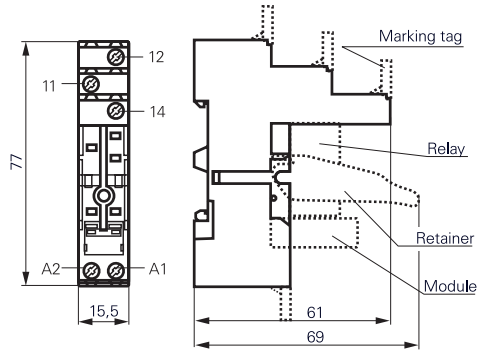
F0228-B

**Socket with screw-type terminals for DIN rail mounting**

**RT 78 724** Socket with screw-type terminals, pinning 3.5 mm for DIN rail mounting



F0261-A

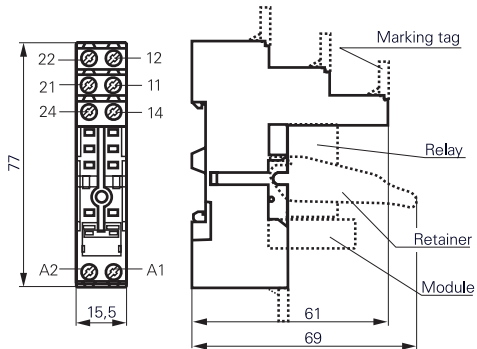


S0416-AA

**RT 78 726** Socket with screw-type terminals, pinning 5 mm for DIN rail mounting



F0262-A



S0416-AB

**Approvals**

VDE REG.-Nr. 6106 in preparation, **CE** US E135149

**Technical data**

**RT 78 724 / RT 78 726**

|   |  |
|---|--|
| Rated current                             | 12 A *)                                |
| Rated voltage / max.switching voltage AC  | 240/400 VAC                            |
| Dielectric strength coil-contact circuit  | 4000 V <sub>rms</sub>                  |
| open contact circuit                      | 1000 V <sub>rms</sub>                  |
| adjacent contact circuits                 | 2500 V <sub>rms</sub>                  |
| Clearance / creepage coil-contact circuit | RT: ≥ 10 / 10 mm; RP, SR2M: ≥ 8 / 8 mm |

\*) For 1 pole relays (16 A) the relay terminals 11-21, 12-22 and 14-24 have to be bridged.  
For 1 pole relays (12 A) the relay terminals 11-12-14 have to be connected to the socket terminals 21-12-24

■ Not suitable for bistable relays with 2 coils!

| Technical data (Continued)              |  | RT 78 724 / RT 78 726   |
|---|--|-------------------------|
| Material group of insulation parts      |  | ≥ IIIa                  |
| Insulation to IEC 60664-1               |  |                         |
| Type of insulation coil-contact circuit |  | reinforced              |
| open contact circuit                    |  | functional              |
| adjacent contact circuits               |  | functional              |
| Rated insulation voltage                |  | 250 V                   |
| Pollution degree                        |  | 2                       |
| Rated voltage system                    |  | 230/400 V               |
| Overvoltage category                    |  | III                     |
| RoHS - Directive 2002/95/EC             |  |                         |
| Sockets, retainers and marking tags:    |  | compliant               |
| Degree of protection DIN 40050          |  | IP20                    |
| Ambient temperature range               |  | -20...+85°C             |
| Terminals                               |  | screw                   |
| Terminal screw torque acc. IEC 61984    |  | 0.5 Nm                  |
| max.                                    |  | 0.7 Nm                  |
| Wire cross section                      |  |                         |
| single wire                             |  | 2 x 2.5 mm <sup>2</sup> |
| fine wire                               |  | 2 x 2.5 mm <sup>2</sup> |
| with bootlace crimp (DIN 46228/1)       |  | 2 x 1.5 mm <sup>2</sup> |
| Insertion cycles                        |  | A (10)                  |
| Max. Insertion Force total              |  | 100 N                   |
| Mounting distance                       |  | 0, dense packing        |
| Weight                                  |  | 36 g                    |
| Packaging unit                          |  | 10 pcs                  |

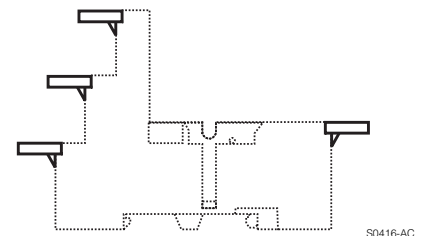
| Socket with screw-type terminals for DIN rail mounting |  |             |
|--|--|-------------|
| Type   |  | Part Number |
| <b>RT 78 724</b>                                       | Socket with screw-type terminals, pinning 3.5 mm for DIN rail mounting | 8-1415035-1 |
| <b>RT 78 726</b>                                       | Socket with screw-type terminals, pinning 5 mm for DIN rail mounting   | 6-1415035-1 |

| Accessories for RT 78 724, RT 78 726 |   |             |
|--------------------------------------|---|-------------|
| Type                                 |   | Part Number |
| <b>RT 17 016</b>                     | Plastic retaining clip, relay height 15.7 and 25.5 mm | 1-1415038-1 |
| <b>RT 17 040</b>                     | Marking tag   | 2-1415038-1 |

| LED- and Protection Modules for RT 78 724, RT 78 726 |      |                                       |             |
|--|------|---------------------------------------|-------------|
| Easy insertion of module into the socket             |      |                                       |             |
| Wiring in parallel to the coil                       |      |                                       |             |
| Type   |      |                                       | Part Number |
| <b>PTM TO 0A0</b>                                    | EM09 | Protection diode (standard, A1+, A2-) | 9-1415036-1 |
| <b>PTM TO 0L0</b>                                    | EM01 | Protection diode (A1-, A2+)           | 0-1415037-1 |
| <b>PTM U0 524</b>                                    | EM02 | RC-network 6...60 VAC                 | 1-1415037-1 |
| <b>PTM U0 730</b>                                    | EM03 | RC-network 110...230 VAC              | 2-1415037-1 |
| <b>PTM V0 524</b>                                    | EM04 | Varistor 24 VAC                       | 3-1415037-1 |
| <b>PTM V0 615</b>                                    | EM13 | Varistor 115 VAC                      | 6-1415365-1 |
| <b>PTM V0 730</b>                                    | EM05 | Varistor 230 VAC                      | 4-1415037-1 |

| LED               |      |  |             |
|-------------------|------|--|-------------|
| Type              |      |  | Part Number |
| <b>PTM L0 524</b> | EM07 | red LED 6...24 VDC/VAC                             | 6-1415036-1 |
| <b>PTM G0 524</b> | EM11 | green LED 6...24 VDC/VAC                           | 3-1415036-1 |
| <b>PTM L0 024</b> | EM18 | red LED 6...24 VDC w. prot.diode (std, A1+, A2-)   | 5-1415036-1 |
| <b>PTM G0 024</b> | EM12 | green LED 6...24 VDC w. prot.diode (std, A1+, A2-) | 2-1415036-1 |
| <b>PTM L1 024</b> | EM08 | red LED 6...24 VDC w. prot. diode (A1-, A2+)       | 8-1415036-1 |
| <b>PTM L0 110</b> | EM19 | red LED 48...110 VDC w. protection diode           | 2-1415392-1 |
| <b>PTM L0 730</b> | EM06 | red LED 110...230 VAC                              | 7-1415036-1 |
| <b>PTM G0 730</b> | EM10 | green LED 110...230 VAC                            | 4-1415036-1 |

**Relay Packages**  
Complete packages consisting of a relay mounted on a socket: see Relay Package RT



Marking tags  
 ■ White marking area 15.5 x 6 mm  
 ■ Snaps on socket in up to 4 positions



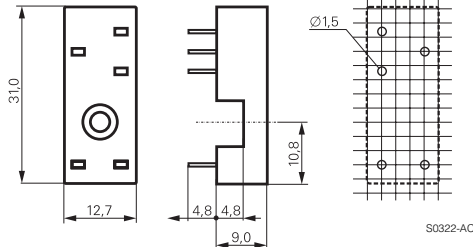
**Accessories Industrial Power Relay RT / RP / SR2M (Continued)**

**Sockets for PCB RP 78 601/602**

**RP 78 601** Socket with PCB terminals, pinning 3.5 mm



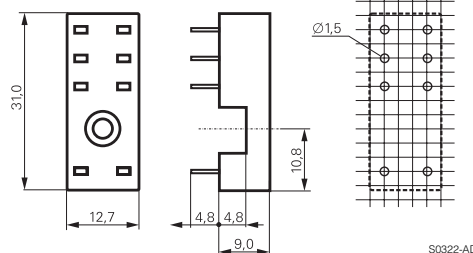
F0116-A



**RP 78 602** Socket with PCB terminals, pinning 5 mm



F0117-A



**Approvals**

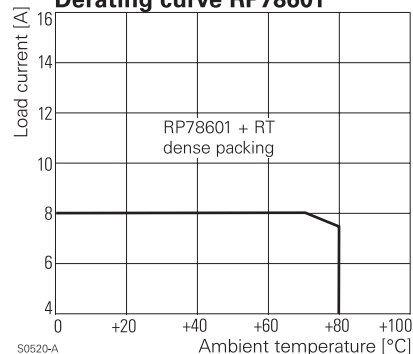


**Technical data**

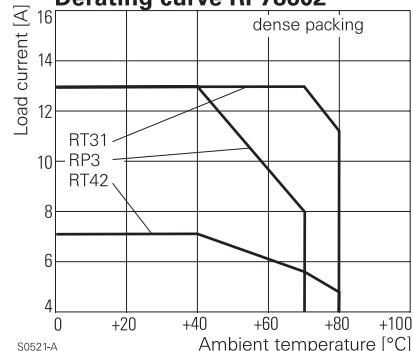
**RP 78 601 / RP 78 602**

|   |  |
|---|--|
| Rated current                             | 12 A *)                                |
| Limiting continuous current               | see derating curve                     |
| Rated voltage / max. switching voltage AC | 240/400                                |
| Dielectric strength coil-contact circuit  | 4000 V <sub>rms</sub>                  |
| open contact circuit                      | 1000 V <sub>rms</sub>                  |
| adjacent contact circuits                 | 2500 V <sub>rms</sub>                  |
| Clearance / creepage coil-contact circuit | RT: ≥ 10 / 10 mm, RP, SR2M: ≥ 8 / 8 mm |
| Material group of insulation parts        | ≥ IIIa                                 |
| Insulation to IEC 60664-1                 |  |
| Type of insulation coil-contact circuit   | reinforced                             |
| open contact circuit                      | functional                             |
| adjacent contact circuits                 | functional                             |
| Rated insulation voltage                  | 250 V                                  |
| Pollution degree                          | 2                                      |
| Rated voltage system                      | 230/400 V                              |
| Overvoltage category                      | III                                    |
| RoHS - Directive 2002/95/EC               | compliant                              |
| Degree of protection DIN 40050            | IP20                                   |
| Ambient temperature range                 | -40...+80°C                            |
| Terminals                                 | pcb                                    |
| Insertion cycles                          | A (10)                                 |
| Max. Insertion Force total                | 100 N                                  |
| Mounting distance                         | 0, dense packing                       |
| Resistance to soldering heat              | 270°C / 10 s                           |
| Weight                                    | 3 g                                    |
| Packaging unit                            | 100 pcs                                |

**Derating curve RP78601**



**Derating curve RP78602**



**Socket with PCB terminals**

| Type   | Part Number |
|--|-------------|
| <b>RP 78 601</b> Socket with PCB terminals, pinning 3.5 mm | 8-1393234-4 |
| <b>RP 78 602</b> Socket with PCB terminals, pinning 5 mm   | 8-1393234-5 |

**Accessories for RP 78 601, RP 78 602**

| Type   | Part Number |
|--|-------------|
| <b>RT 16 041</b> Plastic retaining clip RT, relay height 15.7 mm | 3-1393161-4 |
| <b>RP 16 100</b> Plastic retaining clip RP, relay height 25.5 mm | 1-1393161-7 |
| <b>RT 28 516</b> Metal retaining clip RT, relay height 15.7 mm   | 0-1419108-7 |
| <b>RP 28 500</b> Metal retaining clip RP, relay height 25.5 mm   | 1-1393161-9 |

\*) For 1 pole relays (16 A) the relay terminals 11-21, 12-22 and 14-24 have to be bridged on the PCB.

## X-ON Electronics

Largest Supplier of Electrical and Electronic Components

*Click to view similar products for [Relay Sockets & Hardware](#) category:*

*Click to view products by [TE Connectivity](#) manufacturer:*

Other Similar products are found below :

[7-1393143-3](#) [7-1616347-8](#) [7-1616350-5](#) [8-1616360-0](#) [8-1616360-6](#) [9-1616339-5](#) [9-1616358-1](#) [9-1616359-7](#) [9-1616360-2](#) [PLC-10](#) [PT08QN](#)  
[PT 1/8 D = 3.2](#) [12082001](#) [R99-11 FOR MY\(NAMEPLATE\)](#) [RES100K](#) [1393824-3](#) [13900001](#) [1415526-1](#) [1419106-5](#) [1423683-1](#) [1415037-1](#)  
[14486001](#) [1423685-1](#) [MS-24H](#) [16-1328](#) [1616339-8](#) [MT78N60](#) [17540001](#) [20584002](#) [20C419](#) [2-1393102-4](#) [2-1419106-9](#) [2-1608090-1](#)  
[P70A AC100/110](#) [PB-4H](#) [21B212](#) [RSE120027](#) [9-1616337-0](#) [9-1616337-6](#) [9-1616358-3](#) [27E1038](#) [27E448](#) [S82Y-RN](#) [2944533](#) [LMC-1](#) [16-](#)  
[1340](#) [16154040](#) [9P40X1](#) [17891020](#) [17892040](#)