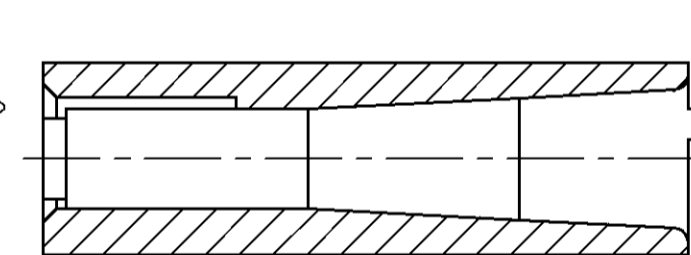
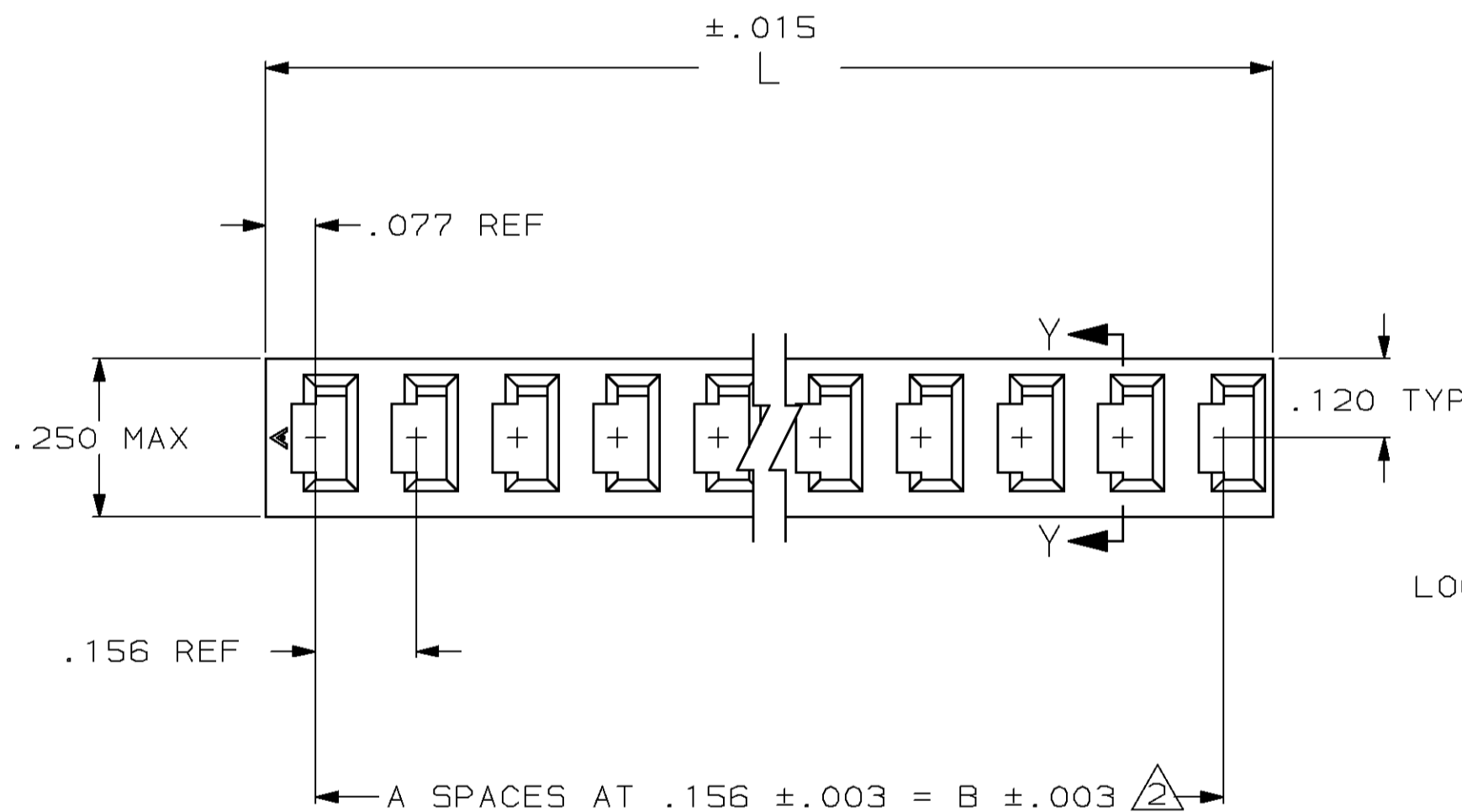
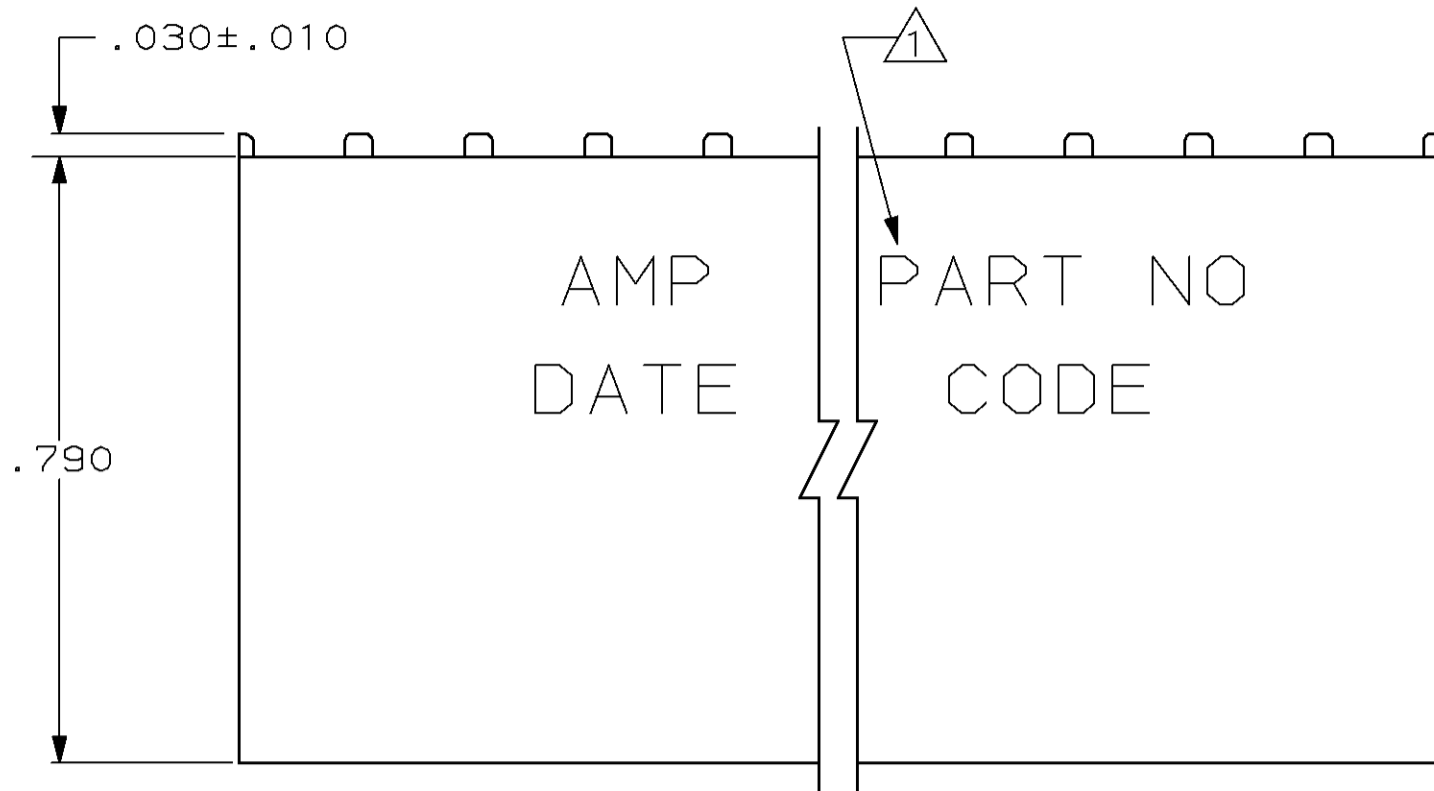


© COPYRIGHT

Loc	DIST	P	F	ZONE	LTR	REVISIONS		
AD	39					DESCRIPTION	DATE	APPD
				P2		REVISED PER ECO-11-005140	31MAR11	HMR

IDENTIFIERS ON ENDS OF HOUSING ARE OPTIONAL AT AMP'S DISCRETION



LOCKING LEDGE IDENTIFICATION
SECTION Y-Y

	3.900	3.744	24	25	4-3	4-9	5-87025-0
	3.744	3.588	23	24	4-3	-7	4-3-8
	3.588	3.432	22	23	4-3	-5	4-3-6
	3.432	3.276	21	22	4-3	-3	4-3-4
	3.276	3.120	20	21	4-3	-1	4-3-2
5 OBSOLETE	2.652	2.496	16	17	3-3	4-9	4-87025-0
	2.184	2.028	13	14	3-3	4-7	3-87025-8
OBSOLETE	1.716	1.560	10	11	3-3	4-5	3-87025-6
5	1.092	.936	6	7	3-3	4-3	3-87025-4
	2.340	2.184	14	15	3-3	4-1	3-87025-2
	2.028	1.872	12	13	2-3	4-9	3-87025-0
	.156	-	-	1	2-3	-8	2-3-7
	.312	.156	1	2	2-3	4-6	2-87025-5
	.780	.624	4	5	2-3	4-4	2-87025-3
	.468	.312	2	3	2-3	4-2	2-87025-1
5 OBSOLETE	2.496	2.340	15	16	1-3	4-9	2-87025-0
5 OBSOLETE	1.560	1.404	9	10	1-3	4-7	1-87025-8
	1.248	1.092	7	8	1-3	4-5	1-87025-6
	.624	.468	3	4	1-3	4-4	1-87025-3
	1.872	1.716	11	12	1-87025-1		1-87025-2
5 OBSOLETE	1.404	1.248	8	9	1-87025-9		1-87025-0
	3.120	2.964	19	20	3-4	-7	87025-8
OBSOLETE	2.964	2.808	18	19	3-4	-5	87025-6
5	2.808	2.652	17	18	3-4	-3	87025-4
5 OBSOLETE	.936	.780	5	6	87025-1		87025-2

- 1 INK STAMP (WHITE) "AMP", PART NUMBER AND DATE CODE, .062 HIGH CHARACTERS ON HOUSINGS 6 POSITIONS AND GREATER
- 2 TOLERANCE NON CUMULATIVE
- 3 OBSOLETE.
- 4 OBSOLETE STAMPED PARTS MAY BE SUBSTITUTED WITH UNSTAMPED PARTS.
- 5 OBSOLETE PARTS: OBSOLETE CIS STREAMLINING PER D.RENAUD/D.SINISI

DO NOT SCALE PRINT. UNLESS SPECIFIED DIMENSIONS IN INCHES TOLERANCES ON: 2 PLC DEC ± - 3 PLC DEC ± .005 ANGLES ± -	DR 12/10/87 G. DOUTY CHK 12/18/87 E. D. TREECE APPD 12/18/87 E. D. TREECE APPD 1/4/88 J. S. SCHEIFER			
MATERIAL FLAME RETARDANT THERMOPLASTIC COLOR-BLACK	PRODUCT SPEC 108-25016	NAME HOUSING, MOD I, .156 ∅ SINGLE ROW, CRIMP SNAP IN		
FINISH -	APPLICATION SPEC 114-25000	SIZE C	FSCM NO 00779	DRAWING NO 87025
	WEIGHT -	SCALE 4:1		SHEET 1 OF 1

X-ON Electronics

Largest Supplier of Electrical and Electronic Components

Click to view similar products for [Headers & Wire Housings](#) category:

Click to view products by [TE Connectivity](#) manufacturer:

Other Similar products are found below :

[892-18-020-10-001101](#) [58102-G61-06LF](#) [582553-1](#) [0009485154](#) [009176003701906](#) [0050291907](#) [LY20-4P-DT1-P1E-BR](#) [02.125.8002.8](#)
[609-3404](#) [61062-3](#) [61082-181009](#) [622-3653LF](#) [63453-116](#) [636-1030](#) [636-1427](#) [636-3427](#) [636-4007](#) [641938-9](#) [641991-4](#) [644827-2](#) [65817-010LF](#) [65817-015LF](#) [65863-015LF](#) [66207-023LF](#) [67095-007LF](#) [67601157](#) [68645-018](#) [68648-049](#) [70.362.1628.0](#) [70-4210](#) [70-4226B](#) [70-4853B](#) [707-5020](#) [707-5028](#) [71.350.2428.0](#) [71918-208LF](#) [71961-016LF](#) [733-134](#) [733-162](#) [754199-000](#) [760-3052](#) [787-8014-00](#) [79531-3000](#)
[FCN-360C032-B](#) [FCN-367T-T012/H](#) [FCN-723D010/2](#) [80.063.4001.1](#) [800-90-001-10-001000](#) [800-90-010-10-002000](#) [801-43-002-10-013000](#)