

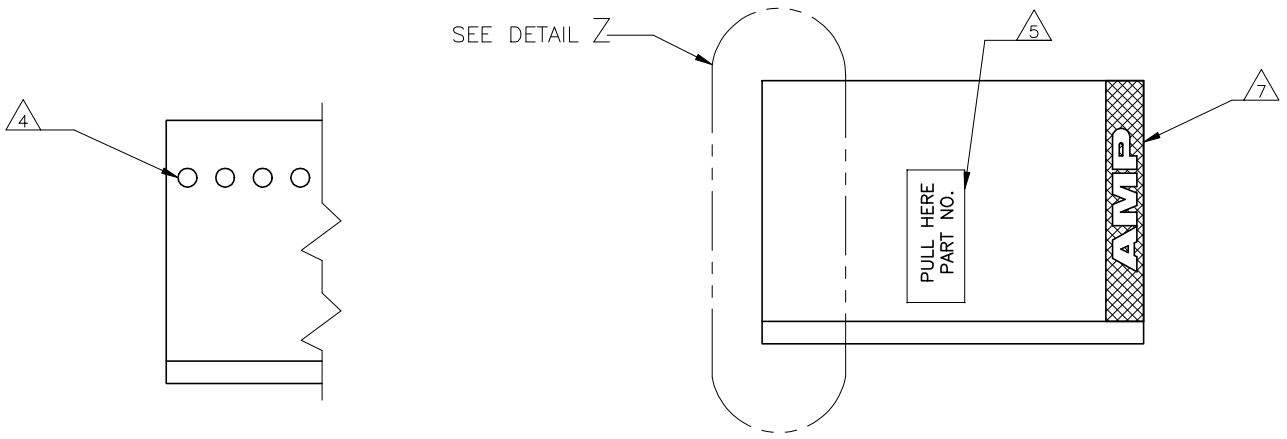
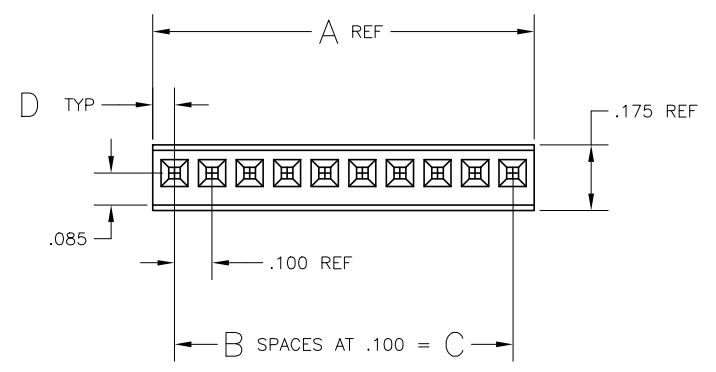
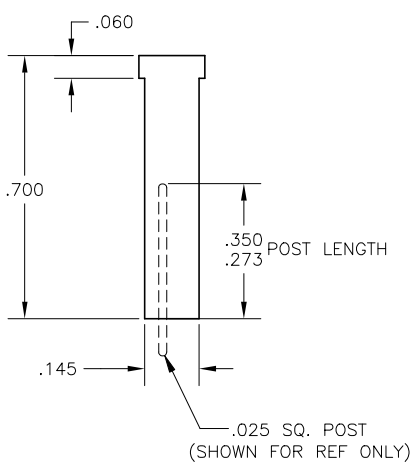
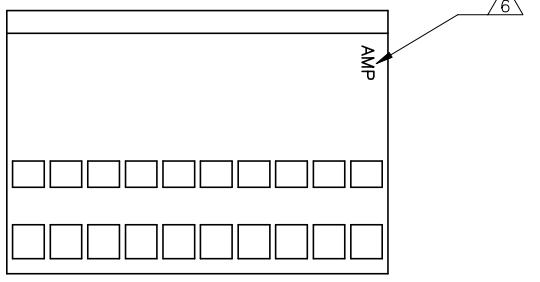
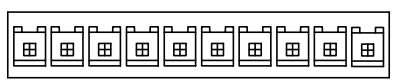
THIS DRAWING IS UNPUBLISHED. RELEASED FOR PUBLICATION  
 © COPYRIGHT - TE Connectivity Ltd. ALL RIGHTS RESERVED.

REVISIONS					
#	LTR	DESCRIPTION	DATE	DNW	APVD
V		REVISED PER ECO-18-000976	28MAY2018	RS	JO
V1		REVISED PER ECO-19-016615	05NOV2019	RS	JO

PRODUCT INSTRUCTION

PULL ON HOUSING TO REMOVE FROM POSTS.  
 DO NOT CONFINE THE CONDUCTORS OR PULL ON THE  
 CONDUCTORS DURING REMOVAL ACTION.

1. HOUSING ACCEPTS LOCKING CLIP CONTACT PART NO.S 87124, 87165, 87190, 87191, & MATES WITH .025 SQ. POSTS.
- 2 HOUSING: GLASS FILLED NYLON.
- 3 HOUSING: GLASS FILLED POLYESTER.
- 4 CORE PIN SUPPORT HOLES ARE OPTIONAL, AND MAY BE ROUND OR SQUARE OR MAY NOT BE PRESENT AT ALL.
- 5 MARKED AS SHOWN, THIS SIDE ONLY, APPROXIMATELY IN CENTER OF HOUSING. 'PULL HERE' AND PART NO. TO APPEAR ON HOUSING 6 POS AND LARGER.
- 6 RAISED AMP LOGO MOLDED IN HOUSING.
- 7 TEXTURED AMP LOGO MOLDED IN HOUSING. LOGO MAY APPEAR ON EITHER END OF HOUSING.



DETAIL Z

NOTES	MAT'L	COLOR	D	C	B	A	POS	PART NUMBER (UNMARKED)	PART NUMBER (STAMPED)	
SUPERSEDED BY 87175-2	△	△	BROWN	.058	.300	3	.416	4	6-87175-3	-
SUPERSEDED BY 87175-2	△	△	YELLOW	.054	0	0	.108	1	3-87175-4	-
SUPERSEDED BY 87175-2	△	△	ORANGE	.054	0	0	.108	1	3-87175-3	-
SUPERSEDED BY 87175-2	△	△	RED	.054	0	0	.108	1	3-87175-2	-
	△	△	BROWN	.054	0	0	.108	1	-	-
	△	△	BLACK	.058	1.300	13	1.416	14	3-87175-0	△2-87175-9
	△	△	BLACK	.058	1.200	12	1.316	13	2-87175-8	△2-87175-7
	△	△	BLACK	.058	1.100	11	1.216	12	2-87175-6	△2-87175-5
	△	△	BLACK	.058	1.000	10	1.016	11	2-87175-4	△2-87175-3
	△	△	BLACK	.058	.900	9	1.016	10	2-87175-2	△2-87175-1
	△	△	BLACK	.058	.800	8	.916	9	2-87175-0	△1-87175-9
	△	△	BLACK	.058	.700	7	.816	8	1-87175-8	△1-87175-7
	△	△	BLACK	.058	.600	6	.716	7	1-87175-6	△1-87175-5
	△	△	BLACK	.058	.500	5	.616	6	1-87175-4	△1-87175-3
	△	△	BLACK	.058	.400	4	.516	5	1-87175-2	-
	△	△	BLACK	.058	.300	3	.416	4	1-87175-0	-
	△	△	BLACK	.058	.200	2	.316	3	87175-8	-
	△	△	BLACK	.058	.100	1	.216	2	87175-6	-
	△	△	BLACK	.058	1.400	14	1.516	15	87175-4	87175-3
	△	△	BLACK	.054	0	0	.108	1	87175-2	-

THIS DRAWING IS A CONTROLLED DOCUMENT. DWN D KEITZER 11-16-89  
 CHK S. BEAM 11-29-89  
 S. BEAM 11-29-89

TE Connectivity

HOUSING-LOCKING CLIP .025 SQ. POST, .100 CENTERS (CLOSE END) SINGLE ROW

PRODUCT SPEC 108-36028  
 APPLICATION SPEC 114-25006

SIZE A1 CAGE CODE 00779 DRAWING NO. 87175 RESTRICTED TO  
 WEIGHT -

MATERIAL: SEE TABLE FINISH: -

CUSTOMER DRAWING SCALE 4:1 SHEET 1 OF 1 REV V1

## X-ON Electronics

Largest Supplier of Electrical and Electronic Components

*Click to view similar products for [Headers & Wire Housings](#) category:*

*Click to view products by [TE Connectivity](#) manufacturer:*

Other Similar products are found below :

[892-18-020-10-001101](#) [58102-G61-06LF](#) [582553-1](#) [0009485154](#) [009176003701906](#) [0050291907](#) [LY20-4P-DT1-P1E-BR](#) [02.125.8002.8](#)  
[609-3404](#) [61062-3](#) [61082-181009](#) [622-3653LF](#) [63453-116](#) [636-1030](#) [636-1427](#) [636-3427](#) [636-4007](#) [641938-9](#) [641991-4](#) [644827-2](#) [65817-010LF](#) [65817-015LF](#) [65863-015LF](#) [66207-023LF](#) [67095-007LF](#) [67601157](#) [68645-018](#) [68648-049](#) [70.362.1628.0](#) [70-4210](#) [70-4226B](#) [70-4853B](#) [707-5020](#) [707-5028](#) [71.350.2428.0](#) [71918-208LF](#) [71961-016LF](#) [733-134](#) [733-162](#) [754199-000](#) [760-3052](#) [787-8014-00](#) [79531-3000](#)  
[FCN-360C032-B](#) [FCN-367T-T012/H](#) [FCN-723D010/2](#) [80.063.4001.1](#) [800-90-001-10-001000](#) [800-90-010-10-002000](#) [801-43-002-10-013000](#)