

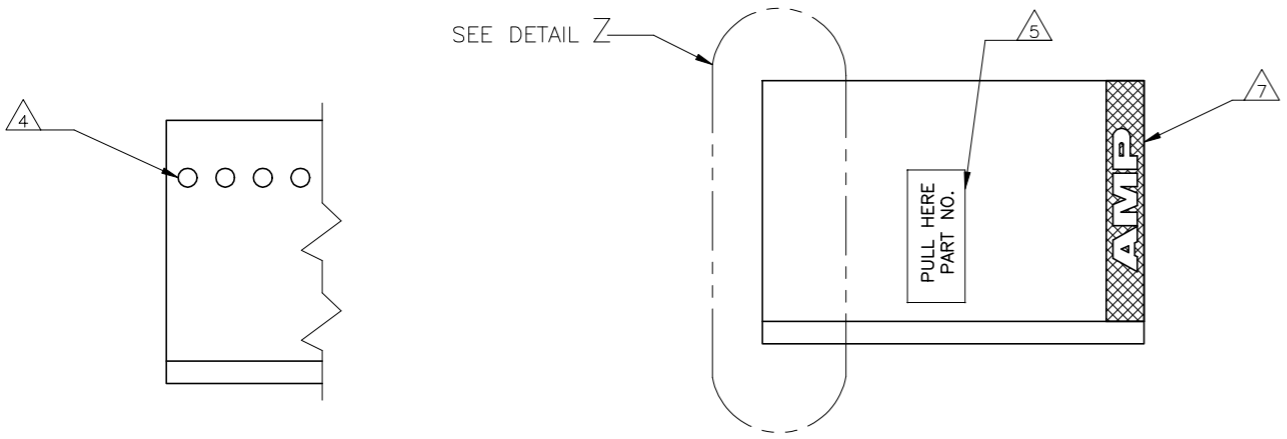
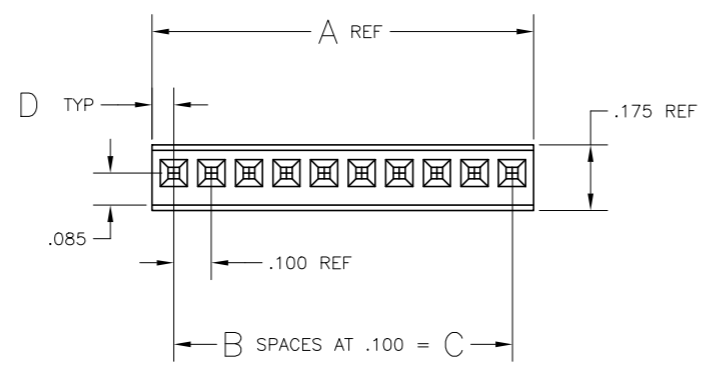
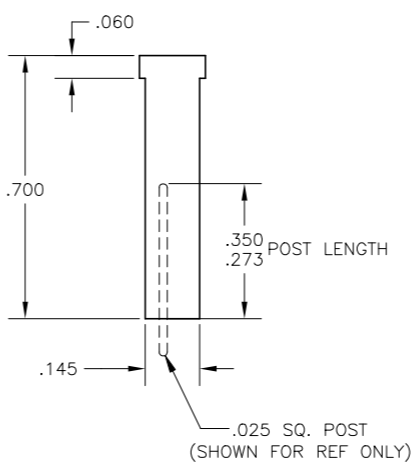
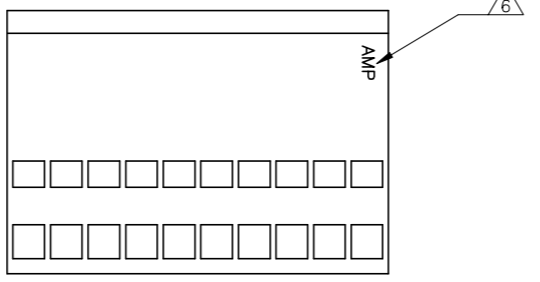
THIS DRAWING IS UNPUBLISHED. RELEASED FOR PUBLICATION
 © COPYRIGHT - TE Connectivity Ltd. ALL RIGHTS RESERVED.

REVISIONS					
#	LTR	DESCRIPTION	DATE	DNW	APVD
V		REVISED PER ECO-18-000976	28MAY2018	RS	JO
V1		REVISED PER ECO-19-016615	05NOV2019	RS	JO

PRODUCT INSTRUCTION

PULL ON HOUSING TO REMOVE FROM POSTS.
 DO NOT CONFINE THE CONDUCTORS OR PULL ON THE
 CONDUCTORS DURING REMOVAL ACTION.

- HOUSING ACCEPTS LOCKING CLIP CONTACT PART NO.S 87124, 87165, 87190, 87191, & MATES WITH .025 SQ. POSTS.
- HOUSING: GLASS FILLED NYLON.
- HOUSING: GLASS FILLED POLYESTER.
- CORE PIN SUPPORT HOLES ARE OPTIONAL, AND MAY BE ROUND OR SQUARE OR MAY NOT BE PRESENT AT ALL.
- MARKED AS SHOWN, THIS SIDE ONLY, APPROXIMATELY IN CENTER OF HOUSING. 'PULL HERE' AND PART NO. TO APPEAR ON HOUSING 6 POS AND LARGER.
- RAISED AMP LOGO MOLDED IN HOUSING.
- TEXTURED AMP LOGO MOLDED IN HOUSING. LOGO MAY APPEAR ON EITHER END OF HOUSING.



DETAIL Z

NOTES	MAT'L	COLOR	D	C	B	A	POS	PART NUMBER (UNMARKED)	PART NUMBER (STAMPED)	
SUPERSEDED BY 87175-2	△	△	BROWN	.058	.300	3	.416	4	6-87175-3	-
SUPERSEDED BY 87175-2	△	△	YELLOW	.054	0	0	.108	1	3-87175-4	-
SUPERSEDED BY 87175-2	△	△	ORANGE	.054	0	0	.108	1	3-87175-3	-
SUPERSEDED BY 87175-2	△	△	RED	.054	0	0	.108	1	3-87175-2	-
	△	△	BROWN	.054	0	0	.108	1	-	-
	△	△	BLACK	.058	1.300	13	1.416	14	3-87175-0	△2-87175-9
	△	△	BLACK	.058	1.200	12	1.316	13	2-87175-8	△2-87175-7
	△	△	BLACK	.058	1.100	11	1.216	12	2-87175-6	△2-87175-5
	△	△	BLACK	.058	1.000	10	1.016	11	2-87175-4	△2-87175-3
	△	△	BLACK	.058	.900	9	1.016	10	2-87175-2	△2-87175-1
	△	△	BLACK	.058	.800	8	.916	9	2-87175-0	△1-87175-9
	△	△	BLACK	.058	.700	7	.816	8	1-87175-8	△1-87175-7
	△	△	BLACK	.058	.600	6	.716	7	1-87175-6	△1-87175-5
	△	△	BLACK	.058	.500	5	.616	6	1-87175-4	△1-87175-3
	△	△	BLACK	.058	.400	4	.516	5	1-87175-2	-
	△	△	BLACK	.058	.300	3	.416	4	1-87175-0	-
	△	△	BLACK	.058	.200	2	.316	3	87175-8	-
	△	△	BLACK	.058	.100	1	.216	2	87175-6	-
	△	△	BLACK	.058	1.400	14	1.516	15	87175-4	87175-3
	△	△	BLACK	.054	0	0	.108	1	87175-2	-

THIS DRAWING IS A CONTROLLED DOCUMENT. DWN D KEITZER 11-16-89
 CHK S. BEAM 11-29-89
 S. BEAM 11-29-89

TE Connectivity

HOUSING-LOCKING CLIP .025 SQ. POST, .100 CENTERS (CLOSE END) SINGLE ROW

PRODUCT SPEC 108-36028
 APPLICATION SPEC 114-25006

MATERIAL: SEE TABLE FINISH: - WEIGHT: -
 SIZE: A1 CAGE CODE: 00779 DRAWING NO: 87175 RESTRICTED TO: -
 CUSTOMER DRAWING SCALE: 4:1 SHEET: 1 OF 1 REV: V1

X-ON Electronics

Largest Supplier of Electrical and Electronic Components

Click to view similar products for [Headers & Wire Housings](#) category:

Click to view products by [TE Connectivity](#) manufacturer:

Other Similar products are found below :

[892-18-020-10-001101](#) [58102-G61-06LF](#) [582553-1](#) [0009485154](#) [009176003701906](#) [0050291907](#) [LY20-4P-DT1-P1E-BR](#) [02.125.8002.8](#)
[609-3404](#) [61062-3](#) [61082-181009](#) [622-3653LF](#) [63453-116](#) [636-1030](#) [636-1427](#) [636-3427](#) [636-4007](#) [641938-9](#) [641991-4](#) [644827-2](#) [65817-](#)
[010LF](#) [65817-015LF](#) [65863-015LF](#) [66207-023LF](#) [67095-007LF](#) [67601157](#) [68645-018](#) [68648-049](#) [70.362.1628.0](#) [70-4210](#) [70-4226B](#) [70-](#)
[4853B](#) [707-5020](#) [707-5028](#) [71.350.2428.0](#) [71918-208LF](#) [71961-016LF](#) [733-134](#) [733-162](#) [754199-000](#) [760-3052](#) [787-8014-00](#) [79531-3000](#)
[FCN-360C032-B](#) [FCN-367T-T012/H](#) [FCN-723D010/2](#) [80.063.4001.1](#) [800-90-001-10-001000](#) [800-90-010-10-002000](#) [801-43-002-10-013000](#)