

THIS DRAWING IS UNPUBLISHED.

RELEASED FOR PUBLICATION FEB , 2006.

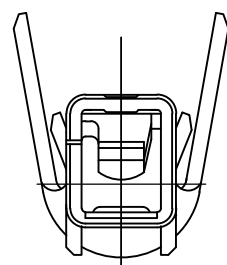
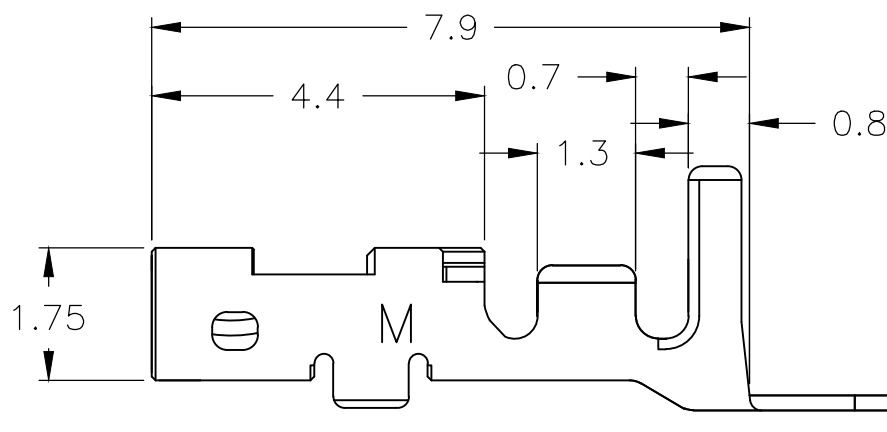
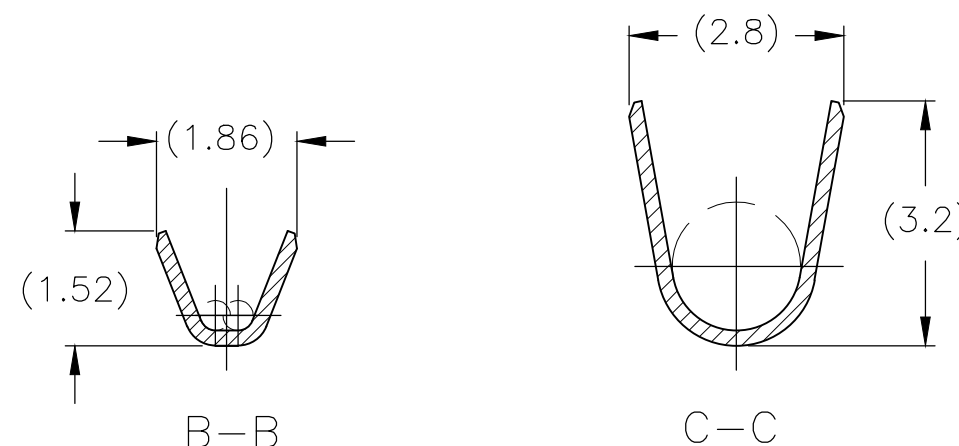
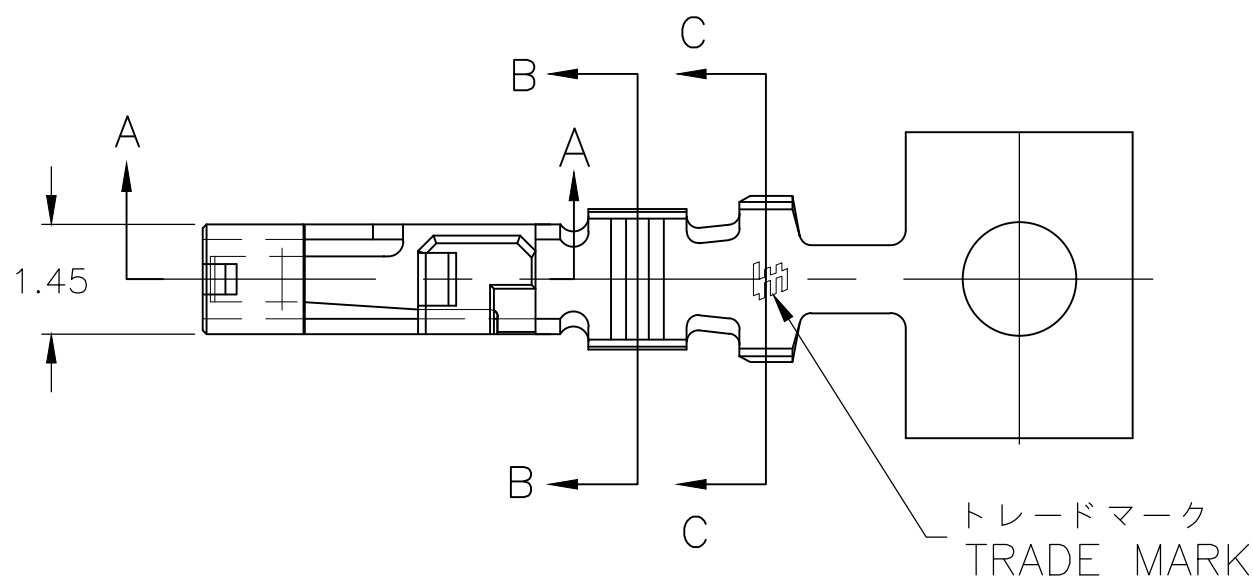
© COPYRIGHT 2006 TE Connectivity Ltd.

ALL RIGHTS RESERVED.

REVISIONS

変更

P	LTR	DESCRIPTION	DATE	DWN	APVD
	E	REVISED PER ECR-19-015859	18Nov2019	C.X	D.Z



1 適用プラグ・ハウジング型番  
X-1747066-X

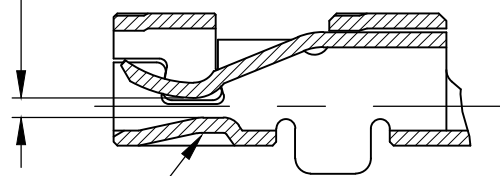
△ 高接点圧タイプ

1 APPLICABLE PLUG HOUSING P/N  
X-1747066-X

△ HIGH PRESSURE TYPE

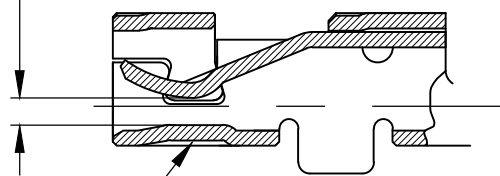
△ DIFFERENT DIMPLE TYPE

MATING PIN  
DIMENSION IS 0.50



A-A  
ONLY FOR 1871859-3

MATING PIN  
DIMENSION IS 0.50



A-A  
FOR 1871859-1&-2

AWG#28~#22 0.079~0.38mm <sup>2</sup>	φ1.08~φ1.9	PRE-TIN COPPER ALLOY	1871859-3 △
AWG#28~#22 0.079~0.38mm <sup>2</sup>	φ1.08~φ1.9	PRE-TIN COPPER ALLOY 錫めっき済銅合金	1871859-2 △
AWG#28~#22 0.079~0.38mm <sup>2</sup>	φ1.08~φ1.9	PRE-TIN COPPER ALLOY 錫めっき済銅合金	1871859-1
WIRE RANGE 導体断面積	INSULATION DIA 被覆外径	MATERIAL 材料	PART NO. 型番

THIS DRAWING IS A CONTROLLED DOCUMENT.

DWN J.SATO 21FEB2006

CHK N.YAMASAKI 21FEB2006

APVD N.YAMASAKI 21FEB2006

PRODUCT SPEC  
製品規格

108-78307

APPLICATION SPEC  
取付適用規格

114-5359

WEIGHT 0.000000

CUSTOMER DRAWING

NAME 名称  
GRACE INERTIA CONNECTOR 2.5  
REC CONTACT TIN PLATE TYPE M TYPE

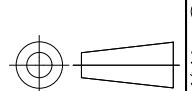
SIZE CAGE CODE DRAWING NO 番号  
A3 00779 C-1871859

RESTRICTED TO

SCALE 尺度 10:1 SHEET 1 OF 1 REV E

DIMENSIONS:  
単位: 概 mm

TOLERANCES UNLESS  
OTHERWISE SPECIFIED:  
一般公差



0 PLC	± 0.3
1 PLC	± 0.2
2 PLC	± 0.15
3 PLC	±
4 PLC	±
ANGLES	±

MATERIAL  
材料  
SEE TABLE

FINISH  
仕上

## X-ON Electronics

Largest Supplier of Electrical and Electronic Components

*Click to view similar products for [Power to the Board](#) category:*

*Click to view products by [TE Connectivity](#) manufacturer:*

Other Similar products are found below :

[6450171-4](#) [6450552-7](#) [6600323-8](#) [6643429-1](#) [6646040-2](#) [6651939-1](#) [6766604-1](#) [120959-1](#) [1393557-2](#) [1393532-2](#) [1393532-3](#) [1393532-4](#)  
[1393557-1](#) [1600812-5](#) [1-6450861-2](#) [1744132-7](#) [1761122-1](#) [1766250-1](#) [1892109-1](#) [2-6450860-5](#) [2-6450870-0](#) [1-6450161-4](#) [1-6450850-6](#) [1-6450869-6](#) [1645526-2](#) [1-6600130-0](#) [2005243-2](#) [377-0020-11130](#) [TE34-12-16P-F0](#) [5-6450830-6](#) [5646956-4](#) [377-0080-11131A](#) [4-6450830-9](#)  
[4-6600333-3](#) [10125416-4050LF](#) [6600320-3](#) [3-6450860-5](#) [1888123-2](#) [6450166-1](#) [6643978-1](#) [6766605-1](#) [701-15-02109](#) [N11444](#) [6651938-1](#)  
[6450810-7](#) [46437-1112](#) [1-1589677-8](#) [5646956-5](#) [6450813-2](#) [6450129-4](#)