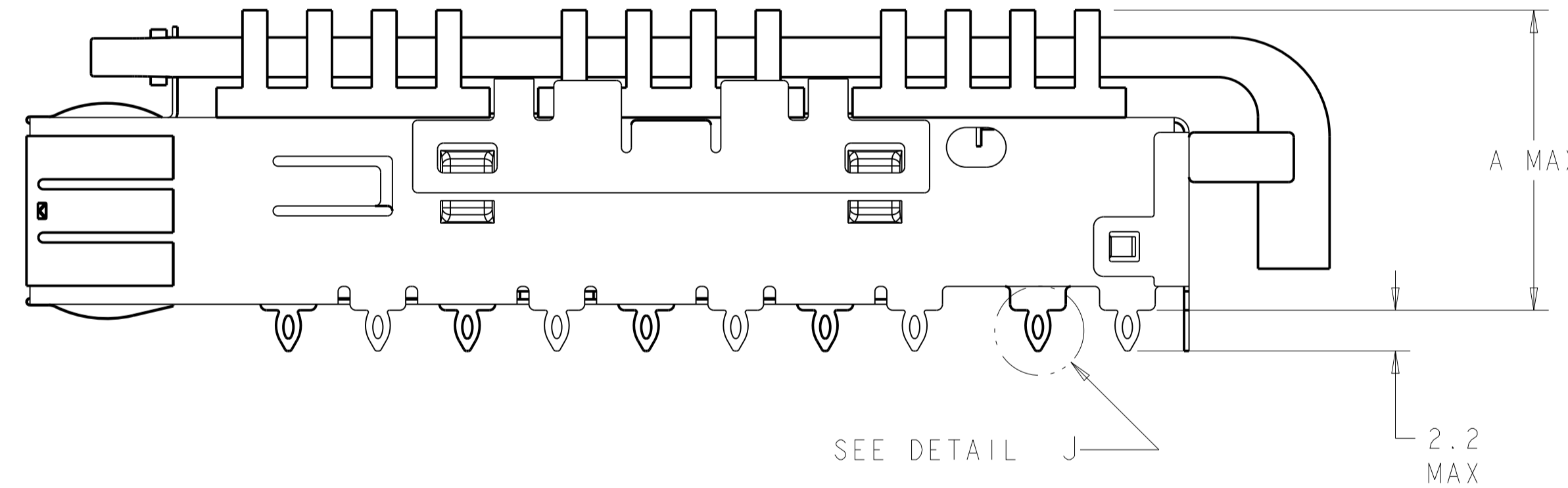
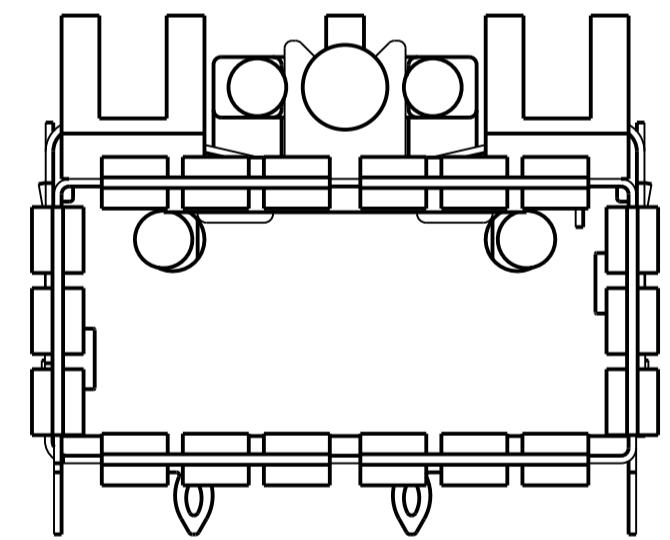
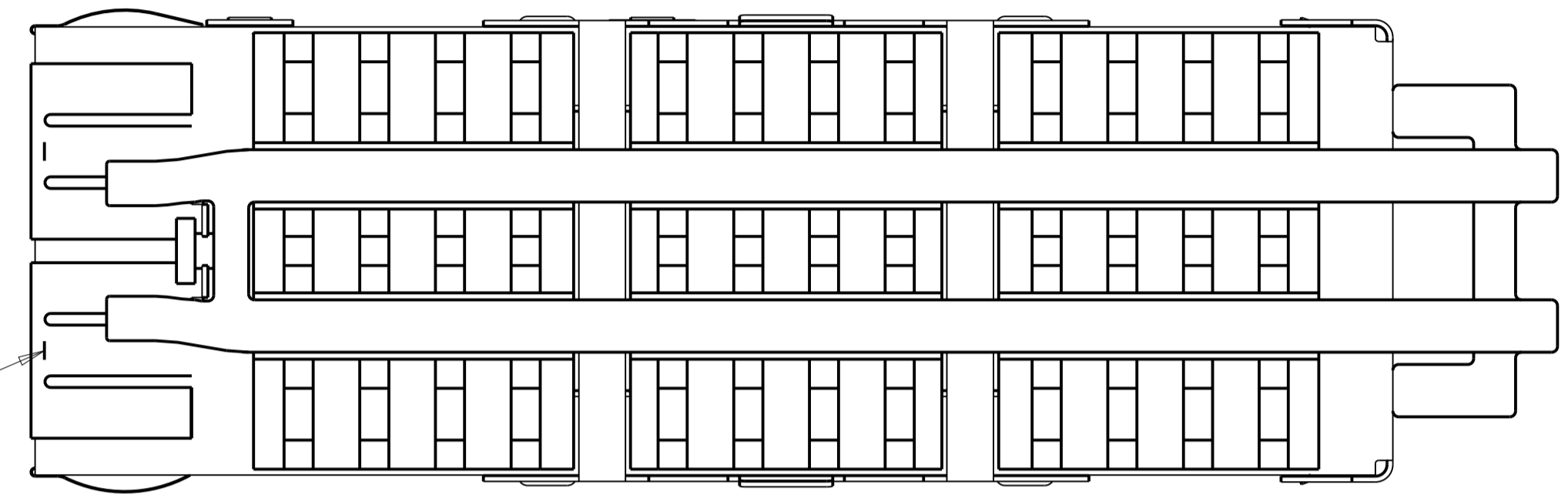


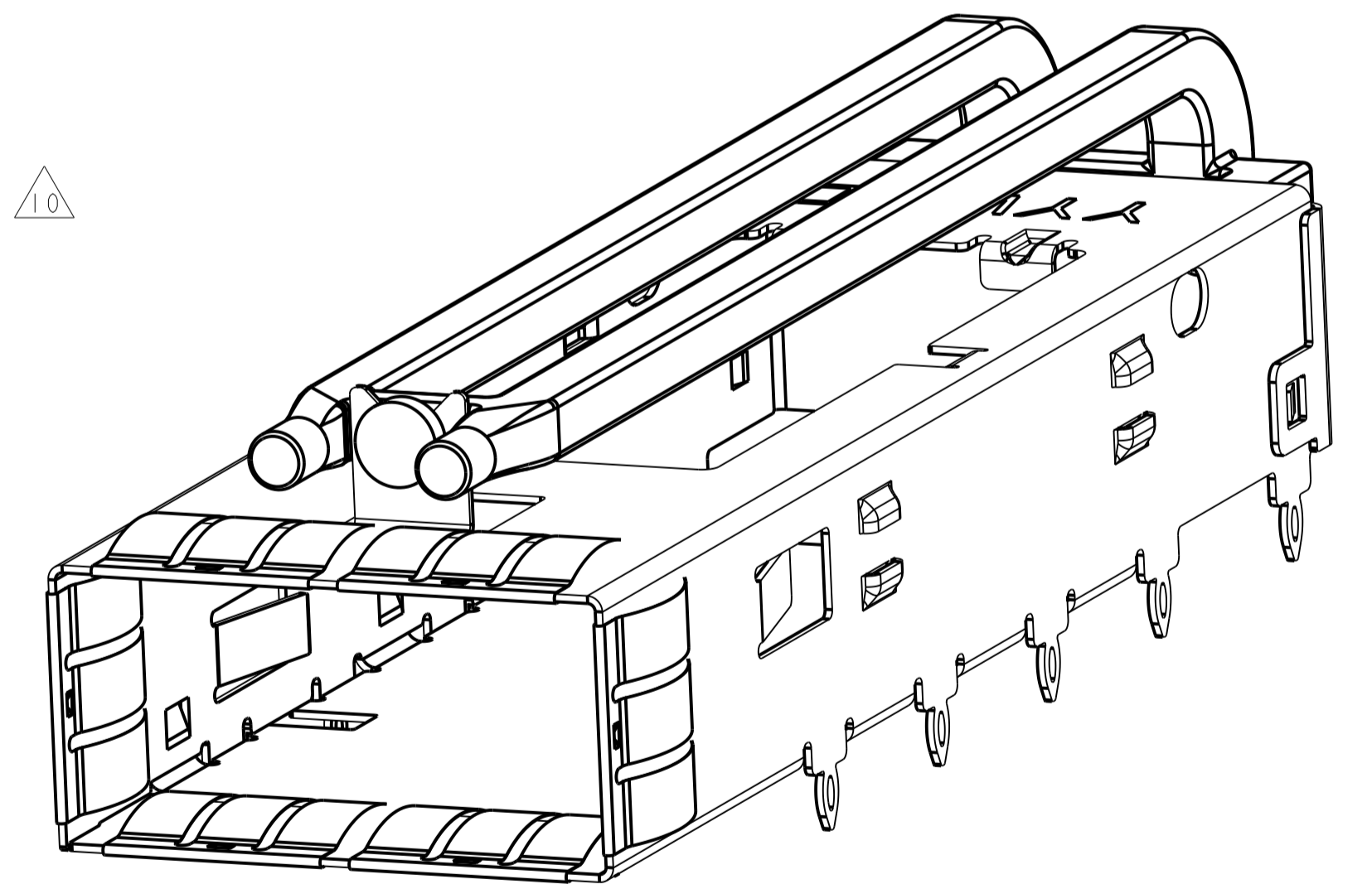
LOC	DIST	REVISIONS			
GP	00	REV	DATE	BY	CHK
		A1	08APR2011	AL	CW
		A2	18AUG2014	RG	MC

- △ MATERIAL:
 CAGE: NICKEL SILVER, 0.25 THICK
 HEAT SINK: ALUMINUM
 HEAT SINK CLIP: STAINLESS STEEL
 EMI SPRINGS: COPPER ALLOY
 LIGHT PIPE: CLEAR POLYCARBONATE.
- △ MINIMUM PITCH DIMENSION.
3. MATES WITH SFF-8436 COMPATIBLE TRANSCEIVER.
- △ REFERENCE APPLICATION SPEC 114-13217 FOR RECOMMENDED DRILL HOLE DIAMETER AND PLATING THICKNESS.
- △ DATUMS AND BASIC DIMENSIONS ESTABLISHED BY CUSTOMER.
6. MINIMUM PC BOARD THICKNESS:
 SINGLE SIDED = 1.45mm (shown, pg. 4)
 DOUBLE SIDED = 2.2mm.
- △ HEATSINK, LIGHT PIPE, AND CLIP SHIPPED ASSEMBLED TO CAGE ASSEMBLY. CAGE ASSEMBLY MAY BE PRESSED INTO THE PCB AS SHIPPED.
- △ DATUM -A- IS TOP SURFACE OF HOST BOARD.
- △ SURFACE TRACES PERMITTED WITHIN THIS LENGTH EXCEPT WHERE CAGE STANDOFFS, SHOWN IN DETAIL J, CONTACT PC BOARD.
- △ DIMENSION APPLIES WITH MODULE INSTALLED IN CAGE.
11. MAXIMUM HEIGHT OF CUSTOMER SUPPLIED LED OFF BOARD: 1.70mm.
- △ DATE CODE (YYWW) MARKED ON TOP OF CAGE AND CONCEALED BY HEAT SINK APPLIES TO CAGE ASSEMBLY ONLY.
- △ HEAT SINK AND CLIP SHIPPED ASSEMBLED TO CAGE ASSEMBLY. CAGE ASSEMBLY MAY BE PRESSED INTO THE PCB AS SHIPPED. LIGHT PIPE MUST BE ASSEMBLED BY CUSTOMER AFTER THE CAGE IS SEATED ON THE PCB.
- △ SPRING FINISH: 0.8um MIN TIN OVER 0.8um MIN NICKEL.
 HEAT SINK FINISH: NICKEL.
 NON-PLATED EDGES PERMISSIBLE.
15. PRODUCT HAS NOT COMPLETED QUALIFICATION TESTING.

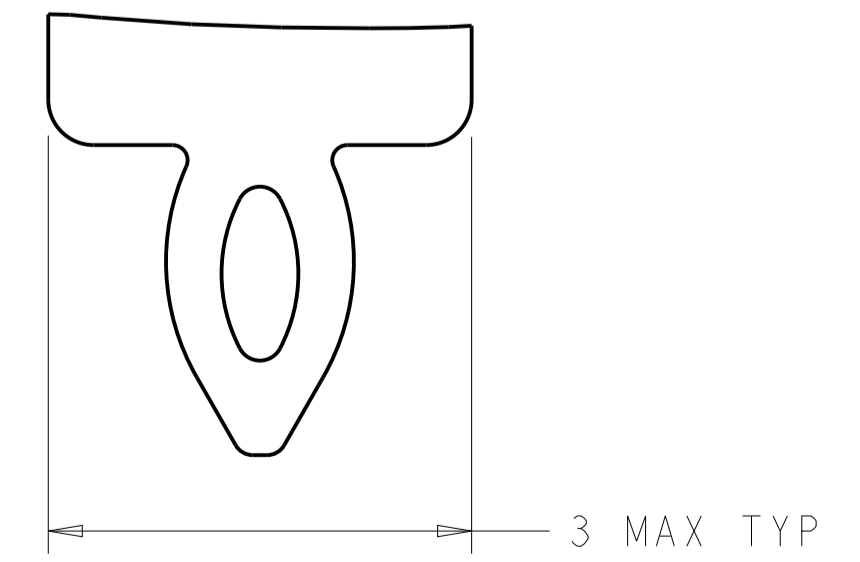
Sn42Bi58 SOLDER
 6 PLACES



SEE DETAIL J



1888971-4 AS SHOWN
 SCALE 5:1

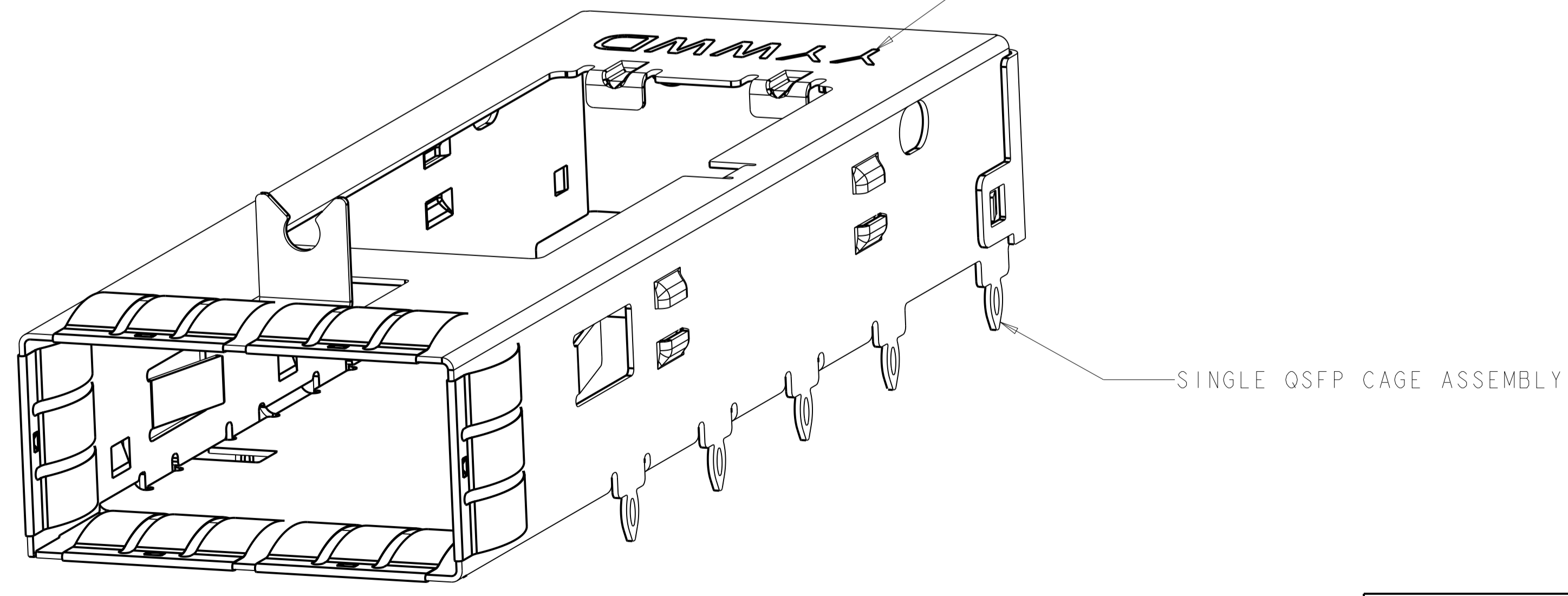
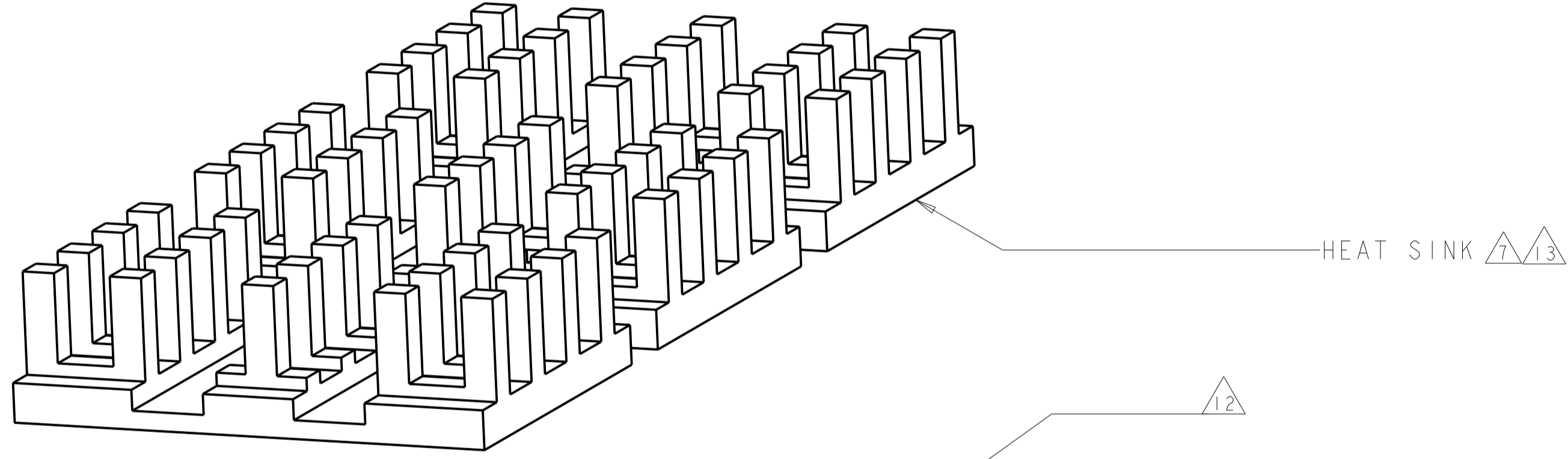
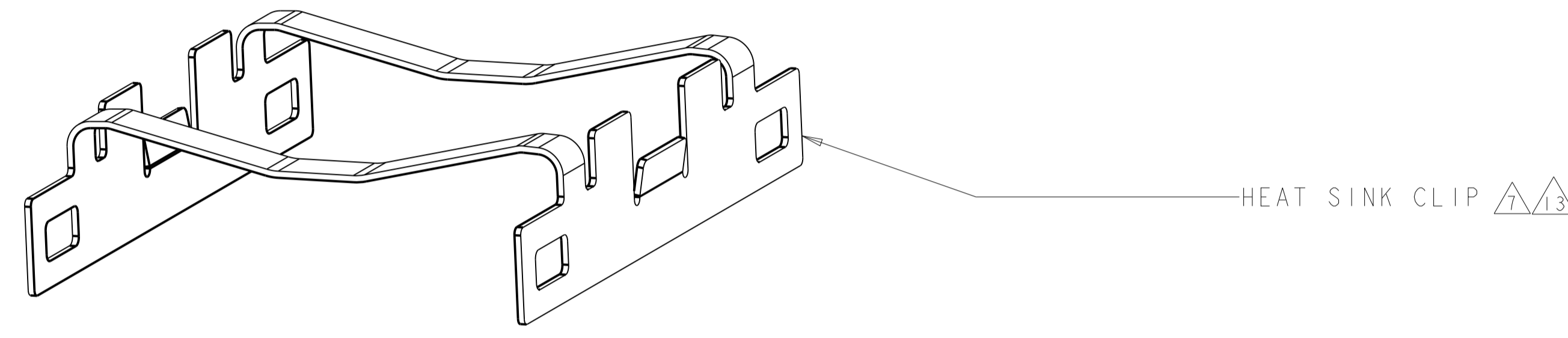
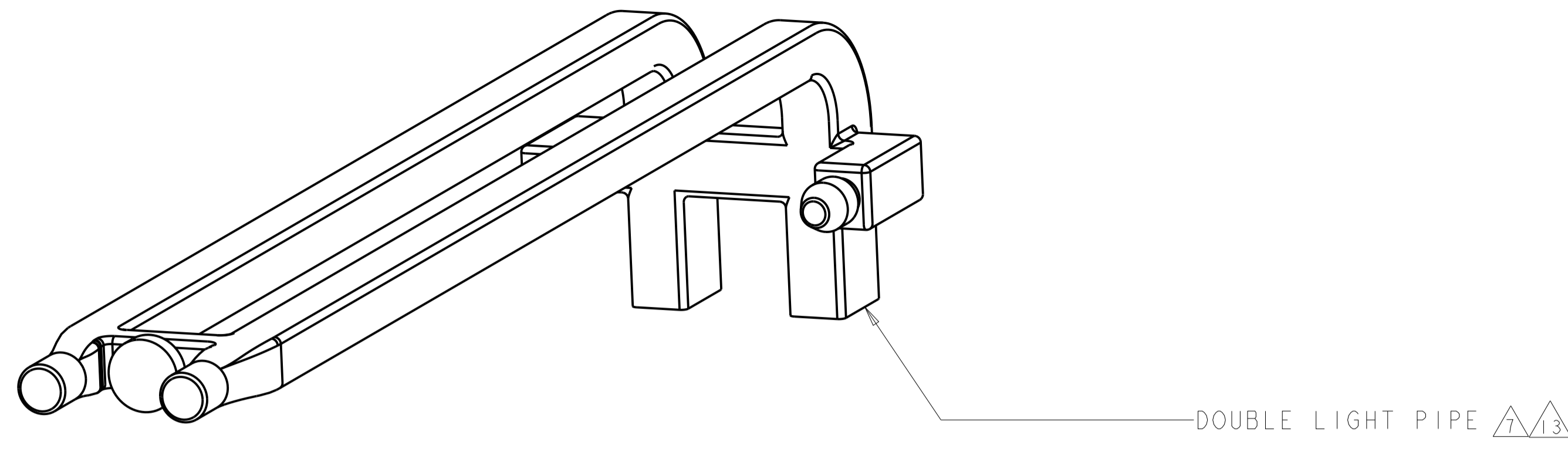


DETAIL J
 SCALE 20:1

DESCRIPTION	PART NUMBER
- NO HEAT SINK	1888971-4
13.7 PCI HEAT SINK	1888971-3
23.0 NETWORKING HEAT SINK	1888971-2
16.0 SAN HEAT SINK (SHOWN)	1888971-1

THIS DRAWING IS A CONTROLLED DOCUMENT.		OWN: C. VALENTINE 22FEB2007	TE Connectivity	
DIMENSIONS: mm		CHK: E. BRIGHT 22FEB2007		
TOLERANCES UNLESS OTHERWISE SPECIFIED:		APVD: E. BRIGHT 22FEB2007	NAME: CAGE ASSEMBLY, THRU BEZEL, QSFP, W/ HEAT SINK AND DOUBLE LIGHT PIPE	
0 PLC	±0.13	PRODUCT SPEC	108-2286	
1 PLC	±0.13	APPLICATION SPEC	114-13217	
2 PLC	±0.13	SIZE	CAGE CODE DRAWING NO	
3 PLC	±0.013	WEIGHT	A100779C=1888971	
4 PLC	±0.013	Customer Drawing	SCALE 4:1 SHEET 1 OF 4 REV A2	
ANGLES	±0.0001			
FINISH	△14			

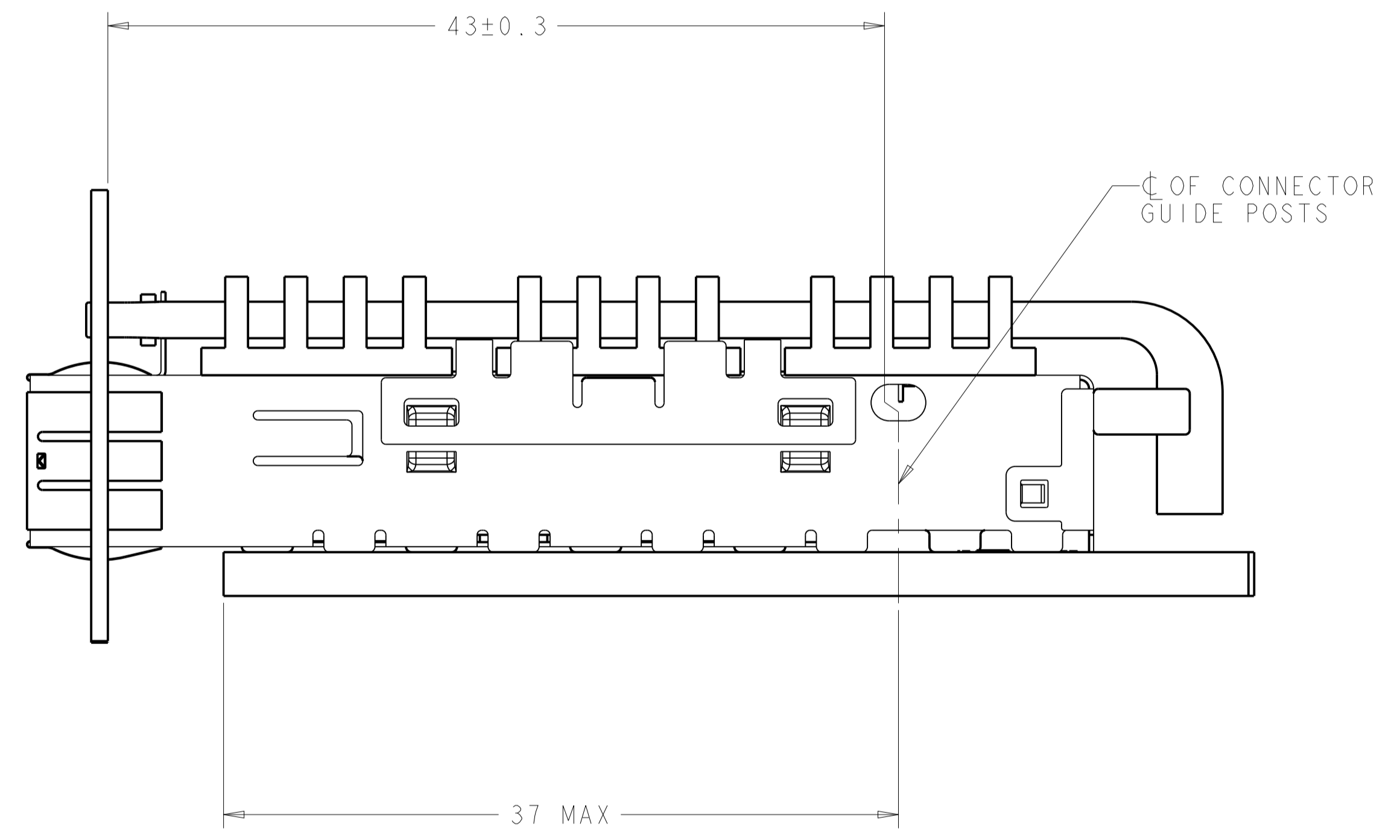
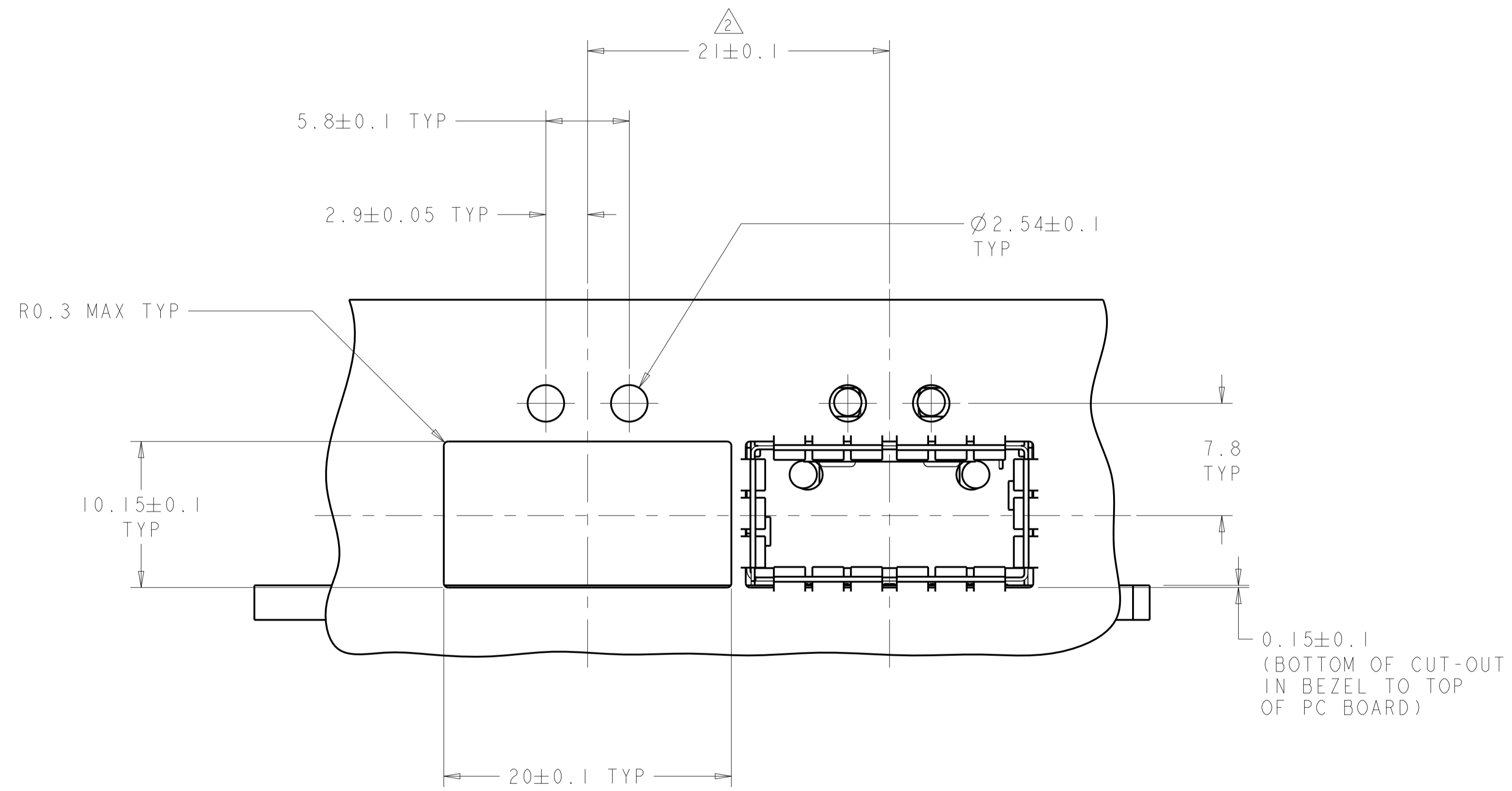
LOC		DIST		REVISONS			
GP	00	P	LYR	DESCRIPTION	DATE	DMN	APVD
		-		SEE SHEET 1	-	-	-



ISOMETRIC EXPLODED VIEW
 SCALE 6:1

THIS DRAWING IS A CONTROLLED DOCUMENT.		DMN C. VALENTINE 22FEB2007	STE TE Connectivity
DIMENSIONS: mm		CHK E. BRIGHT 22FEB2007	
TOLERANCES UNLESS OTHERWISE SPECIFIED:		APVD E. BRIGHT 22FEB2007	NAME CAGE ASSEMBLY, THRU BEZEL, QSFP, W/ HEAT SINK AND DOUBLE LIGHT PIPE
0 PLC ± 0.13		PRODUCT SPEC	108-2286
1 PLC ± 0.13		APPLICATION SPEC	114-13217
2 PLC ± 0.13		WEIGHT	A100779C=1888971
3 PLC ± 0.013		RESTRICTED TO	
4 PLC ± 0.013		SCALE	4:1
ANGLES ± 0.0001		SHEET	2 OF 4
FINISH		REV	A2
MATERIAL		Customer Drawing	

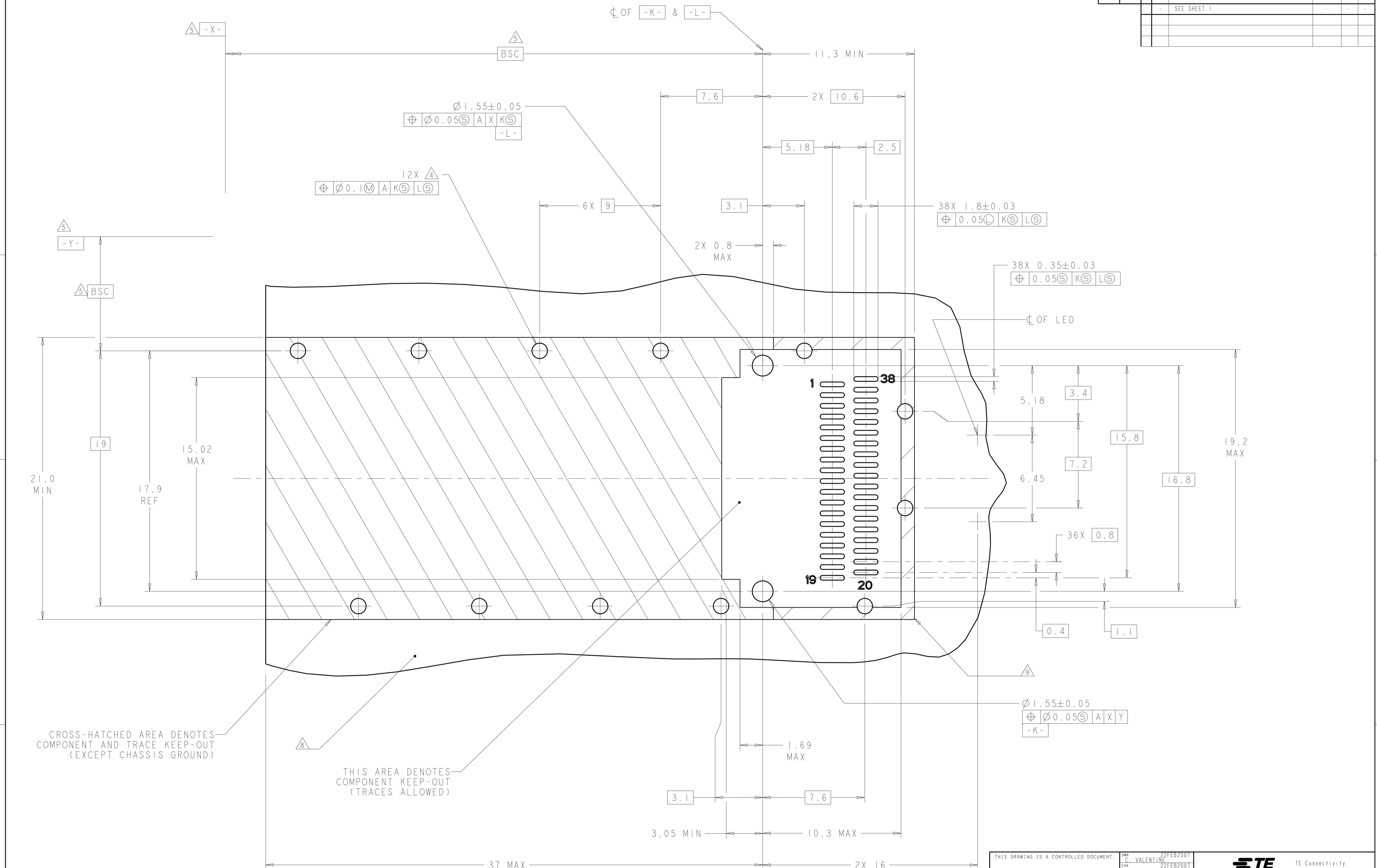
LOC		DIST		REVISIONS			
P	LTN	DESCRIPTION	DATE	DMN	APVD		
-	-	SEE SHEET 1	-	-	-	-	-



THIS DRAWING IS A CONTROLLED DOCUMENT.		DMN C. VALENTINE 22FEB2007	STE TE Connectivity	
		CHK E. BRIGHT 22FEB2007		
DIMENSIONS:		APVD E. BRIGHT 22FEB2007	NAME CAGE ASSEMBLY, THRU BEZEL, QSFP, W/ HEAT SINK AND DOUBLE LIGHT PIPE	
mm	TOLERANCES UNLESS OTHERWISE SPECIFIED:	PRODUCT SPEC 108-2286	SIZE A100779C=1888971	
	0 PLC ± 0.13	APPLICATION SPEC 114-13217	RESTRICTED TO	
	1 PLC ± 0.13	WEIGHT	A100779C=1888971	
	2 PLC ± 0.13	Customer Drawing	SCALE 4:1 SHEET 3 OF 4 REV A2	
	3 PLC ± 0.013			
	4 PLC ± 0.0001			
	ANGLES ± 0.0001			
MATERIAL	FINISH			

LOC	DIST	REV	DATE	BY	APPV
GP	00				

REVISIONS			
REV	DATE	BY	APPV
-	-	-	-
-	-	-	-



CROSS-HATCHED AREA DENOTES COMPONENT AND TRACE KEEP-OUT (EXCEPT CHASSIS GROUND)

THIS AREA DENOTES COMPONENT KEEP-OUT (TRACES ALLOWED)

RECOMMENDED PC BOARD LAYOUT
 SCALE 8:1

THIS DRAWING IS A CONTROLLED DOCUMENT.		OWN: C. VALENTINE 22FEB2007	TE Connectivity
DIMENSIONS: mm		CHK: E. BRIGHT 22FEB2007	
TOLERANCES UNLESS OTHERWISE SPECIFIED:		APPV: E. BRIGHT 22FEB2007	NAME: CAGE ASSEMBLY, THRU BEZEL, QSFP, W/ HEAT SINK AND DOUBLE LIGHT PIPE
0 PLC ±0.13	1 PLC ±0.13	PRODUCT SPEC: 108-2286	SIZE: A100779
2 PLC ±0.13	3 PLC ±0.13	APPLICATION SPEC: 114-13217	CAGE CODE: 1888971
4 PLC ±0.013	5 PLC ±0.013	WEIGHT: -	RESTRICTED TO: -
ANGLES ±0.0001	FINISH: -	MATERIAL: -	SCALE: 4:1
Customer Drawing		SHEET: 4 OF 4	REV: A2

X-ON Electronics

Largest Supplier of Electrical and Electronic Components

Click to view similar products for [I/O Connectors](#) category:

Click to view products by [TE Connectivity](#) manufacturer:

Other Similar products are found below :

[571763P](#) [58098-0628](#) [72.250.1628.2](#) [72.250.2428.2](#) [74720-0505](#) [76.350.0729.0](#) [76871-1403](#) [FCN-244F080-G/1](#) [FCN-260A9920](#) [PCR-E36PM](#) [PCS-XE26MA+](#) [G38A71314B](#) [1571250010](#) [157-22500-3](#) [MS3471L14-19P L/C](#) [172501-4002](#) [172501-6002](#) [FCN-260C008-A/L0](#) [FCN-260C024-AL0](#) [FCN-261Z008](#) [2000314-1](#) [200331-1](#) [PCR-E36FC+](#) [PCS-E28FS+](#) [PCS-XE26SLFD+](#) [PCS-XE26SLFDT+](#) [G730VID08BDC24](#) [U90B2054081210](#) [38113800006](#) [DP3AR020WQ1R200](#) [Z4.102.0680.0](#) [500-1040](#) [500-1052](#) [500-1054](#) [ZP-4008-66L](#) [0709821002](#) [DX40-20P\(55\)](#) [5554841-1](#) [MS3474W18-8P-LC*](#) [U90B3054061110](#) [U65-E04-4020](#) [ZPF000000000097891](#) [747360449](#) [10099439-003C-TRLF](#) [10137239-0021LF](#) [E9320-001-01](#) [10137239-0011LF](#) [70289-001LF](#) [70.060.1028.0](#) [109029-ZZ](#)