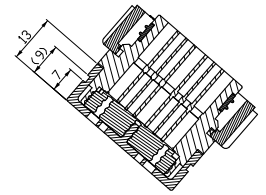
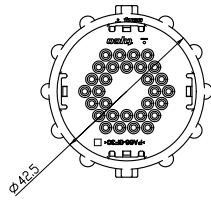
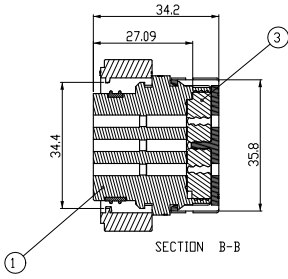
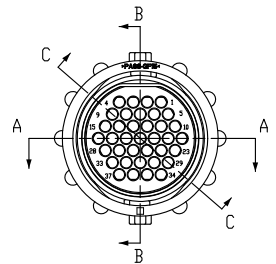
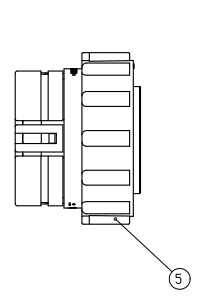
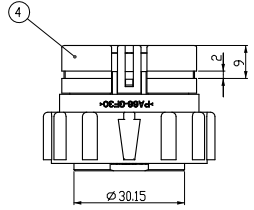
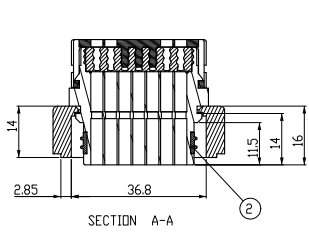
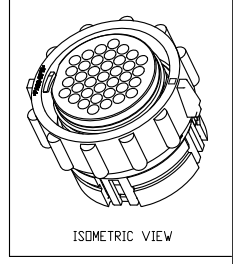


LOC	DIST	REVISIONS					
DS	-	P	LYR	DESCRIPTION	DATE	DWN	APVD
		A		RELEASED	09.JUL'07	DG	JK
		B		REVISED (ECR-09-008790)	16.JUL'09	KT	HG



- NOTE
- 본 부품은 ES91500-00을 만족할 것.
 - <상대 CONNECTOR P/N: 91206-82000 (TE P/N: 1897260)와 ASS'Y 상태에서 만족할 것>
 - 각 단자 삽입력은 TE Production Spec. 108-10042(4.2磅)를 따를 것.
 - 다음 사용환경을 만족할 것.
 - 내열성: -40 ~ 150 °C
 - 내유성: 상기온도 인진오일에서 내유성 확보할 것.
 - 내진성: 30G
 - 가능성 유해한 흄, 균열, 결함 등이 없을 것.
 - APPLIED TERMINAL P/N: SEE TABLE 1
 - MATING TAB P/N: SEE TABLE 2
 - 지시하지 않은 ROUND는 지면 R로 할 것.
 - DRAFT ANGLE MAX. 0.5°
 - FLASH=MAX 0.2, WARPAGE=MAX 0.2
 - 표시하지 않은 일반 공차는 ES02514-00의 2급을 따를 것.
 - 단자 삽입시 SEAL PROTECTOR(P/N:208338-1)를 반드시 사용할 것.

< TABLE 1 >

TYPE	PART NO.	WIRE SIZE(mm ² /AWG)	INSULATION DIA.(mm)	CONDUCTOR STRANDING (NUMBER X AWG)
III+	66100-8	0.85 / 18	1.778	19 X 30

< TABLE 2 >

TYPE	PART NO.	WIRE SIZE(mm ² /AWG)	INSULATION DIA.(mm)	CONDUCTOR STRANDING (NUMBER X AWG)
III+	66098-8	0.85 / 18	1.778	19 X 30

QTY	FINISH/COLOR	MATERIAL	DESCRIPTION	PART NO.	Q'TY	1897263-1	ASSY P/N
5	BLACK	PA66-GF15	COUPLING RING	1897265-2	1		
4	BLACK	PA66-GF30	COVER HOUSING	1897262-2	1		
3	RED	SILICON RUBBER	FAMILY SEAL	1897905-6	1		
2	RED	SILICON RUBBER	INNER SEAL	1897906-6	1		
1	BLACK	PA66-GF30	PLUG HOUSING	1897264-2	1		

DIMENSIONS: (mm) 		TO DIMENSIONS UNLESS OTHERWISE SPECIFIED 0 PLC ± 1 PLC ± 2 PLC ± 3 PLC ± 4 DEC. ANGLES ±		DWN: KT JANG CHK: JW JANG APVD: HJ DOO PRODUCT SPEC: _____ APPLICATION SPEC: _____		Tyco Electronics AMP KOREA Kyungson, Korea	
MATERIAL: SEE TABLE FINISH: -		WEIGHT: _____ CUSTOMER DRAWING: _____		NAME: _____ SIZE: A2 CAGE CODE: 00779 DRAWING NO: C=1897263 RESTRICTED TO: _____		SHEET 1 OF 1 REV B	

X-ON Electronics

Largest Supplier of Electrical and Electronic Components

Click to view similar products for [Standard Circular Connector](#) category:

Click to view products by [TE Connectivity](#) manufacturer:

Other Similar products are found below :

[5M2530B10P](#) [600259N006](#) [600273N007](#) [6134-336-13149](#) [6134-337-11149](#) [6134-337-2390](#) [6134-341-17149](#) [6280-4SG-516](#) [6280-7SG-3DC](#)
[6290](#) [6291A](#) [66200A-10](#) [680-SMG](#) [681-PMG](#) [CXS3102A14S2P](#) [CXS3102A181S](#) [7251-5SG-300](#) [7271-6SG-300](#) [7282-3PG-300-CH3](#) [75-](#)
[474618-01S](#) [75-474618-04P](#) [75-474618-04S](#) [799539-000](#) [MI8-SE](#) [805-005-07NF11-19PC](#) [805-005-07NF15-7PA](#) [8280-4PG-516](#) [8280-7PG-](#)
[519](#) [8282-5PG-519](#) [836783-1](#) [MP-4102-25P-C](#) [862256-1](#) [864019-2](#) [866857-1](#) [867865-1](#) [PT01SP-14-18P](#) [PT08P-14-5S](#) [PTSF06SE-14-12S](#)
[120-1833-000](#) [QCM019PC2DC012B](#) [1-2069279-1](#) [121583-0217](#) [121667-0020](#) [129591AU](#) [1000B BULK](#) [RD10A16-19-P6CS051/1](#)
[RD10A20-31-P8CS051/1](#) [RD16A14-12-S6CS051/2](#) [1301240290](#) [1301240347](#) [1301860202](#)