

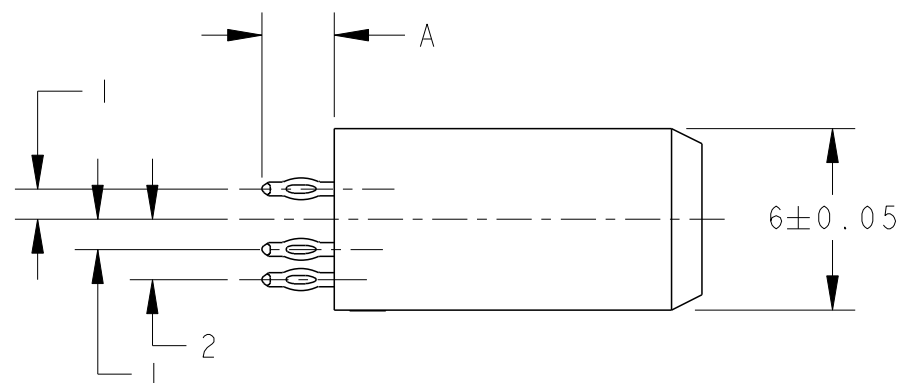
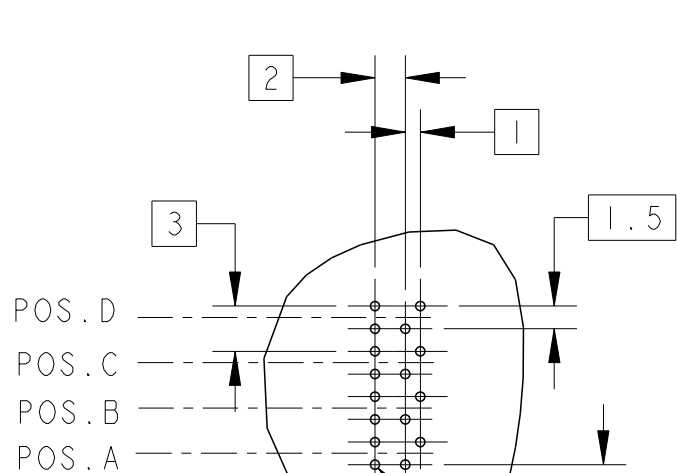
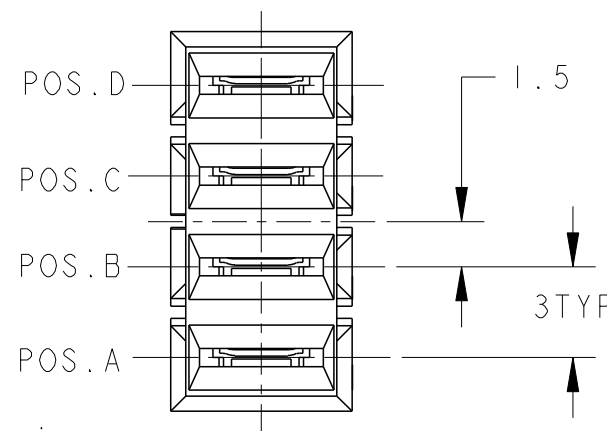
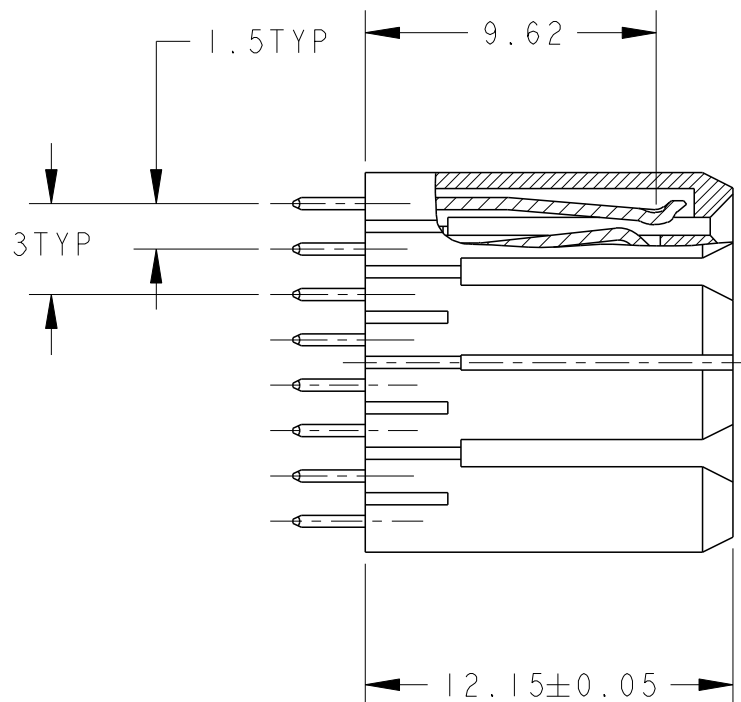
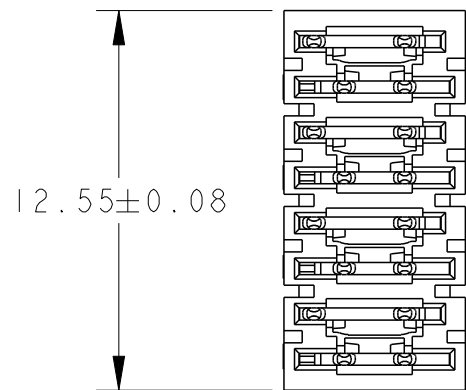
THIS DRAWING IS UNPUBLISHED.

RELEASED FOR PUBLICATION

20

© COPYRIGHT 20 BY Tyco Electronics Japan G.K. ALL RIGHTS RESERVED.

LOC	DIST	REVISIONS					
		P	LTR	DESCRIPTION	DATE	DWN	APVD
J	-		A	RELEASED	21NOV2006	T.K	K.I
			B	REVISED	22AUG2012	Y.U	E.T
			C	REV PER ECO-15-003631	09MAR2015	ML	SZ



- 1 MATERIAL  
CONTACT: COPPER ALLOY  
HOUSING: THERMOPLASTIC
- 2 FINISH  
CONTACT MATING AREA: 0.76um MIN. GOLD PLATE  
EON AREA: 0.5um MIN. TIN PLATE  
ALL OVER 1.27um MIN. NICKEL PLATE
- 3 TYPICAL HOLE DETAIL;  
DRILLED HOLE =  $\varnothing 0.7 \pm 0.02$   
COPPER THICKNESS = 0.035 TO 0.065
- 4 FINISH  
CONTACT MATING AREA: 0.76um MIN. GOLD PLATE  
EON AREA: 0.5um MIN. BRIGHT TIN-LEAD PLATE  
ALL OVER 1.27um MIN. NICKEL PLATE
- 5 CONTACT AREA LUBRICATED WITH BELLCORE APPROVED LUBRICANT. TECHNICAL REFERENCE: GR-1217-CORE, ISSUE 1, NOVEMBER 1995.

TOP SURFACE OF DAUGHTER CARD

0.75 REF  
 $\varnothing 0.6 \pm 0.05$  3  
 $\varnothing 0.08$  M  
 PLATED THROUGH HOLE  
 16PLC.

REFERENCE PCB HOLE LAYOUT

1903978-1: AS SHOWN

THIS DRAWING IS A CONTROLLED DOCUMENT.		DWN T. KATANO 21NOV06	TE Connectivity		
DIMENSIONS: mm		CHK K. IKEGAMI 21NOV06			
TOLERANCES UNLESS OTHERWISE SPECIFIED: $\pm 0.3$		APVD K. IKEGAMI 21NOV06	NAME SLIM UNIVERSAL POWER MODULE 4POS. RECEPTACLE ASSEMBLY		
0-PLC $\pm$ 1-PLC $\pm 0.1$ 2-PLC $\pm 0.01$ 3-PLC $\pm 0.001$ 4-PLC $\pm 0.0001$ ANGLES $\pm$		PRODUCT SPEC 108-78387	SIZE A3	CAGE CODE -	DRAWING NO C=1903978
MATERIAL 1		FINISH SEE TABLE	APPLICATION SPEC -	RESTRICTED TO -	
CUSTOMER DRAWING			SCALE 4:1	SHEET 1	OF 1
			REV C		



SLIM UNIVERSAL POWER MODULE 4POS. RECEPTACLE ASSEMBLY

SIZE A3, CAGE CODE -, DRAWING NO C=1903978, RESTRICTED TO -

CUSTOMER DRAWING, SCALE 4:1, SHEET 1 OF 1, REV C

## X-ON Electronics

Largest Supplier of Electrical and Electronic Components

*Click to view similar products for [Hard Metric Connectors](#) category:*

*Click to view products by [TE Connectivity](#) manufacturer:*

Other Similar products are found below :

[6345127-1](#) [646916-9](#) [6469658-1](#) [973108](#) [1-2000713-0](#) [1-2000713-2](#) [1-2000713-3](#) [1645343-1](#) [1645456-1](#) [1645594-1](#) [1645595-1](#) [1645601-1](#)  
[1934822-1](#) [278071110010833](#) [1645179-1](#) [1645245-1](#) [1645457-1](#) [1645525-1](#) [1645570-1](#) [1645596-1](#) [17041102202](#) [1857470-1](#) [1934275-1](#)  
[1934289-1](#) [1934759-1](#) [2000673-1](#) [2170292-2](#) [2-536642-6](#) [3-106015-1](#) [352188-1](#) [352629-1](#) [5120823-1](#) [5120899-1](#) [3-100145-0](#) [3-100147-0](#)  
[3-100669-1](#) [3-106081-0](#) [HM2DK2368PLF](#) [5646530-1](#) [3-352049-0](#) [3-352069-0](#) [3-352115-0](#) [3-352638-0](#) [352189-1](#) [3-646357-0](#) [3-646487-0](#)  
[3-646513-0](#) [104108](#) [106726-1](#) [114352](#)