

4

3

2

1

THIS DRAWING IS UNPUBLISHED.

RELEASED FOR PUBLICATION

© COPYRIGHT 2011 BY TYCO ELECTRONICS CORPORATION. ALL RIGHTS RESERVED.

LOC
DW

DIST

REVISIONS

P	LTR	DESCRIPTION	DATE	DWN	APVD
A5		ECR-17-013294	11SEP'17	T.Q	W.H

DIM A

FOR PIN1 MARK

4.30

3.50

Ø1.80

RECOMMENDED PICK-UP AREA

0.80±0.05
2 PLC

0.80MIN.
2 PLC

3.85±0.05

1.10±0.05
2 PLC

0.60MIN.

1.20±0.05

DIM B±0.05

0.85MIN.

CONNECTOR OUTLINE

0.80±0.05
2 PLC

0.70MIN.
2 PLC

3.85±0.05

0.80±0.05
2 PLC

0.60MIN.

1.20±0.05

DIM B±0.05

0.85MIN.

CONNECTOR OUTLINE

DIM C

DIM B±0.15

1.20±0.15

1.20

1.40

1.1

0.20±0.03

0.30

RECOMMENDED PCB LAYOUT
ONLY FOR 4~6 PINRECOMMENDED PCB LAYOUT
ONLY FOR 2 & 3 PIN

0.1 MAX.
SOLDER LEAD

NOTE:

1. MATERIAL:

1.1 HOUSING: LCP WITH 30% GF, UL 94V-0, BLACK COLOR.

1.2 CONTACTS: PHOSPHOR BRONZE 0.20±0.05mm THICKNESS.

1.3 PEGS: BRASS 0.30±0.05mm THICKNESS.

2. FINISH:

2.1 CONTACTS: GOLD FLASH PLATED ON CONTACT AREA, WITH ENTIRE CONTACT GOLD FLASH PLATED OVER 1.27µm [50u"] MIN. NICKEL UNDERPLATED OVERALL.

2.2 PEGS: 2.54µm [100u"] MIN. MATTE-TIN OVER 1.27µm [50u"] MIN. NICKEL UNDERPLATED OVERALL.

3. REFLOW SOLDER CAPABLE TO 260°C PER TYCO TEST SPEC. 109-201, CONDITION B.

4. NO TYCO LOGO AND DATE CODE ON THE PRODUCT.

5. RECOMMENDED TO MATE WITH TE 1909783-X

0.067g	7.44	6.0	9.0	06	1909782-5
0.053g	6.24	4.8	7.8	05	1909782-4
0.040g	5.04	3.6	6.6	04	1909782-3
0.027g	3.84	2.4	5.4	03	1909782-2
0.015g	2.64	1.2	4.2	02	1909782-1
WEIGHT	C	B	A	NO. OF CONTACTS	PART NUMBER

THIS DRAWING IS A CONTROLLED DOCUMENT.		DWN F. YANG 20MAY2009												
DIMENSIONS: mm		CHK S. CHIEN 20MAY2009												
TOLERANCES UNLESS OTHERWISE SPECIFIED:		APVD W. KODAMA 20MAY2009												
<table border="1"> <tbody> <tr> <td>0 PLC</td> <td>± -</td> </tr> <tr> <td>1 PLC</td> <td>± 0.3</td> </tr> <tr> <td>2 PLC</td> <td>± 0.25</td> </tr> <tr> <td>3 PLC</td> <td>± 0.15</td> </tr> <tr> <td>4 PLC</td> <td>± -</td> </tr> <tr> <td>ANGLES</td> <td>± 3°</td> </tr> </tbody> </table>		0 PLC				± -	1 PLC	± 0.3	2 PLC	± 0.25	3 PLC	± 0.15	4 PLC	± -
0 PLC	± -													
1 PLC	± 0.3													
2 PLC	± 0.25													
3 PLC	± 0.15													
4 PLC	± -													
ANGLES	± 3°													
MATERIAL SEE NOTE		FINISH SEE NOTE	PRODUCT SPEC 108-57767	1.2mm PITCH, BOARD TO WIRE CONNECTOR WAFER, TOP ENTRYX										
		APPLICATION SPEC	SIZE A3	CAGE CODE 00779	DRAWING NO C=1909782									
		WEIGHT SEE TABLE	RESTRICTED TO	SCALE -	SHEET 1 OF 3									
		CUSTOMER DRAWING	REV A5											

1470-19 (1/08)

4

3

2

1

THIS DRAWING IS UNPUBLISHED.

RELEASED FOR PUBLICATION

© COPYRIGHT 2011 BY TYCO ELECTRONICS CORPORATION. ALL RIGHTS RESERVED.

LOC

DIST

REVISIONS

DW

P

LTR

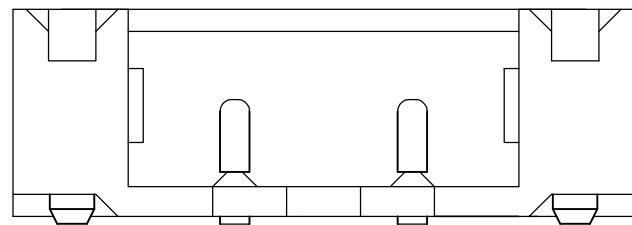
DESCRIPTION

DATE

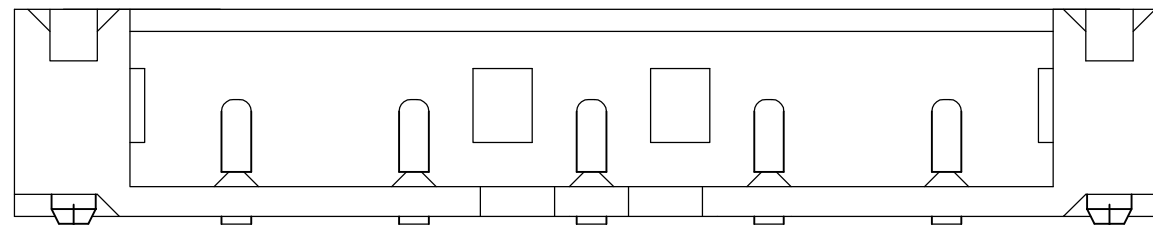
DWN

APVD

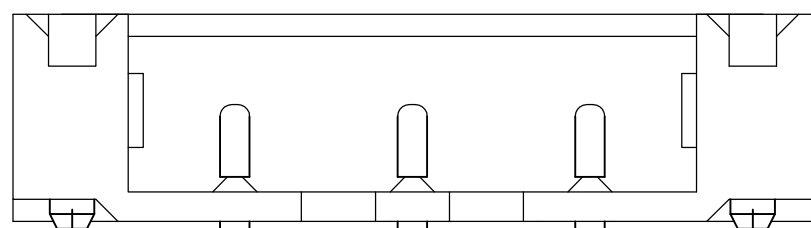
SEE SHEET 1.



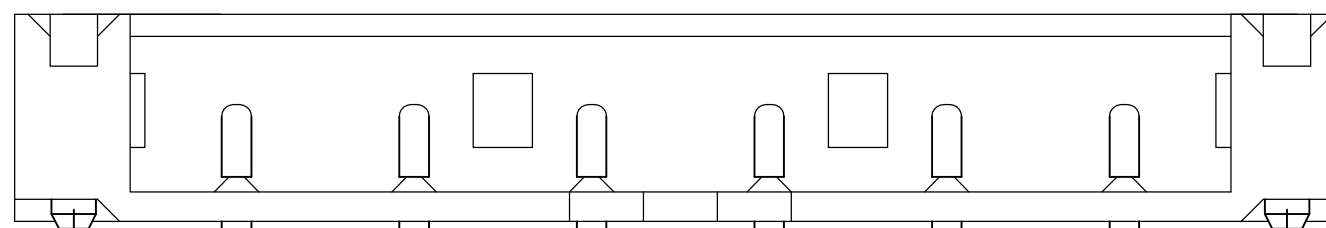
FOR 2 PIN



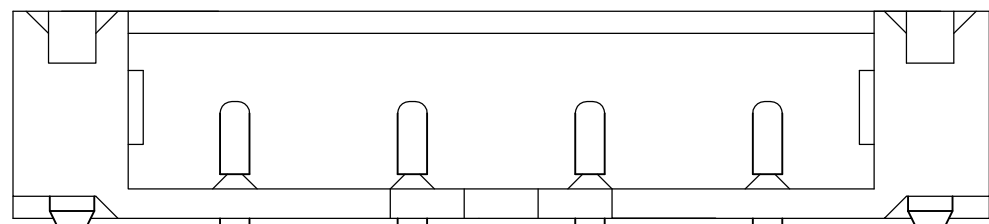
FOR 5 PIN



FOR 3 PIN



FOR 6 PIN

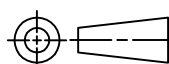


FOR 4 PIN

THIS DRAWING IS A CONTROLLED DOCUMENT.

DIMENSIONS:

mm



TOLERANCES UNLESS OTHERWISE SPECIFIED:

- 0 PLC ± -
- 1 PLC ± 0.3
- 2 PLC ± 0.2
- 3 PLC ± 0.15
- 4 PLC ± -
- ANGLES ± 3'

MATERIAL

FINISH

DWN

CHK

APVD

PRODUCT SPEC

APPLICATION SPEC

WEIGHT

CUSTOMER DRAWING



NAME

1.2mm PITCH, BOARD TO WIRE CONNECTOR WAFER, TOP ENTRYX

SIZE

CAGE CODE

DRAWING NO

RESTRICTED TO

A3

00779

C=1909782

SCALE

SHEET

2 of 3

REV A5

THIS DRAWING IS UNPUBLISHED.

RELEASED FOR PUBLICATION

© COPYRIGHT 2011 BY TYCO ELECTRONICS CORPORATION. ALL RIGHTS RESERVED.

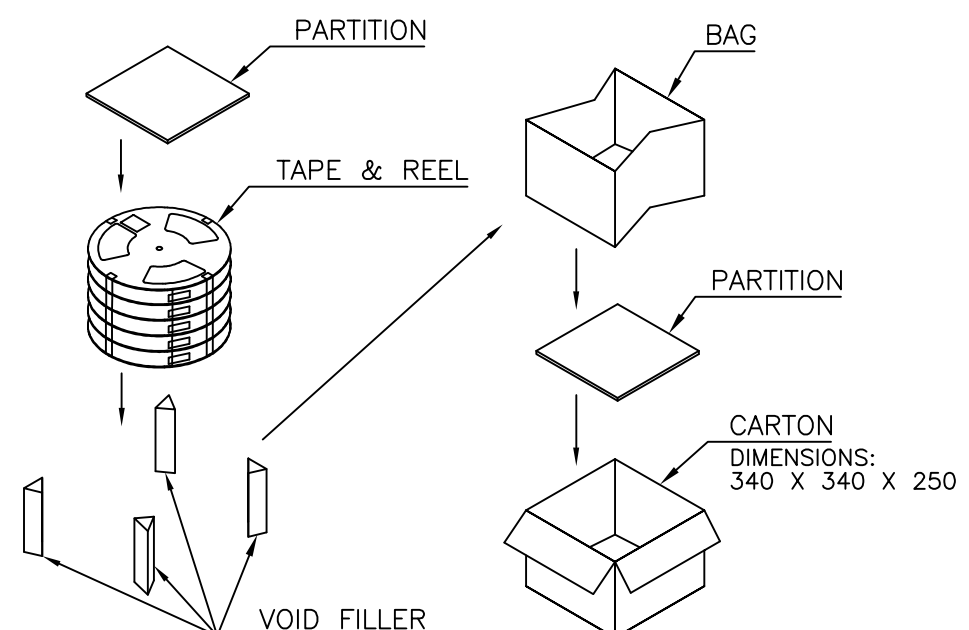
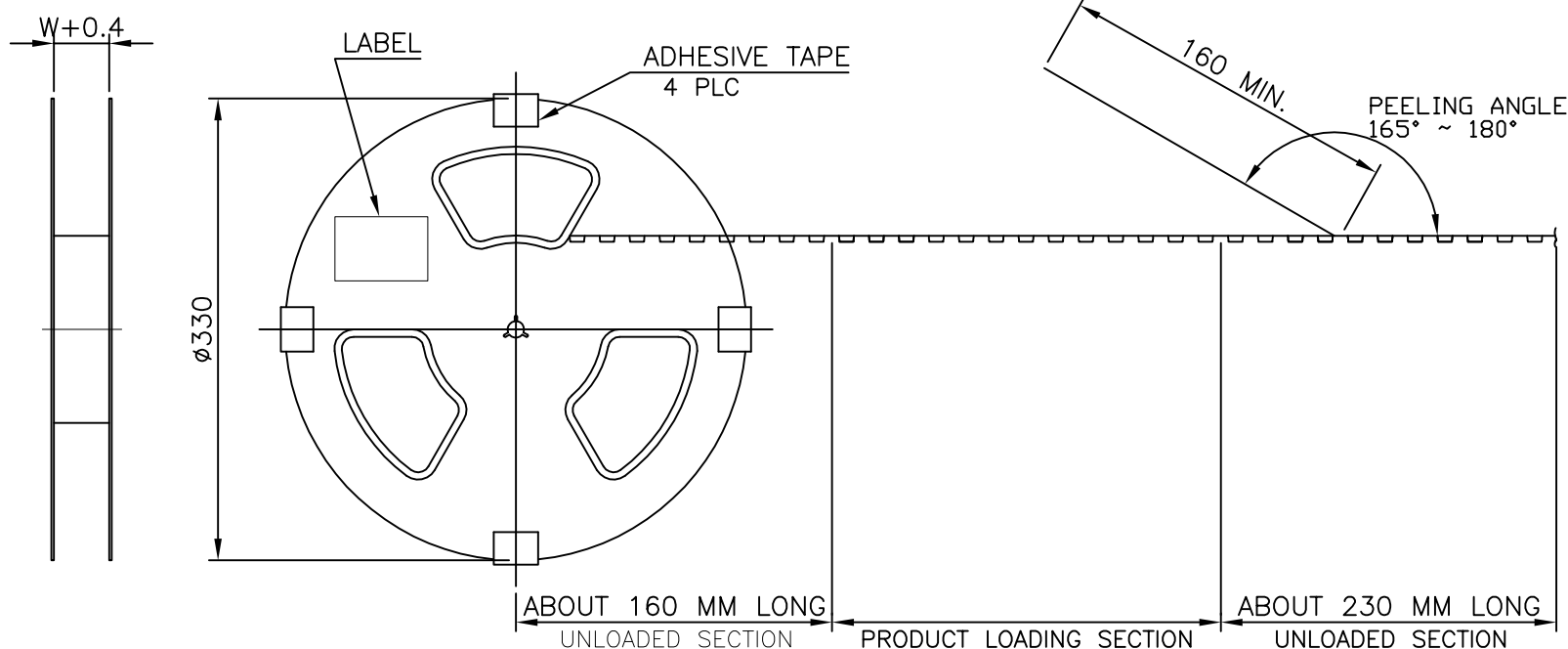
LOC DW DIST

REVISIONS

P	LTR	DESCRIPTION	DATE	DWN	APVD
		SEE SHEET 1.			

D

D



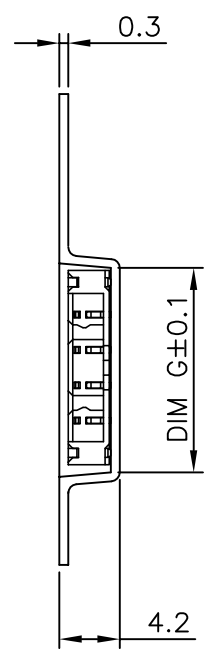
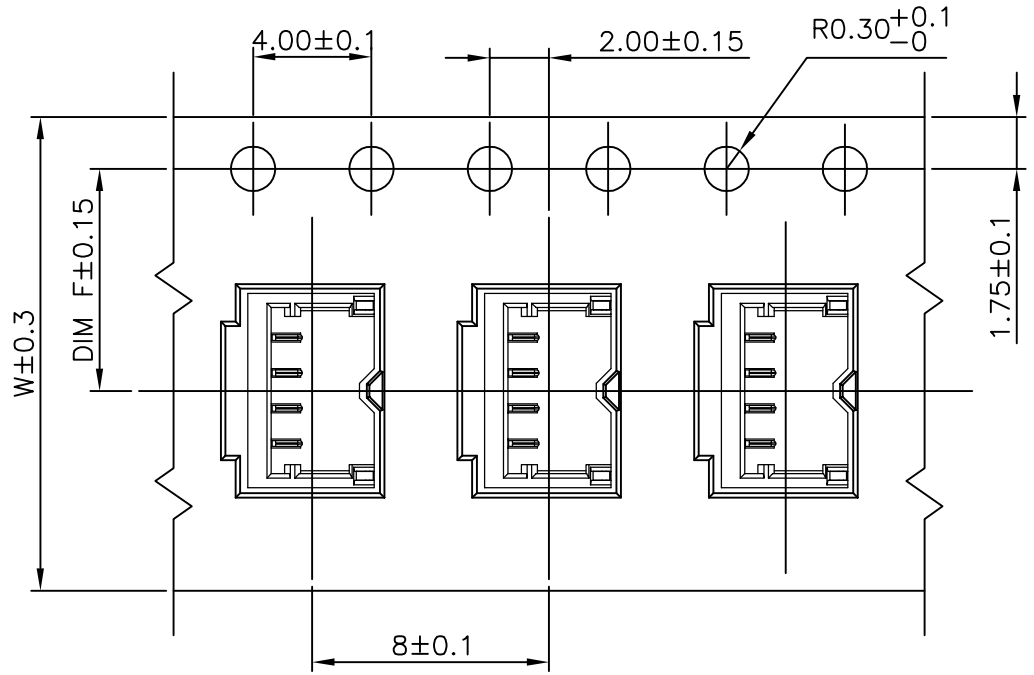
NOTES :

- MATERIAL :
 - COVER TAPE : P.S., COLOR: TRANSPARENT
 - CARRIER TAPE : P.S.
 - PARTITION : EPE
 - BOX: CORRUGATED FIBER
- DIMENSION :
 - REEL : SEE DRAWING
 - BOX : SEE DRAWING
- CARRIER TAPES, COVER TAPES, REELS AND TAPED COMPONENTS MUST MEET THE REQUIREMENTS DEFINED PER EIA-481-B.
- PEELING RESISTANCE : 10gf~130gf
- PEELING SPEED : 300mm/MINUTES

C

C

TOP OF TAPE



DIM G	DIM W	DIM F	PCS/TAPE	REELS/CARTON	QUANTITY (PCS)	G/W (Kg)	N/W (Kg)	NO. OF CONTACTS	PART NUMBER
9.35	24.0	11.50	4000	7	28000	6.71	2.11	06	1909782-5
8.15	16.0	7.50	4000	7	28000	5.94	1.67	05	1909782-4
6.95	16.0	7.50	4000	7	28000	5.53	1.26	04	1909782-3
5.75	16.0	7.50	4000	7	28000	5.12	0.85	03	1909782-2
4.55	12.0	5.50	4000	7	28000	4.66	0.47	02	1909782-1

B

B

A

A

THIS DRAWING IS A CONTROLLED DOCUMENT.

TE Connectivity

1.2mm PITCH, BOARD TO WIRE CONNECTOR WAFER, TOP ENTRYX

SIZE: A3 CAGE CODE: 00779 DRAWING NO: C=1909782

CUSTOMER DRAWING SCALE: SHEET 3 of 3 REV A5

DWN	CHK	APVD	PRODUCT SPEC	APPLICATION SPEC	WEIGHT

DIMENSIONS: mm

TOLERANCES UNLESS OTHERWISE SPECIFIED:

0 PLC	±
1 PLC	±0.3
2 PLC	±0.2
3 PLC	±0.15
4 PLC	±
ANGLES	± 3'

MATERIAL FINISH

X-ON Electronics

Largest Supplier of Electrical and Electronic Components

Click to view similar products for [Headers & Wire Housings](#) category:

Click to view products by [TE Connectivity](#) manufacturer:

Other Similar products are found below :

[892-18-020-10-001101](#) [58102-G61-06LF](#) [582553-1](#) [0009485154](#) [009176003701906](#) [0050291907](#) [LY20-4P-DT1-P1E-BR](#) [02.125.8002.8](#)
[609-3404](#) [61062-3](#) [61082-181009](#) [622-3653LF](#) [63453-116](#) [636-1030](#) [636-1427](#) [636-3427](#) [636-4007](#) [641938-9](#) [641991-4](#) [644827-2](#) [65817-](#)
[010LF](#) [65817-015LF](#) [65863-015LF](#) [66207-023LF](#) [67095-007LF](#) [67601157](#) [68645-018](#) [68648-049](#) [70.362.1628.0](#) [70-4210](#) [70-4226B](#) [70-](#)
[4853B](#) [707-5020](#) [707-5028](#) [71.350.2428.0](#) [71918-208LF](#) [71961-016LF](#) [733-134](#) [733-162](#) [754199-000](#) [760-3052](#) [787-8014-00](#) [79531-3000](#)
[FCN-360C032-B](#) [FCN-367T-T012/H](#) [FCN-723D010/2](#) [80.063.4001.1](#) [800-90-001-10-001000](#) [800-90-010-10-002000](#) [801-43-002-10-013000](#)