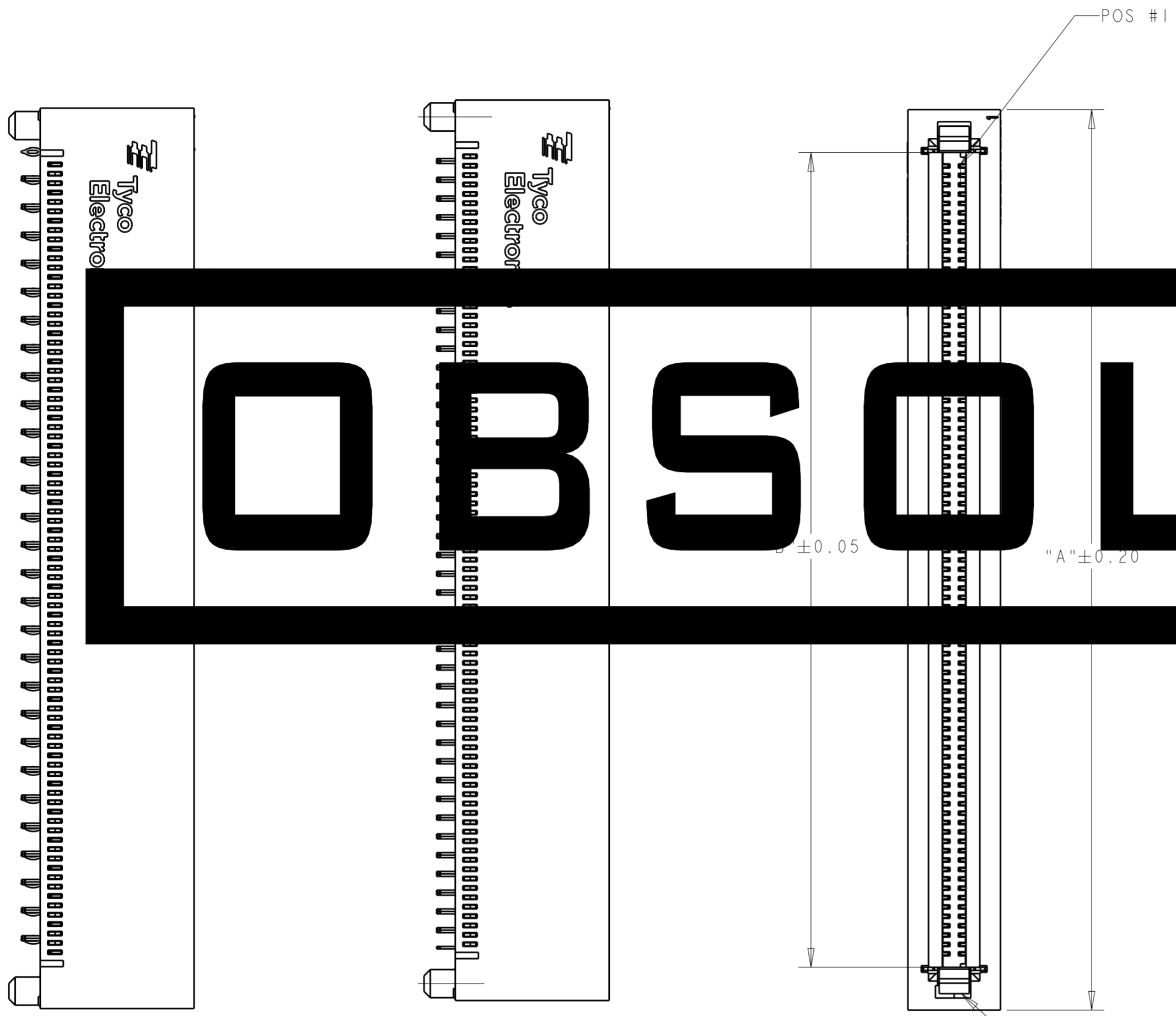


THIS DRAWING IS UNPUBLISHED. RELEASED FOR PUBLICATION 20
 © COPYRIGHT 20 BY TYCO ELECTRONICS CORPORATION. ALL RIGHTS RESERVED.

LOC	DIST	REVISIONS					
CC	00	P	LTR	DESCRIPTION	DATE	DWN	APVD
		A		RELEASED	25NOV08	KT	PR
		B		REV PER ECO-09-006618	24MAR2009	CR	PR
		C		REV PER ECR-15-004753	13JUL2015	F.L	F.Y



1 PCB HOLE DIMENSIONS:
 DRILLED HOLE = 0.64±0.02 mm
 FINISHED HOLE = 0.55 mm REF
 Cu THICKNESS = 25-50 um WITH EITHER
 PLATING THICKNESS:
 HASL Sn Pb = 4-10 um OR
 IMMERSION Sn = MIN 0.5 um OR
 OSP = 0.2-0.5 um OR
 IMMERSION Au/Ni = 0.5-1.2 um Au OVER 3.0-7.0 um Ni OR
 IMMERSION Ag = 0.1 um MIN

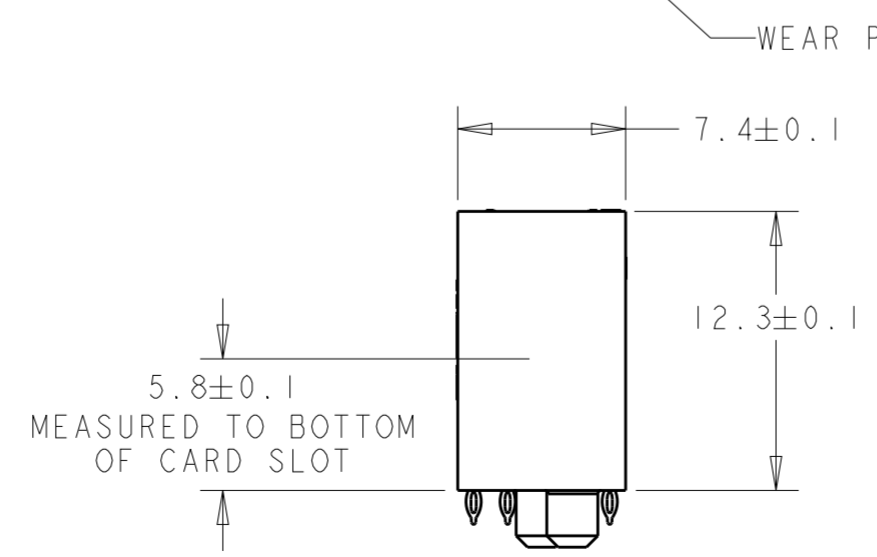
CONTACTS- COPPER ALLOY
 WEAR PLATE- STAINLESS STEEL
 3 FINISH- MATING AREA- 0.76 um MIN GOLD OR
 0.64 um MIN PALLADIUM-NICKEL OVER 1.27 um MIN NICKEL
 COMPLIANT PIN AREA- 0.5 um MATTE TIN OVER 1.27 um
 NICKEL

4 CONNECTOR MARKED WITH PART NUMBER AND DATE CODE.
 5 DATUM AND BASIC DIMENSIONS ESTABLISHED BY CUSTOMER.

6 CONTACT AREA LUBRICATED WITH BELLCOS APPROVED LUBRICANT. TECHNICAL REFERENCE GROUP 17-CORE ISSUE 1, NOVEMBER 1995.
 7 REFER TO TYCO ELECTRONICS APPLICATION SPECIFICATION 114-13180 FOR SPECIFIC APPLICATION RELATED INFORMATION.

8 FINISH- MATING AREA- 0.76 um MIN GOLD OR
 0.64 um MIN PALLADIUM-NICKEL OVER 1.27 um MIN NICKEL
 COMPLIANT PIN AREA- 0.5 um BRIGHT TIN-LEAD OVER 1.27 um NICKEL.
 9 WEAR PLATE EXTENDS FROM TOP OF CONNECTOR TO BOTTOM OF SLOT AND IS USED TO ELIMINATE WEAR OF THE HOUSING CAUSED BY THE EDGE OF THE PCB CARD.

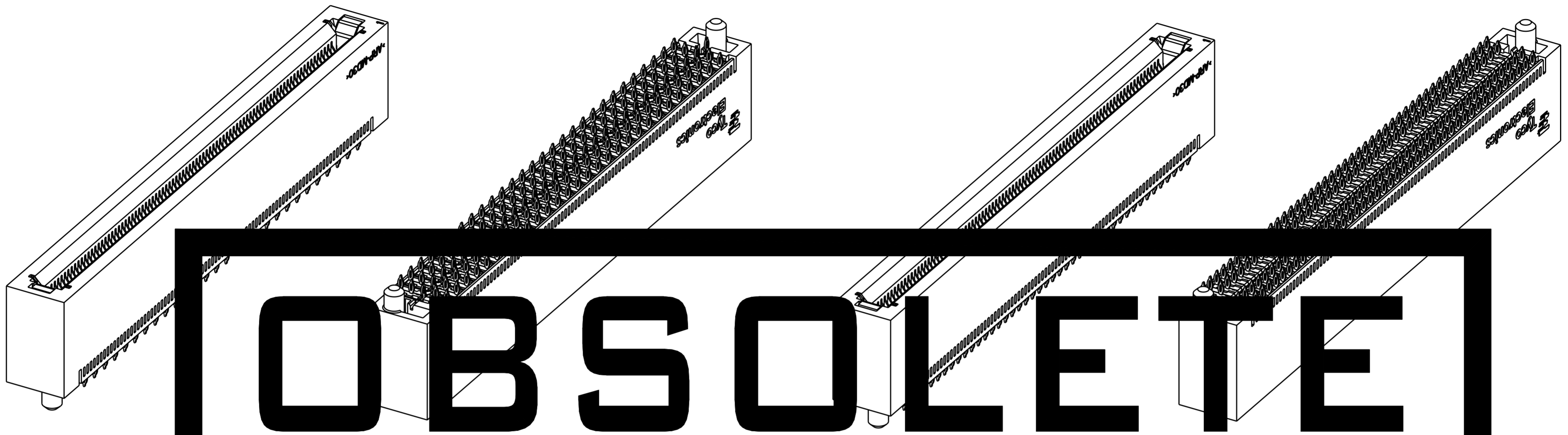
10 THESE 2 END HOLES ARE NOT REQUIRED ON 80 AND 140 POSITION PCB'S.



THIS DRAWING IS A CONTROLLED DOCUMENT FOR TYCO ELECTRONICS CORPORATION. IT IS SUBJECT TO CHANGE AND THE CONTROLLING ENGINEERING ORGANIZATION SHOULD BE CONTACTED FOR THE LATEST REVISION.		DWN D. SZCZESNY	11 JAN 08	Tyco Electronics Harrisburg, PA 17105-3608	
DIMENSIONS: mm		CHK -	APVD -	NAME CARD EDGE CONNECTOR, VERTICAL 0.75 CENTERLINE	
TOLERANCES UNLESS OTHERWISE SPECIFIED: 0 PLC ±0.1 1 PLC ±0.1 2 PLC ±0.13 3 PLC ±0.013 4 PLC ±0.0001 ANGLES ±		PRODUCT SPEC 108-2254 APPLICATION SPEC 114-13180		SIZE A200779	DRAWING NO C-1934768
MATERIAL -		WEIGHT -		RESTRICTED TO -	SCALE 3:1
CUSTOMER DRAWING				SHEET 1	REV C

THIS DRAWING IS UNPUBLISHED. RELEASED FOR PUBLICATION 20
 © COPYRIGHT 20 BY TYCO ELECTRONICS CORPORATION. ALL RIGHTS RESERVED.

LOC	DIST	REVISIONS					
CC	00	P	LTR	DESCRIPTION	DATE	DWN	APVD
		-		SEE SHEET 1			



OBSOLETE

2 - DIFFERENTIAL PAIR CONFIGURATION

INDIVIDUAL SIGNAL CONFIGURATION

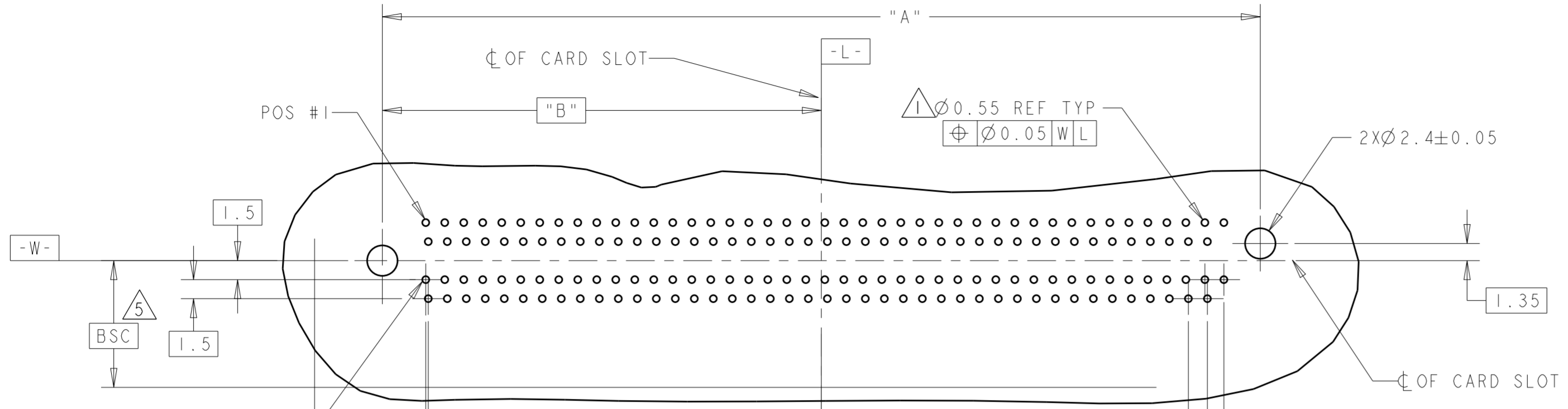
65.15	72.00	56	-	8	170	3-1934768-6
53.90	60.75	46	-	8	140	3-1934768-5
42.65	48.50	36	-	8	110	3-1934768-4
31.40	38.25	26	-	8	80	3-1934768-3
20.15	27.00	16	-	8	50	3-1934768-2
47.15	54.00	40	-	8	122	3-1934768-1
65.15	72.00	56	-	3	170	2-1934768-6
53.90	60.75	46	-	3	140	2-1934768-5
42.65	49.50	36	-	3	110	2-1934768-4
31.40	38.25	26	-	3	80	2-1934768-3
20.15	27.00	16	-	3	50	2-1934768-2
47.15	54.00	40	-	3	122	2-1934768-1
65.15	72.00	-	170	8	170	1-1934768-6
53.90	60.75	-	140	8	140	1-1934768-5
42.65	49.50	-	110	8	110	1-1934768-4
31.40	38.25	-	80	8	80	1-1934768-3
20.15	27.00	-	50	8	50	1-1934768-2
47.15	54.00	-	122	8	122	1-1934768-1
65.15	72.00	-	170	3	170	1934768-6
53.90	60.75	-	140	3	140	1934768-5
42.65	49.50	-	110	3	110	1934768-4
31.40	38.25	-	80	3	80	1934768-3
20.15	27.00	-	50	3	50	1934768-2
47.15	54.00	-	122	3	122	1934768-1
"B"	"A"	DIFFERENTIAL PAIR	SIGNALS	PLATING	POSITIONS	PART NUMBER

CUSTOM LOAD PATTERNS
ARE AVAILABLE. CONTACT
TYCO ELECTRONICS SALES.

THIS DRAWING IS A CONTROLLED DOCUMENT FOR TYCO ELECTRONICS CORPORATION. IT IS SUBJECT TO CHANGE AND THE CONTROLLING ENGINEERING ORGANIZATION SHOULD BE CONTACTED FOR THE LATEST REVISION.		DWN: D. SZCZESNY 11 JAN 08	Tyco Electronics Harrisburg, PA 17105-3608	
DIMENSIONS: mm	TOLERANCES UNLESS OTHERWISE SPECIFIED: 0 PLC ±0.1 1 PLC ±0.1 2 PLC ±0.13 3 PLC ±0.013 4 PLC ±0.0001 ANGLES ±	CHK: - APVD: -	NAME: CARD EDGE CONNECTOR, VERTICAL 0.75 CENTERLINE	
		PRODUCT SPEC: 108-2254 APPLICATION SPEC: 114-13180	SIZE: A2 CAGE CODE: 00779 DRAWING NO: C-1934768	RESTRICTED TO: -
MATERIAL: -	FINISH: -	WEIGHT: -	SCALE: 3:1 SHEET 2 OF 4 REV C	
CUSTOMER DRAWING			SCALE: 3:1 SHEET 2 OF 4 REV C	

THIS DRAWING IS UNPUBLISHED. RELEASED FOR PUBLICATION 20
 © COPYRIGHT 20 BY TYCO ELECTRONICS CORPORATION. ALL RIGHTS RESERVED.

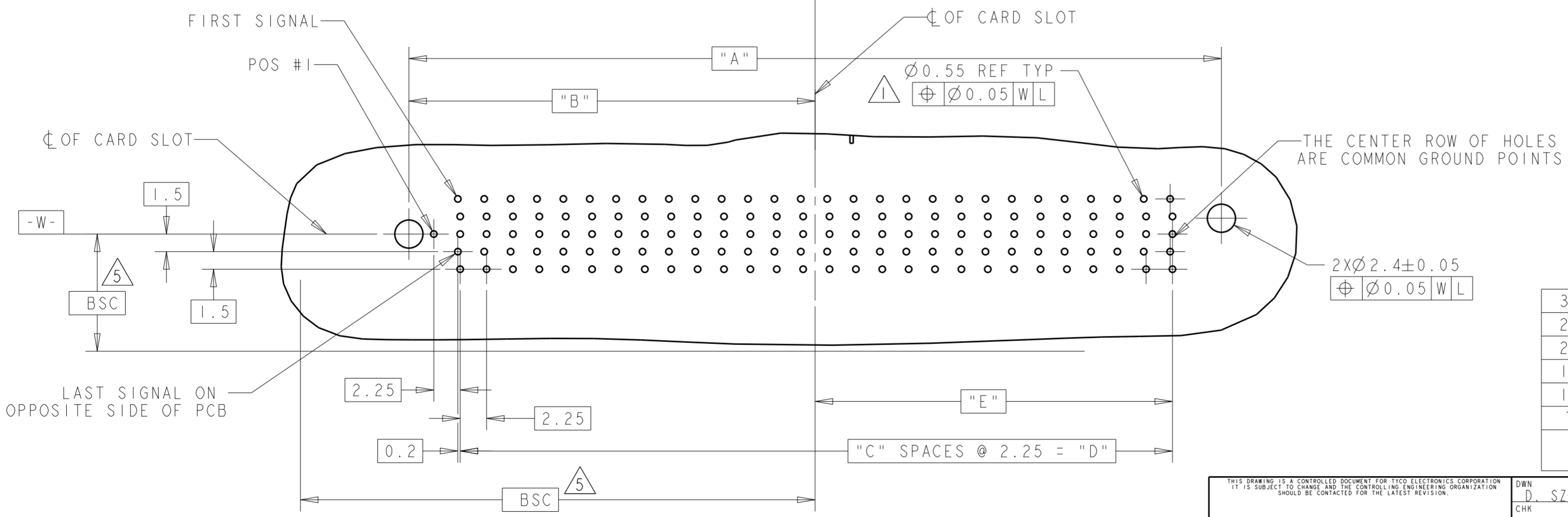
LOC	DIST	REVISIONS			
P	LTR	DESCRIPTION	DATE	DWN	APVD
CC	00	SEE SHEET 1	-	-	-



OBSOLETE

DIMENSIONS FOR INDIVIDUAL SIGNAL PCB LAYOUT

"E"	"D"	"C"	"B"	"A"	CONNECTOR SIZE
34.38	60.75	27	34.38	69.30	170
29.01	50.50	24	29.01	58.05	140
21.48	42.75	19	21.48	51.30	122
19.23	38.25	17	19.23	46.80	110
14.36	27.00	12	14.36	35.55	80
7.98	15.75	7	7.98	24.30	50



DIMENSIONS FOR DIFFERENTIAL PAIR PCB LAYOUT

"E"	"D"	"C"	"B"	"A"	CONNECTOR SIZE
30.48	60.75	27	34.65	69.30	170
24.86	49.50	22	29.03	58.05	140
21.48	42.75	19	25.65	51.30	122
19.23	38.25	17	23.40	46.80	110
13.61	27.00	12	17.78	35.55	80
7.98	15.75	7	12.15	24.30	50

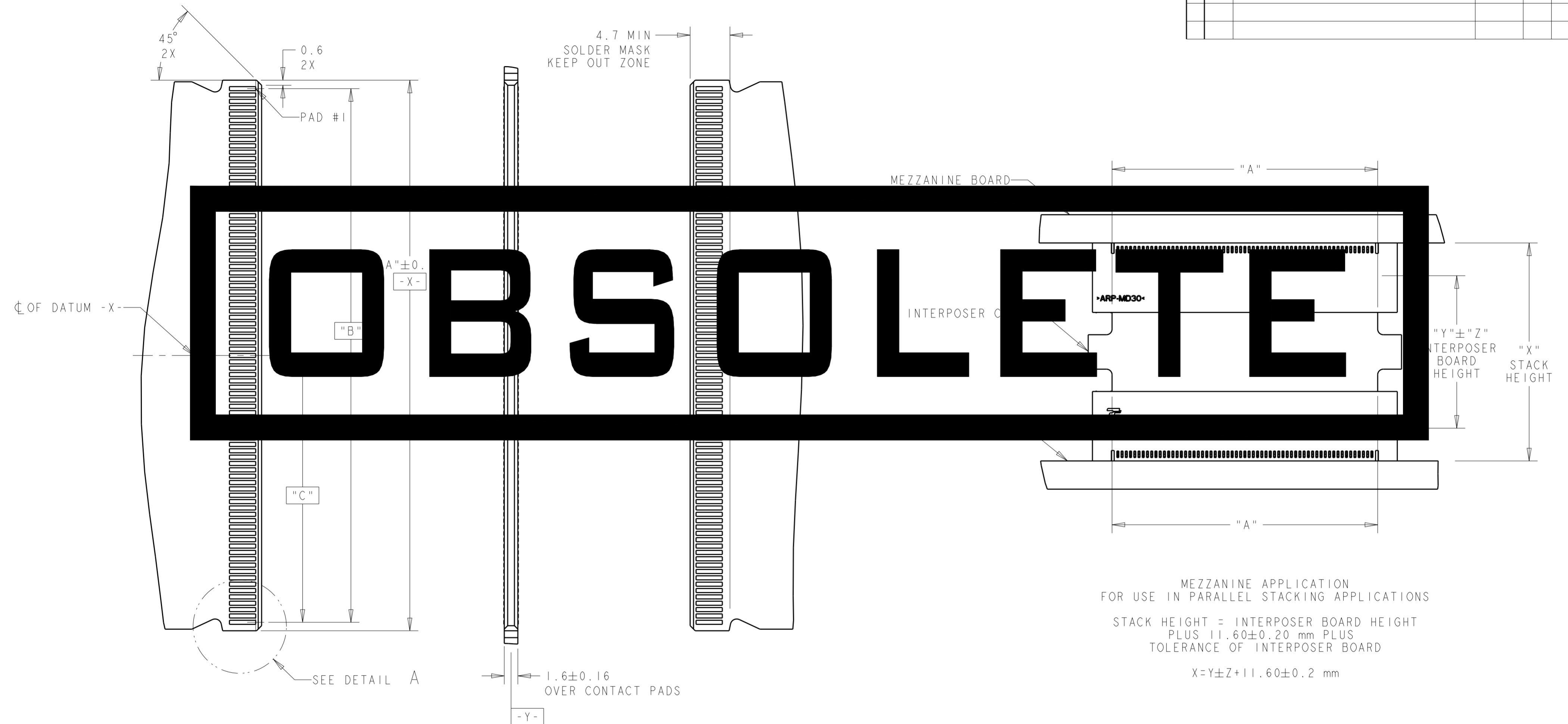
RECOMMENDED PCB LAYOUT
DIFFERENTIAL PAIR CONFIGURATION

THIS DRAWING IS A CONTROLLED DOCUMENT FOR TYCO ELECTRONICS CORPORATION. IT IS SUBJECT TO CHANGE AND THE CONTROLLING ENGINEERING ORGANIZATION SHOULD BE CONTACTED FOR THE LATEST REVISION.

DIMENSIONS: mm 	TOLERANCES UNLESS OTHERWISE SPECIFIED: 0 PLC ±0.1 1 PLC ±0.1 2 PLC ±0.13 3 PLC ±0.013 4 PLC ±0.0001 ANGLES ±	DWN D. SZCZESNY 11 JAN 08 CHK - APVD - PRODUCT SPEC 108-2254 APPLICATION SPEC 114-13180 WEIGHT - CUSTOMER DRAWING	 Tyco Electronics Harrisburg, PA 17105-3608 NAME CARD EDGE CONNECTOR, VERTICAL 0.75 CENTERLINE SIZE A2 CAGE CODE 00779 DRAWING NO C-1934768 RESTRICTED TO - SCALE 3:1 SHEET 3 OF 4 REV C
-----------------------	--	---	---

THIS DRAWING IS UNPUBLISHED. RELEASED FOR PUBLICATION 20
 © COPYRIGHT 20 BY TYCO ELECTRONICS CORPORATION. ALL RIGHTS RESERVED.

LOC	DIST	REVISIONS			
P	LTR	DESCRIPTION	DATE	DWN	APVD
CC	00	SEE SHEET 1	-	-	-

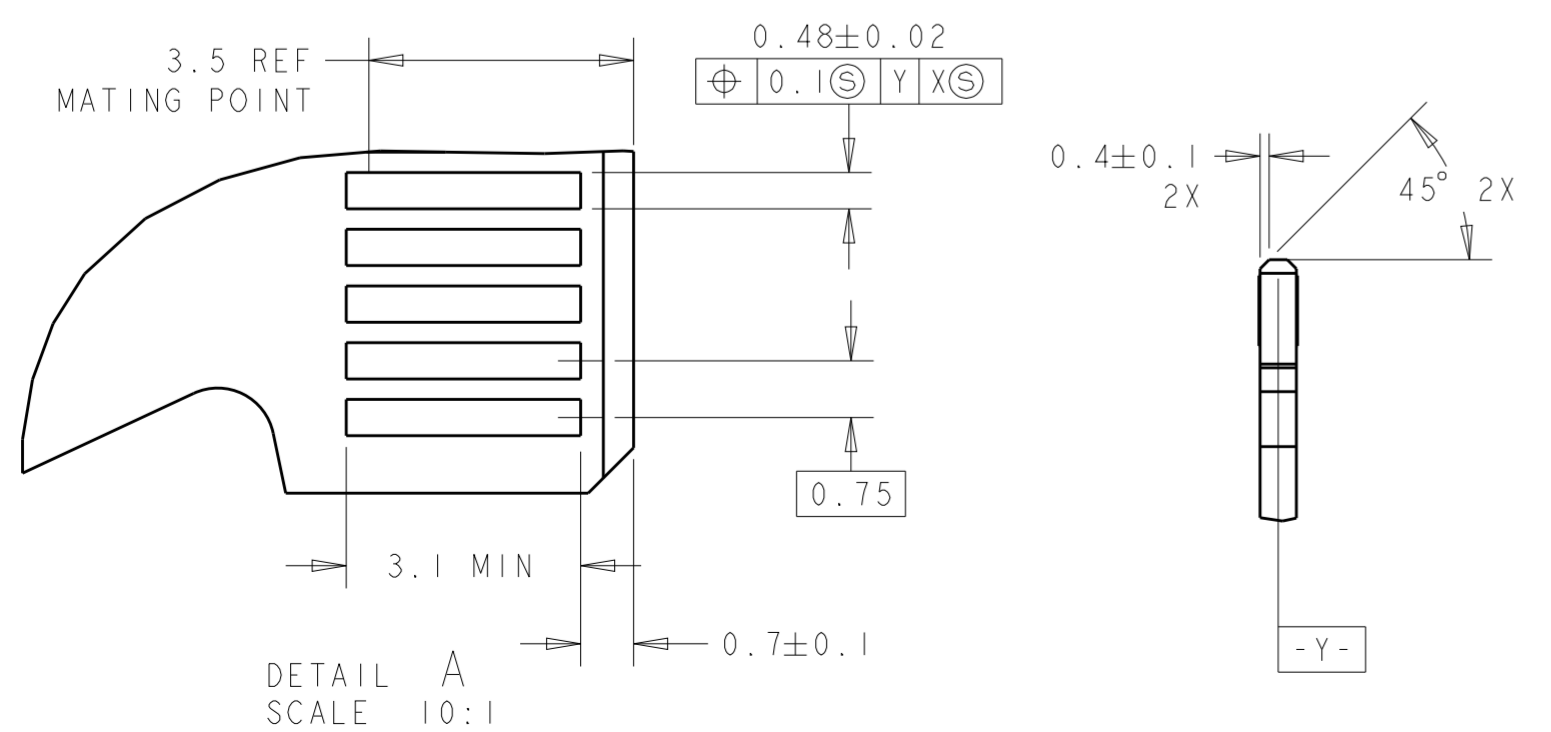


MEZZANINE APPLICATION
 FOR USE IN PARALLEL STACKING APPLICATIONS

STACK HEIGHT = INTERPOSER BOARD HEIGHT
 PLUS 11.60 ± 0.20 mm PLUS
 TOLERANCE OF INTERPOSER BOARD

$X = Y \pm Z + 11.60 \pm 0.2 \text{ mm}$

RECOMMENDED MATING
 PCB LAYOUT



DETAIL A
 SCALE 10:1

31.50	63.00	65.00	85	170
25.88	51.75	53.75	70	140
22.50	45.00	47.00	61	122
20.25	40.50	42.50	55	110
14.63	29.25	31.25	40	80
9.00	18.00	20.00	25	50
"C"	"B"	"A"	PADS PER SIDE	CONNECTOR SIZE

THIS DRAWING IS A CONTROLLED DOCUMENT FOR TYCO ELECTRONICS CORPORATION. IT IS SUBJECT TO CHANGE AND THE CONTROLLING ENGINEERING ORGANIZATION SHOULD BE CONTACTED FOR THE LATEST REVISION.		DWN D. SZCZESNY	11 JAN 08	Tyco Electronics Harrisburg, PA 17105-3608	
DIMENSIONS: mm		CHK -	APVD -	NAME CARD EDGE CONNECTOR, VERTICAL 0.75 CENTERLINE	
TOLERANCES UNLESS OTHERWISE SPECIFIED: 0 PLC ±0.1 1 PLC ±0.13 2 PLC ±0.13 3 PLC ±0.013 4 PLC ±0.0001 ANGLES ±		PRODUCT SPEC 108-2254		SIZE A200779	
MATERIAL -		APPLICATION SPEC 114-13180		DRAWING NO C-1934768	
FINISH -		WEIGHT -		RESTRICTED TO -	
CUSTOMER DRAWING			SCALE 3:1	SHEET 4 OF 4	REV C

X-ON Electronics

Largest Supplier of Electrical and Electronic Components

Click to view similar products for [Standard Card Edge Connectors](#) category:

Click to view products by [TE Connectivity](#) manufacturer:

Other Similar products are found below :

[6565204-6](#) [PKC-156](#) [1437274-4](#) [147889-1](#) [1489165-4](#) [1-582587-1](#) [1-582589-1](#) [2-6437275-9](#) [284-0102-12100](#) [306022901000000](#) [307-012-502-202](#) [307-024-526-201](#) [307-056-520-300](#) [307-080-526-208](#) [245-062-520-350](#) [287-0032-12101](#) [306-028-525-102](#) [306-240-318](#) [307-036-502-202](#) [307-036-521-301](#) [307-072-526-202](#) [345-060-559-303](#) [368-004-520-201](#) [392-008-559-201](#) [534671-1](#) [5-530501-5](#) [341-240-317](#) [345-029-520-300](#) [345-030-500-301](#) [345-044-500-300](#) [345-220-058](#) [346-240-318](#) [357-030-526-201](#) [387-012-523-300](#) [395-044-520-300](#) [395-100-524-300](#) [50-12B-10](#) [50-6SN-5](#) [09-07-2032](#) [10035388-106LF](#) [10035388-802LF](#) [10122859-009LF](#) [530555-1](#) [EBT156-15A2X](#) [2007209-1](#) [5-678046-1](#) [1766200-1](#) [650231-6](#) [650289-1](#) [73726-0005](#)