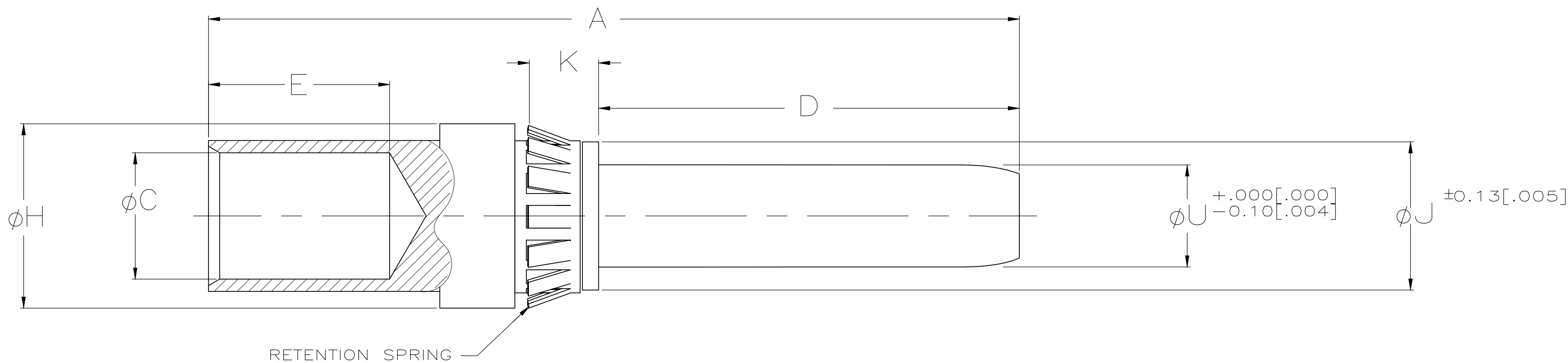


THIS DRAWING IS UNPUBLISHED. RELEASED FOR PUBLICATION
 © COPYRIGHT - TE Connectivity Ltd. ALL RIGHTS RESERVED.

REVISIONS					
P	LTR	DESCRIPTION	DATE	DWN	APVD
E1		REVISED PER ECR-19-010604	7/25/19	OL	SZ



④ ① ②	4	5.08	6.65	7.62	9.1	19.1	4.60	38.9	8	4 mm	193837-8
	[.157]	[.20]	[.262]	[.300]	[.36]	[.75]	[.181]	[1.53]			
④	8	5.08	13.51	14.48	17.5	33	12.37	66.8	1/0	8 mm	193837-7
	[.315]	[.20]	[.532]	[.570]	[.69]	[1.30]	[.487]	[2.63]			
④	8	5.08	13.51	14.48	14.2	33	9.91	63.5	2	8 mm	193837-6
	[.315]	[.20]	[.532]	[.570]	[.56]	[1.30]	[.390]	[2.50]			
④	6	5.08	9.45	10.41	11.7	19.3	7.36	43.9	4	6 mm	193837-5
	[.236]	[.20]	[.372]	[.410]	[.46]	[.76]	[.290]	[1.73]			
④	6	5.08	9.45	10.41	9.4	19.3	5.97	41.7	6	6 mm	193837-4
	[.236]	[.20]	[.372]	[.410]	[.37]	[.76]	[.235]	[1.64]			
④	4	5.08	6.65	7.62	9.1	19.1	4.60	38.9	8	4 mm	193837-3
	[.157]	[.20]	[.262]	[.300]	[.36]	[.75]	[.181]	[1.53]			
④	4	5.08	6.65	7.62	9.1	19.1	3.68	38.9	10	4 mm	193837-2
	[.157]	[.20]	[.262]	[.300]	[.36]	[.75]	[.145]	[1.53]			
④	2	5.08	4.75	5.72	9.1	16.3	2.54	35.6	12/14	2 mm	193837-1
	[.079]	[.20]	[.187]	[.225]	[.36]	[.64]	[.105]	[1.40]			
	ϕU	K	ϕJ	ϕH	E	D	ϕC	A	WIRE AWG	PIN SIZE	PART NO.

NOTES:

- ① LUBRICATED AT ASSY
- ② PRELIMINARY PART NO.
- ③ PIN FINISH: .200 μ IN MIN. THICK SILVER OVER .500 μ IN MIN THICK NICKEL
- ④ OBSOLETE PART NO.

THIS DRAWING IS A CONTROLLED DOCUMENT.		DWN DAB 09-10-93		
DIMENSIONS: INCHES		CHK JMT 09-10-93		
TOLERANCES UNLESS OTHERWISE SPECIFIED:		APVD -	NAME ASSY,PIN,2-8mm,CRIMP	
0 PLC \pm - 1 PLC \pm - 2 PLC \pm 0.40 [.015] 3 PLC \pm 0.25 [.010] 4 PLC \pm - ANGLES \pm - FINISH		PRODUCT SPEC -	DRAWING NO A2 00779 C=193837	
MATERIAL PIN: COPPER ALLOY RETENTION SPRING: STAINLESS STEEL		APPLICATION SPEC -	WEIGHT 0.000000	RESTRICTED TO -
		FINISH - ③	CUSTOMER DRAWING	SCALE 4:1 SHEET 1 OF 1 REV E1

CUSTOMER DRAWING

X-ON Electronics

Largest Supplier of Electrical and Electronic Components

Click to view similar products for [Heavy Duty Power Connectors](#) category:

Click to view products by [TE Connectivity](#) manufacturer:

Other Similar products are found below :

[647757-1](#) [6643411-1](#) [6646058-2](#) [6646137-1](#) [6646138-1](#) [6646479-1](#) [6646608-1](#) [6646786-1](#) [6646940-1](#) [6651091-1](#) [6651525-1](#) [6651529-1](#)
[6651788-1](#) [696475-1](#) [702-32-01109](#) [703-25-02205](#) [73000005059](#) [73000005642](#) [73080255059](#) [73080965046](#) [765-15-0080A](#) [765-16-0080B](#)
[765-18-0080D](#) [829992-1](#) [902-77-02113](#) [PS00/A0620/6300](#) [PS25/A0420/63](#) [129-1J](#) [1409400](#) [AN0024023](#) [E6374G1](#) [e6389g2](#) [157-43GW8](#)
[MS3117-14AC](#) [1643543-1](#) [1650540-1](#) [1651811-2](#) [1766260-1](#) [1766282-1](#) [1766966-1](#) [1791340000](#) [NLDFT-3-BL-L-S120-M40A](#) [NLDFT-N-](#)
[W-L-C240-M40B](#) [NLS-2-R-C240-M40B](#) [NLS-N-W-C240-M40B](#) [NPS-3-BL-T6](#) [1986615-1](#) [2-1589900-8](#) [2199314-1](#) [KA8102](#)